

PANEL HPHL (UTILITY ROOM) 120/208 3PH 4W 125 AMP BUS - MCB 42K AIC NEMA TYPE 1 (SURFACE)					
CKT #	LOAD DESCRIPTION	AT	P	CA	DF DA
1	ROOF RECEPTS	20	1	6	0.50 3
3	UTILITY ROOM RECEPTS	20	1		0.50 0
5	TBB RECEPT 1	20	1		0
7	TBB RECEPT 2	20	1		0
9					
11	WH (STAIR A)	20	2	10	0.70 7
13				10	0.70 7
15	WH (STAIR B)	20	2	10	0.70 7
17				16	0.70 11
19	SCU-2	20	2	16	0.70 11
21	SPARE	20	1		0
23	SPARE	20	1		0
25	SPARE	20	1		0
27	SPARE	20	1		0
29	SPARE	20	1		0
31	SPARE	20	1		0
33	SPARE	20	1		0
35	SPARE	20	1		0
37	SPARE	20	1		0
39	SPARE	20	1		0
41	SPARE	20	1		0

ALL LOADS TO 480V PANEL VIA DTT

AT - Amp Trip  
P - Poles  
A - Amps  
CA - Connected Amperes  
DF - Demand Factor (1 - .1)  
DA - Demand Amperes  
MLO - Main Lug Only  
MCB - Main Circuit Breaker

PANEL TP3HA (TENANT ELECT CLOSET FLR 3) 480/277 3PH 4W 225 AMP BUS - MLO 42K AIC NEMA TYPE 1 (RECESSED)					
CKT #	LOAD DESCRIPTION	AT	P	CA	DF DA
1				2	0.70 1
3	45 KVA DTT	60	3	2	0.70 1
5				2	0.70 1
7				20	0.70 14
9	AC UNIT INTERIOR ZONE (ROOF TOP)	25	3	20	0.70 14
11				20	0.70 14
13	SPARE	20	1		0
15	SPARE	20	1		0
17	SPARE	20	1		0
19	SPARE	20	1		0
21	SPARE	20	1		0
23	SPARE	20	1		0
25	SPARE	20	1		0
27	SPARE	20	1		0
29	SPARE	20	1		0
31	SPARE	20	1		0
33	SPARE	20	1		0
35	SPARE	20	1		0
37	SPARE	20	1		0
39	SPARE	20	1		0
41	SPARE	20	1		0

PANEL TP3AL (TENANT ELECT CLOSET FLR 3) 120/208 3PH 4W 125 AMP BUS - MCB 42K AIC NEMA TYPE 1 (RECESSED)					
CKT #	LOAD DESCRIPTION	AT	P	CA	DF DA
1	BATHROOM EXHAUST FANS	20	1	1	0.70 1
3				26	1.00 26
5	EW-H-1	40	2		1.00 0
7	ETP: JANITOR CLOSET	20	1	2	1.00 2
9	COUNTER RECEPT: DINING RM	20	1	3	0.50 2
11	DISHWASHER	20	1	10	0.50 5
13	RECEPTS & EF-T: GUEST RM 1	20	1	13	0.50 6
15	VAV 1-1: SERVES GUEST RM 1	20	1	12	1.00 12
17	RECEPTS & EF-T: GUEST RM 3	20	1	13	0.50 6
19	VAV 1-3: SERVES GUEST RM 3	20	1	12	1.00 12
21	EF-T: JAN & ELEC	20	1	1	1.00 1
23	RECEPTS: HUDDLE RM 156 & SOLO	20	1	8	0.50 4
25	POWER/DATA WHIP: OPEN OFFICE 302	20	1	15	0.50 8
27	POWER/DATA WHIP: OPEN OFFICE 302	20	1	15	0.50 8
29	POWER/DATA WHIP: OPEN OFFICE 302	20	1	15	0.50 8
31	POWER/DATA WHIP: OPEN OFFICE 302	20	1	15	0.50 8
33	FLOOR RECEPTS AT WORKSTATIONS	20	1	5	0.50 2
35	RECEPTS: PERIMETER SEATING & FLOOR	20	1	5	0.50 2
37		20	1		0
39		20	1		0
41		20	1		0

ALL LOADS TO 480V PANEL VIA DTT

PANEL TP4H (TENANT ELECT CLOSET FLR 4) 480/277 3PH 4W 225 AMP BUS - MLO 42K AIC NEMA TYPE 1 (RECESSED)					
CKT #	LOAD DESCRIPTION	AT	P	CA	DF DA
1				2	0.70 1
3	45 KVA DTT	60	3	2	0.70 1
5				2	0.70 1
7				20	0.70 14
9	AC UNIT INTERIOR ZONE (ROOF TOP)	25	3	20	0.70 14
11				20	0.70 14
13	SPARE	20	1		0
15	SPARE	20	1		0
17	SPARE	20	1		0
19	SPARE	20	1		0
21	SPARE	20	1		0
23	SPARE	20	1		0
25	SPARE	20	1		0
27	SPARE	20	1		0
29	SPARE	20	1		0
31	SPARE	20	1		0
33	SPARE	20	1		0
35	SPARE	20	1		0
37	SPARE	20	1		0
39	SPARE	20	1		0
41	SPARE	20	1		0

PANELS PROVIDED BY BUILDING SHELL CONTRACTOR

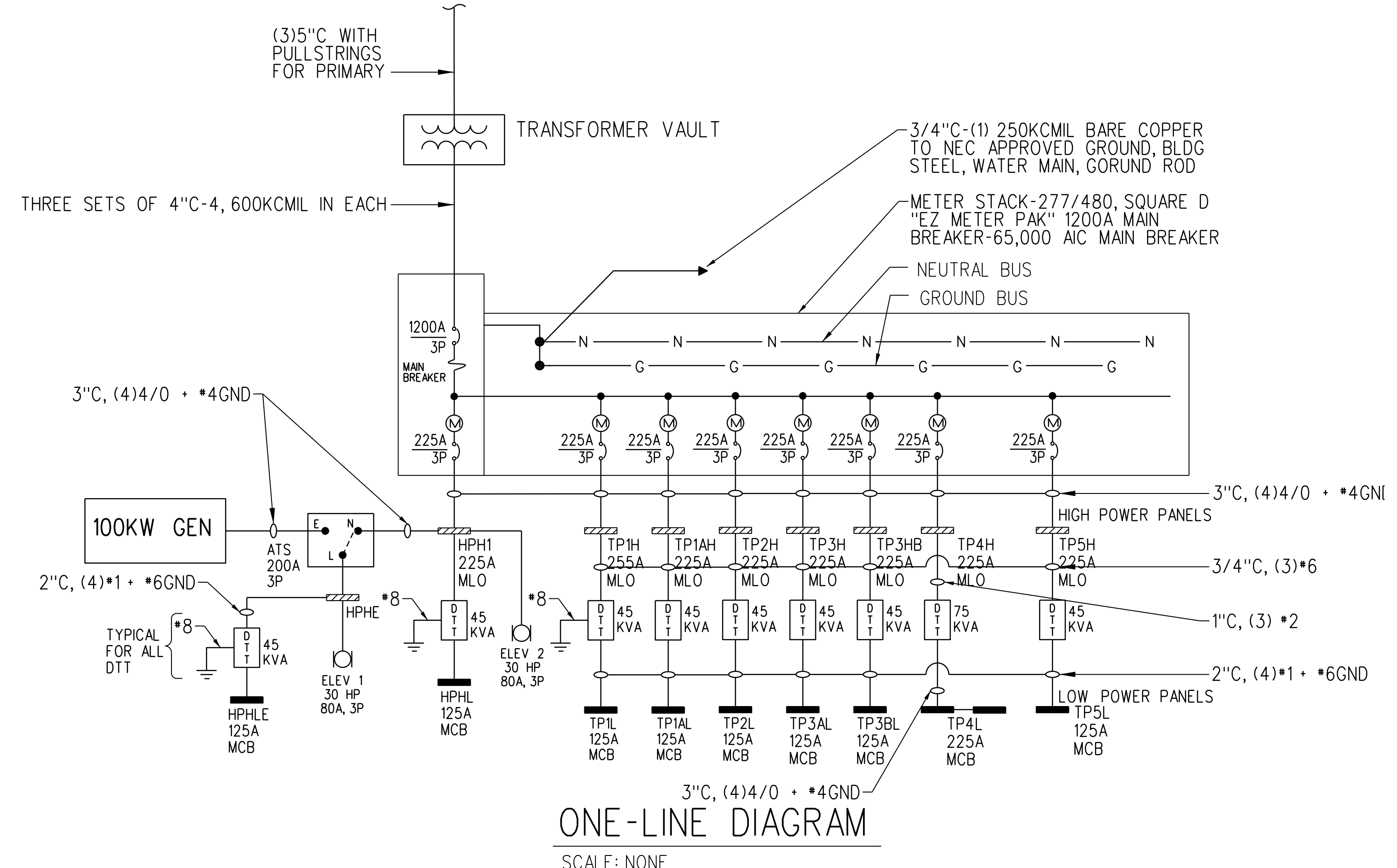
PANEL TP4L (TENANT ELEC CLOSET FLR 4) SECTION 1 120/208 3PH 4W 225 AMP BUS - MCB 42K AIC NEMA TYPE 1 (RECESSED)					
CKT #	LOAD DESCRIPTION	AT	P	CA	DF DA
1	GEN USE RECEPTS & BATHROOM EF-Ts	20	1	10	0.50 5
3	FRIDGE: COLLAB CAFE (GFCI BREAKER)	20	1	12	1.00 12
5	COUNTER RECEPTS: COLLAB CAFE	20	1	5	0.50 2
7	RECEPTS: COLLAB CAFE	20	1	8	0.50 4
9	RECEPTS: WORK AREA 420	20	1	6	0.50 3
11	RECEPTS: IT CLOSET	20	1	3	0.50 2
13	EF-Ts: JANITOR & ELEC CLOSETS	20	1	1	1.00 1
15				1	1.00 1
17	SAC-IT	20	2		1.00 0
19	CRESTON MEDIA WALL: WELCOME 400	20	1		1.00 0
21	RECEPTS: HUDDLE 428 & MTG RM 429	20	1	9	0.50 5
23	FLOOR RECEPTS: WORK AREA 406	20	1	15	0.50 8
25	FLOOR RECEPT & PERIMETER: 406	20	1	6	0.50 3
27	POWER/DATA WHIPS: WORK AREA 406	20	1	15	0.50 8
29	POWER/DATA WHIPS: WORK AREA 406	20	1	15	0.50 8
31	RECEPTS: ROOMS 402 THRU 405	20	1	9	0.50 5
33	FLOOR RECEPT & PERIMETER: 401	20	1	5	0.50 2
35	FLOOR RECEPT & PERIMETER: 401	20	1	6	0.50 3
37	POWER/DATA WHIP: WORK AREA 424	20	1	15	0.50 8
39	RECEPTS: MEETING RM 430	20	1	5	0.50 2
41	RECEPTS: MEETING RM 430	20	1	5	0.50 2

ALL LOADS TO 480V PANEL VIA DTT

AT - Amp Trip  
P - Poles  
A - Amps  
CA - Connected Amperes  
DF - Demand Factor (1 - .1)  
DA - Demand Amperes  
MLO - Main Lug Only  
MCB - Main Circuit Breaker

PANEL TP4L (TENANT ELEC CLOSET FLR 4) SECTION 2 120/208 3PH 4W 225 AMP BUS - MCB 42K AIC NEMA TYPE 1 (RECESSED)					
CKT #	LOAD DESCRIPTION	AT	P	CA	DF DA
43	POWER/DATA WHIP: WORK AREA 424	20	1	15	0.50 8
45	POWER/DATA WHIP: WORK AREA 424	20	1	15	0.50 8
47	POWER/DATA WHIP: WORK AREA 424	20	1	15	0.50 8
49		20	1		0
51		20	1		0
53		20	1		0
55		20	1		0
57		20	1		0
59		20	1		0
61		20	1		0
63		20	1		0
65		20	1		0
67		20	1		0
69		20	1		0
71		20	1		0
73		20	1		0
75		20	1		0
77		20	1		0
79		20	1		0
81		20	1		0
83		20	1		0

PROMDE FEED THRU LUGS TO SECTION 2



Archetype  
Union Wharf  
Portland, ME 04101

BENNETT ENGINEERING  
MECHANICAL - ELECTRICAL  
(207) 865-9475

Architect:  
ARCHETYPE architects  
48 Union Wharf Portland, Maine 04101  
(207) 772-6022 ARCHETYPE@ARCHETYPEPA.COM

Project:  
16 MIDDLE STREET  
OFFICE BUILDING  
MIDDLE STREET  
PORTLAND, MAINE

Revisions:  
02/20/2017: CD ISSUE

Scale:  
1/8" = 1'-0" U.N.O.

Date:  
20 FEB 2017

TILSON TECHNOLOGIES:  
PANEL SCHEDULES &  
ONE-LINE DIAGRAM

E3.02