

POWER GENERAL NOTES

1. EF-Ts LOCATED IN JANITOR ROOM AND ELECTRICAL CLOSEST SHALL BE WIRED FOR CONTINUOUS OPERATION.

2. ALL FIRE ALARM DEVICES SHALL BE CONNECTED TO FACP LOCATED IN GROUND FLOOR UTILITY ROOM.

POWER WORK NOTES

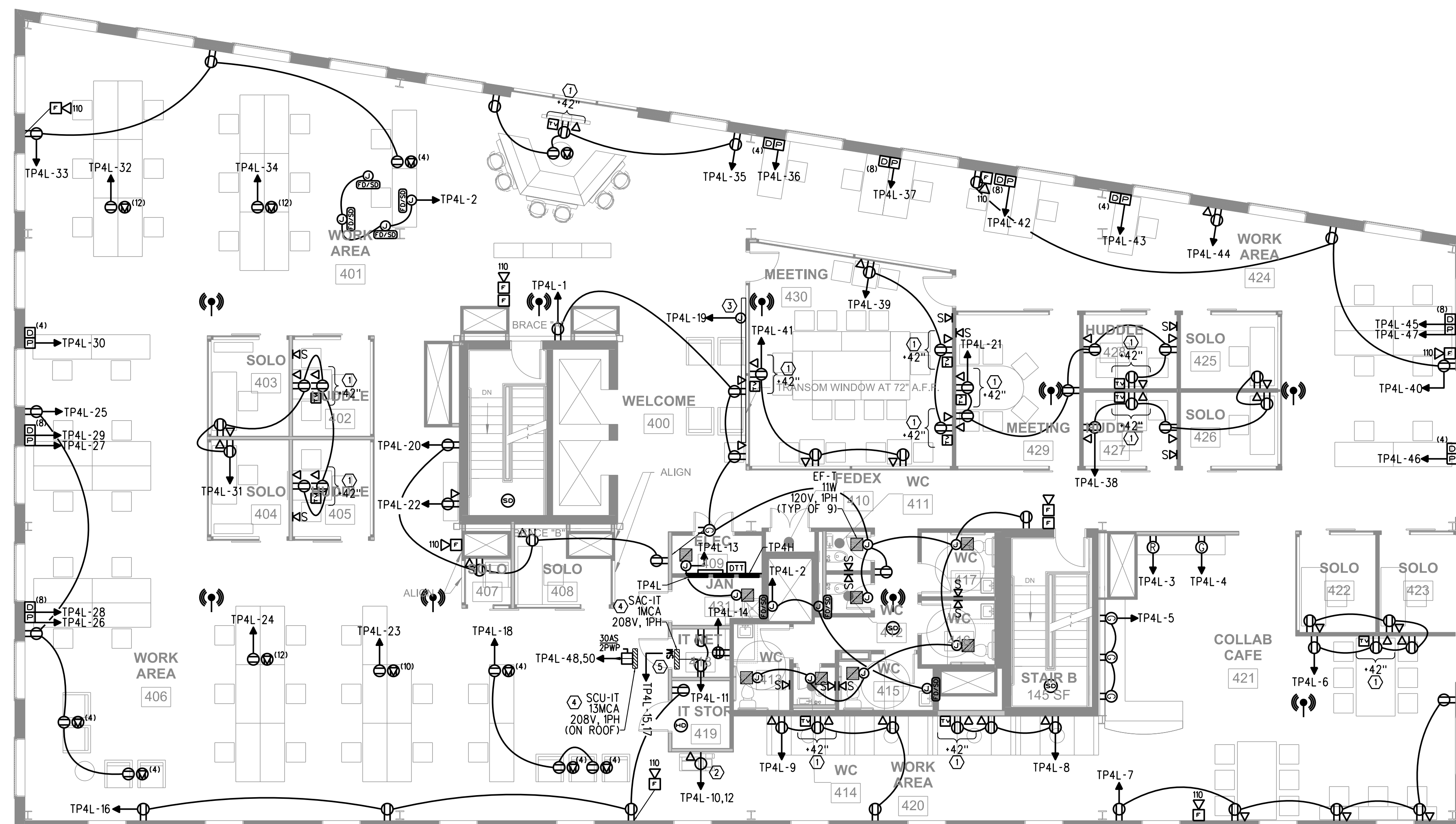
① CONTRACTOR SHALL CONFIRM MOUNTING HEIGHT PRIOR TO ROUGH-IN.

② SPECIAL PURPOSE 220V, SINGLE PHASE RECEPTACLE FOR COPIER. COORDINATE BREAKER SIZE WITH EQUIPMENT SPECIFICATIONS PRIOR TO ROUGH-IN.

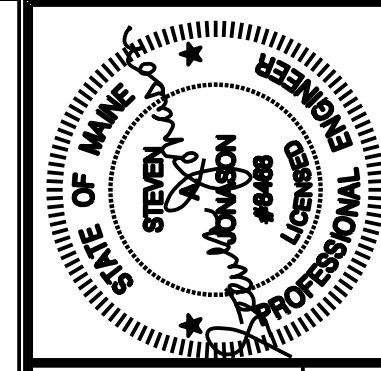
③ CRESTRON MEDIA WALL WITH POWER AND DATA CONNECTION. COORDINATE WITH ARCHITECT AND WALL SYSTEM SUPPLIER PRIOR TO ROUGH-IN.

④ CONTRACTOR SHALL PROVIDE EMPTY 3/4" CONDUIT FOR CONTROL AND POWER WIRING BETWEEN SAC AND CORRESPONDING OUTDOOR UNIT SCU-1 (ON ROOF). COORDINATE WIRE SIZES AND QUANTITIES WITH MECHANICAL CONTRACTOR PRIOR TO ROUGH-IN.

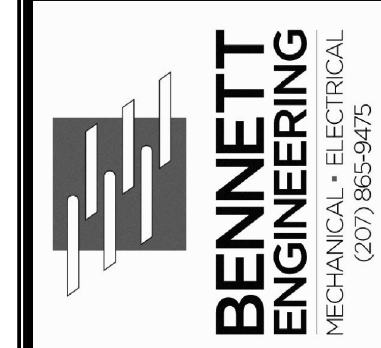
⑤ 20A 2-POLE MOTOR RATED SWITCH SWITCH SHALL BE FLUSH MOUNTED AT 48" AFF. COORDINATE EXACT SWITCH LOCATION WITH EQUIPMENT SUPPLIER PRIOR TO ROUGH-IN.



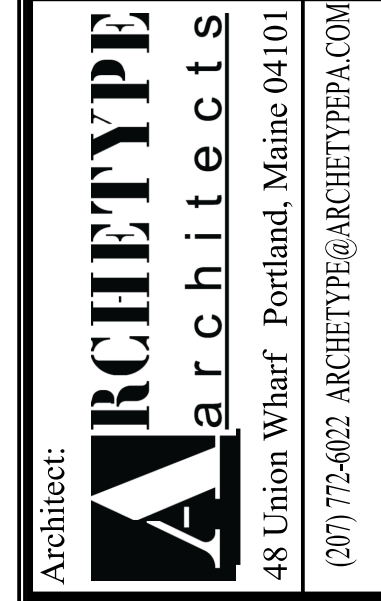
FOURTH FLOOR PLAN
SCALE: 1/8" = 1'-0"



Prepared For: **Archetype**
Union Wharf
Portland, ME 04101



Consultant:



Project: **16 MIDDLE STREET OFFICE BUILDING**
MIDDLE STREET
PORTLAND, MAINE

Revisions:
02/20/2017: CD ISSUE

Date: **20 FEB 2017**
Scale: **1/8" = 1'-0" U.N.O.**
TILSON TECHNOLOGIES:
FOURTH FLOOR POWER PLAN

E2.02