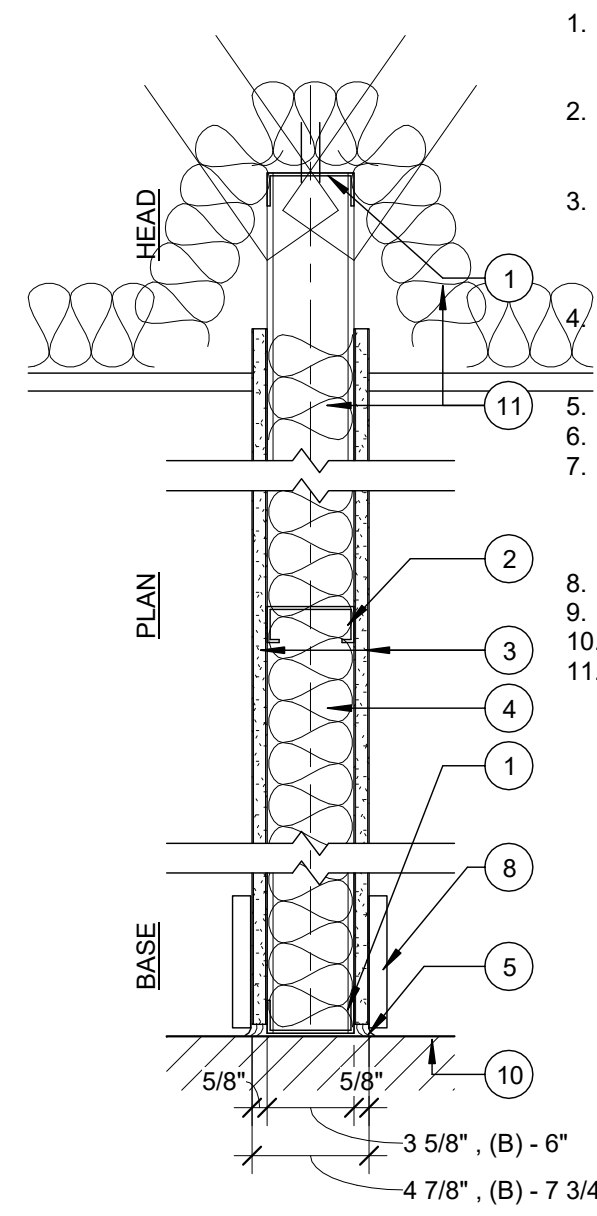


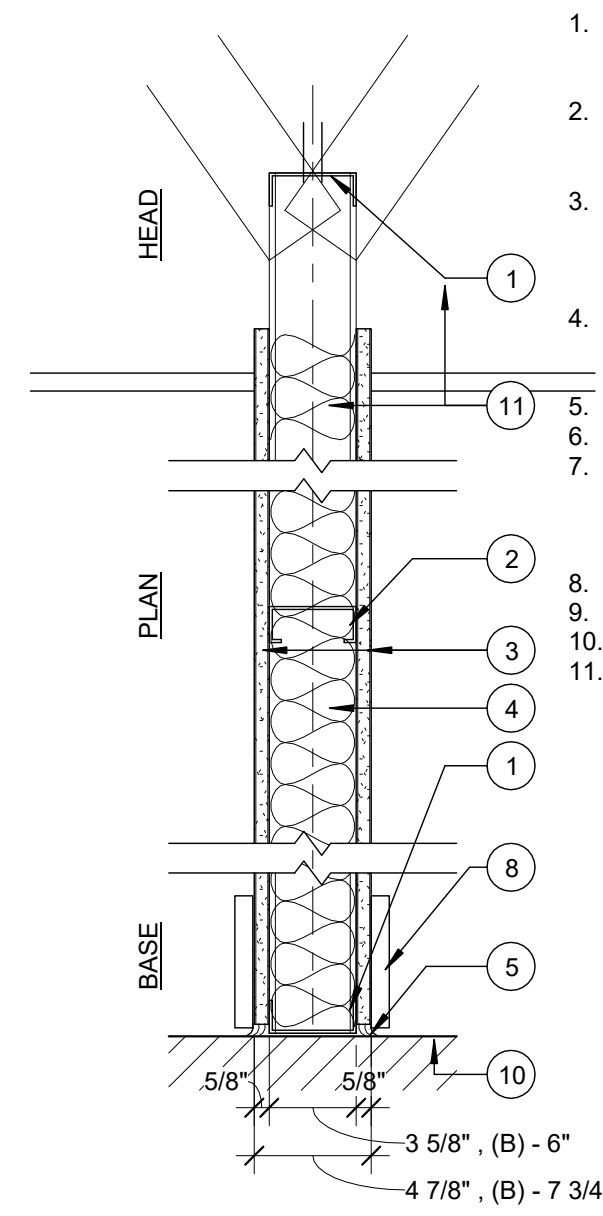
W1	W2
3 5/8"	6"

NON-RATED NON-BEARING ACOUSTICAL PARTITION
 DESIGN NUMBER - N/A



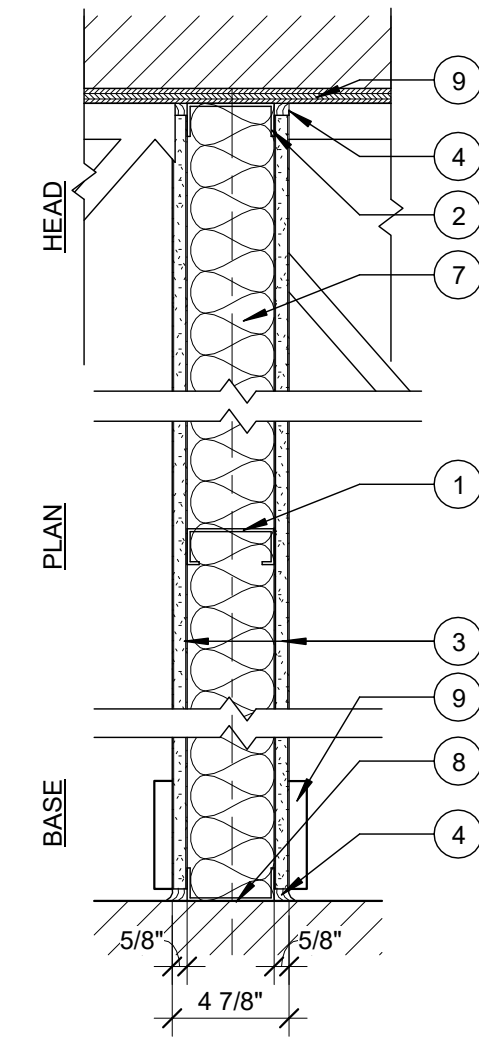
1. **CONT. METAL FLOOR AND CEILING RUNNER** - CHANNEL SHAPED 3 5/8" 25 MSG STEEL WITH 1 1/4" LONG LEGS FASTENERS @ 2'-0" O.C. MAX. WITHIN 1" OF ENDS
2. **STEEL STUDS** - CHANNEL SHAPED 25 MSG STEEL. 3 5/8" STUDS SPACED MAX. 24" O.C. RUN TO 2" ABOVE FINISHED CEILING (USE 6" STUD AT W2 WALLS)
3. **GYPSON BOARD** - (1) LAYER 5/8" GYP. BD. EACH SIDE TO 12" ABOVE CEILING, PAPER SURFACED, APPLIED PERPENDICULAR TO FRAMING WITH 1" TYPE S STEEL SCREWS SPACED 8" O.C.. SEE NOTES FOR GYP. BD. TYPE
4. **SOUND ATTENUATION BATT** - FIBERGLASS BATT WITH UL CLASS AS TO SURFACE BURNING CHARACTERISTICS AND OR FIRE RESISTANCE REQUIRED
5. **SEALANT** - ACOUSTIC SEALANT BOTH SIDES.
6. **BLOCKING - (NOT SHOWN)** WOOD BLOCKING AS NEEDED
7. **TAPE AND COMPOUND - (NOT SHOWN)** VINYL, DRY OR PREMIXED JOINT COMPOUND, APPLIED IN TWO COATS TO JOISTS AND SCREW HEADS, PAPER TAPE, 2 IN. WIDE, EMBEDDED IN FIRST LAYER OF COMPOUND OVER ALL JOINTS.
8. **BASE** - SEE FINISH SCHEDULE
9. UNDERSIDE OF STRUCTURE
10. TOP OF STRUCTURE
11. **SOUND ATTENUATION BATT** - FIBERGLASS BATT WITH UL CLASS AS TO SURFACE BURNING CHARACTERISTICS AND OR FIRE RESISTANCE REQUIRED- RUN BATT OVER TOP OF WALL FOR 3' ON EACH SIDE BETWEEN ADJACENT OFFICES, SOLO, Huddle AND CONFERENCE ROOMS

W3	W4
3 5/8"	6"



1. **CONT. METAL FLOOR AND CEILING RUNNER** - CHANNEL SHAPED 3 5/8" 25 MSG STEEL WITH 1 1/4" LONG LEGS FASTENERS @ 2'-0" O.C. MAX. WITHIN 1" OF ENDS
2. **STEEL STUDS** - CHANNEL SHAPED 25 MSG STEEL. 3 5/8" STUDS SPACED MAX. 24" O.C. RUN TO 2" ABOVE FINISHED CEILING (USE 6" STUD AT W2 WALLS)
3. **GYPSON BOARD** - (1) LAYER 5/8" GYP. BD. EACH SIDE TO 12" ABOVE CEILING, PAPER SURFACED, APPLIED PERPENDICULAR TO FRAMING WITH 1" TYPE S STEEL SCREWS SPACED 8" O.C.. SEE NOTES FOR GYP. BD. TYPE
4. **SOUND ATTENUATION BATT** - FIBERGLASS BATT WITH UL CLASS AS TO SURFACE BURNING CHARACTERISTICS AND OR FIRE RESISTANCE REQUIRED
5. **SEALANT** - ACOUSTIC SEALANT BOTH SIDES.
6. **BLOCKING - (NOT SHOWN)** WOOD BLOCKING AS NEEDED
7. **TAPE AND COMPOUND - (NOT SHOWN)** VINYL, DRY OR PREMIXED JOINT COMPOUND, APPLIED IN TWO COATS TO JOISTS AND SCREW HEADS, PAPER TAPE, 2 IN. WIDE, EMBEDDED IN FIRST LAYER OF COMPOUND OVER ALL JOINTS.
8. **BASE** - SEE FINISH SCHEDULE
9. UNDERSIDE OF STRUCTURE
10. TOP OF STRUCTURE
11. **SOUND ATTENUATION BATT** - FIBERGLASS BATT WITH UL CLASS AS TO SURFACE BURNING CHARACTERISTICS AND OR FIRE RESISTANCE REQUIRED-

W5	W6
3 5/8"	6"



1. **STUDS** - CHANNEL-SHAPED, MIN 3-5/8" WIDE BY 1-1/4" DEEP WITH 5/16" FOLDED BACK RETURN FLANGE LEGS. FABRICATED FROM NO. 25 MSG GALV STEEL. MAX STUD SPACING 24" O.C. STUDS TO BE CUT 1" LESS THAN ASSEMBLY HEIGHT. (6" STUD AT W6)
2. **CEILING RUNNER** - CHANNEL-SHAPED TOP TRACK, MIN. 3 5/8" WIDE BY 1 1/4" DEEP, FABRICATED FROM NO. 20 MSG GALV STEEL. TOP TRACK SITS INSIDE VERTICALLY SLOTTED HEAD TRACK, ATTACHED TO CEILING WITH FASTENERS, 24" O.C. MAX. GYPSUM AND VERTICAL STUDS FASTENED TO TOP TRACK ONLY (6" AT W6)
3. **TYPE X GYPSON BOARD** - (1) LAYER PROPRIETARY 5/8" TYPE X GYP. BD. EACH SIDE, APPLIED PERPENDICULAR TO STUDS WITH 1" TYPE S DRYWALL SCREWS 8" O.C. AT VERT. JNTS AND INTERMEDIATE STUDS AND 12" O.C. AT TOP AND BOTTOM RUNNER. SEE NOTES FOR GYP. BD. TYPE (STAGGER GYP. BD. JNTS 24" ON NON-FURRED SIDE.) SEAL GYP BOARD TO TRUSS WITH FIRE CAULKING. **USE TYPE MRX GYP BD AT TOILET/LOCKER ROOMS.**
4. **CAULKING AND SEALANTS** - A BEAD OF ACOUSTICAL SEALANT APPLIED AROUND THE PARTITION PERIMETER FOR SOUND CONTROL, BOTH SIDES OF WALL
5. **BLOCKING - (NOT SHOWN)** WOOD BLOCKING AS NEEDED
6. **TAPE AND COMPOUND - (NOT SHOWN)** VINYL, DRY OR PREMIXED JOINT COMPOUND, APPLIED IN TWO COATS TO JOISTS AND SCREW HEADS, PAPER TAPE, 2 IN. WIDE, EMBEDDED IN FIRST LAYER OF COMPOUND OVER ALL JOINTS.
7. **SAFB SOUND INSULATION**
8. **FLOOR RUNNER** - CHANNEL-SHAPED RUNNERS, MIN. 3 5/8" WIDE W/ DEEP LEGS, FABRICATED FROM NO. 20 MSG GALV STEEL. ATTACHED TO FLOOR WITH FASTENERS, 24" O.C. MAX.
9. **BASE** - SEE FINISH SCHEDULE

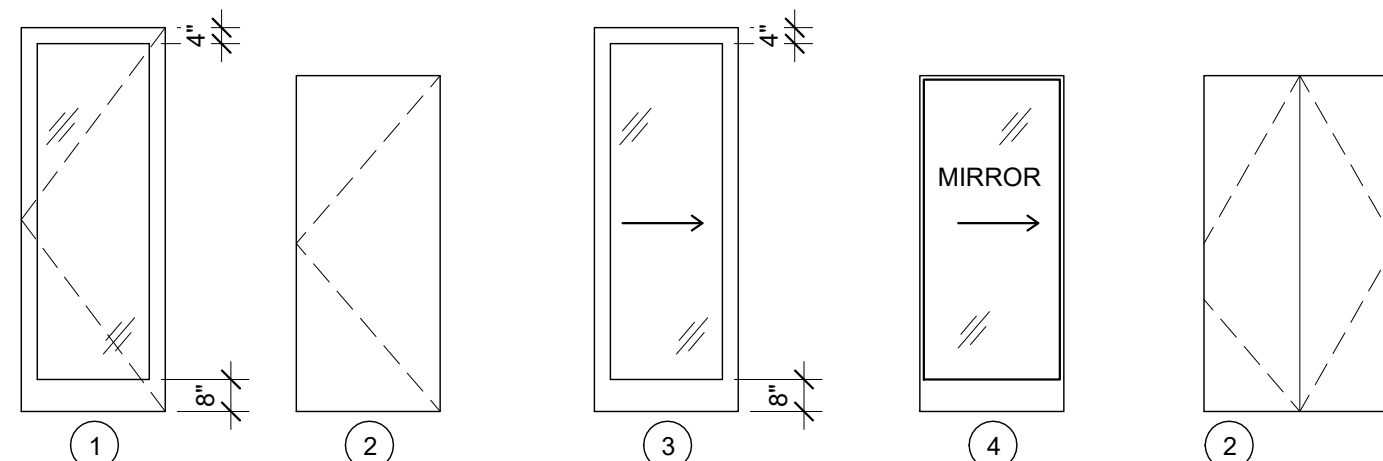
1 | WALL TYPE 1 AND 2
 1 1/2" = 1'-0"

2 | WALL TYPES 3 AND 4
 1 1/2" = 1'-0"

3 | WALL TYPE 5
 1 1/2" = 1'-0"

TILSON DOOR SCHEDULE

Level	DOOR No.	LOCATION	DOOR		THCK	TYPE	MAT'L	FINISH	FRAME THRESHOLD		Hardware	LABEL	CLOSER	SWEEP	REMARKS
			W	H					D	MAT'L					
3RD FLOOR															
3RD FLOOR	T00	OPEN OFFICE	3'-0"	9'-0"	1 3/4"	1	GLASS	ALUM	ALUM	STOREFRONT	BRUSHED				KEY FOB
3RD FLOOR	T01	WC	3'-0"	7'-0"	1 3/4"	2	SC WOOD	POLY	ALUM	MTL	PTD				PROVIDE LOUVER
3RD FLOOR	T02	WC	3'-0"	7'-0"	1 3/4"	2	SC WOOD	POLY	ALUM	MTL	PTD				PROVIDE LOUVER
3RD FLOOR	T03	WC	2'-8"	7'-0"	1 3/4"	2	SC WOOD	POLY	ALUM	MTL	PTD				PROVIDE LOUVER
3RD FLOOR	T04	Huddle	3'-0"	8'-0"	1 1/2"	3	GLASS	ALUM	ALUM	STOREFRONT	BRUSHED				PASSAGE
3RD FLOOR	T05	SOLO	3'-0"	8'-0"	1 1/2"	3	GLASS	ALUM	ALUM	STOREFRONT	BRUSHED				PASSAGE
3RD FLOOR	T06	LOUNGE	3'-0"	8'-0"	1 3/4"	1	GLASS	ALUM	ALUM	STOREFRONT	BRUSHED				KEY FOB
3RD FLOOR	T07	GUEST	3'-0"	7'-0"	1 3/4"	2	SC WOOD	POLY	ALUM	MTL	PTD				KEY FOB
3RD FLOOR	T07A	GUEST	2'-10"	6'-8"	1 1/2"	4	WD/ MIRROR	POLY	ALUM						PRIVACY
3RD FLOOR	T08	GUEST	3'-0"	7'-0"	1 3/4"	2	SC WOOD	POLY	ALUM	MTL	PTD				KEY FOB
3RD FLOOR	T08A	GUEST	2'-10"	6'-8"	1 1/2"	4	WD/ MIRROR	POLY	ALUM						PRIVACY
3RD FLOOR	T09	GUEST	3'-0"	7'-0"	1 3/4"	2	SC WOOD	POLY	ALUM	MTL	PTD				KEY FOB
3RD FLOOR	T09A	GUEST	2'-10"	6'-8"	1 1/2"	4	WD/ MIRROR	POLY	ALUM						PRIVACY
3RD FLOOR	T10	ADA GUEST	3'-0"	7'-0"	1 3/4"	2	SC WOOD	POLY	ALUM	MTL	PTD				KEY FOB
3RD FLOOR	T10A	ADA GUEST	3'-0"	7'-0"	1 3/4"	4	WD/ MIRROR	POLY	ALUM						PRIVACY
3RD FLOOR	T11	JAN	3'-0"	7'-0"	1 3/4"	2	SC WOOD	POLY	ALUM	MTL	PTD				PASSAGE
3RD FLOOR	T12	LOUNGE	3'-0"	8'-0"	1 3/4"	1	GLASS	ALUM	ALUM	STOREFRONT	BRUSHED				KEY FOB
3RD FLOOR	T13	LOUNGE	2'-8"	7'-0"	1 3/4"	2	SC WOOD	POLY	ALUM	MTL	PTD				PASSAGE
3RD FLOOR	T14	OPEN OFFICE	3'-0"	8'-0"	1 3/4"	1	GLASS	ALUM	ALUM	STOREFRONT	BRUSHED				PRIVACY
4TH FLOOR															
4TH FLOOR	T15	Huddle	3'-0"	8'-0"	1 1/2"	3	GLASS	ALUM	ALUM	STOREFRONT	BRUSHED				PASSAGE
4TH FLOOR	T16	SOLO	3'-0"	8'-0"	1 1/2"	3	GLASS	ALUM	ALUM	STOREFRONT	BRUSHED				PASSAGE
4TH FLOOR	T17	SOLO	3'-0"	8'-0"	1 1/2"	3	GLASS	ALUM	ALUM	STOREFRONT	BRUSHED				PASSAGE
4TH FLOOR	T18	Huddle	3'-0"	8'-0"	1 1/2"	3	GLASS	ALUM	ALUM	STOREFRONT	BRUSHED				PASSAGE
4TH FLOOR	T19	SOLO	3'-0"	8'-0"	1 1/2"	3	GLASS	ALUM	ALUM	STOREFRONT	BRUSHED				PASSAGE
4TH FLOOR	T20	SOLO	3'-0"	8'-0"	1 1/2"	3	GLASS	ALUM	ALUM	STOREFRONT	BRUSHED				PASSAGE
4TH FLOOR	T21	JAN	4'-0"	7'-0"	1 3/4"	5	SC WOOD	POLY	ALUM	MTL	PTD				PASSAGE
4TH FLOOR	T22	FEDEX	4'-0"	7'-0"	1 3/4"	5	SC WOOD	POLY	ALUM	MTL	PTD				PASSAGE
4TH FLOOR	T23	WC	2'-6"	7'-0"	1 3/4"	2	SC WOOD	POLY	ALUM	MTL	PTD				PROVIDE LOUVER
4TH FLOOR	T24	WC	2'-6"	7'-0"	1 3/4"	2	SC WOOD	POLY	ALUM	MTL	PTD				PROVIDE LOUVER
4TH FLOOR	T25	WC	3'-0"	7'-0"	1 3/4"	2	SC WOOD	POLY	ALUM	MTL	PTD				PROVIDE LOUVER
4TH FLOOR	T26	WC	2'-3"	7'-0"	1 3/4"	2	SC WOOD	POLY	ALUM	MTL	PTD				PROVIDE LOUVER
4TH FLOOR	T27	WC	3'-0"	7'-0"	1 3/4"	2	SC WOOD	POLY	ALUM	MTL	PTD				PROVIDE LOUVER
4TH FLOOR	T28	WC	3'-0"	7'-0"	1 3/4"	2	SC WOOD	POLY	ALUM	MTL	PTD				PROVIDE LOUVER
4TH FLOOR	T29	WC	3'-0"	7'-0"	1 3/4"	2	SC WOOD	POLY	ALUM	MTL	PTD				PROVIDE LOUVER
4TH FLOOR	T30	IT NET	3'-0"	7'-0"	1 3/4"	2	SC WOOD	POLY	ALUM	MTL	PTD				KEY FOB
4TH FLOOR	T31	IT STOR	3'-0"	7'-0"	1 3/4"	2	SC WOOD	POLY	ALUM	MTL	PTD				KEY FOB
4TH FLOOR	T32	SOLO	3'-0"	8'-0"	1 1/2"	3	GLASS	ALUM	ALUM	STOREFRONT	BRUSHED				PASSAGE
4TH FLOOR	T33	SOLO	3'-0"	8'-0"	1 1/2"	3	GLASS	ALUM	ALUM	STOREFRONT	BRUSHED				PASSAGE
4TH FLOOR	T34	MEETING	3'-0"	8'-0"	1 3/4"	1	GLASS	ALUM	ALUM	STOREFRONT	BRUSHED				PASSAGE
4TH FLOOR	T35	SOLO	3'-0"	8'-0"	1 1/2"	3	GLASS	ALUM	ALUM	STOREFRONT	BRUSHED				PASSAGE
4TH FLOOR	T36	SOLO	3'-0"	8'-0"	1 1/2"	3	GLASS	ALUM	ALUM	STOREFRONT	BRUSHED				PASSAGE
4TH FLOOR	T37	Huddle	3'-0"	8'-0"	1 1/2"	3	GLASS	ALUM	ALUM	STOREFRONT	BRUSHED				PASSAGE
4TH FLOOR	T38	Huddle	3'-0"	8'-0"	1 1/2"	3	GLASS	ALUM	ALUM	STOREFRONT	BRUSHED				PASSAGE
4TH FLOOR	T39	MEETING	3'-0"	8'-0"	1 1/2"	3	GLASS	ALUM	ALUM	STOREFRONT	BRUSHED				PASSAGE
4TH FLOOR	T40	MEETING	3'-0"	8'-0"	1 1/2"	3	GLASS	ALUM	ALUM	STOREFRONT	BRUSHED				PASSAGE
4TH FLOOR	T41	MEETING	3'-0"	8'-0"	1 3/4"	1	GLASS	ALUM	ALUM	STOREFRONT	BRUSHED				PASSAGE
4TH FLOOR	T42	ELEC	3'-0"	7'-0"	1 3/4"	2	SC WOOD	POLY	ALUM	MTL	PTD				PASSAGE



5 | DOORS
 1/4" = 1'-0"



Prepared For:
 16 Middle Street
 Associates, LLC

Consultant:
 Architect:
ARCHETYPE
 architects
 48 Union Wharf Portland, Maine 04101
 (207) 772-0022 ARCHTYPE@ARCHTYPEPA.COM

Project:
 16 Middle Street
 Condominium

Revisions:

Scale: As indicated
 Date: MAR. 1, 2017
 TILSON FIT UP
 DETAILS