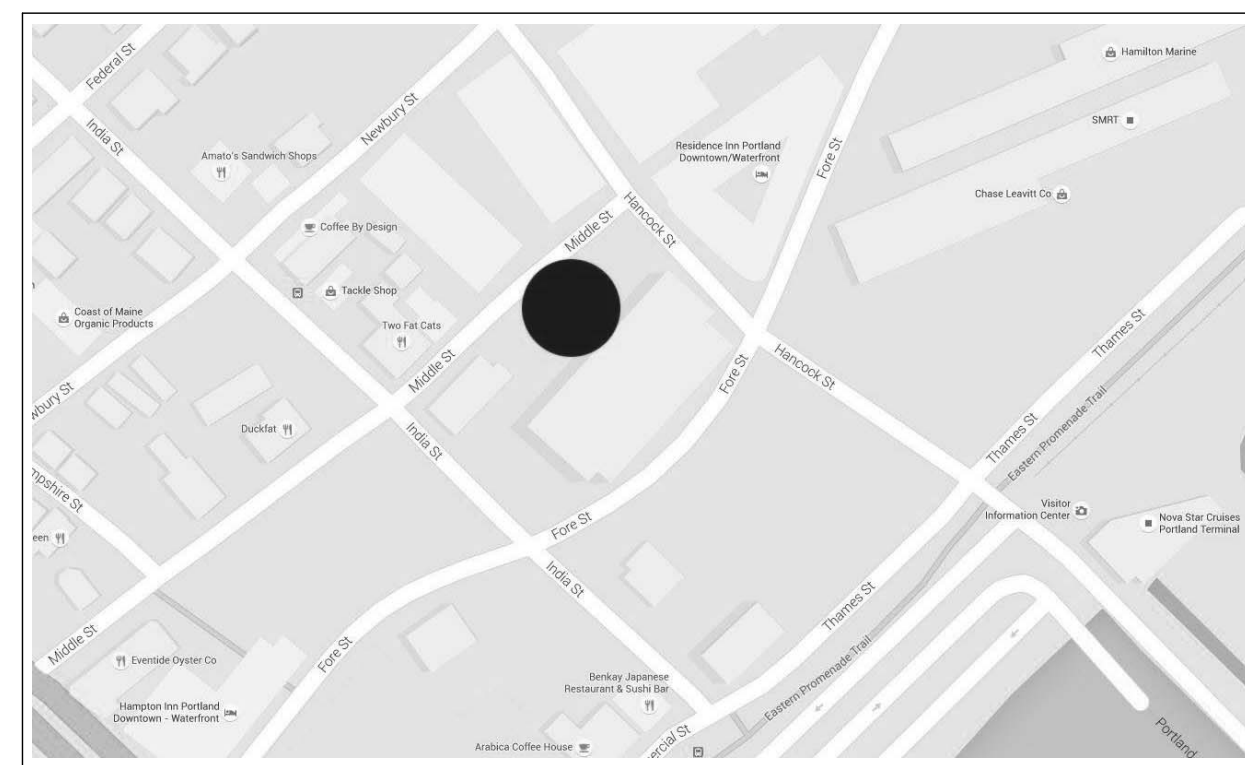


16 MIDDLE

16 MIDDLE ST PORTLAND, MAINE

DATE OF ISSUE

SEPTEMBER 6, 2016



LOCATION MAP

NOT TO SCALE

CONTACTS

Client:
16 Middle St. Associates,
LLC
470 Fore Street,
Suite 400
Portland ME,
04101

Architect:
Archetype Architects
48 Union Wharf
Portland, ME
04101
207.772.6022
xxxxx

Structural Engineer:
Veitas and Veitas
639 Granite Street
Suite 101
Braintree, MA
02184
781.843.2863

Electrical Engineer:
Bennett Engineering
7 Bennett Road
Freeport, ME
04032
207.865.9475

Mechanical Engineer:
Bennett Engineering
7 Bennett Road
Freeport, ME
04032
207.865.9475

Civil Engineer:
Stantec
778 Main Street
Suite 8
South Portland, ME
04106
207.775.1121



RELEVANT CODES

NFPA 101

New Business Occupancy Chapter 38
Building construction is II (000) and I (332)
1st floor occupancies are **separated** from floors 2 - 5

1st Floor
Potential use for Business, Assembly, Mercantile or Storage
Existing Use - For parking garage entry drive

2nd - 5th Floors
Business Use

Ordinary Hazard
Min. construction requirements

Occupant Load

1st Floor potential occupant load
Largest potential occupant load is from assembly use
2,228 sqft / 100 sqft/person = 22
4,456 sqft / 15 sqft/person = 297

2nd - 5th Floors occupant load
10,712 sqft / 100 sqft/person = 107

Means of egress shall be per Chapter 7

Stairs to comply w/7.2.3
Alternating tread devices permitted
38.2.2.11

Area of refuge not required w/sprinkler
Capacity of means of egress
107 occupants x 3'x8" = 32.1"
Min. corridor width = 44"
Street floor exits shall be sufficient for street
floor load plus stair load
2 exits accessible from every part of every story

Arrangement of means of egress
Exits at 1/3 diagonal
Dead ends = 50ft w/sprinkler
Common path = 100' w/sprinkler
Travel distance = 300' w/sprinkler
Emergency lighting required
Vertical openings = 2 hours
Interior finish
Exits and exit access corridors Class A or B
Interior walls and ceilings Class C
Floor Finish
In exits Class 1 or 2
Alarm required
Initiation by sprinkler
Portable extinguishers required per 9
No corridor rating required w/sprinkler

38.1.5
38.6

38.2
38.2.2.3.1

38.2.2.12.2

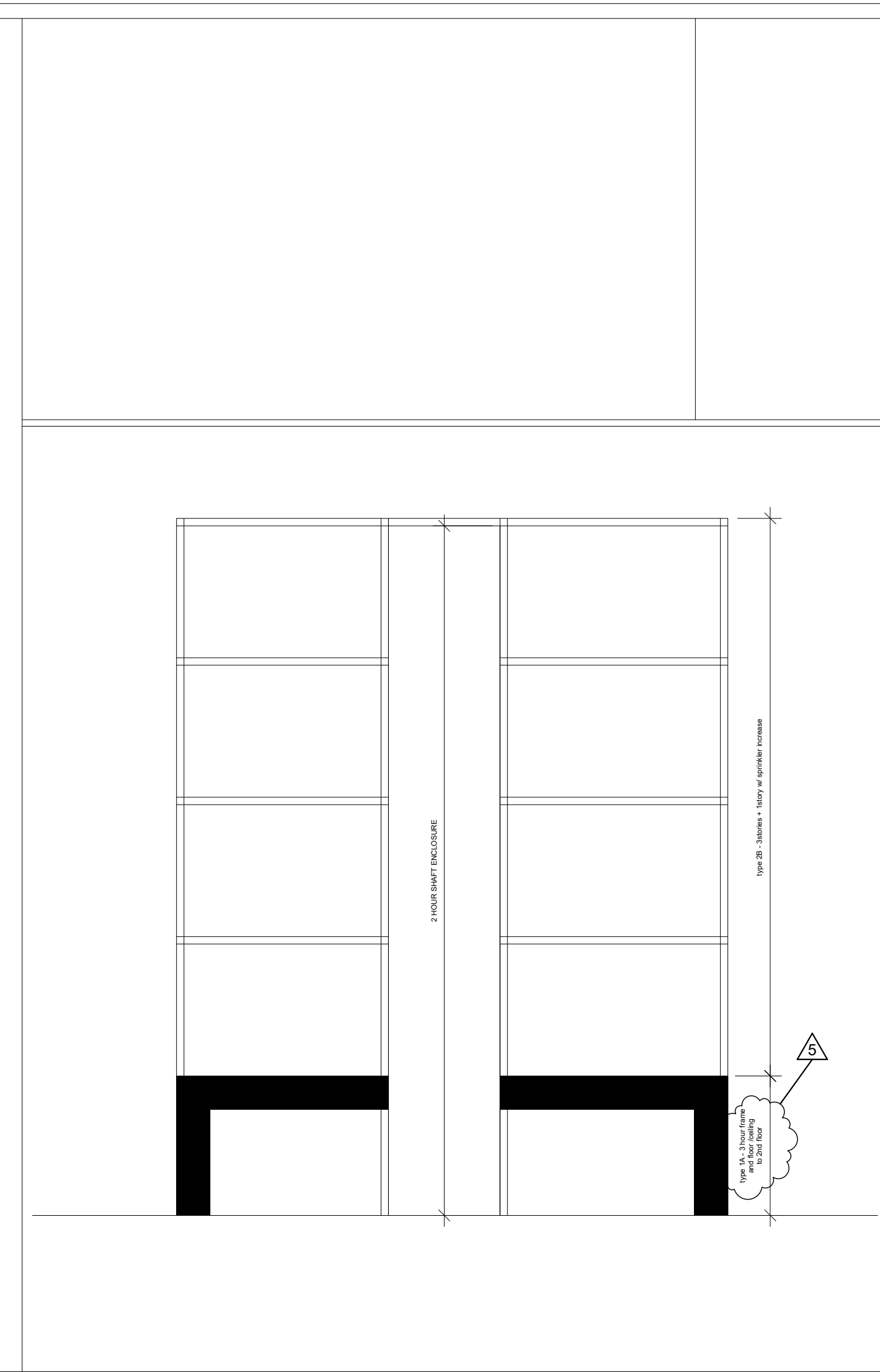
38.2.3.1
38.2.3.2
38.2.3.3

38.2.4.1

38.2.5
7.5.1.3.3
38.2.5.2.1
38.2.5.3.2

38.2.6.3
38.2.9
8.6.5

38.3.3.2.1
38.3.3.2.1
38.3.3.3
38.3.4.1
38.3.4.2(3)
38.3.5
38.3.6.1(3)



DRAWING LIST

SK01 BRICK SHELF LOCATIONS
SK02 PRECAST SHELF LOCATIONS
SK03 STAIR A - REVISED DIMENSIONS
SK04 STAIR B - REVISED DIMENSIONS

CIVIL DRAWINGS

C1.0 Cover Sheet
C1.1 General Notes and Legend
C2.0 Boundry and Topographic Survey
C2.2 Existing Conditions and Demolition Plan
C2.3 Construction Management Plan
C3.0 Site Layout Plan
C4.0 Grading, Drainage and Erosion Control Plan
C5.0 Utility Plan
C6.0 Pavement, Curb and Sidewalk Details
C6.1 Utility and Miscellaneous Details
C6.2 Utility and Miscellaneous Details
C6.3 Utility and Miscellaneous Details
L1.0 Landscape Plan

STRUCTURAL DRAWINGS

S1.01 Foundation Plan
S1.02 Second Floor Framing Plan
S1.03 Third Floor Framing Plan
S1.04 Fourth Floor Framing Plan
S1.05 Fifth Floor Framing Plan
S1.06 Roof Framing Plan
S1.07 Part Plans
S2.01 General Notes
S2.02 Typical Details
S2.03 Typical Details
S2.04 Typical Details
S2.05 Typical Details
S2.06 Typical Details
S3.01 Column Schedule and Pier Details
S3.02 Brace Framing Elevations and Details
S4.01 Foundation Sections and Details
S4.02 Foundation Sections and Details
S4.03 Grade Beam Elevations
S5.01 Steel Sections and Details
S5.02 Steel Sections and Details

ARCHITECTURAL DRAWINGS

A1.01 First Floor Plan
A1.02 Second Floor Plan
A1.03 Third Floor Plan
A1.04 Fourth Floor Plan
A1.05 Fifth Floor Plan
A1.06 Roof Plan
A2.01 Building Elevations
A2.02 Building Elevations
A3.01 Building Sections
A3.11 Elevator Section and Details
A3.12 Stair Sections and Details
A3.13 Stair Sections and Details
A3.21 Wall Sections
A3.22 Wall Sections
A4.00 Wall Types
A4.01 Wall, Floor, Ceiling, Roof Types
A5.00 Details
A5.01 Details
A5.02 Details
A7.01 RCP - First Floor
A8.01 Door and Window Schedule
A8.03 Precast Schedule

GENERAL

CS1.2 CODE SUMMARY

ELECTRICAL DRAWINGS

E1.1 First Floor Electrical Plan
E1.2 Typical Floor Electrical Plan
E1.3 Roof Electrical Plan
E1.4 Notes, Abbreviations and Symbols
E1.5 House Panel Schedules
E1.6 Tenant Panel Schedules

MECHANICAL DRAWINGS

M1.01 HVAC First Floor Plan
M1.02 HVAC 2,3,4 Floor Plans
M1.03 HVAC Fifth Floor Plan
M1.04 HVAC Roof Plan
M2.01 Mechanical Details and Legend
M2.02 Mechanical Details
M2.03 Mechanical Schedules