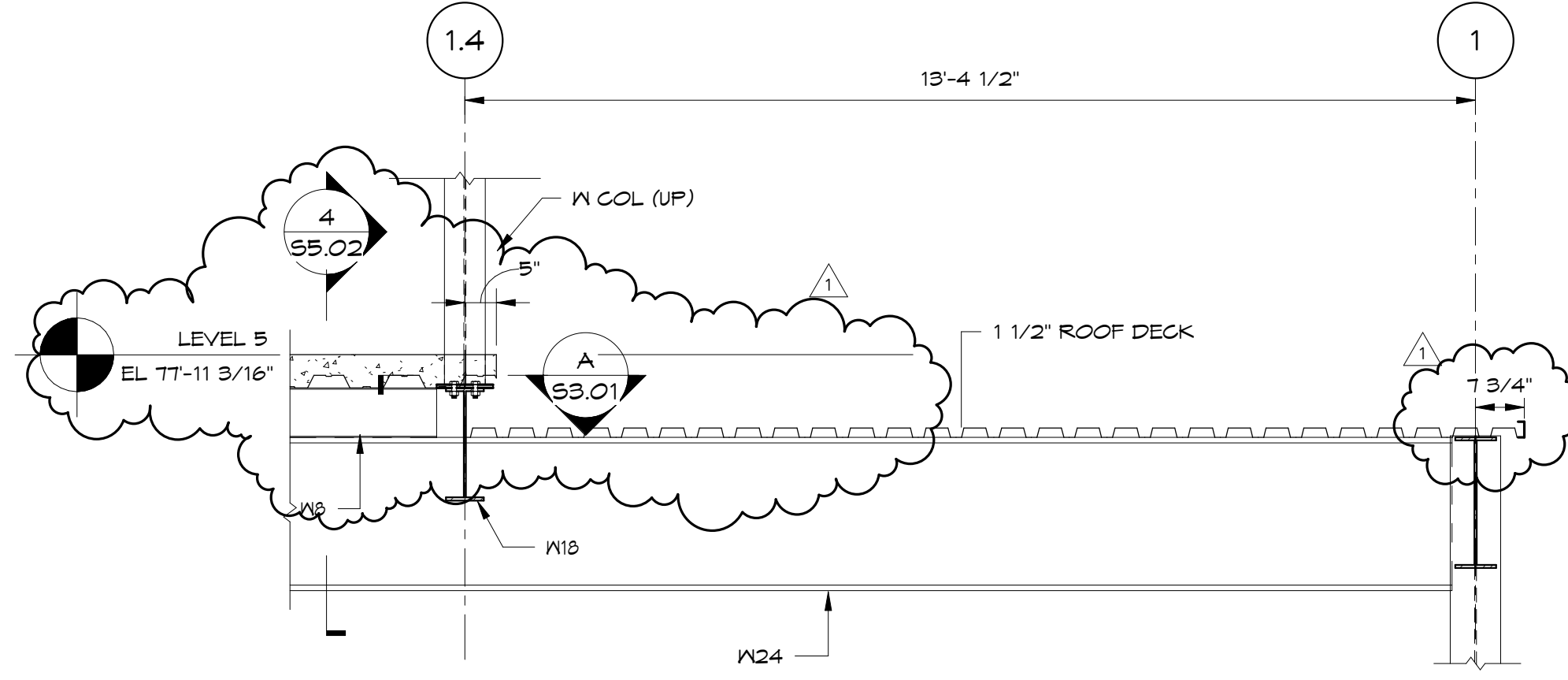
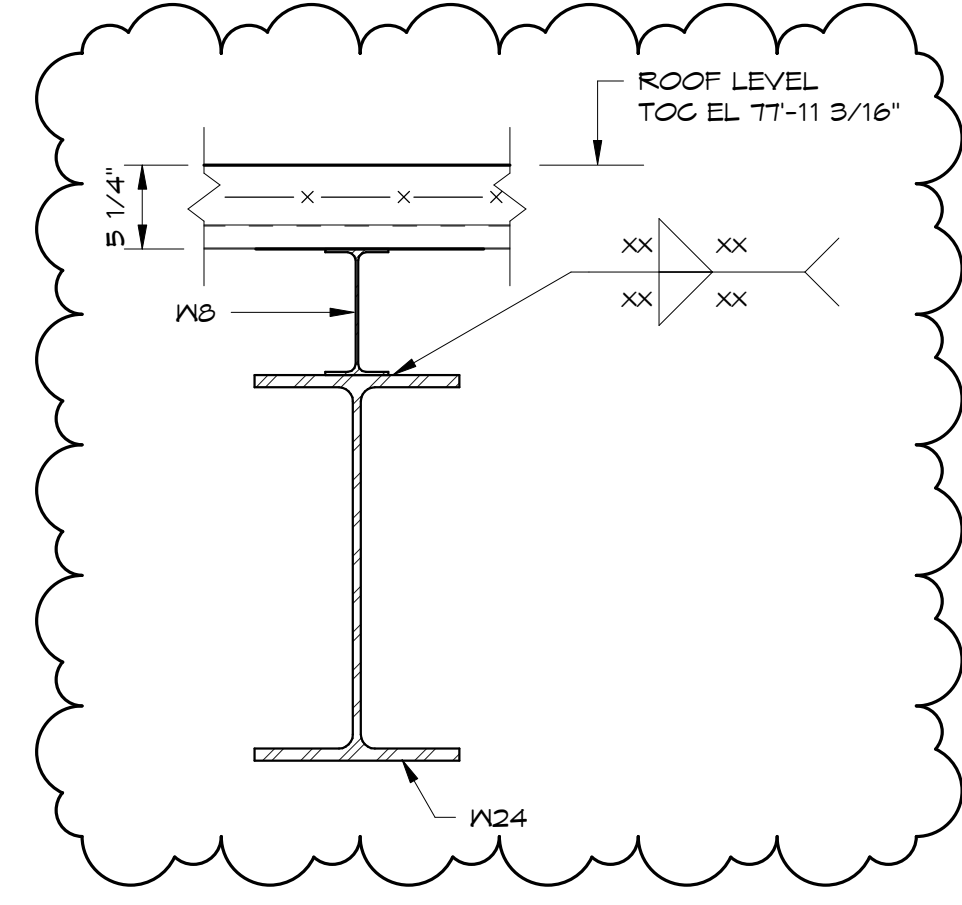


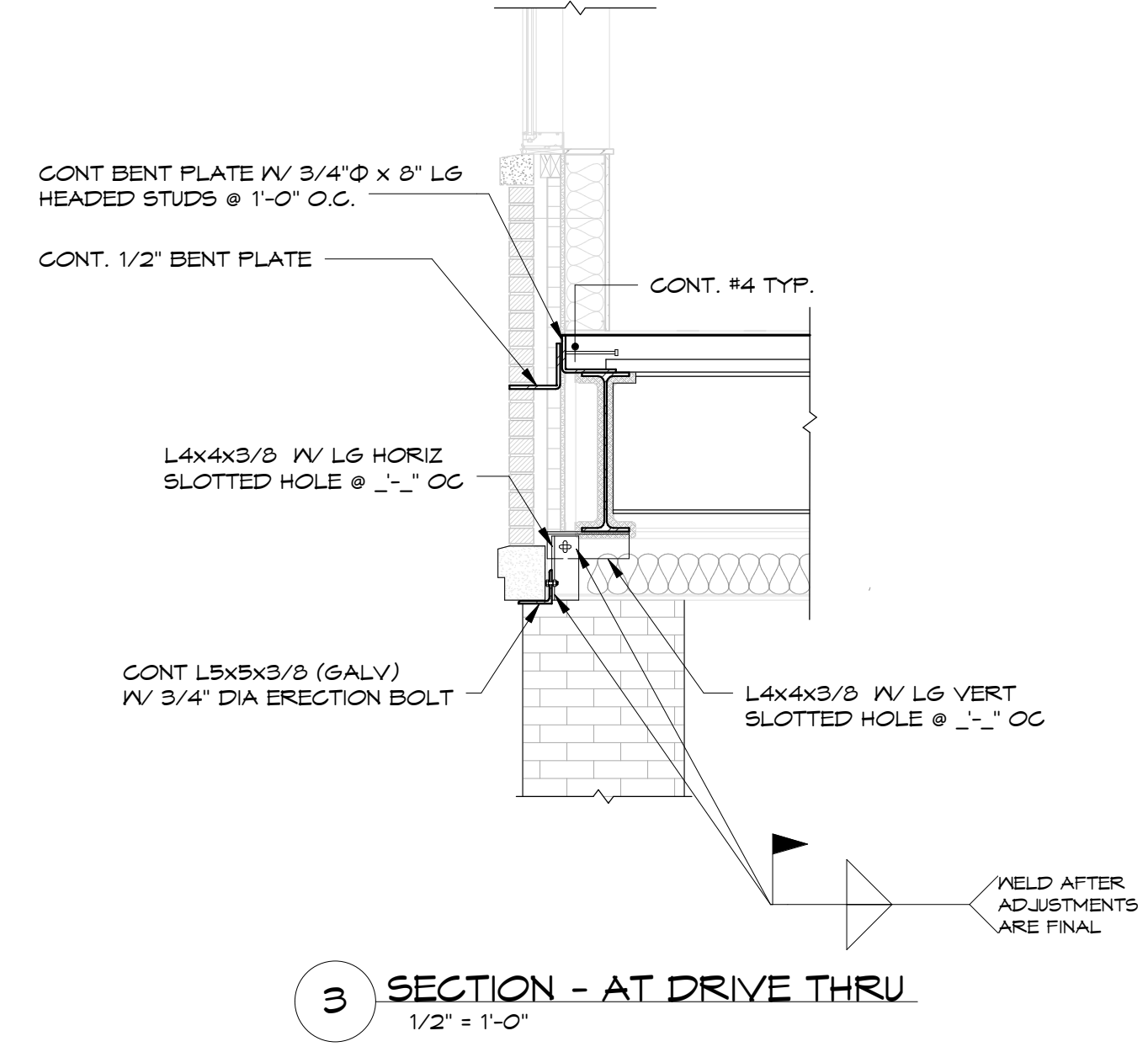
1 SECTION
1/2" = 1'-0"



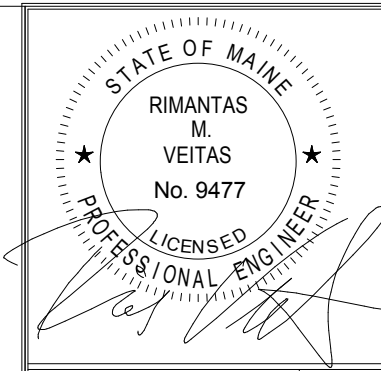
2 SECTION
1/2" = 1'-0"



4 SECTION
1" = 1'-0"



3 SECTION - AT DRIVE THRU
1/2" = 1'-0"



Prepared For:
BATEMAN PARTNERS, LLC
Portland, ME 04112

Consulting Engineer:
VEITAS & VEITAS
engineers
638 Granite Street, Suite 101
Brunswick, Maine 02914
TEL: (207) 786-2800 FAX: (207) 786-2805

Architect:
ARCHETYPE
architects
48 Union Wharf Portland, Maine 04101
(207) 772-6022 Fax (207) 772-4056

Project:
16 MIDDLE STREET
MIDDLE STREET
PORTLAND, MAINE

Revisions:

01/15/16	ISSUED FOR FDN. PERMIT
06/03/16	ISSUED FOR BUILDING PERMIT
06/14/16	ISSUED FOR CONSTRUCTION
07/17/16	ISSUED FOR ADDENDUM #1

Date: 01/15/16
Scale:
STEEL SECTIONS AND DETAILS

S5.02