

Prepared For:  
**BATEMAN PARTNERS, LLC**  
 P.O. BOX 7486  
 Portland, ME 04112

Consulting Engineer:  
**VEITAS & VEITAS** engineers  
 68 Granite Street, Suite 101  
 Bangor, Maine 04401  
 Tel: (207) 686-7486 Fax: (207) 686-2905

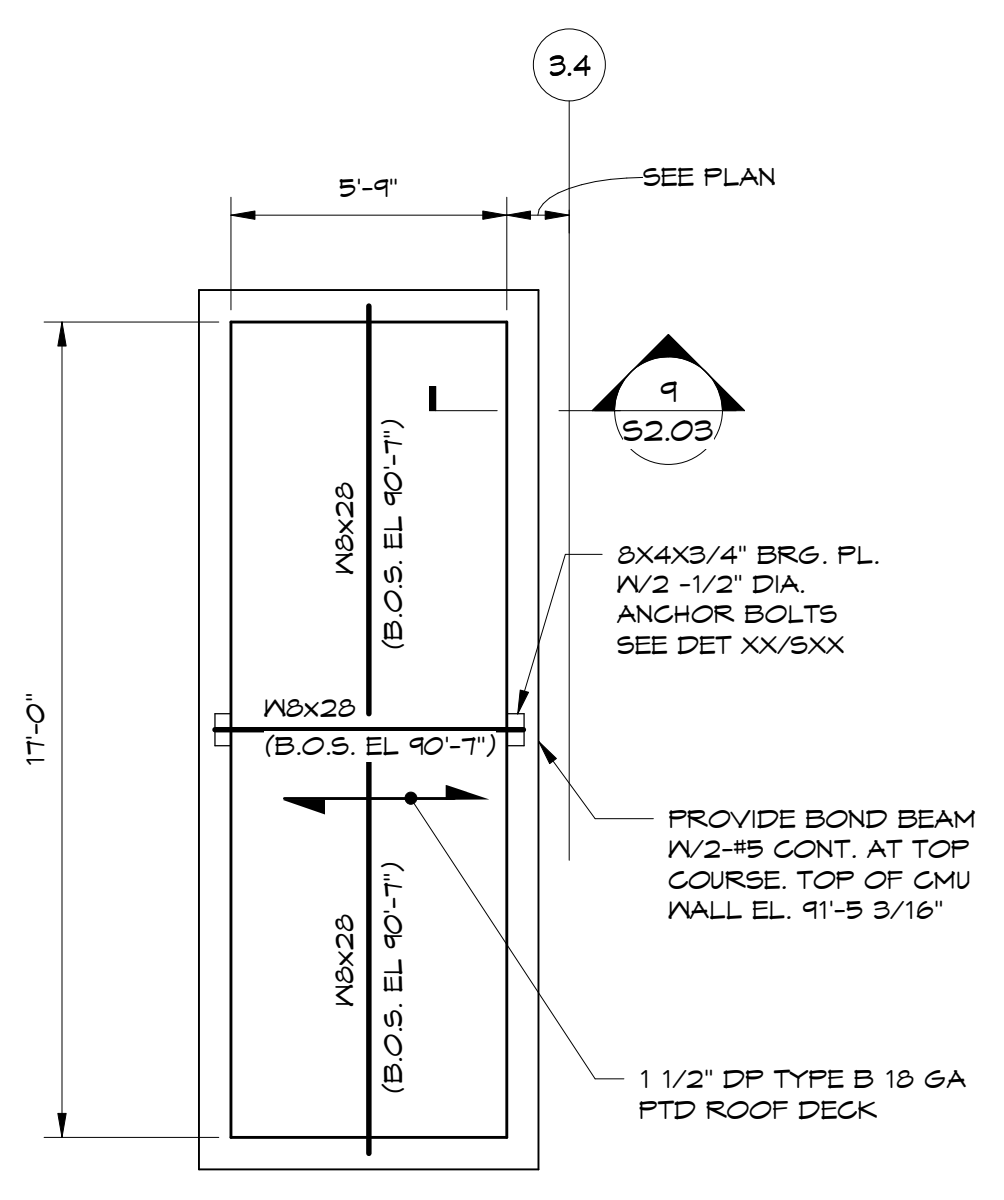
Architect:  
**ARCHETYPE** architects  
 48 Union Wharf Portland, Maine 04101  
 (207) 772-6022 Fax (207) 772-4056

Project:  
**16 MIDDLE STREET**  
 MIDDLE STREET  
 PORTLAND, MAINE

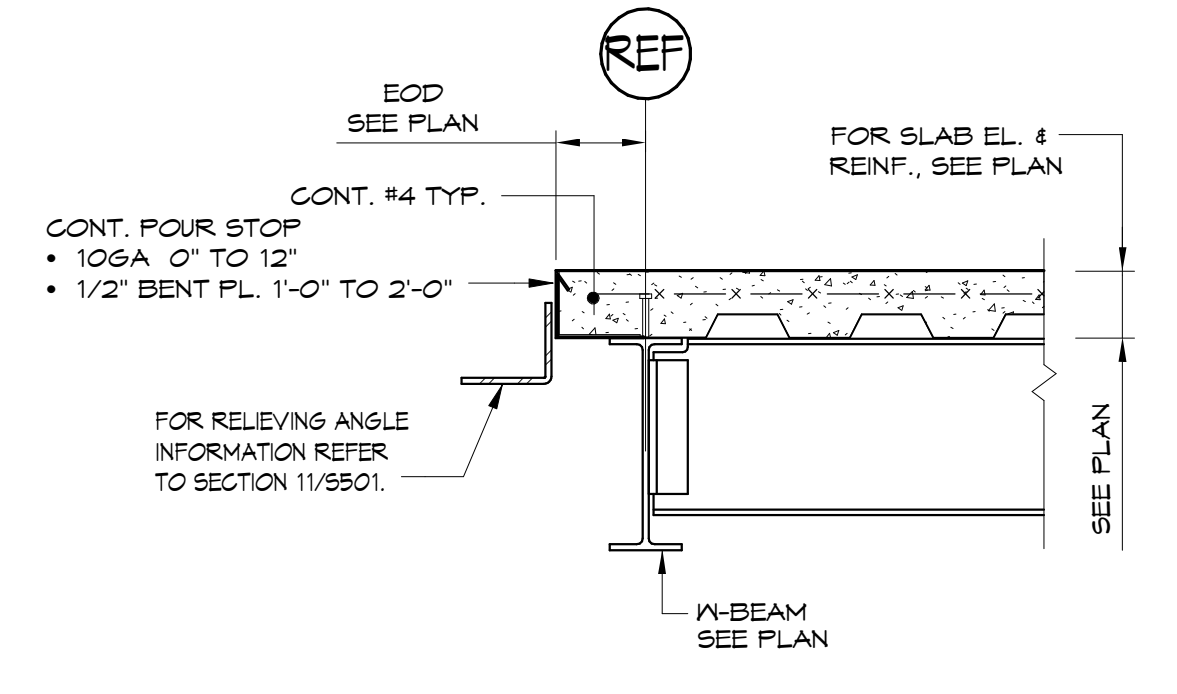
Revisions:  
 01/15/16 ISSUED FOR FDN. PERMIT  
 06/03/16 ISSUED FOR BUILDING PERMIT  
 06/14/16 ISSUED FOR CONSTRUCTION  
 07/17/16 ISSUED FOR ADDENDUM #1

Date: 01/15/16  
 Scale:  
**STEEL SECTIONS & DETAILS**

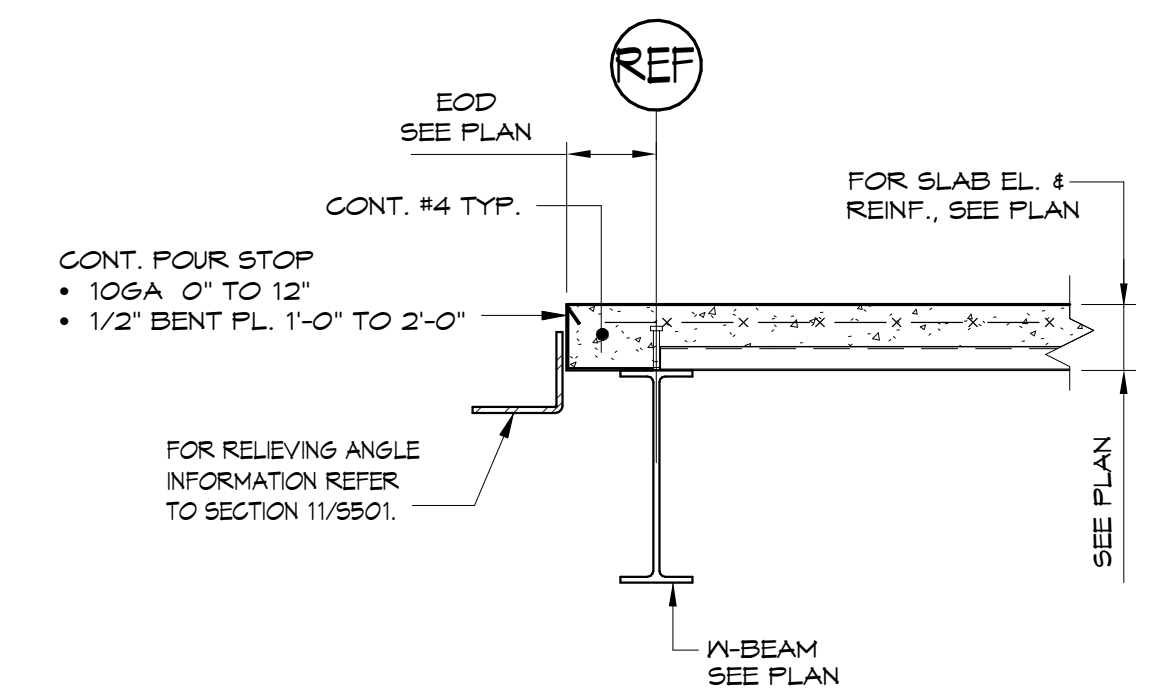
**S5.01**



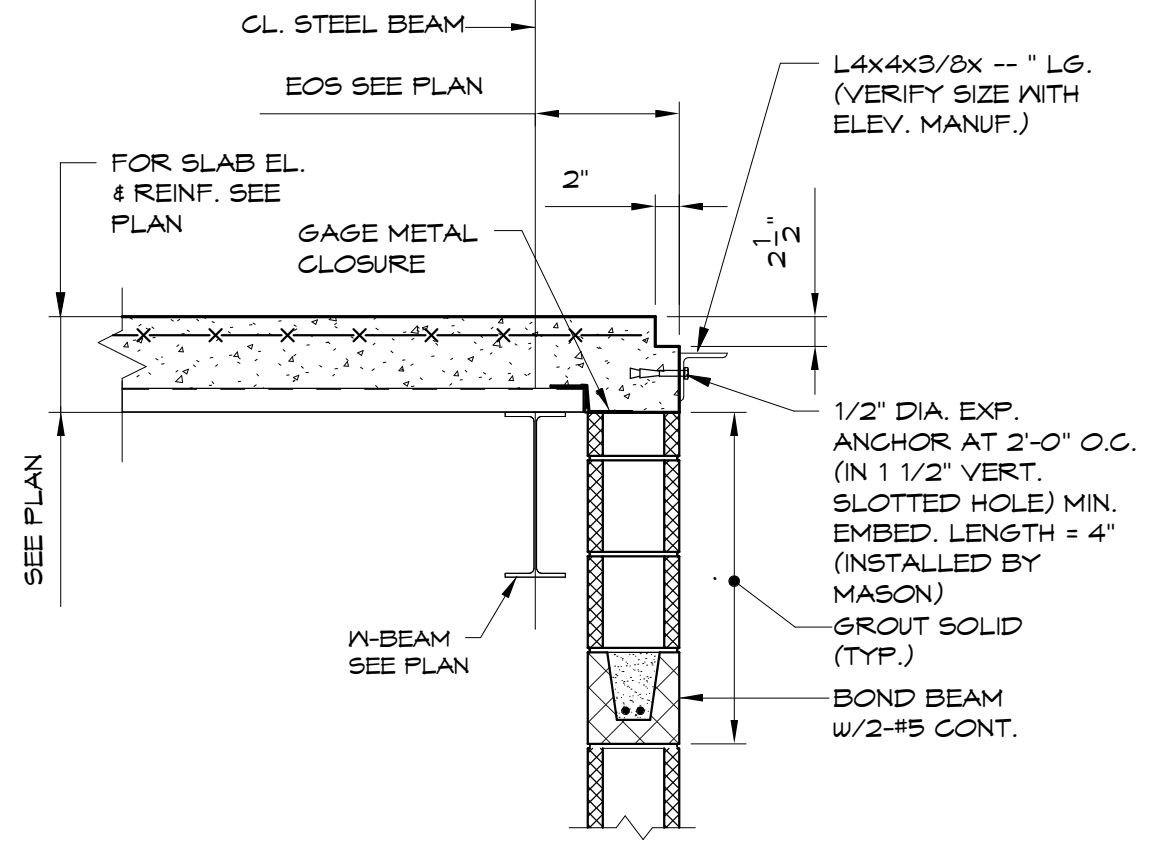
**1 ELEVATOR ROOF FRAMING PLAN**  
 1/4" = 1'-0"



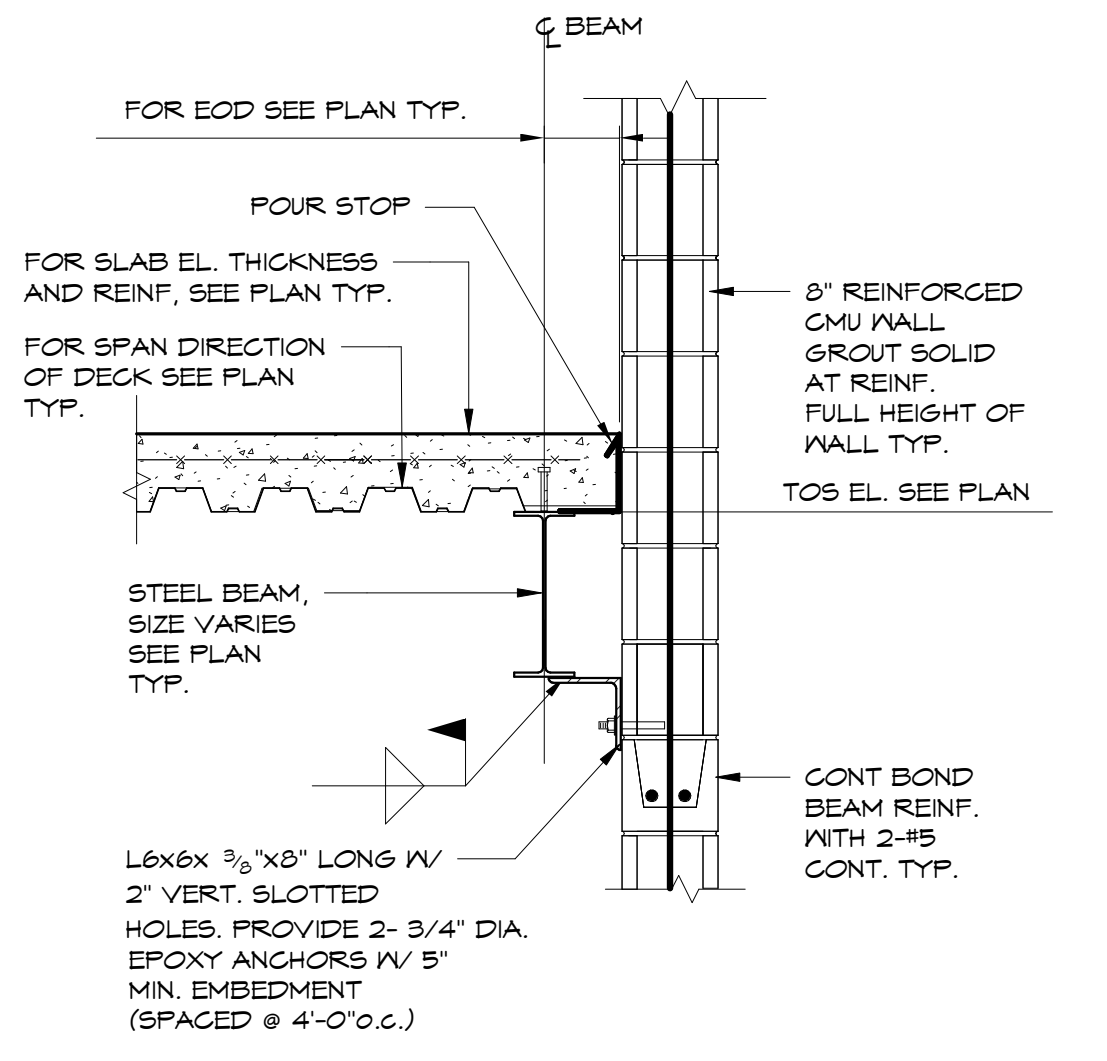
**TYPICAL CONCRETE FLOOR EDGE DETAIL (COMPOSITE DECK)**  
**2 SECTION**  
 3/4" = 1'-0"



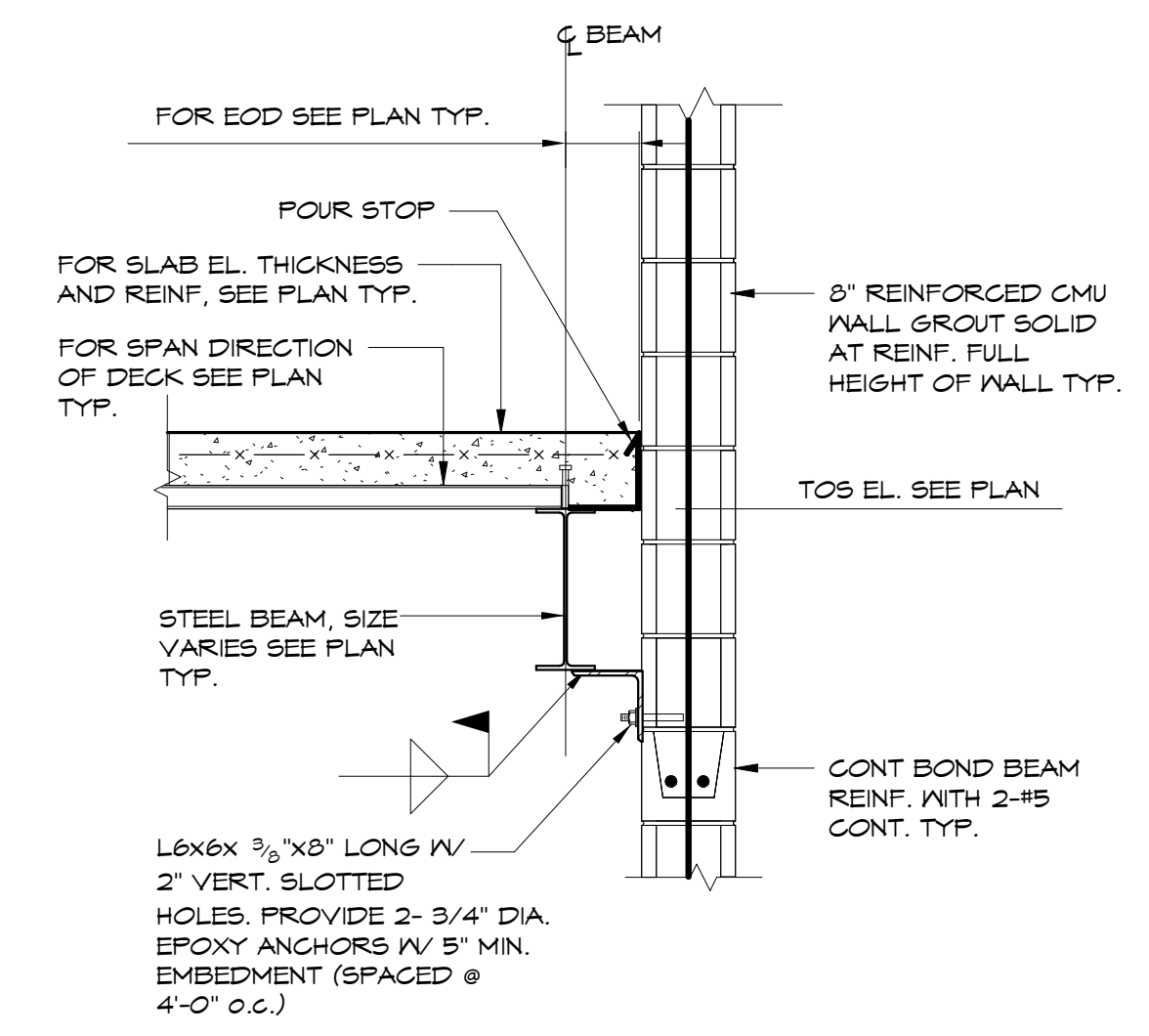
**TYPICAL CONCRETE FLOOR EDGE DETAIL (COMPOSITE DECK)**  
**3 SECTION**  
 3/4" = 1'-0"



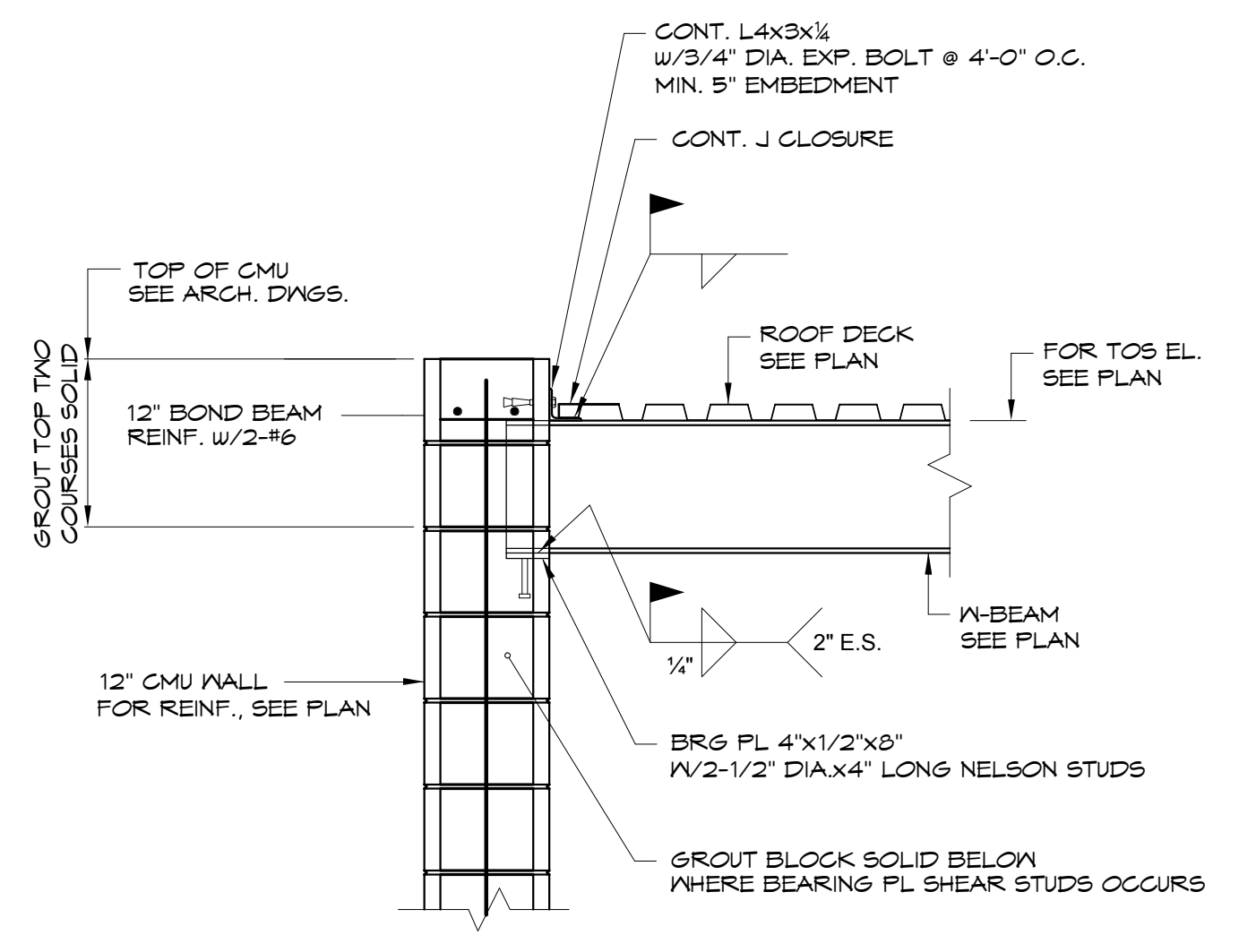
**4 SECTION AT ELEVATOR SILL**  
 3/4" = 1'-0"



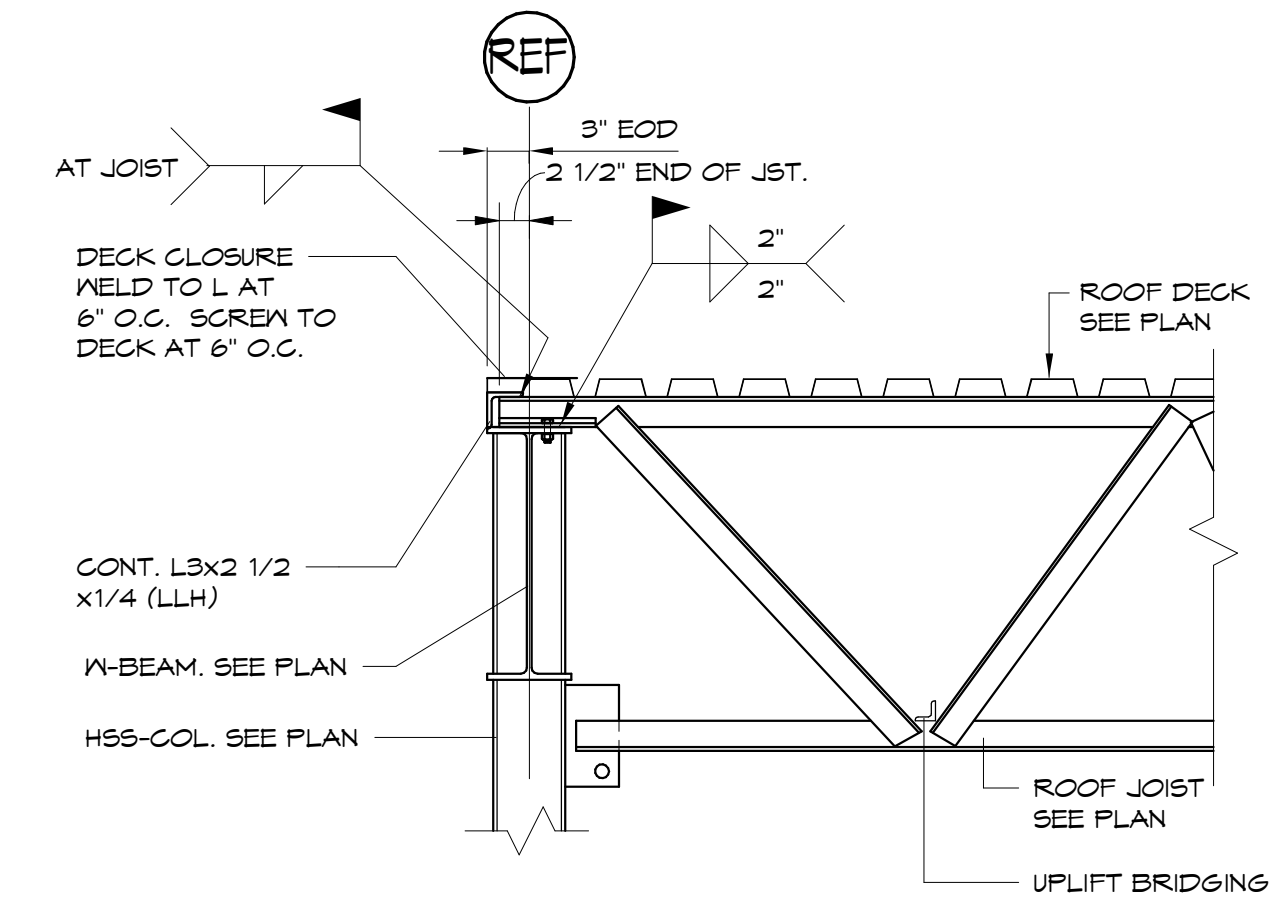
**5 SECTION**  
 3/4" = 1'-0"



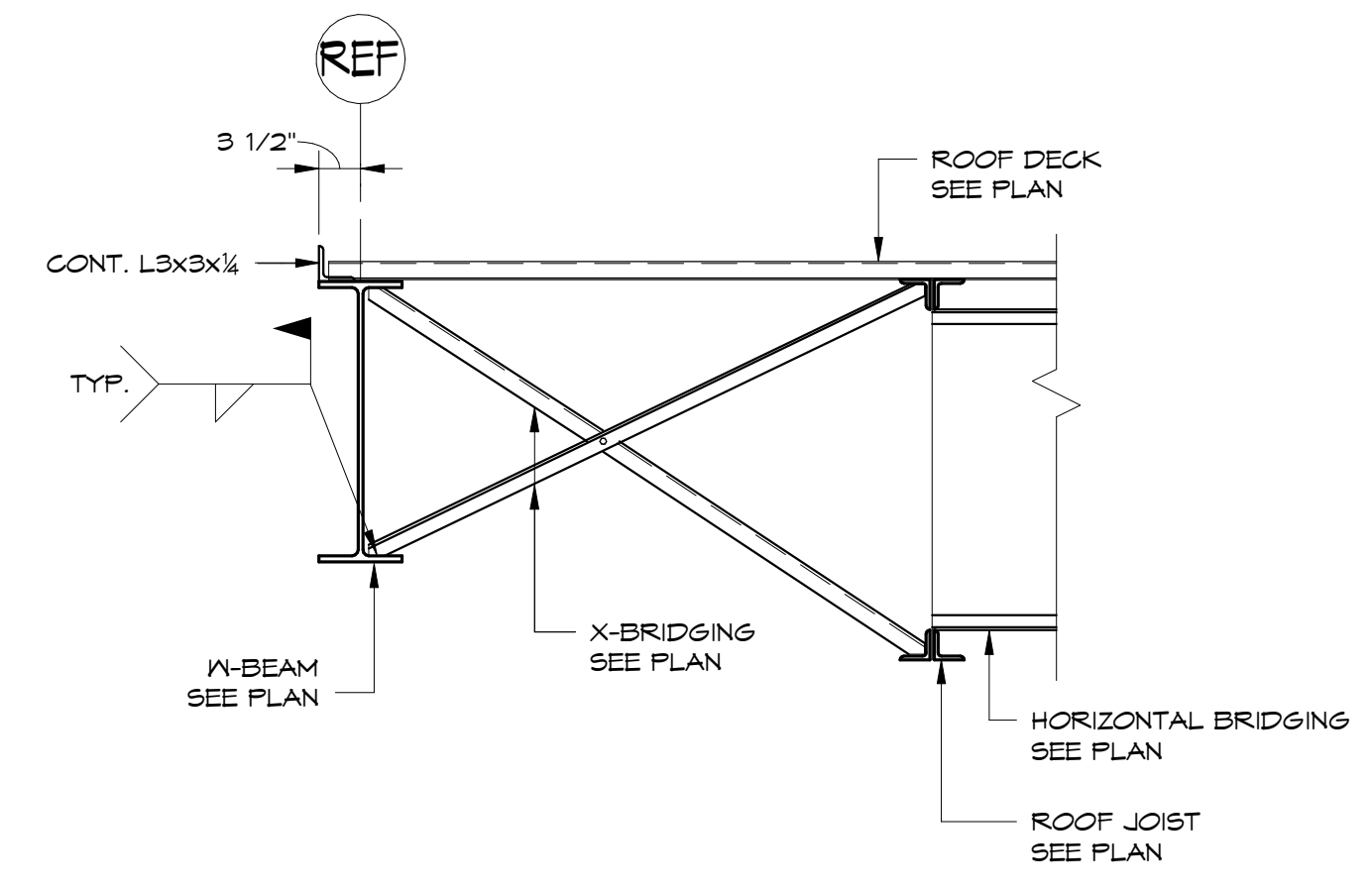
**6 SECTION**  
 3/4" = 1'-0"



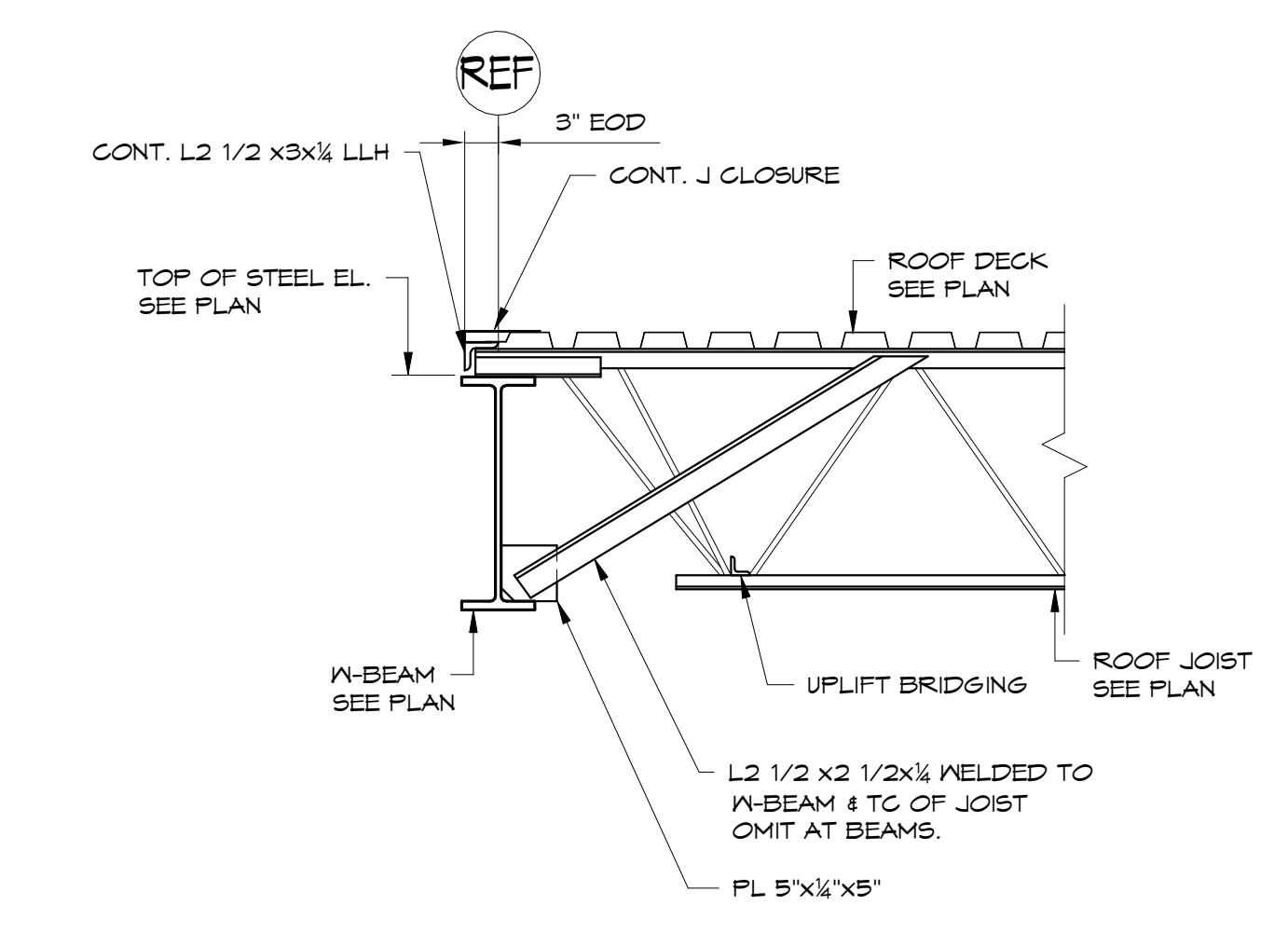
**7 SECTION**  
 3/4" = 1'-0"



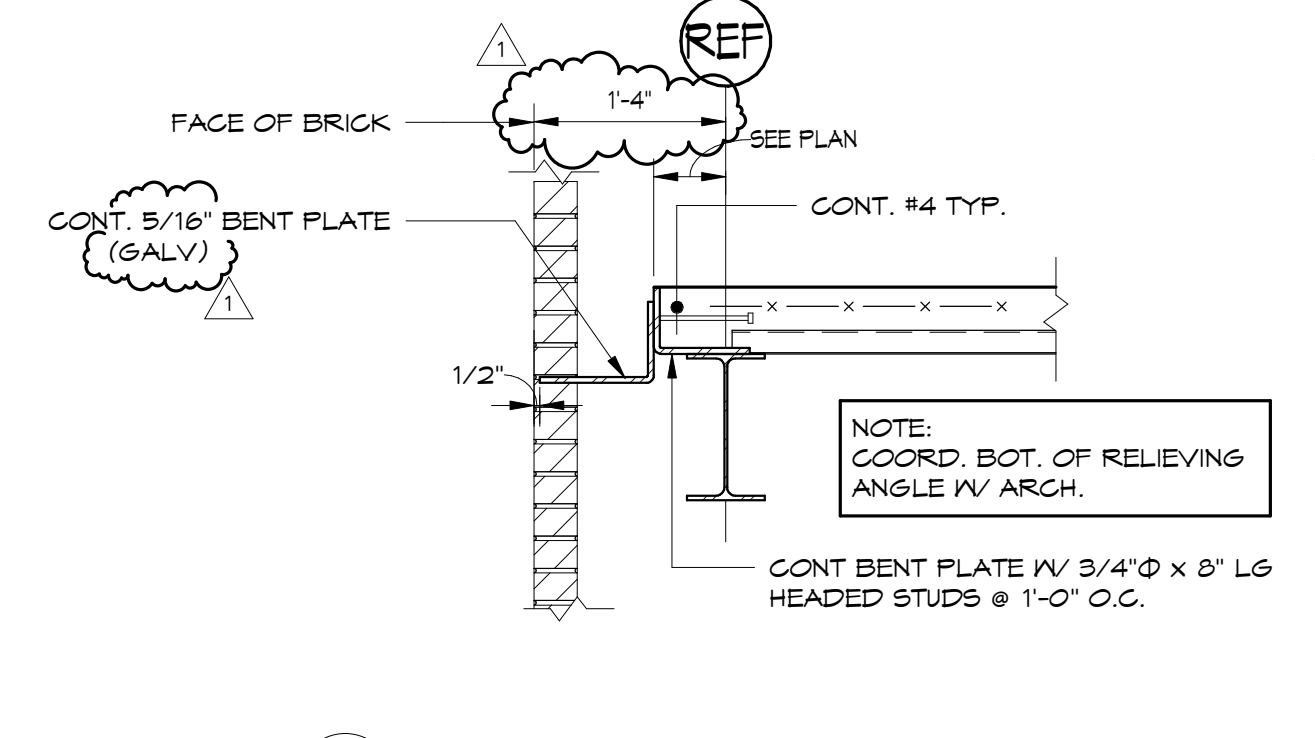
**8 SECTION**  
 3/4" = 1'-0"



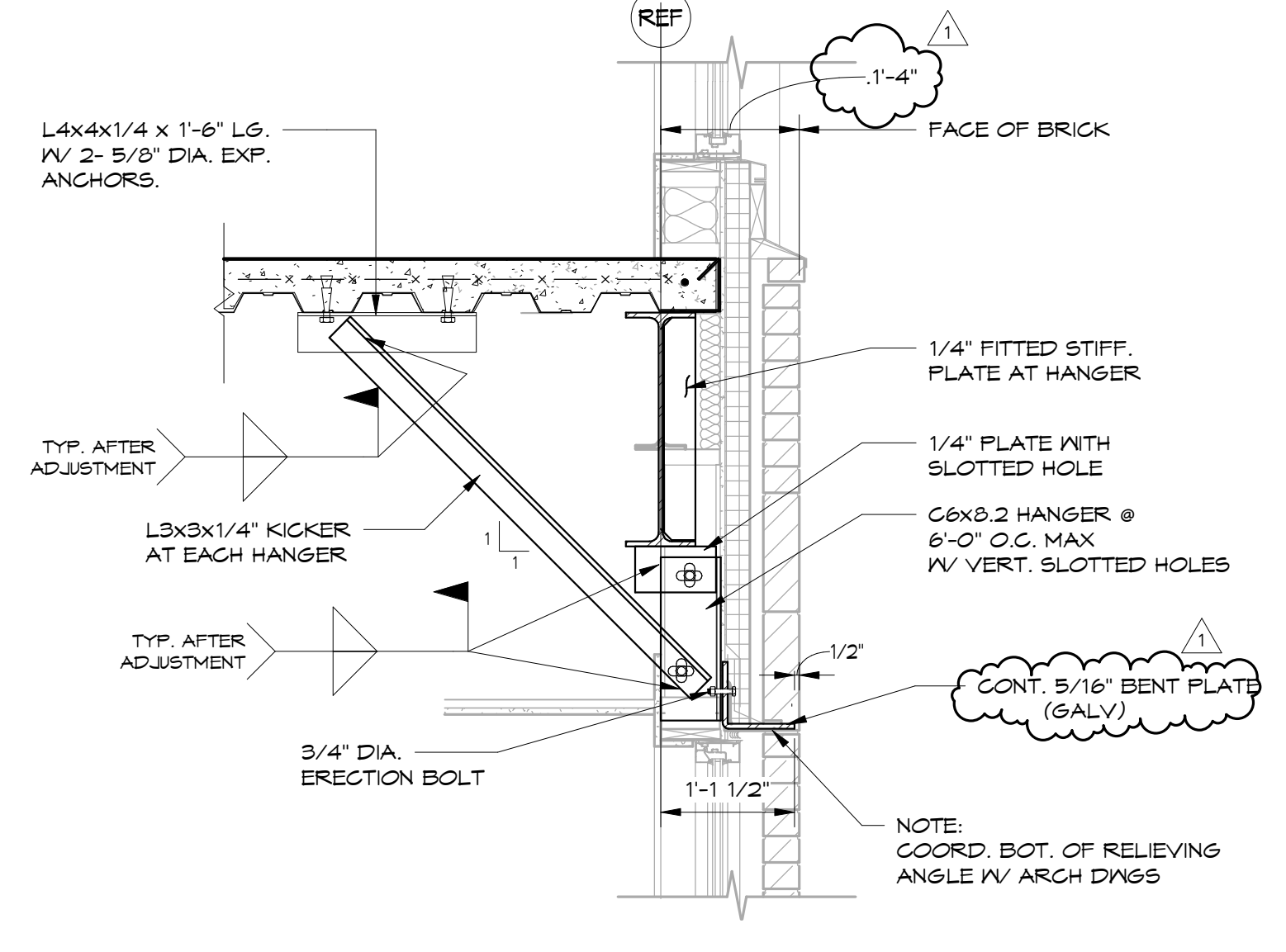
**9 SECTION**  
 3/4" = 1'-0"



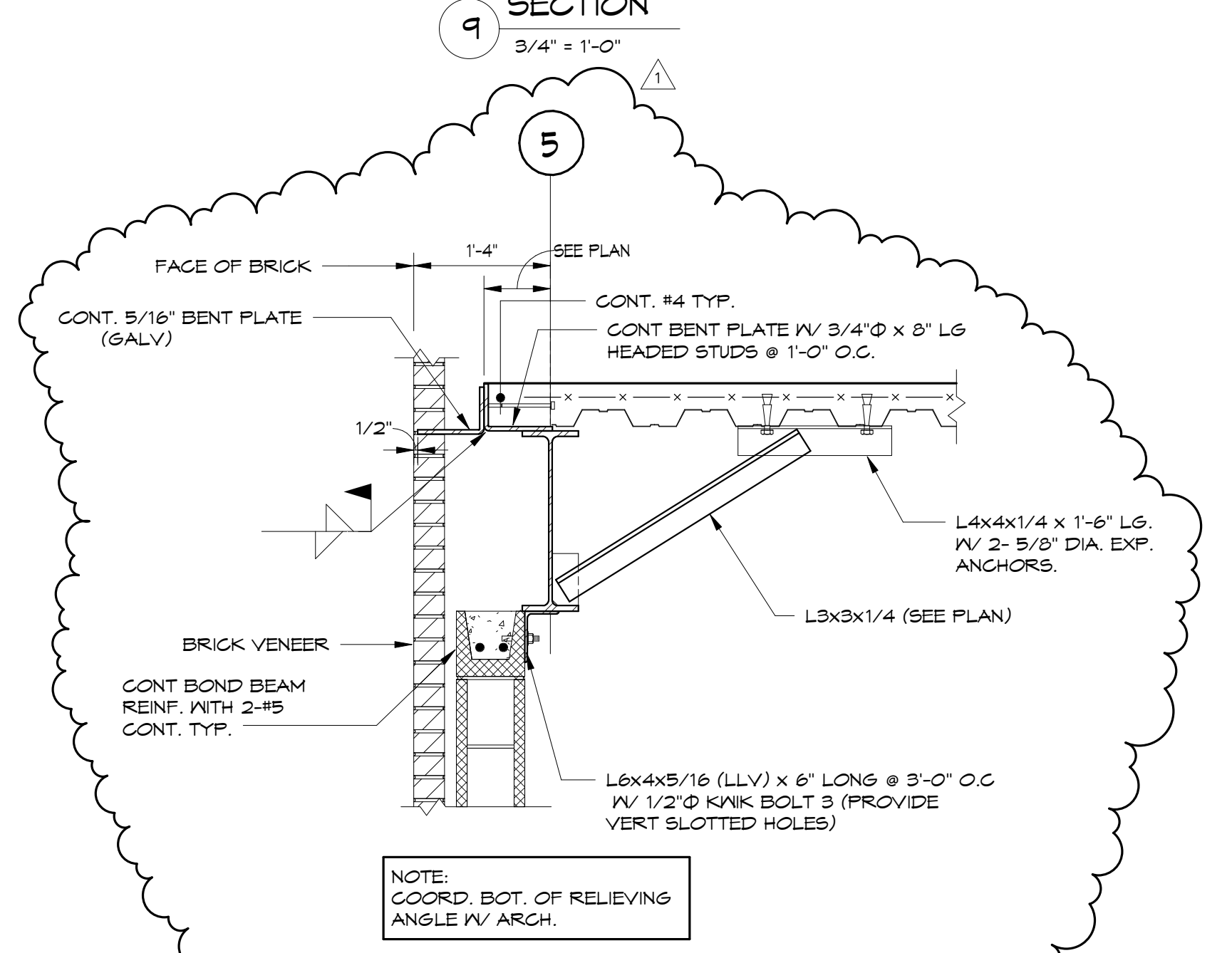
**10 SECTION**  
 3/4" = 1'-0"



**11 SECTION @ RELIEVING ANGLE**  
 3/4" = 1'-0"



**12 SECTION AT RELIEVING ANGLE**  
 3/4" = 1'-0"



**13 SECTION AT RELIEVING ANGLE**  
 3/4" = 1'-0"