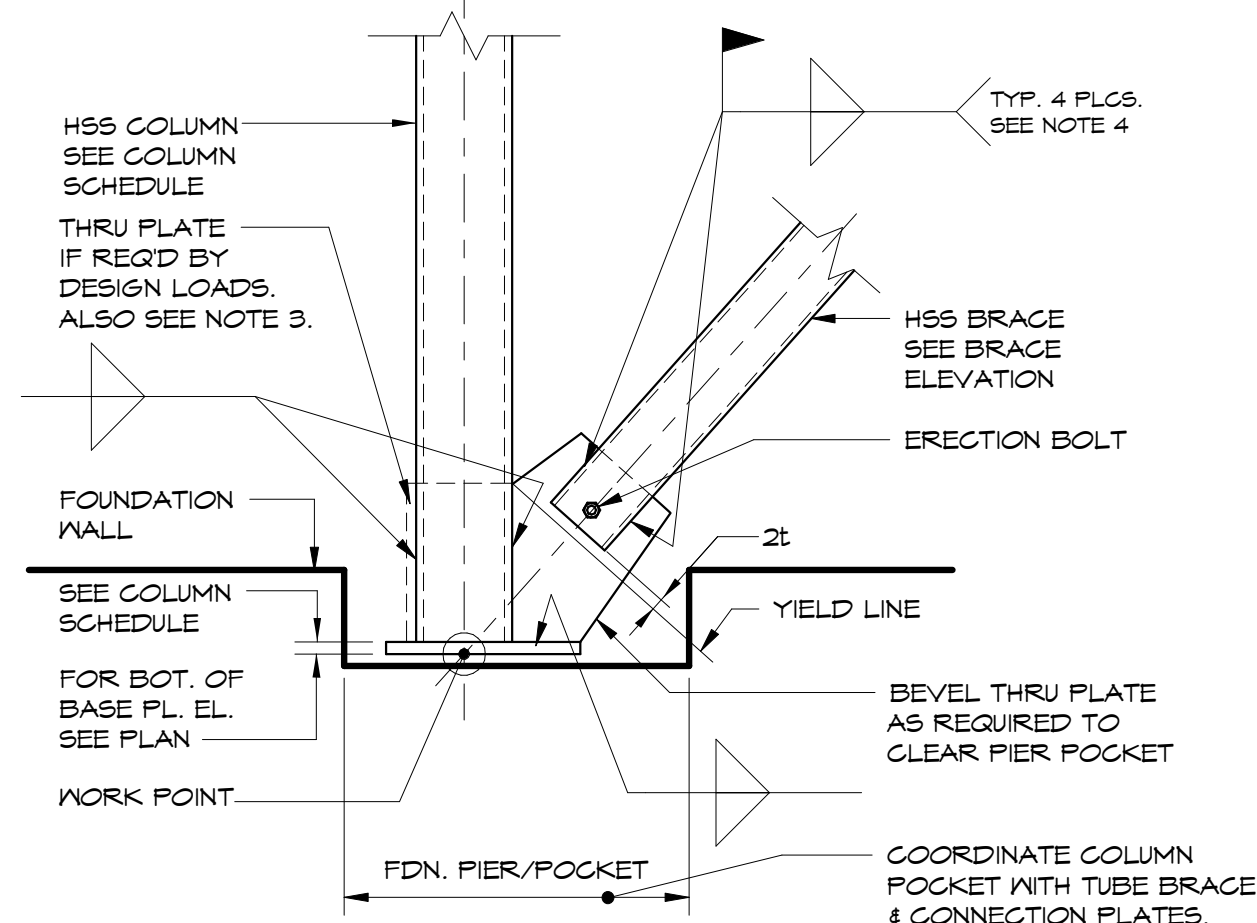


1 BRACE 'A' ALONG GRID LINE 'B'  
1/8" = 1'-0"

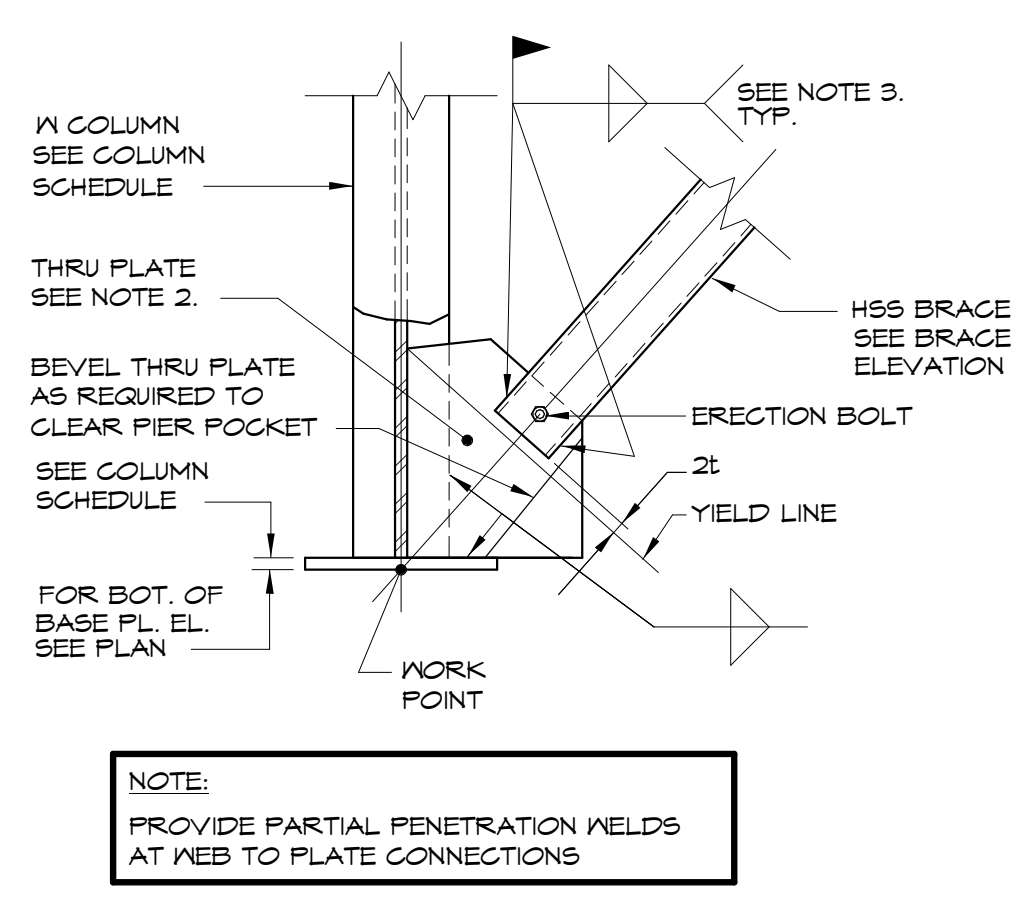
2 BRACE 'B' ALONG GRID LINE 'B.6'  
1/8" = 1'-0"

3 BRACE 'C' ALONG GRID LINE '5'  
1/8" = 1'-0"

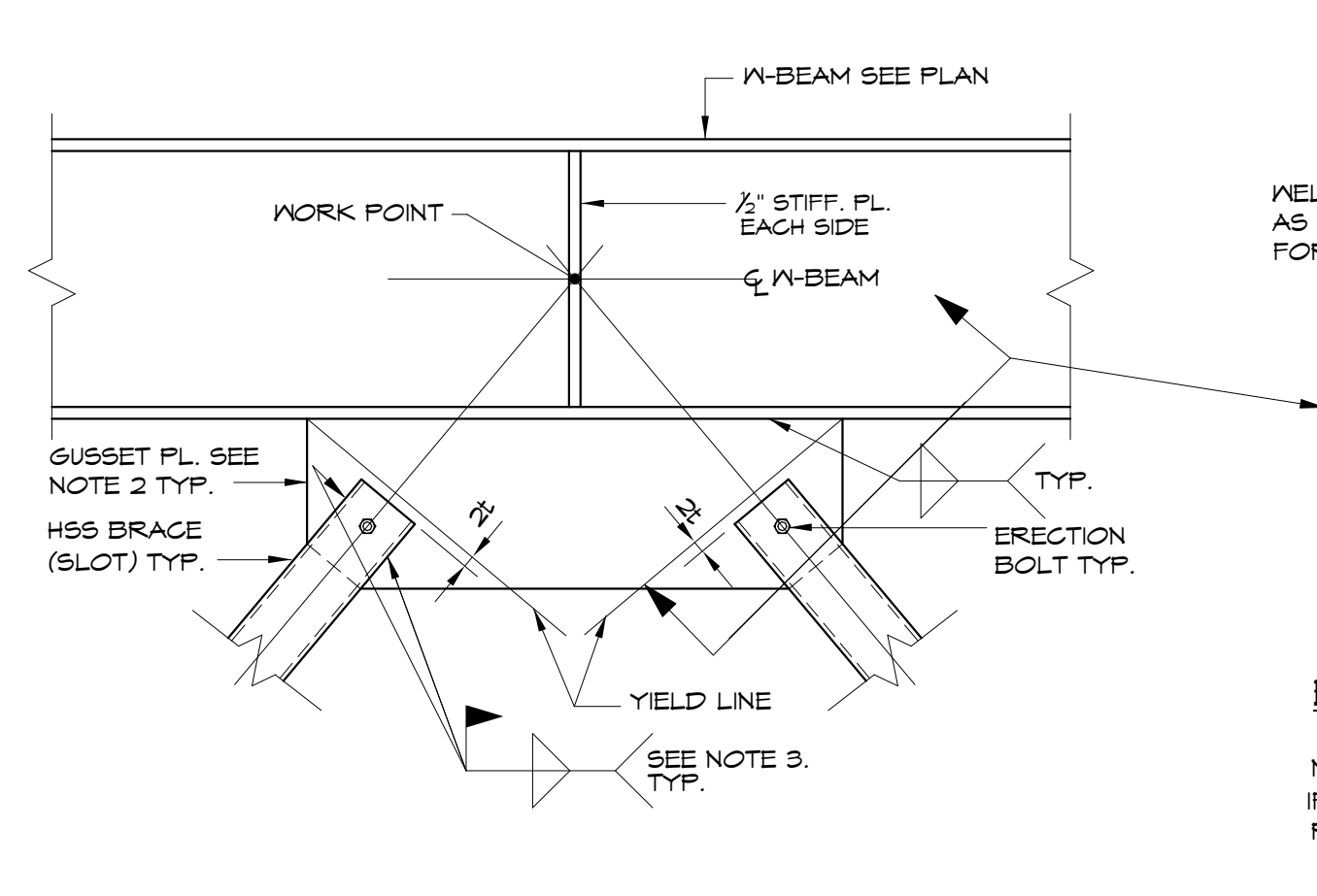
4 BRACE 'D' ALONG GRID LINE '2'  
1/8" = 1'-0"



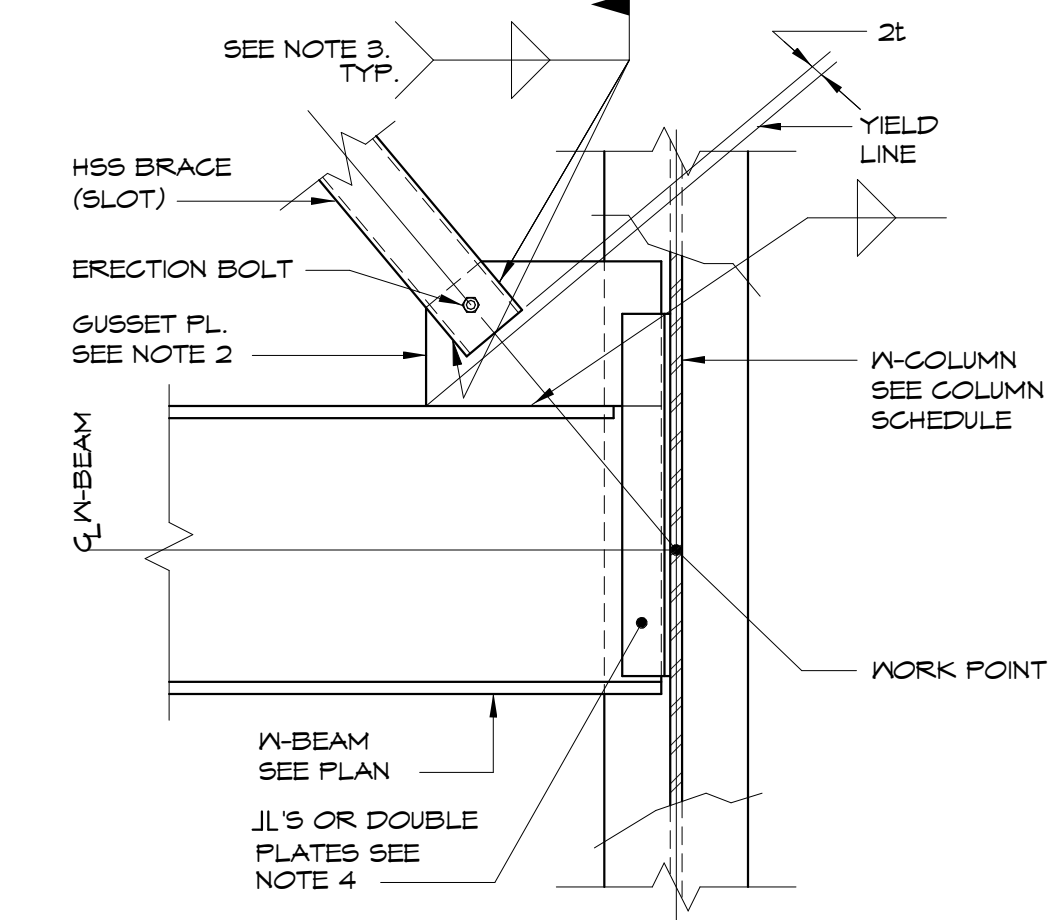
A  
3/4" = 1'-0"



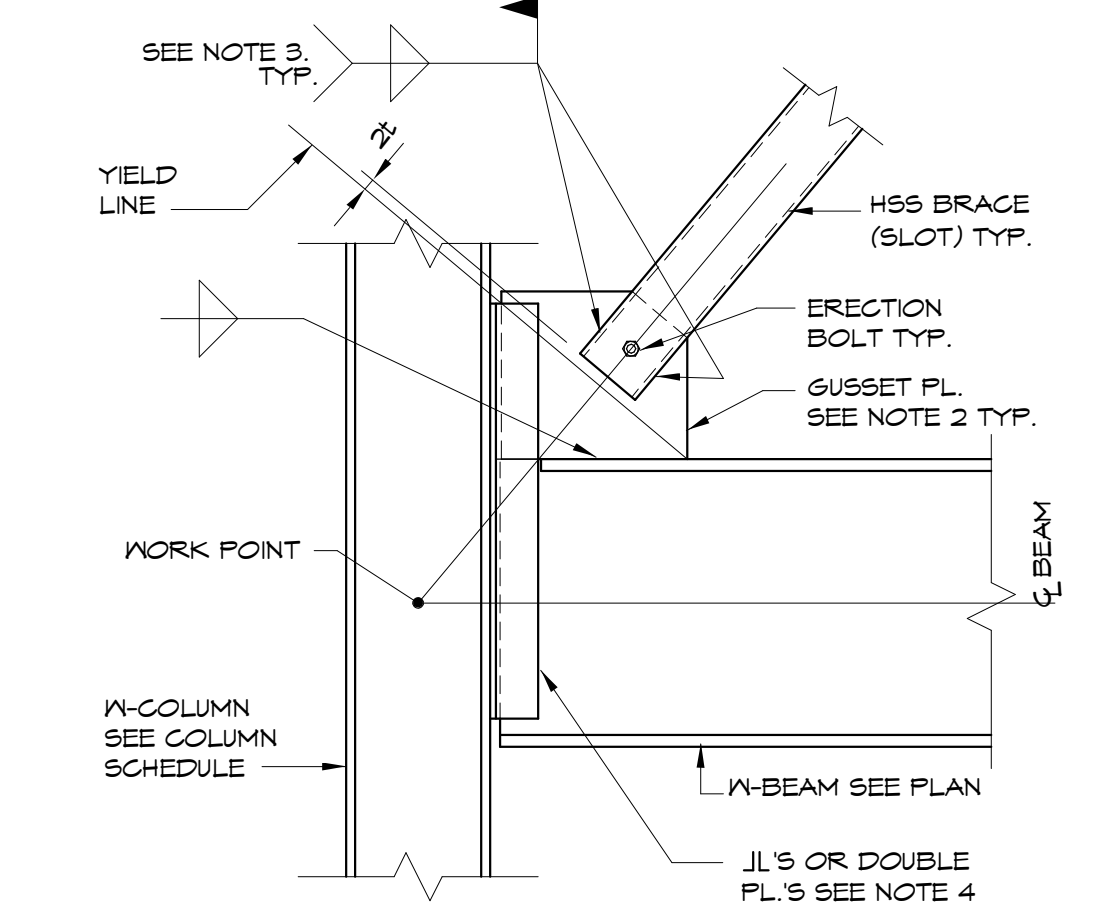
B  
3/4" = 1'-0"



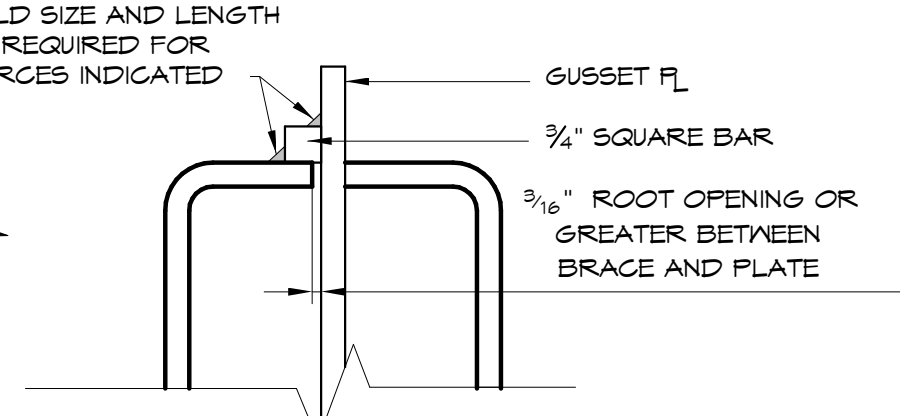
C  
3/4" = 1'-0"



D  
3/4" = 1'-0"



E  
3/4" = 1'-0"

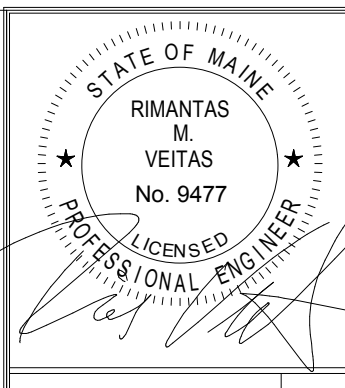


TYPICAL REPAIR OF GAP BETWEEN WELDING SURFACES

NOTE:  
IF ROOT OPENING IS 1/16" TO 3/16", INCREASE REQUIRED WELD SIZE BY THE OPENING SIZE.

NOTE  
(105K) ETC. INDICATES FACTORED (LRFD) AXIAL FORCE IN THE BRACE MEMBERS FOR THE USE IN CONNECTION DESIGN. TO CHANGE LRFD LOAD TO ASD DIVIDE LRFD BY 1.5 (LRFD/1.5=ASD)

- BRACE DETAIL NOTES:
1. FOR NUMBER, SIZE AND LENGTHS OF ANCHOR BOLTS SEE BASE PLATE DETAILS
  2. ALL BRACE GUSSET PLATES TO BE 1/2" THICK MIN.
  3. DETAILER TO PROVIDE SIZE AND LENGTH OF FIELD FILLET WELDS OF HSS BRACE TO PLATES ON THE ERECTION DRAWINGS.
  4. SHEAR CAPACITY OF CONNECTION TO BE BRACING LOAD PLUS BEAM SHEAR INDICATED ON PLANS.
  5. DETAILER TO REVIEW INSTALLATION OF BRACE MEMBER. SUBMIT DIAGRAM INDICATING HOW BRACE WILL FIT.



Prepared For:  
**BATEMAN PARTNERS, LLC**  
P.O. BOX 7486  
Portland, ME 04112

Consulting Engineer:  
**VEITAS VEITAS** engineers  
68 Grand Street, Suite 101  
Branford, Massachusetts 02814  
TEL: (508) 843-2800 FAX: (508) 846-2000

Architect:  
**ARCHETYPE architects**  
48 Union Wharf Portland, Maine 04101  
(207) 772-6022 Fax (207) 772-4056

Project:  
**16 MIDDLE STREET**  
MIDDLE STREET  
PORTLAND, MAINE

Revisions:  
01/15/16 ISSUED FOR FDN PERMIT  
06/03/16 ISSUED FOR BUILDING PERMIT  
06/04/16 ISSUED FOR CONSTRUCTION  
07/11/16 ISSUED FOR ADDENDUM #1

Date: 01/15/16  
**BRACE FRAMING & ELEVATIONS & DETAILS**

S3.02