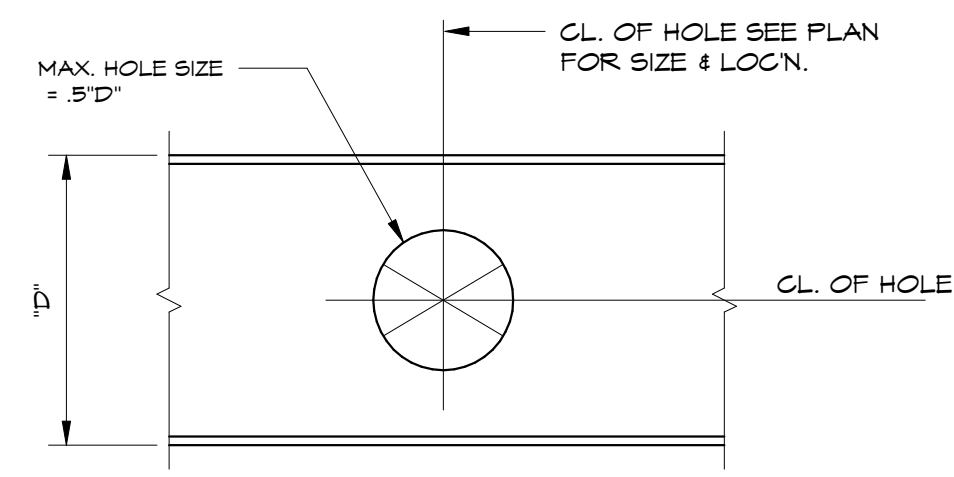
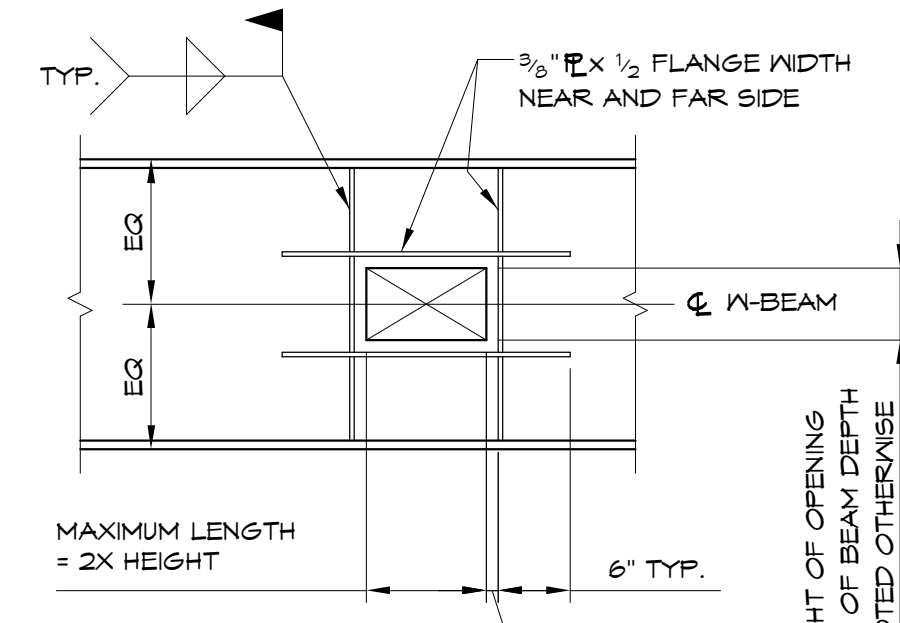


1 BRIDGING DETAIL AT STEEL JOIST  
3/4" = 1'-0"



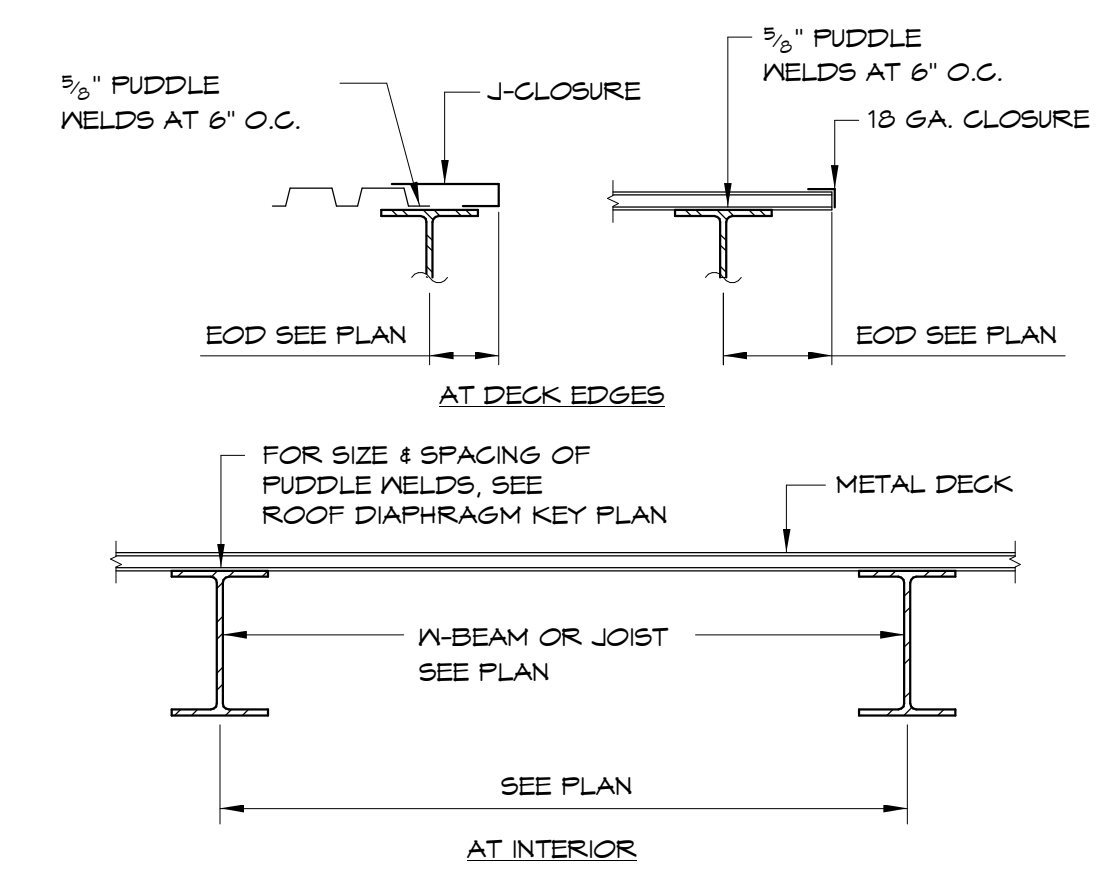
NOTE:  
1. APPLIES ONLY TO OPENINGS IN THE MIDDLE THIRD OF BEAM DEPTH ("D").  
2. OPENINGS CANNOT BE MADE WITHIN 2'X'D" OR 10% OF SPAN FROM ENDS OF BEAM.

2 HOLE THRU BEAM WEB DETAIL  
3/4" = 1'-0"

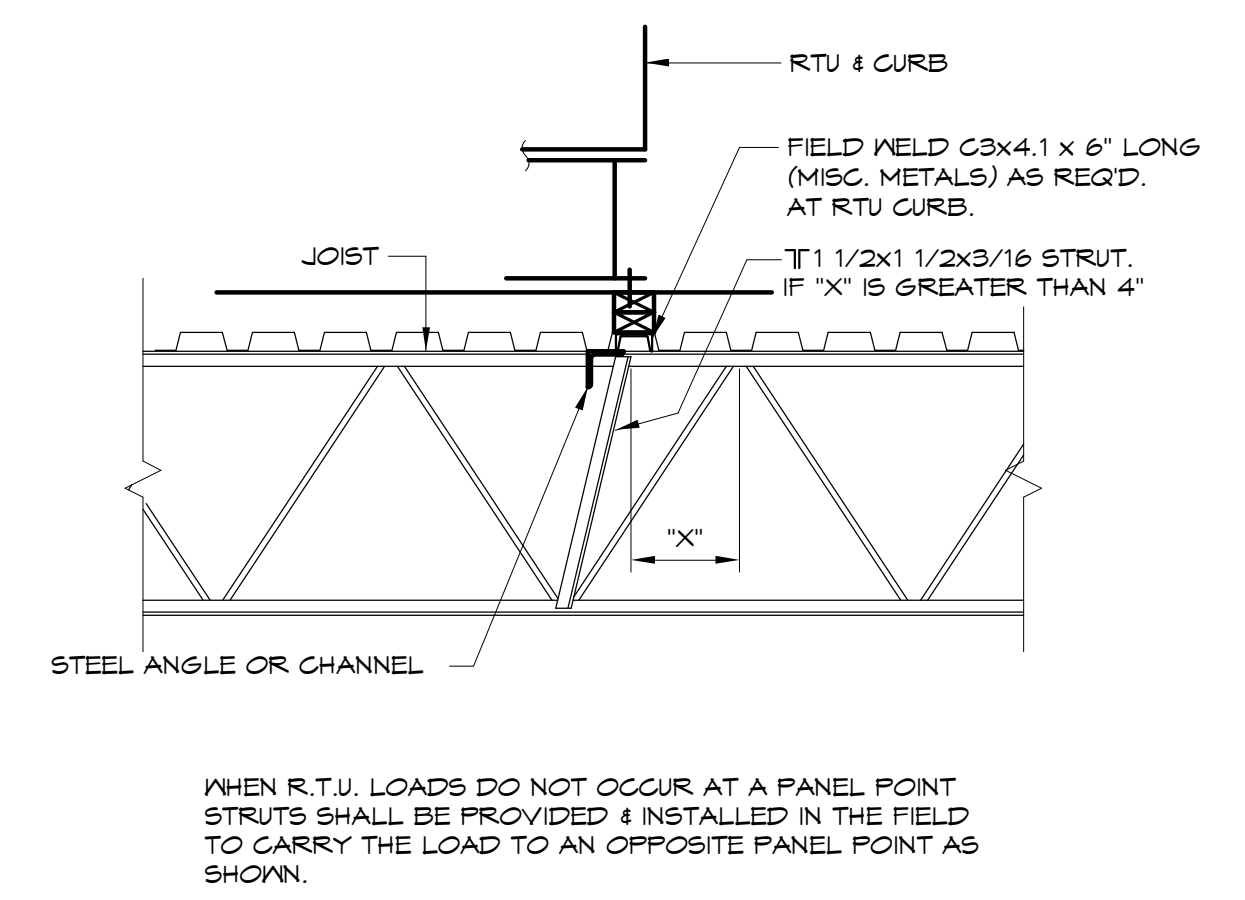


NOTES:  
1. APPLIES ONLY TO OPENINGS IN THE MIDDLE THIRD OF BEAM SPAN.  
2. OPENINGS CANNOT BE MADE AT ENDS OF BEAMS WITHOUT THE APPROVAL OF THE ENGINEER.

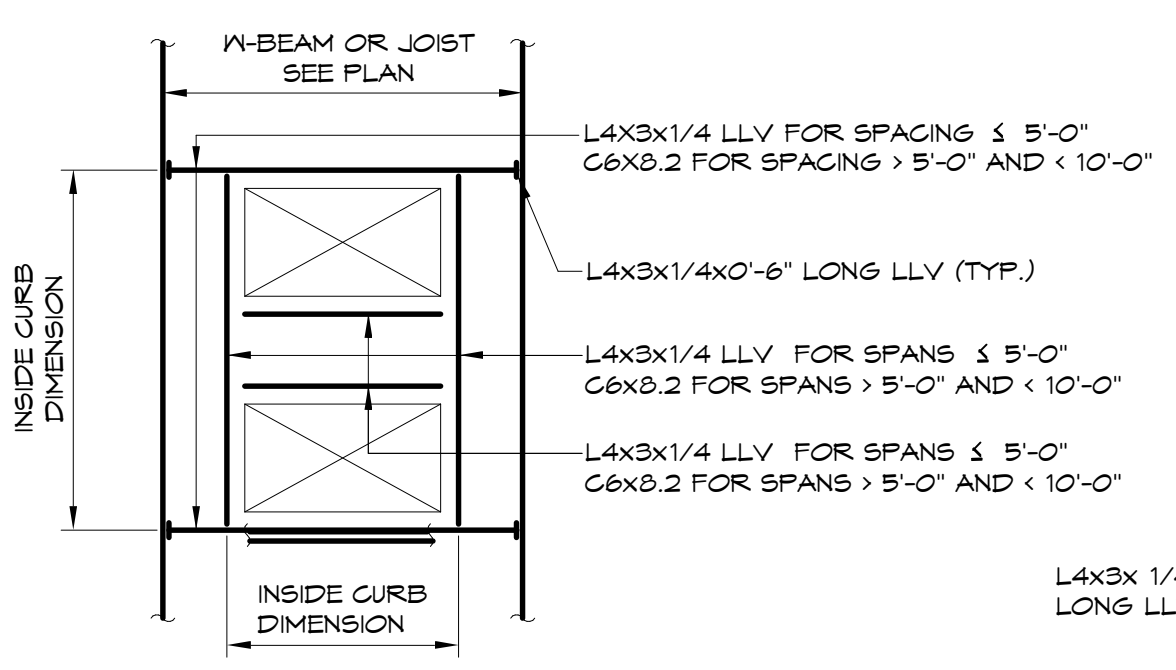
3 BEAM WEB OPENING REINFORCING DETAIL  
3/4" = 1'-0"



4 ROOF CONSTRUCTION  
3/4" = 1'-0"

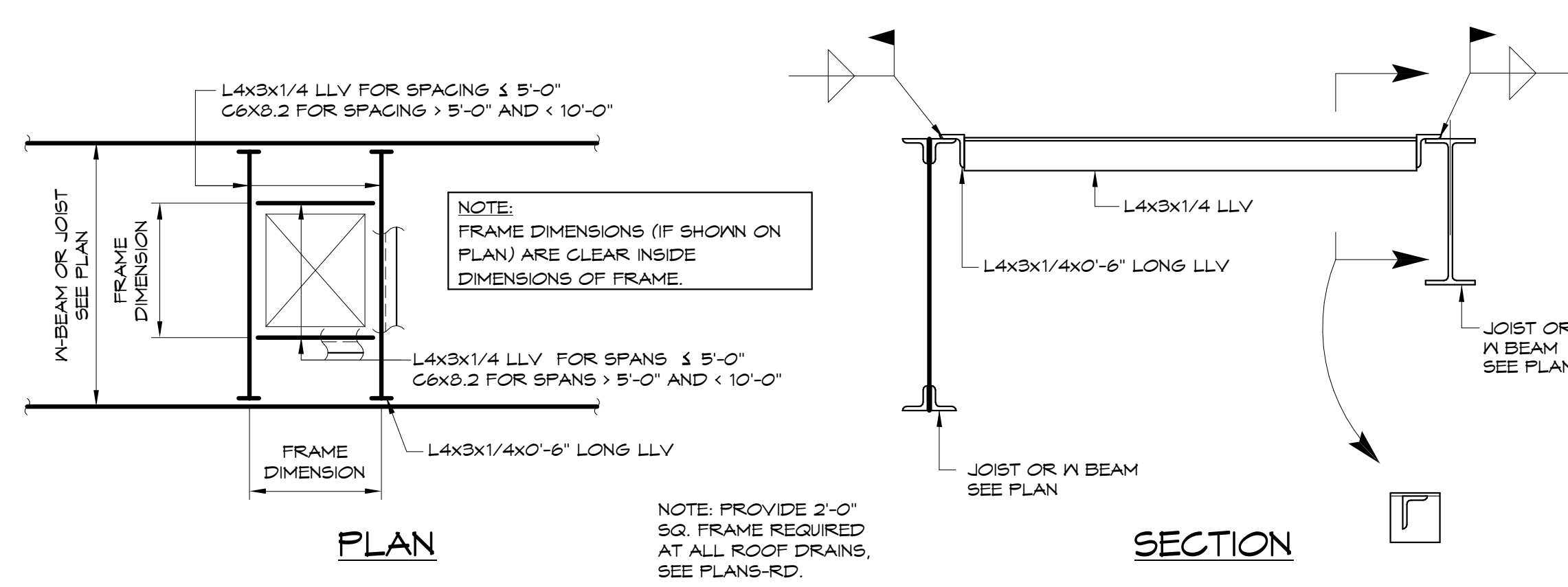


5 TYPICAL JOIST DETAIL UNDER RTU  
3/4" = 1'-0"



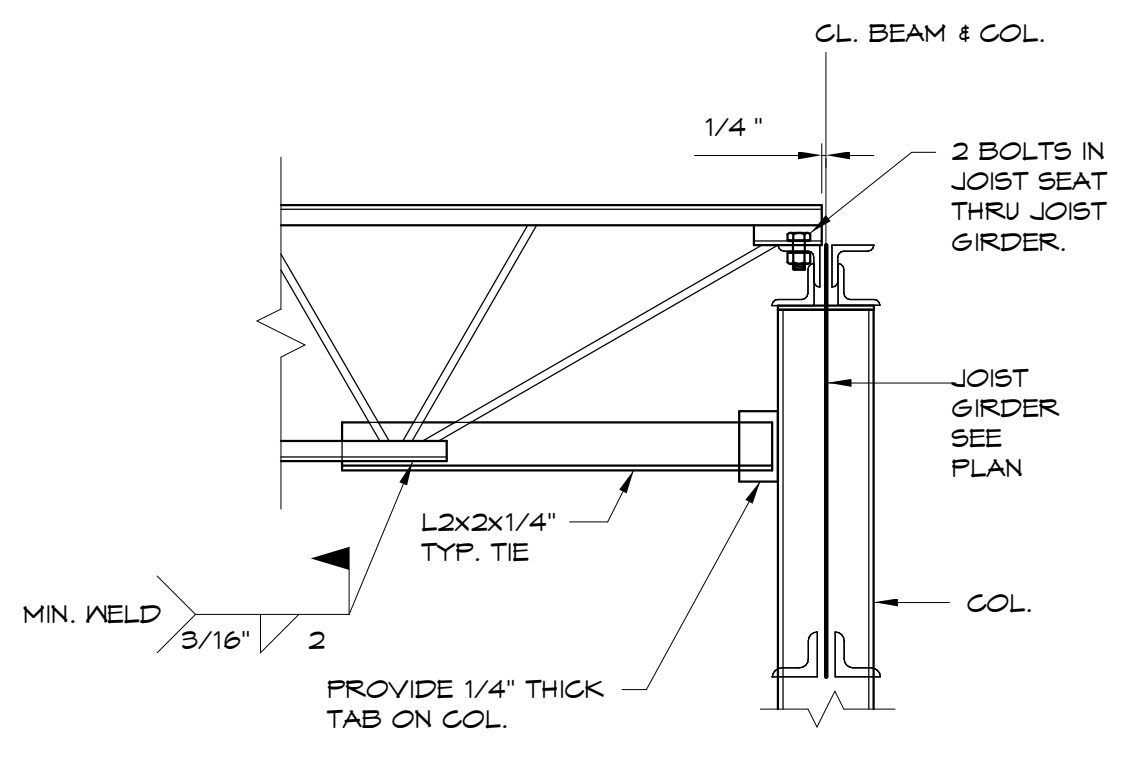
NOTES:  
1. FINAL OVERALL FRAME SIZE TO BE COORDINATED BY THE MECH. CONTRACTOR & THE G.C.

6 ROOF TOP UNIT FRAME DETAIL  
3/8" = 1'-0"

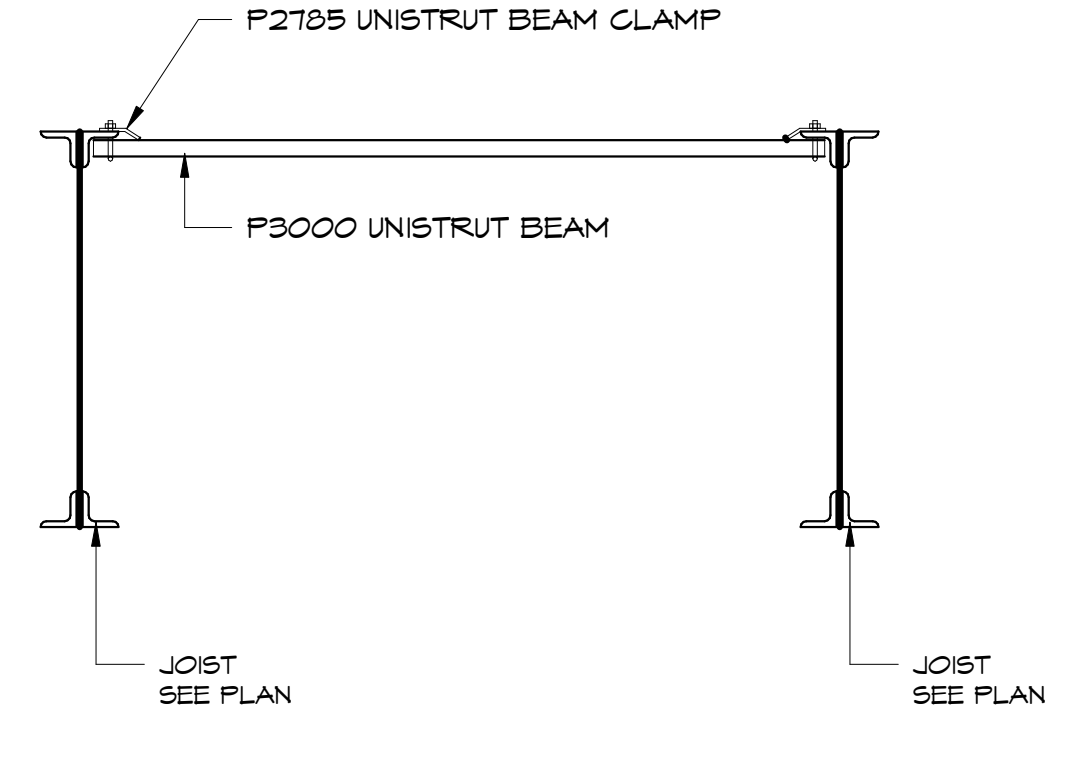


NOTE: PROVIDE 2'-0" SQ. FRAME REQUIRED AT ALL ROOF DRAINS, SEE PLANS-RD.

7 TYPICAL ROOF DRAIN & FAN OPENING FRAMING DETAIL  
3/4" = 1'-0"



8 TYPICAL TIE JOIST DETAIL  
3/4" = 1'-0"



9 TYPICAL UTILITY HANGER SUPPORT  
3/4" = 1'-0"

STATE OF MAINE  
RIMANTAS M. VEITAS  
No. 9477  
LICENSED PROFESSIONAL ENGINEER

Prepared For:  
**BATEMAN PARTNERS, LLC**  
P.O. BOX 7486  
Portland, ME 04112

Consulting Engineer:  
**VEITAS & VEITAS** engineers  
68 Granite Street, Suite 101  
Business, Scarborough, ME 04107  
Tel: (207) 266-7486 Fax: (207) 266-2005

Architect:  
**ARCHETYPE** architects  
48 Union Wharf Portland, Maine 04101  
(207) 772-6022 Fax (207) 772-4056

Project:  
**16 MIDDLE STREET**  
MIDDLE STREET  
PORTLAND, MAINE

Revisions:  
01/15/16 ISSUED FOR FDN. PERMIT  
06/03/16 ISSUED FOR BUILDING PERMIT  
06/14/16 ISSUED FOR CONSTRUCTION  
07/17/16 ISSUED FOR ADDENDUM #1

Date: 01/15/16  
Scale:  
**TYPICAL DETAILS**

**S2.06**