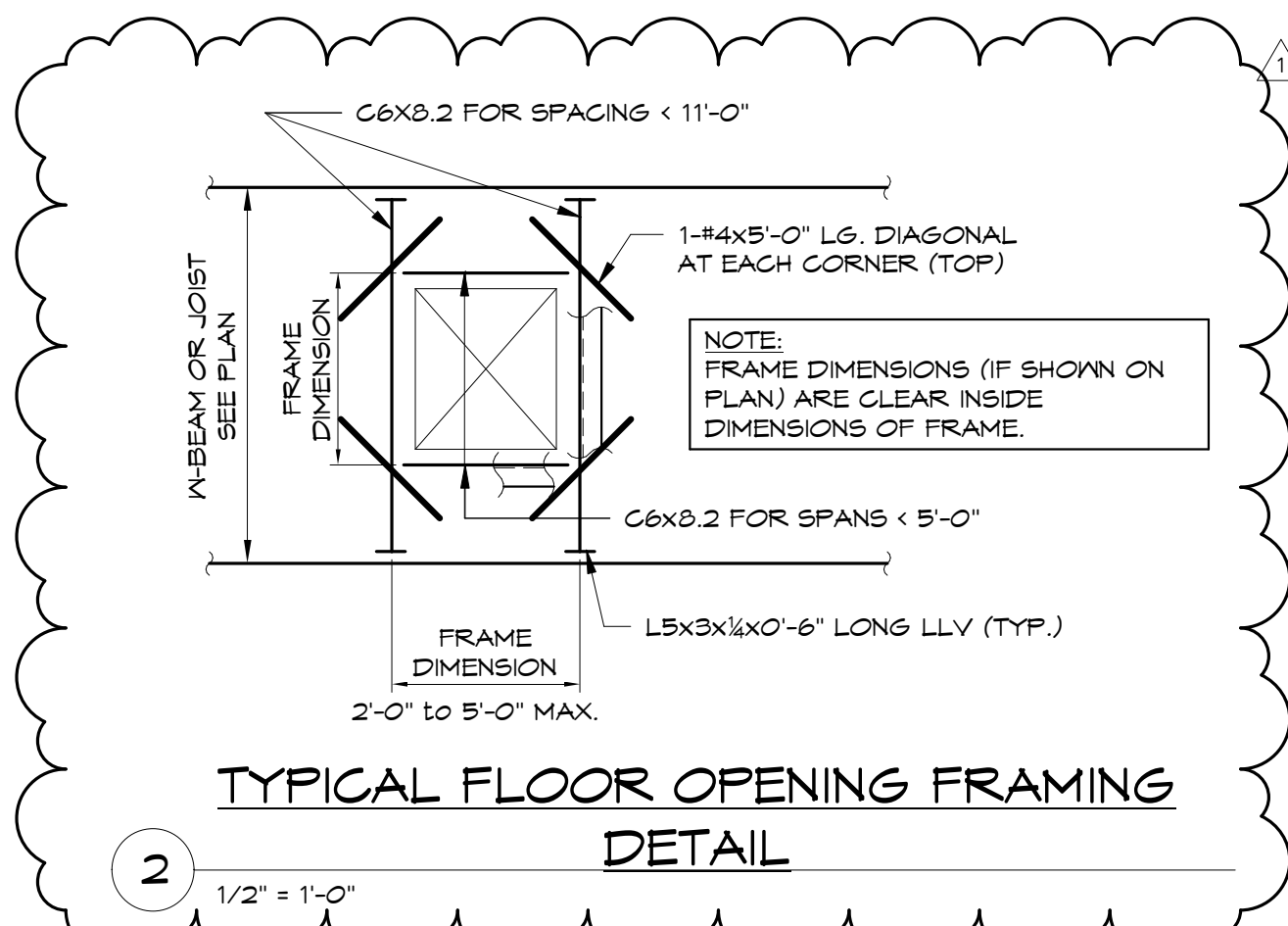
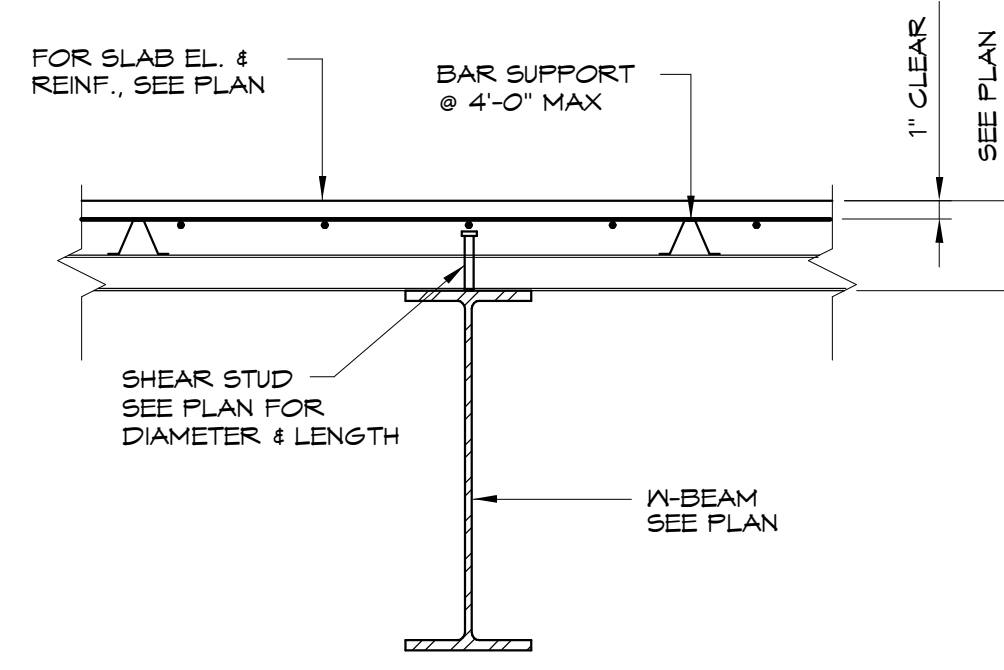


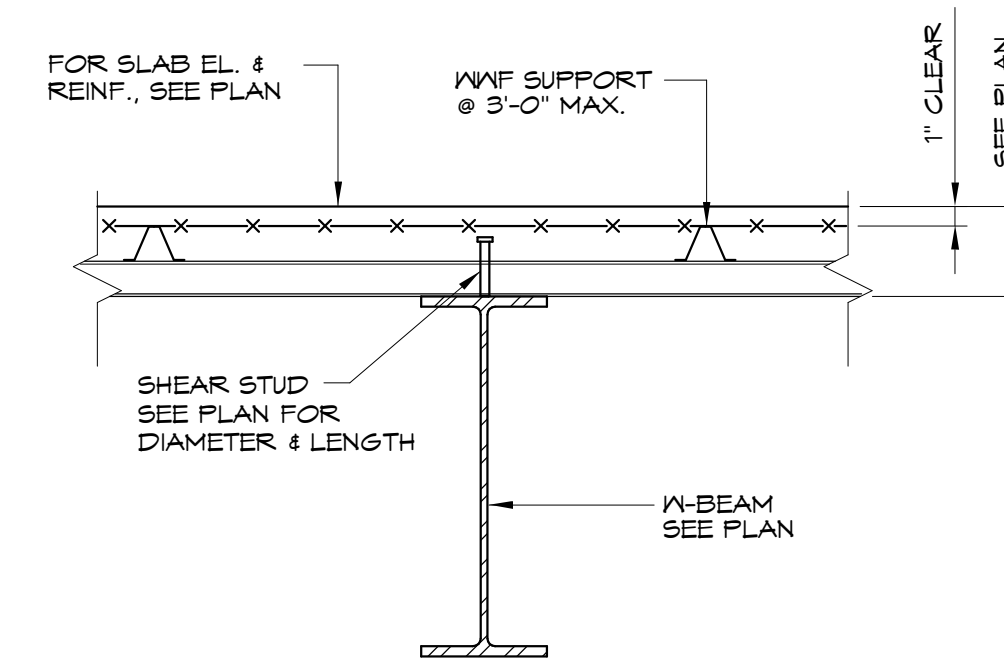
1 TYP. FRAMED OPNG. AT CONCRETE ON METAL DECK
3/4" = 1'-0"



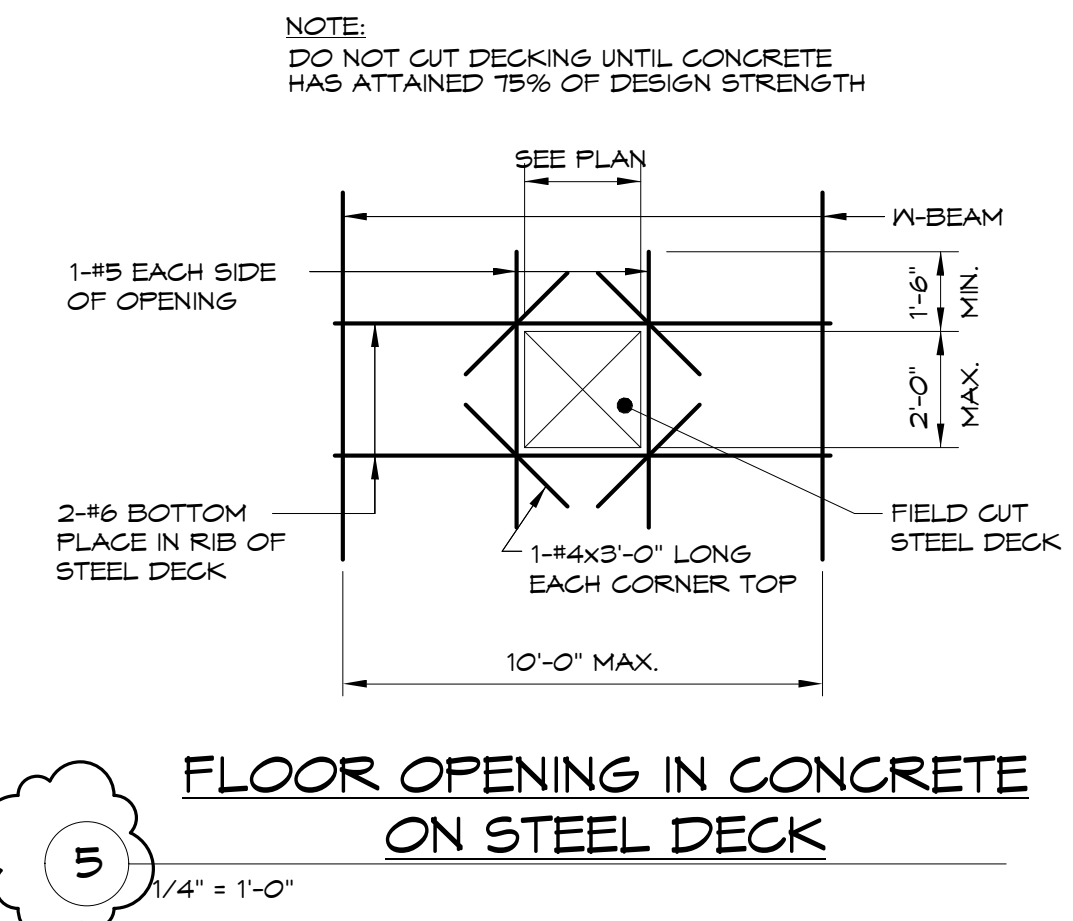
2 TYPICAL FLOOR OPENING FRAMING DETAIL
1/2" = 1'-0"



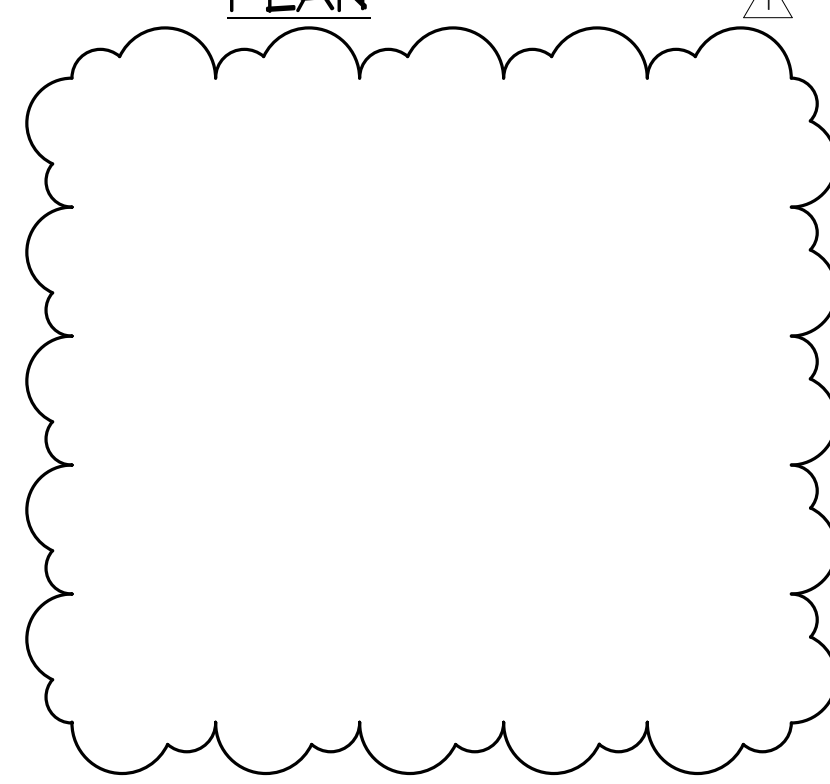
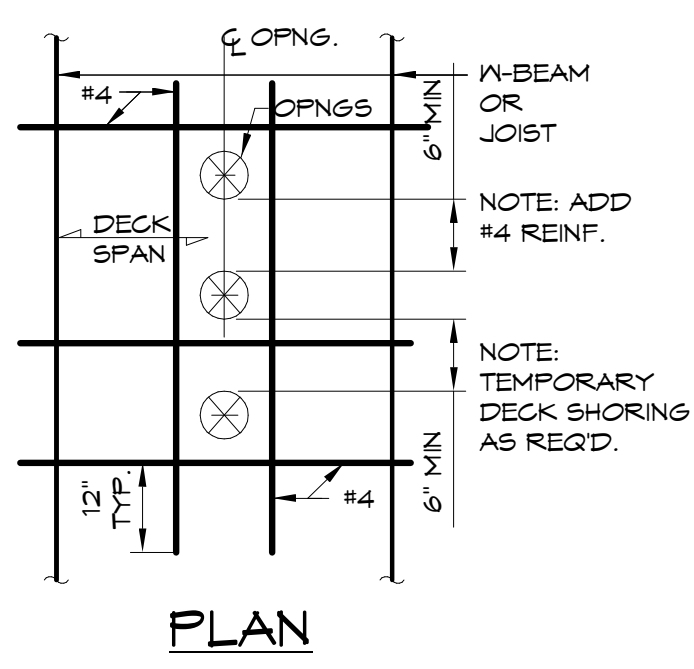
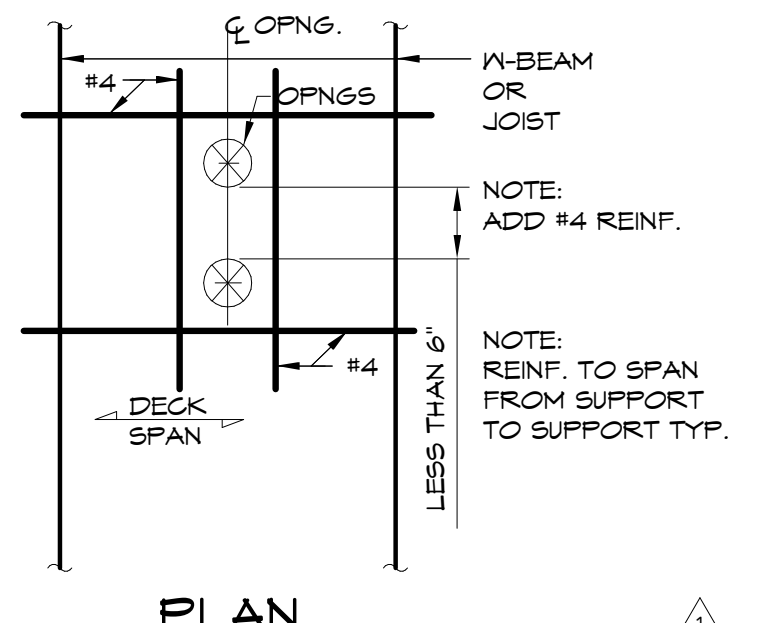
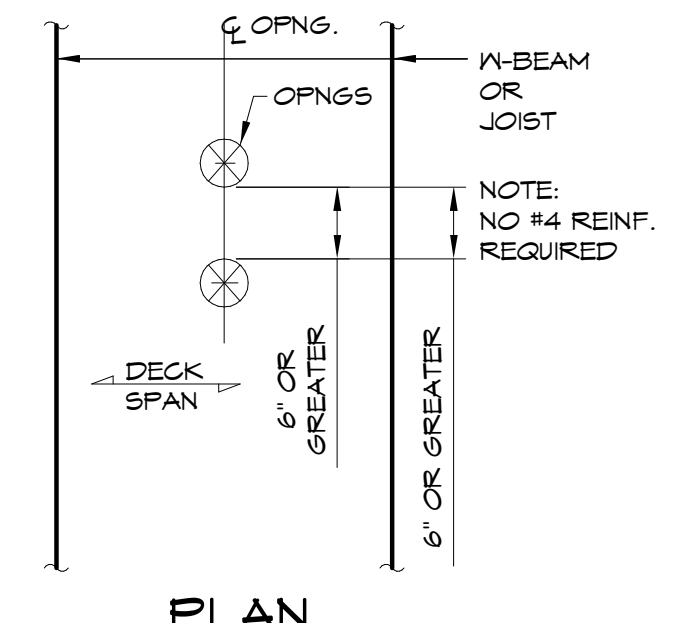
3 TYPICAL SHEAR STUD DETAIL (REBAR)
3/4" = 1'-0"



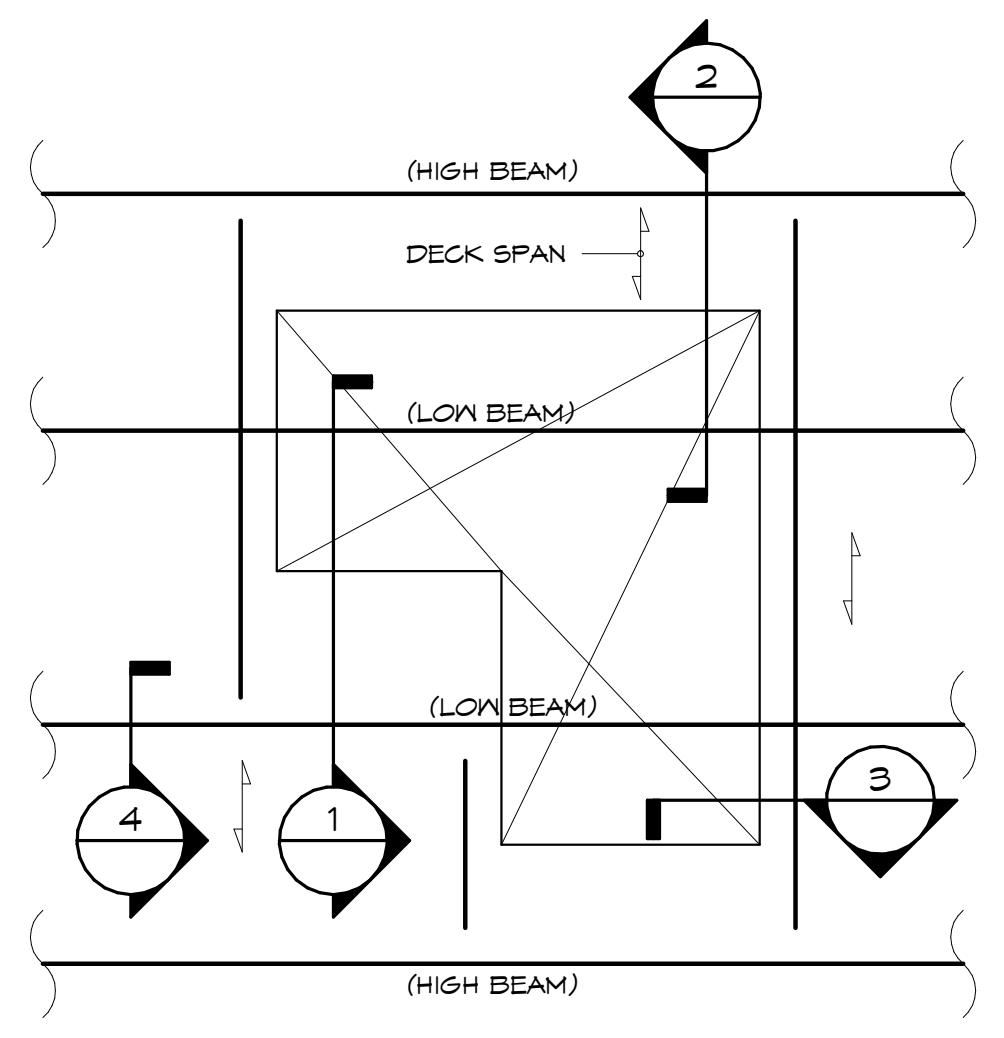
4 TYPICAL SHEAR STUD DETAIL (WVF)
3/4" = 1'-0"



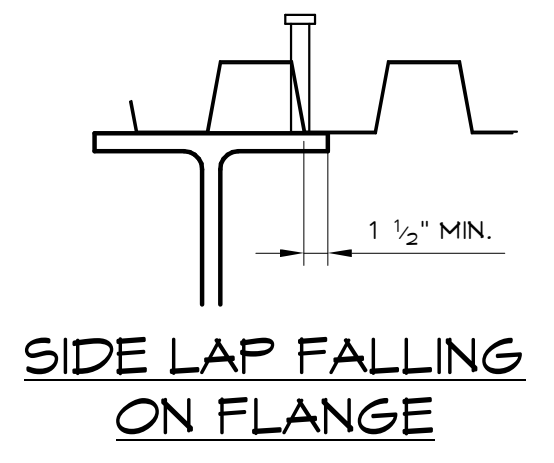
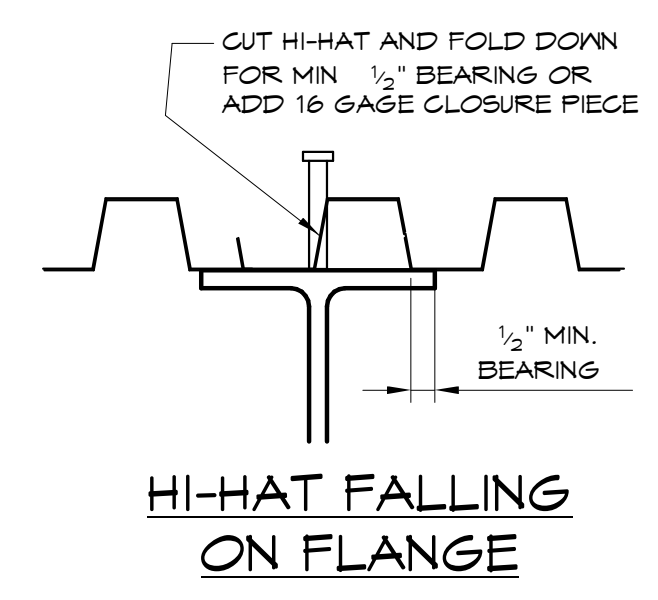
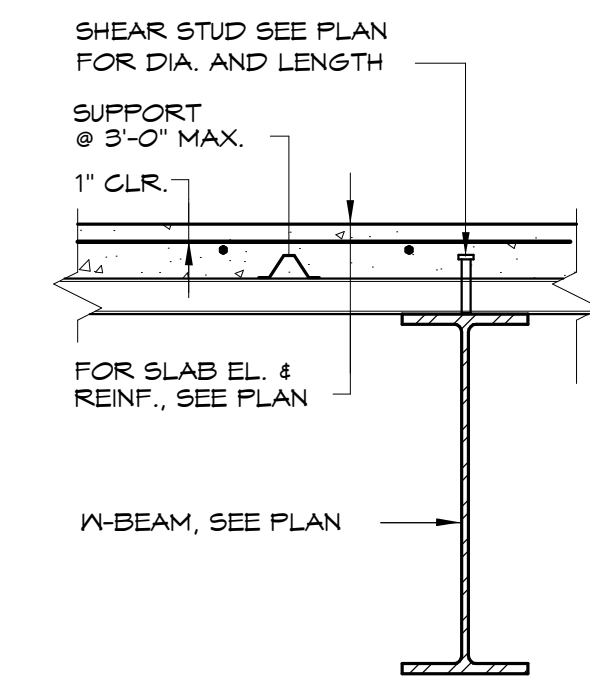
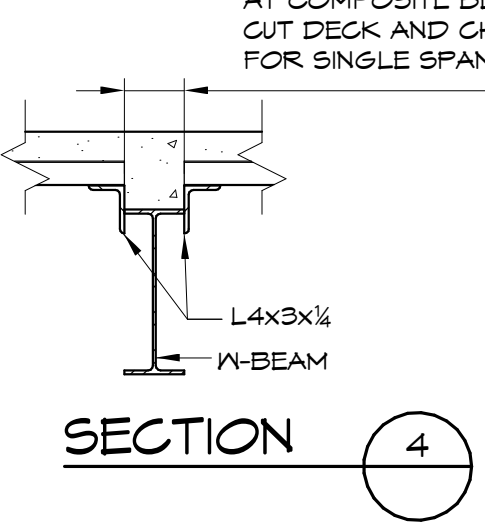
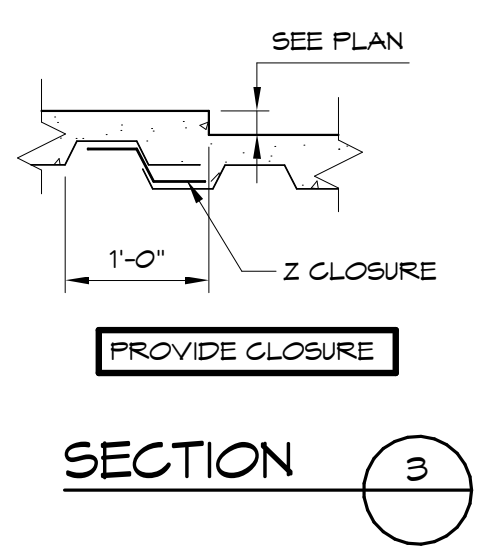
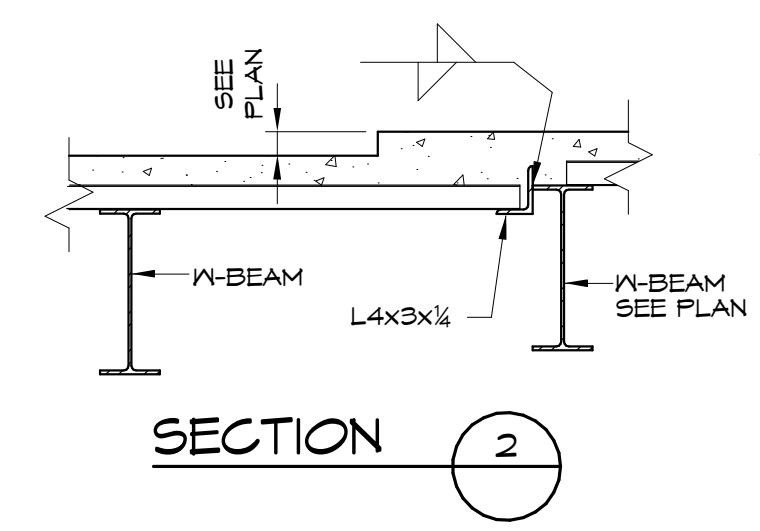
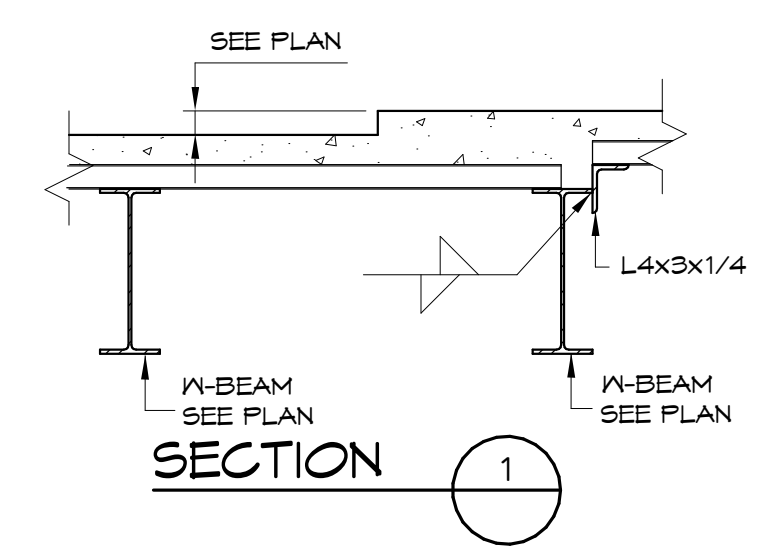
5 FLOOR OPENING IN CONCRETE ON STEEL DECK
1/4" = 1'-0"



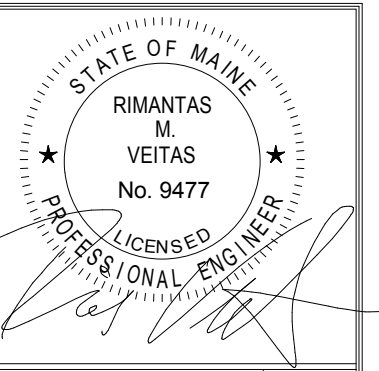
6 TYPICAL SLEEVE OPENING REINFORCING DETAIL IN CONCRETE ON STEEL DECK
3/4" = 1'-0"



7 DETAILS OF STEEL DECK AT CHANGE IN SLAB ELEVATION
3/4" = 1'-0"



8 TYPICAL SHEAR STUD DETAIL
3/4" = 1'-0"



Prepared For:
BATEMAN PARTNERS, LLC
P.O. BOX 7486
Portland, ME 04112

Consulting Engineer:
VEITAS & VEITAS engineers
68 Granite Street, Suite 101
Business: Manchester, 02184
Tel: (603) 886-2800 Fax: (603) 886-2805

Architect:
ARCHETYPE architects
48 Union Wharf Portland, Maine 04101
(207) 772-6022 Fax (207) 772-4056

Project:
16 MIDDLE STREET
MIDDLE STREET
PORTLAND, MAINE

Revisions:	01/15/16 ISSUED FOR FDN. PERMIT
	06/03/16 ISSUED FOR BUILDING PERMIT
	06/14/16 ISSUED FOR CONSTRUCTION
	07/17/16 ISSUED FOR ADDENDUM #1

Date: 01/15/16
Scale:
TYPICAL DETAILS