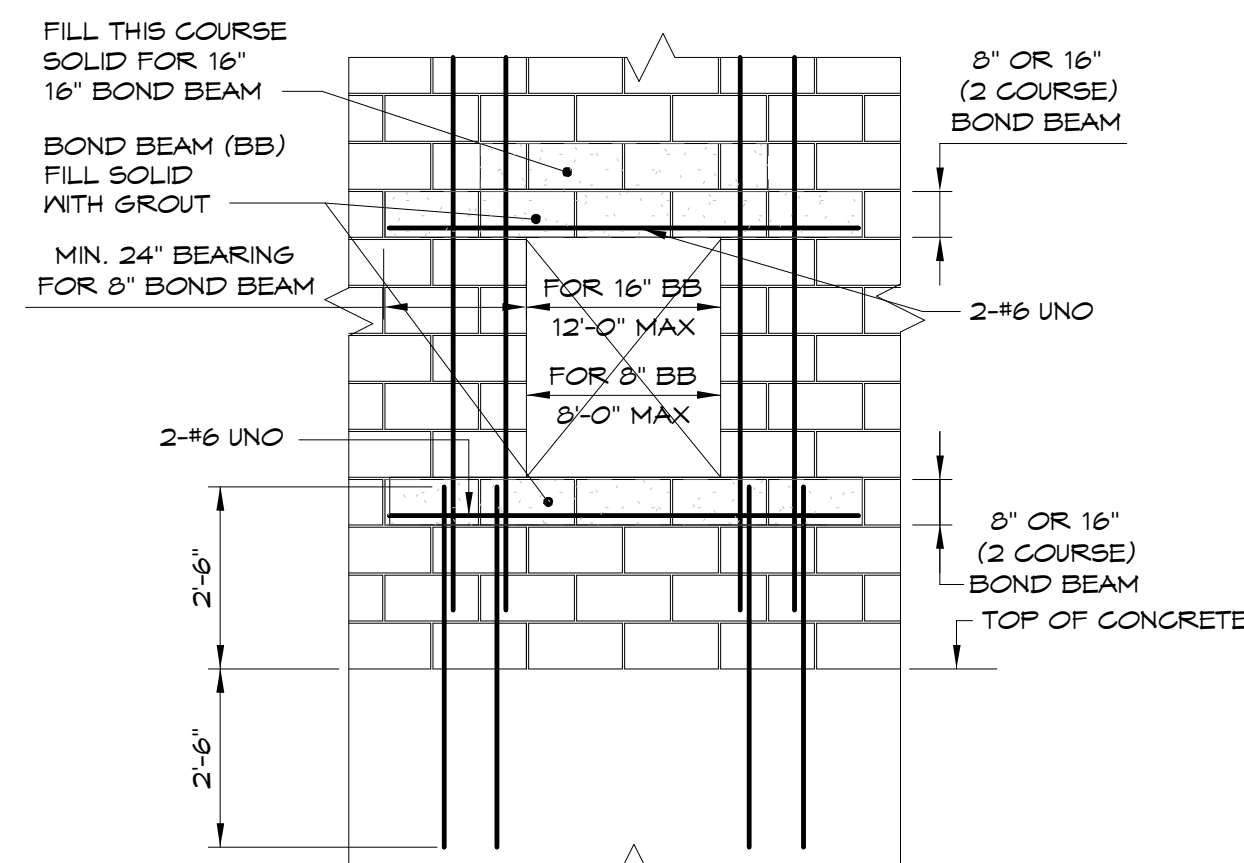


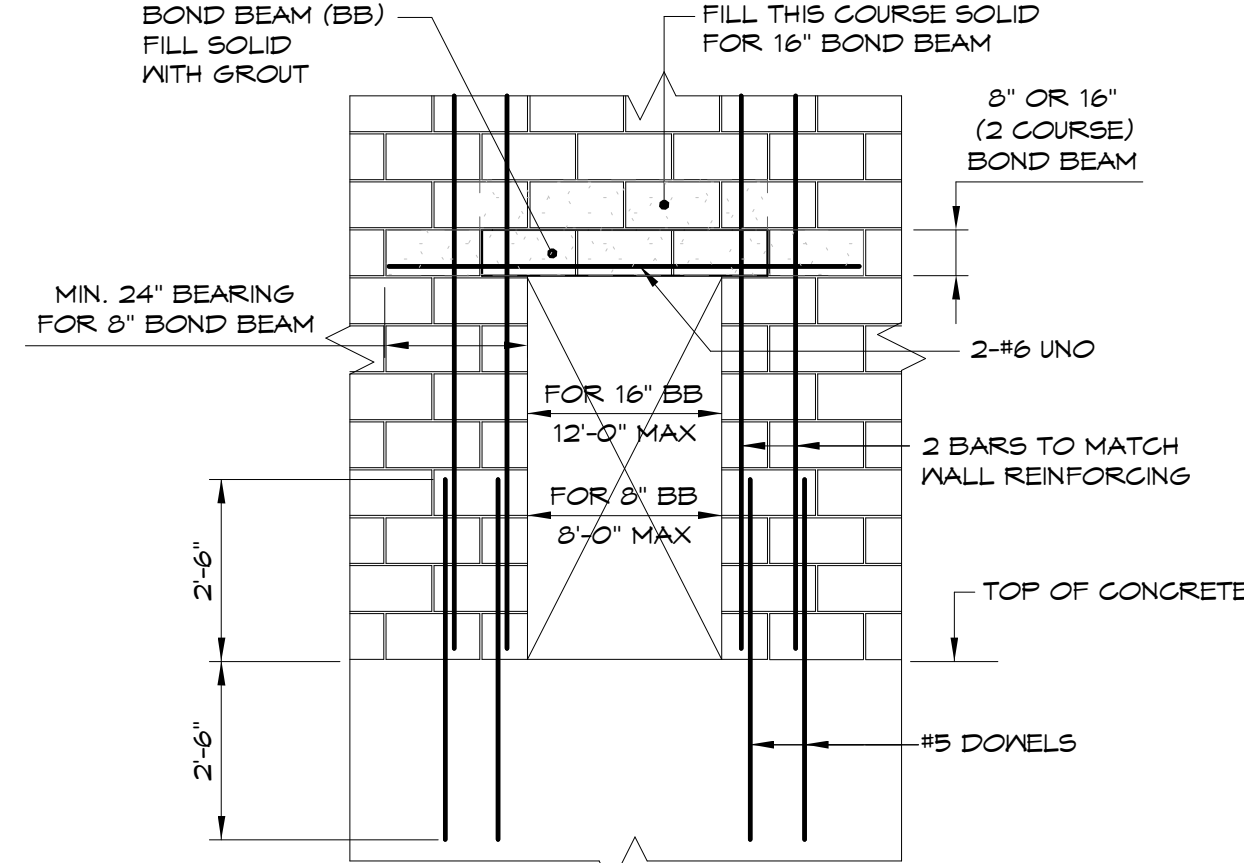
CMU LAP SCHEDULE		
BAR SIZE	LAP LENGTH	
#4	24"	
#5	30"	
#6	42"	
#7	8" CMU	12" CMU
	60"	46"
#8	NA	60"

- G.C. & MASON NOTES:**
1. THIS DETAIL IS FOR "LOW LIFT" GROUTING.
 2. THE MAXIMUM LIFT FOR "LOW LIFT" GROUTING IS 4'-8".
 3. G.C. TO COORDINATE REBAR LENGTHS WITH MASONRY CONTRACTOR PRIOR TO SUBMITTING SHOP DRAWINGS FOR CMU REINFORCING.
 4. LOCATE CMU BOND BEAMS AT EACH FLOOR LEVEL.

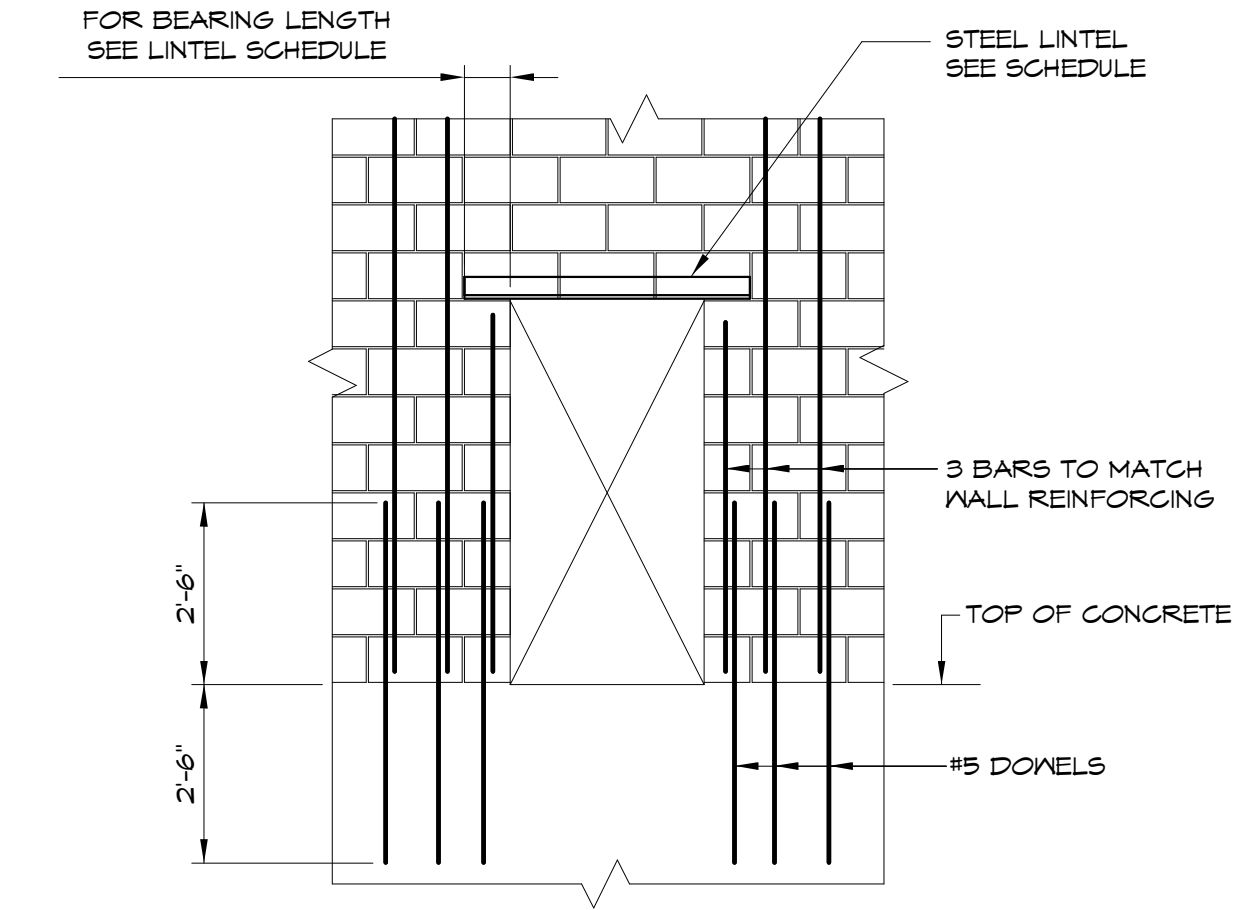
1 TYPICAL LOW LIFT GROUTING DETAIL
3/4" = 1'-0"



2 OPENING IN CMU WALL WITH BOND BEAM



3 OPENING IN CMU WALL WITH BOND BEAM

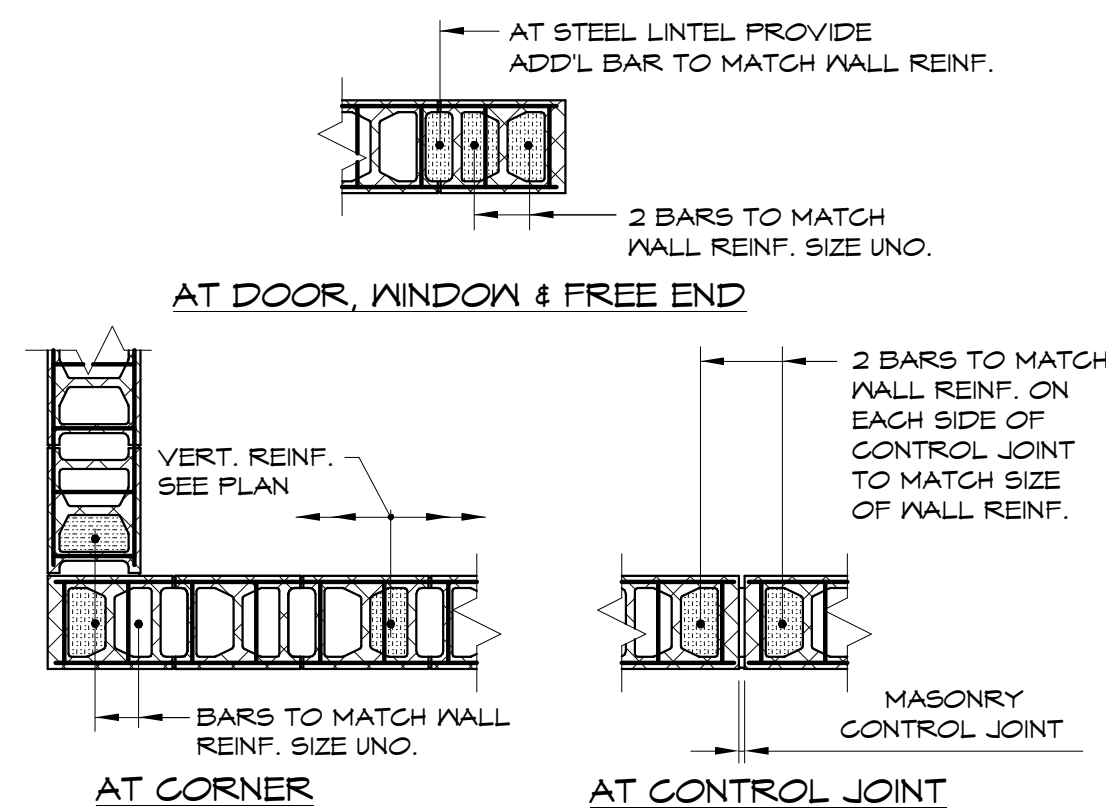


4 OPENING IN CMU WALL W/ STEEL LINTEL

LOOSE LINTEL SCHEDULE			
OPENING	LINTEL	BEARING EACH END	REMARKS
3'-6" OR LESS	L3x3x3/4	4"	---
OVER 3'-6" THRU 5'-6"	L4x3x3/4	6"	LLV
OVER 5'-6" THRU 7'-6"	L6x3x3/4	6"	LLV
OVER 7'-6" THRU 9'-6"	L8x3x3/4	6"	LLV

- NOTES:**
1. WHERE ANGLE LINTELS ARE REQUIRED PROVIDE ONE ANGLE FOR EACH 4' OR LESS THICKNESS OF MASONRY.
 2. FOR OPENINGS OVER 6'-0" PROVIDE SOLID MASONRY JAM UNDER LINTEL AT EACH SIDE OF OPENING.
 3. LINTELS INDICATED ON PLAN SUPERSEDE THE REQUIREMENTS OF THIS SCHEDULE.
 4. ALL EXTERIOR LINTELS SHALL BE HOT DIP GALVANIZED.
 5. ALL OTHER LINTELS SHALL BE PRIME PAINTED.
 6. FOR LINTELS IN LOAD BEARING WALL SEE "LOAD BEARING LINTEL SCHEDULE".

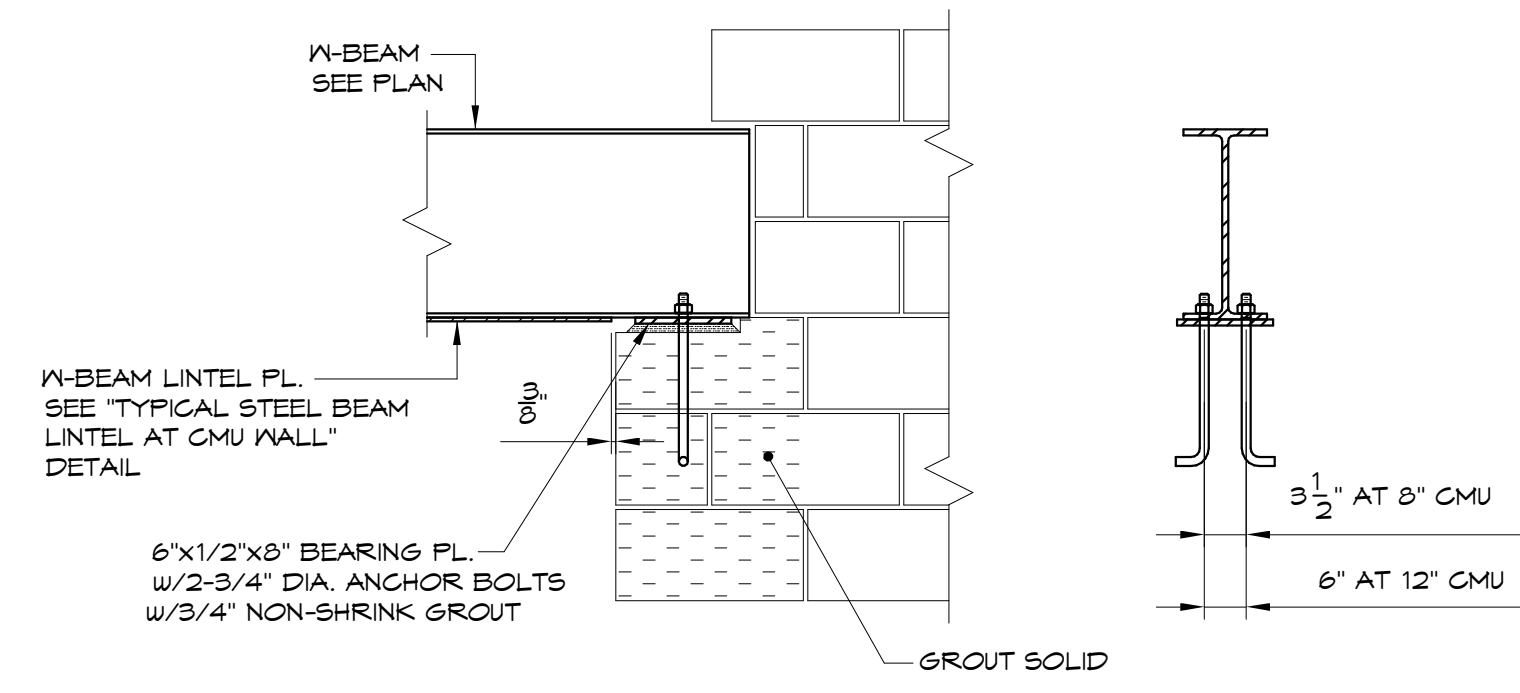
6 LOOSE LINTEL SCHEDULE
1/8" = 1'-0"



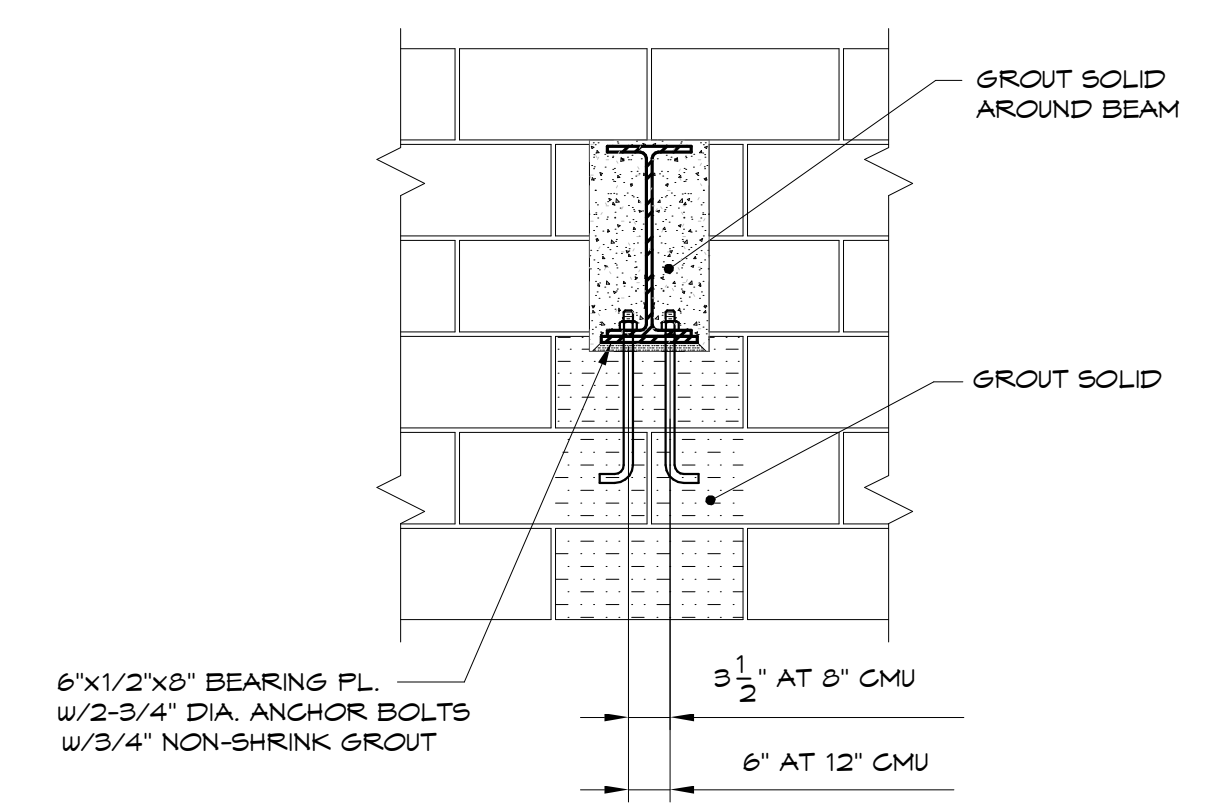
PLAN AT CMU WALL

- NOTE:**
1. PROVIDE LADDER TYPE HORIZONTAL REINFORCING AT 16" O.C.
 2. FOR HORIZONTAL BOND BEAMS & ELEVATIONS, SEE GROUTING DETAILS, PLANS & SECTIONS.

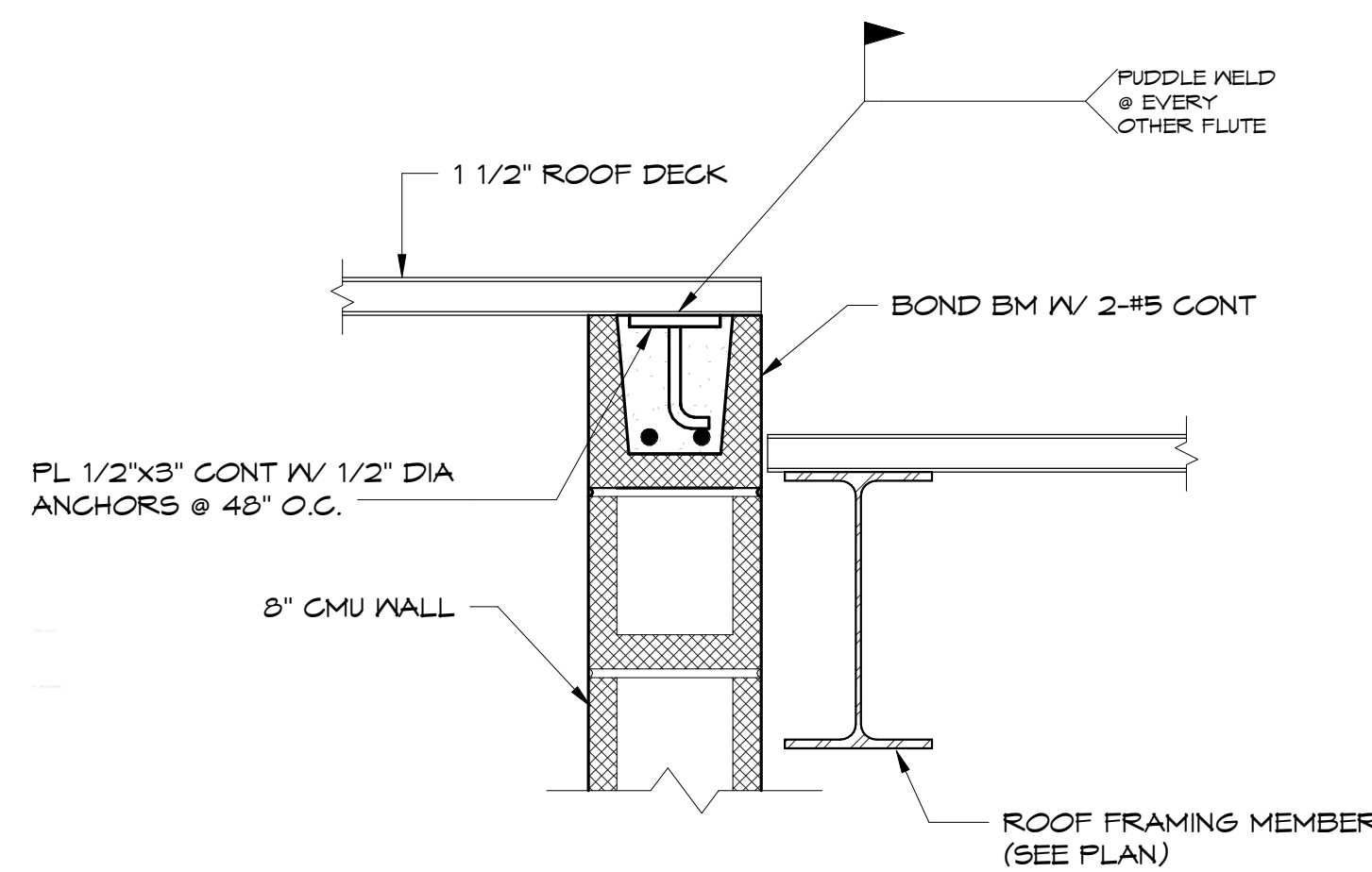
5 TYPICAL CMU DETAILS
1/2" = 1'-0"



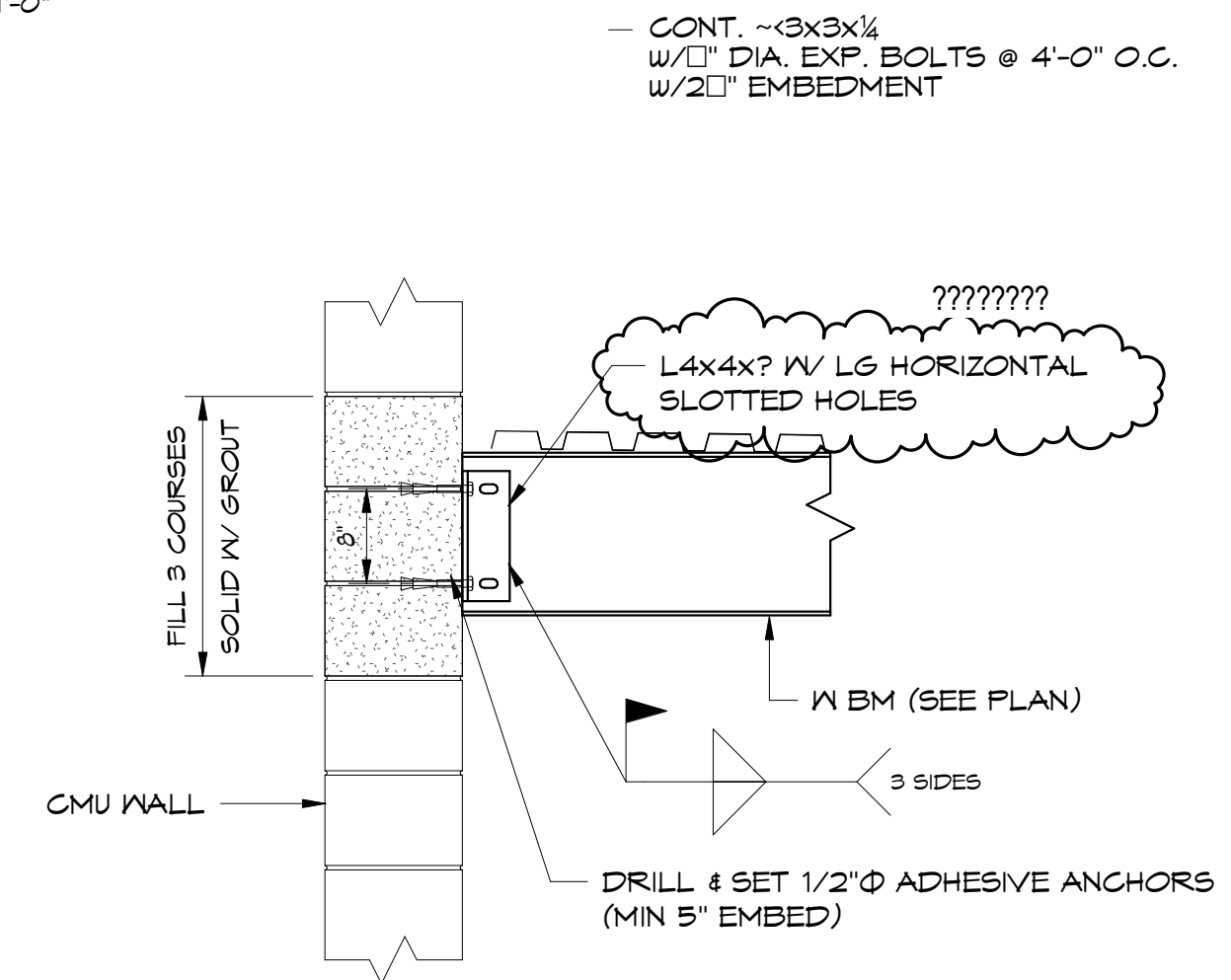
7 TYPICAL STEEL BEARING PLATE AT CMU WALL



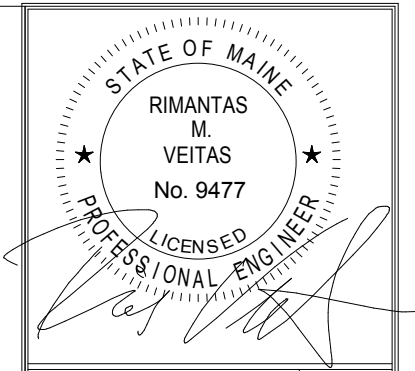
8 TYPICAL STEEL BEARING PLATE AT CMU WALL



9 SECTION - ELEVATOR ROOF
1 1/2" = 1'-0"



10 SECTION - W BM TO CMU WALL
3/4" = 1'-0"



Prepared For:
BATEMAN PARTNERS, LLC
P.O. BOX 7486
Portland, ME 04112

Consulting Engineer:
VEITAS & VEITAS engineers
68 Granite Street, Suite 101
Business Center, Portland, ME 04101
Tel: (207) 772-4056 Fax: (207) 772-4056

Architect:
ARCHETYPE architects
48 Union Wharf Portland, Maine 04101
(207) 772-6022 Fax (207) 772-4056

Project:
16 MIDDLE STREET
MIDDLE STREET
PORTLAND, MAINE

Revisions:

01/15/16	ISSUED FOR FDN. PERMIT
06/03/16	ISSUED FOR BUILDING PERMIT
06/14/16	ISSUED FOR CONSTRUCTION
07/11/16	ISSUED FOR ADDENDUM #1

Date: **01/15/16**
Scale:
TYPICAL DETAILS