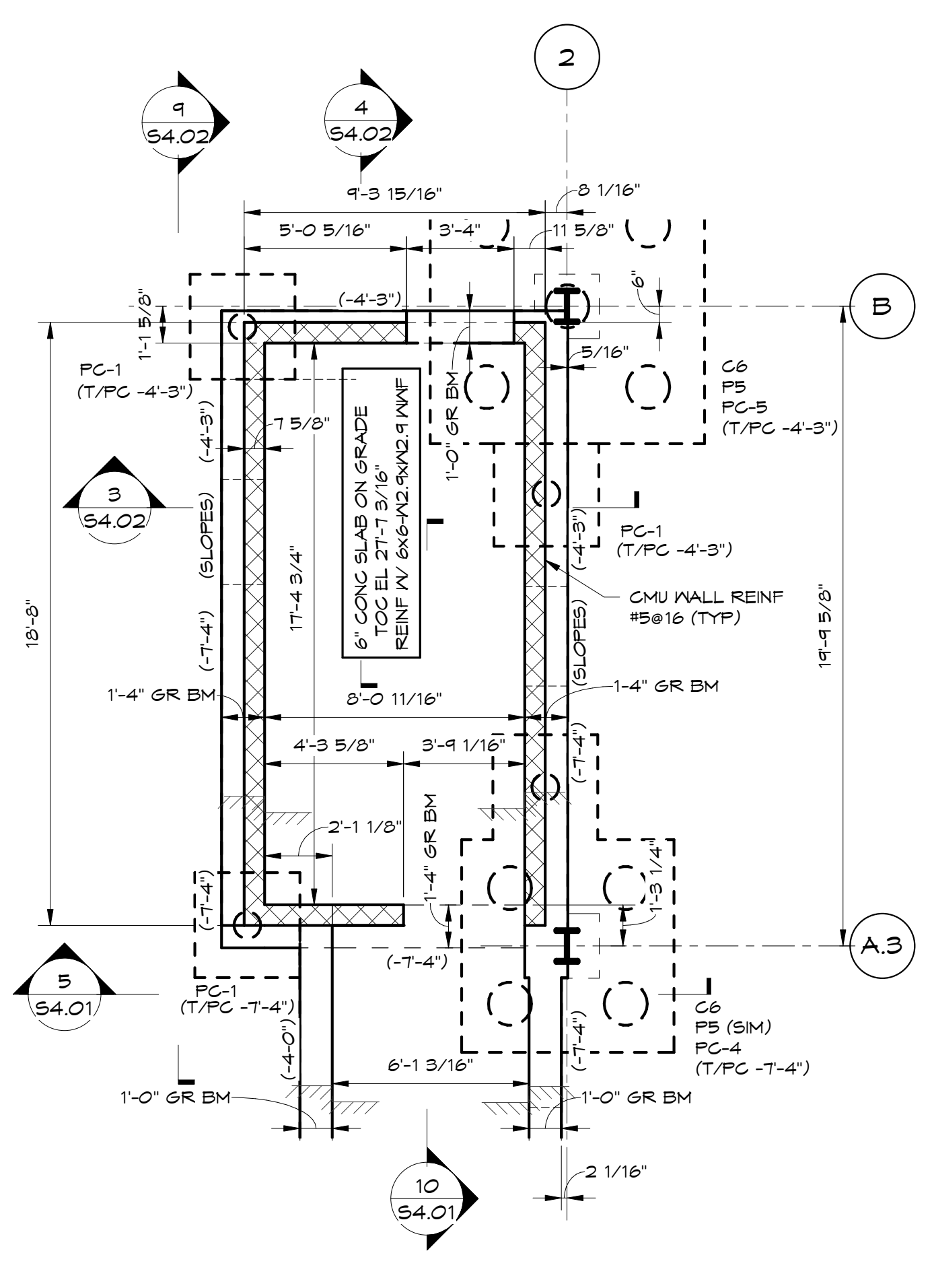
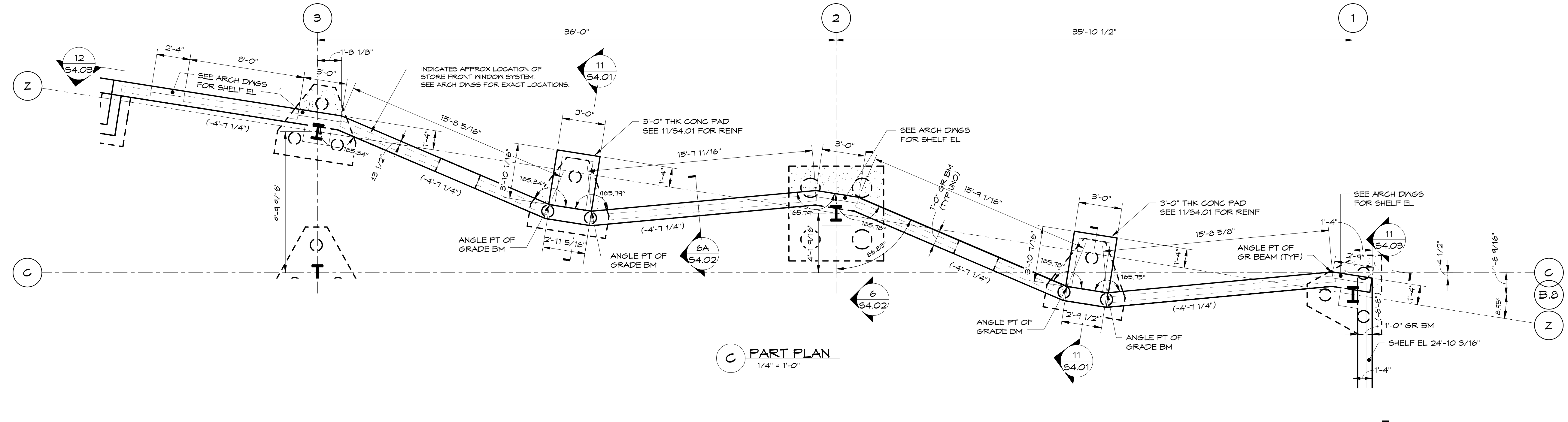


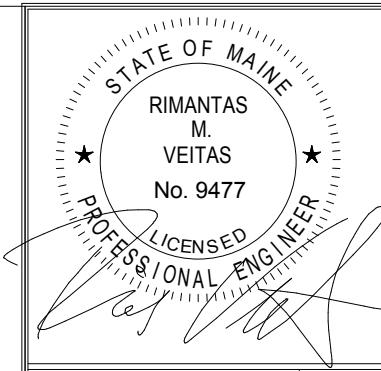
A PART PLAN
1/4" = 1'-0"



B PART PLAN
1/4" = 1'-0"



C PART PLAN
1/4" = 1'-0"



Prepared For:
BATEMAN PARTNERS, LLC
P.O. BOX 7486
Portland, ME 04112

Consulting Engineer:
VEITAS & VEITAS
engineers
68 Granite Street, Suite 101
Brunswick, Maine 02914
Tel: (207) 786-8868 Fax: (207) 786-2065

Architect:
ARCHETYPE
architects
48 Union Wharf Portland, Maine 04101
(207) 772-6022 Fax (207) 772-4056

Project:
16 MIDDLE STREET
MIDDLE STREET
PORTLAND, MAINE

Revisions:
01/15/16 ISSUED FOR FDN. PERMIT
06/03/16 ISSUED FOR BUILDING PERMIT
04/14/16 ISSUED FOR CONSTRUCTION
07/11/16 ISSUED FOR ADDENDUM #1

Date: **01/15/16**
Scale:
PART PLANS

S1.07