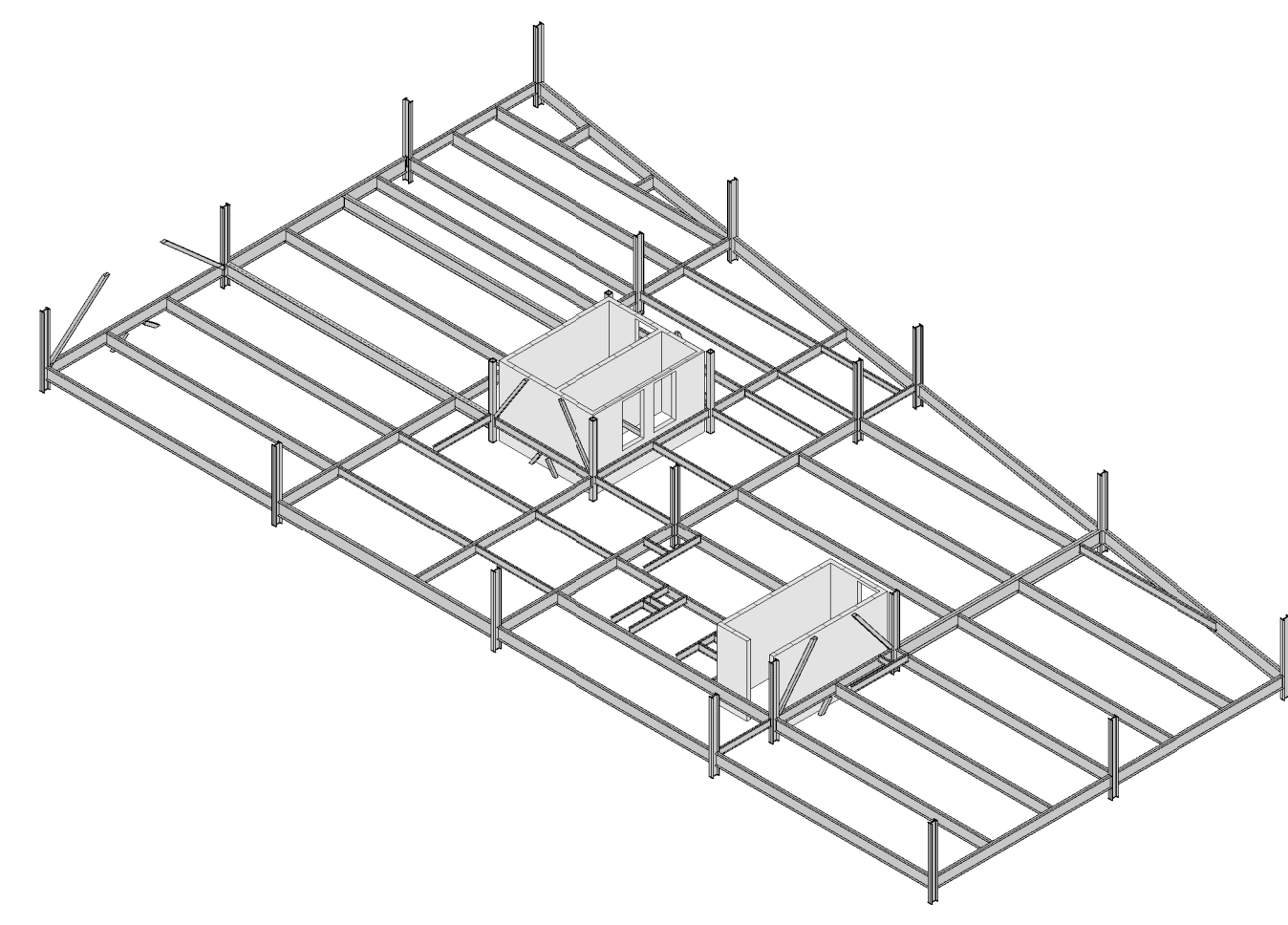


- FLOOR FRAMING NOTES:
- FOR TYPICAL DETAILS AND GENERAL NOTES SEE DRAWING S2.01.
  - TOP OF STEEL SHALL BE -6 1/4" FROM T.O.C. EL UNLESS NOTED OTHERWISE.
  - (± 0") INDICATES DEVIATION FROM TOP OF STEEL ELEVATION.
  - "C..." INDICATES COLUMN MARK. FOR COLUMN AND BASE PLATE SIZES SEE COLUMN SCHEDULE DRAWING S3.01.
  - "(X)" INDICATES THE NUMBER OF EQUALLY SPACED 3/4" DIA. x 4" LONG HEADED SHEAR STUDS.
  - "(X.XX)" INDICATES THE NUMBER OF 3/4" DIA. x 4" LONG HEADED SHEAR STUDS BETWEEN MEMBERS FRAMED PERPENDICULAR TO GIRDER.
  - "EOD" INDICATES EDGE OF FOUR STOP AND / OR EDGE OF DECK. DIMENSION FROM COLUMN GRIDLINE OR C OF BEAM IF NO COLUMN GRIDLINE.
  - USE CHAIRS SPACED AT 4'-0" O.C. TO SUPPORT #4 BARS TO PROVIDE 1" CLEAR COVER.
  - "4R" INDICATES CONNECTION DESIGN SHEAR (ASD). IF REACTION IS NOT SHOWN, REFER TO SPECIFICATIONS & GENERAL NOTES.
  - "G..." INDICATES AMOUNT OF GAMBER.
  - "BRACE X" INDICATES A BRACED FRAME. SEE DRAWING S3.02 FOR BRACE ELEVATIONS AND DETAILS.
  - "TOC EL." INDICATES TOP OF CONCRETE SLAB ELEVATION.
  - "TOS EL." INDICATES TOP OF STEEL ELEVATION.
  - "BOS EL." INDICATES BOTTOM OF STEEL ELEVATION.
  - ↔ INDICATES SPAN OF METAL DECK.

1 2nd FLOOR FRAMING PLAN  
1/8" = 1'-0"



Prepared For:	<b>BATEMAN PARTNERS, LLC</b> P.O. BOX 7486 Portland, ME 04112
Consulting Engineer:	<b>VEITAS VEITAS</b> engineers <small>68 Granite Street, Suite 10          Business, Scarborough, ME 04101          Tel: (207) 746-2800 Fax: (207) 746-2905</small>
Architect:	<b>ARCHETYPE</b> architects <small>48 Union Wharf Portland, Maine 04101          (207) 772-6022 Fax (207) 772-4056</small>
Project:	<b>16 MIDDLE STREET</b> MIDDLE STREET PORTLAND, MAINE
Revisions:	01/15/16 ISSUED FOR FDN. PERMIT 06/03/16 ISSUED FOR BUILDING PERMIT 06/14/16 ISSUED FOR CONSTRUCTION 07/11/16 ISSUED FOR ADDENDUM #1
Date:	01/15/16
Scale:	1/8" = 1'-0"
<b>2nd FLOOR FRAMING PLAN</b>	
<b>S1.02</b>	