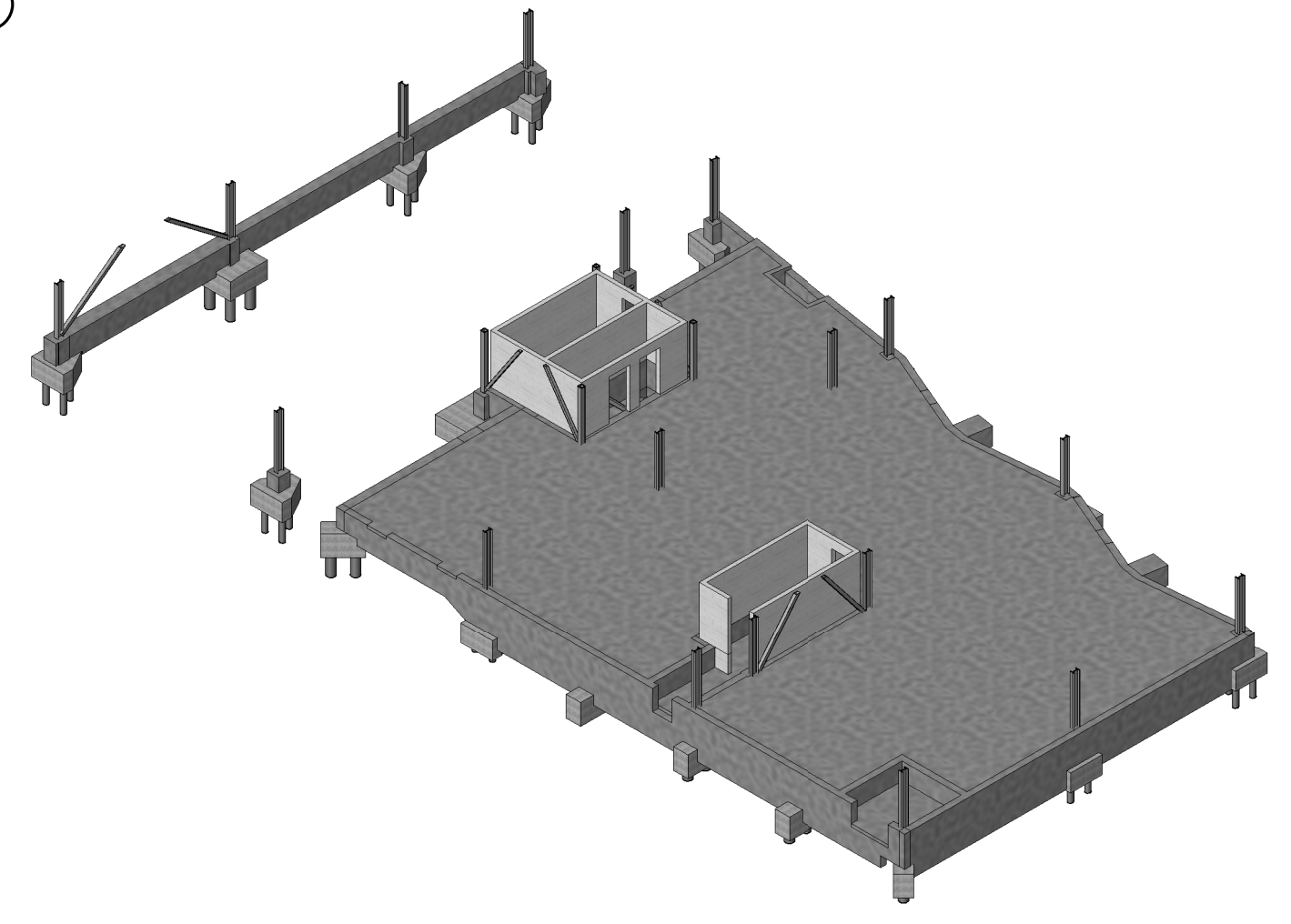
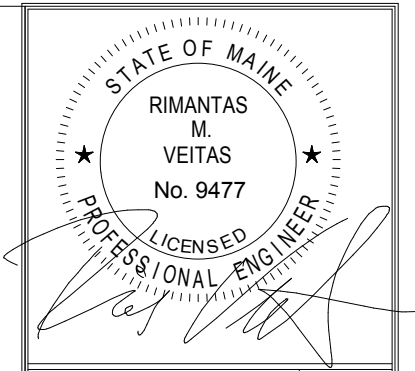


1 FOUNDATION PLAN
1/8" = 1'-0"



- FOUNDATION NOTES:
1. FOR TYPICAL DETAILS & GENERAL NOTES SEE DRAWING S2.01.
 2. REFERENCE SLAB ELEVATION SHALL BE ELEVATION 26'-7 3/16\".
 3. PC... INDICATES PILE CAP MARK. FOR FOOTING SIZES & REINFORCING SEE DETAILS ON DRAWING S2.04.
 4. P... INDICATES PIER TYPE. FOR DETAILS AND SCHEDULE SEE DRAWING S3.01.
 5. C... INDICATES COLUMN MARK. FOR SIZES SEE COLUMN SCHEDULE ON DRAWING S3.01.
 6. BOTTOM OF EXTERIOR GRADE BEAM SHALL BE -4'-6\" FROM REFERENCE SLAB ELEVATION UNLESS NOTED THIS: (...).
 7. TOP OF INTERIOR PILE CAPS SHALL BE -1'-0\" FROM REFERENCE SLAB ELEVATION UNLESS NOTED THIS: (T/F...).
 8. TOP OF EXTERIOR GRADE BEAM (TOM) SHALL BE 0\" FROM REFERENCE SLAB ELEVATION UNLESS NOTED THIS: 'TOM EL.'
 9. TOP OF EXTERIOR PIER AND TOP OF EXTERIOR WALL PIERS SHALL BE -8\" FROM REFERENCE SLAB ELEVATION UNLESS NOTED THIS: (...).
 10. TOP OF INTERIOR PIERS SHALL BE -1'-0\" FROM REFERENCE SLAB ELEVATION UNLESS NOTED THIS: (...).
 11. (...) INDICATES BOTTOM OF GRADE BEAM ELEVATION FROM REFERENCE SLAB ELEVATION.
 12. (...) INDICATES TOP OF PIER ELEVATION FROM REFERENCE SLAB ELEVATION.
 13. (T/PC...) INDICATES TOP OF PILE CAP ELEVATION FROM REFERENCE SLAB ELEVATION.
 14. ALL EXPOSED CONCRETE TO BE 'RUBBED' FINISH.
 15. FOR FLOOR DRAIN ELEVATIONS, SLAB DEPRESSIONS AND SLOPING CONCRETE FLOORS SEE ARCHITECTURAL DRAWINGS.
 16. FOR DIMENSIONS & SLOPES OF LOADING DOCKS, RAMPS & SIDEWALKS SEE ARCHITECTURAL DRAWINGS.
 17. FOR ELEVATIONS OF GRADE BEAM PENETRATIONS SEE MECHANICAL AND CIVIL DRAWINGS. SEE DRAWING SXX FOR TYPICAL DETAIL AT PIPE SLEEVES.
 18. THE GENERAL CONTRACTOR SHALL COORDINATE DEPTH OF ALL SLAB DEPRESSIONS SHOWN ON PLANS.
 19. PROVIDE #5 DONNEL X 5'-0\" LG. TO MATCH SPACING OF MASONRY WALL REINFORCING.
 21. THE EXTERIOR WALL FOOTINGS HAVE BEEN DROPPED AT LOCATIONS OF SEWERS, DRAINS, GAS LINES AND WATERLINES. THE TOP OF FOOTING IS SET AT 8 INCHES PLUS/MINUS LOWER THAN THE PIPE INVERT ELEVATION. THE GENERAL CONTRACTOR SHALL NOTIFY THE ENGINEER IF STEPPED FOOTINGS ARE NOT LOCATED AT EXTERIOR WALL PIPE PENETRATIONS.
 22. FOR LOCATION AND EXTENT OF FOUNDATION INSULATION SEE ARCHITECTURAL DRAWINGS.
 23. ALL PILES HAVE 60 TON BEARING CAPACITY.



Prepared For:
BATEMAN PARTNERS, LLC
P.O. BOX 7486
Portland, ME 04112

Consulting Engineer:
VEITAS ENGINEERS
638 Granite Street, Suite 101
Business: 2014
Tel: 707.606.8888 Fax: 707.606.2005

Architect:
ARCHETYPE architects
48 Union Wharf Portland, Maine 04101
(207) 772-6022 Fax (207) 772-4056

Project:
16 MIDDLE STREET
MIDDLE STREET
PORTLAND, MAINE

Revisions:
01/15/16 ISSUED FOR FDN. PERMIT
06/03/16 ISSUED FOR BUILDING PERMIT
06/14/16 ISSUED FOR CONSTRUCTION
07/17/16 ISSUED FOR ADDENDUM #1

Date: 01/15/16
Scale:
FOUNDATION PLAN

S1.01