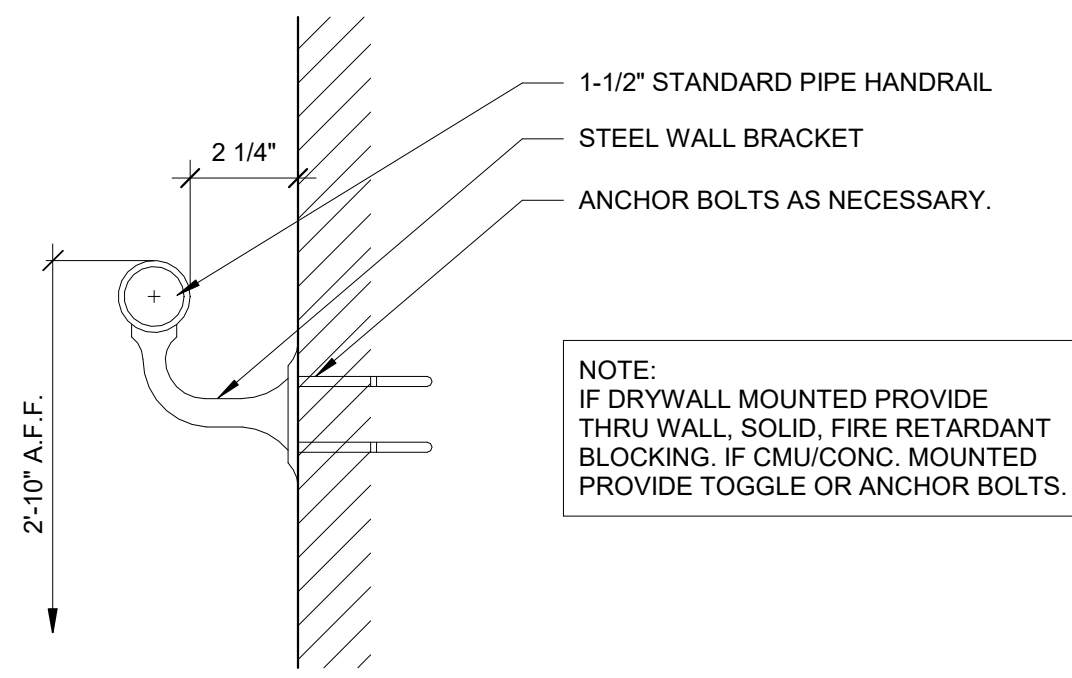
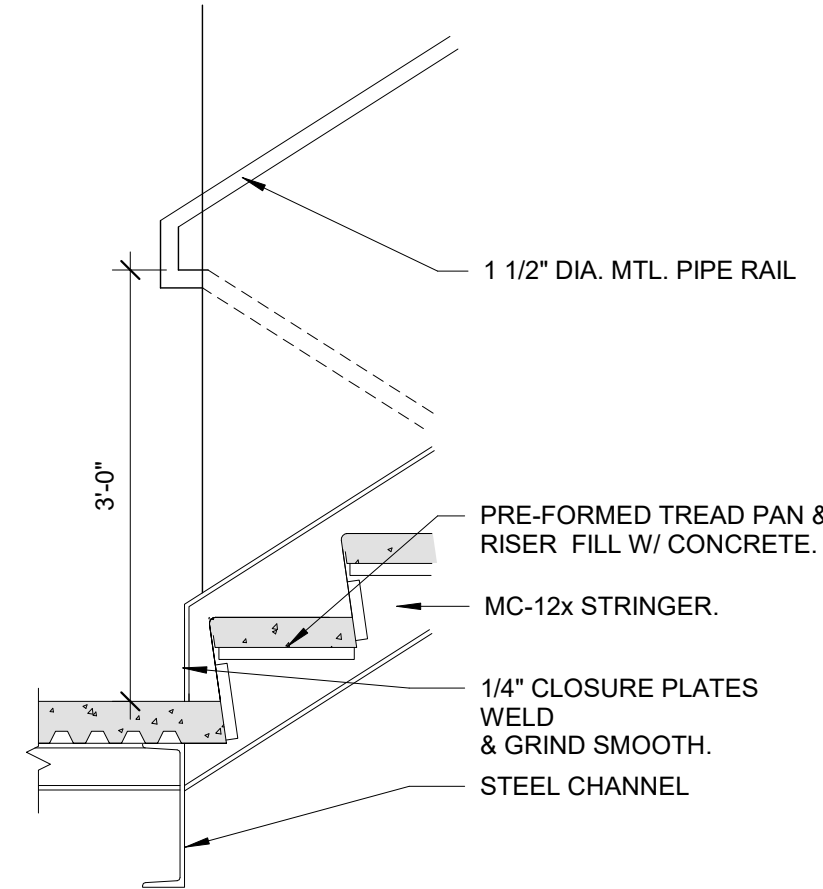


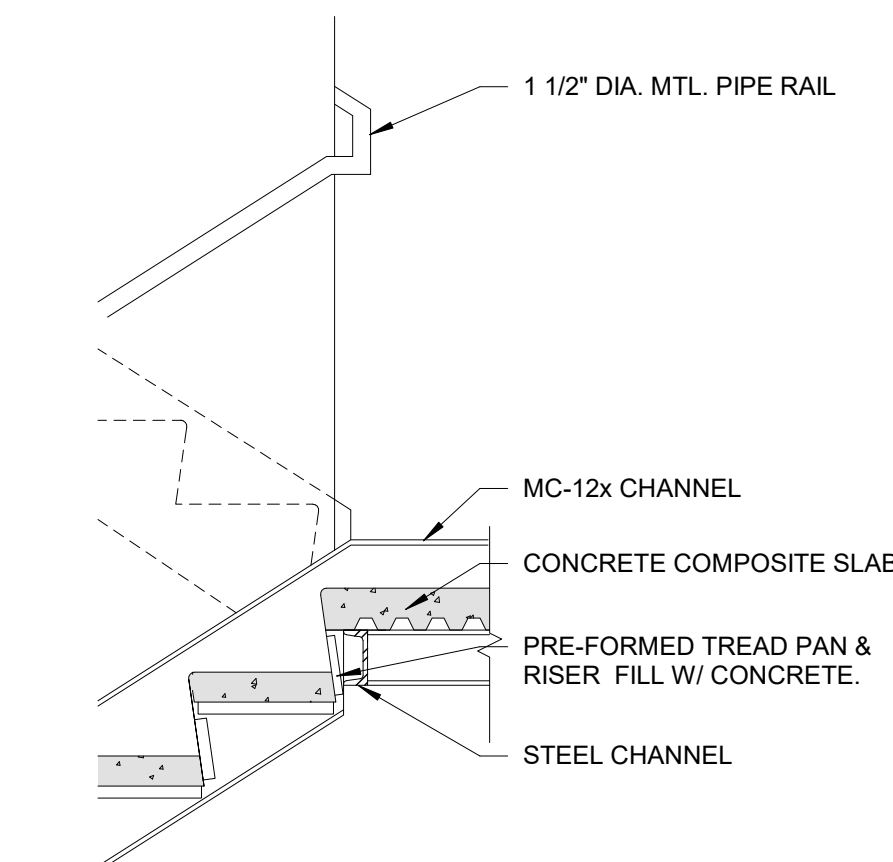
10 | STAIR - METAL HANDRAIL DETAIL - PLAN
3/4" = 1'-0"



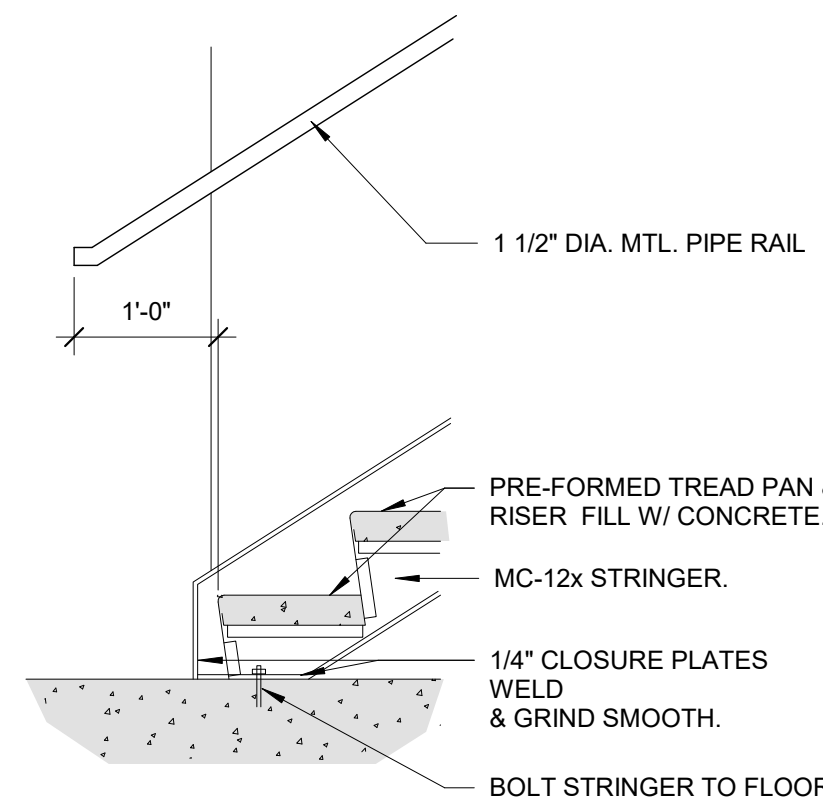
11 | STAIR - METAL HANDRAIL DETAIL - SECTION
3/4" = 1'-0"



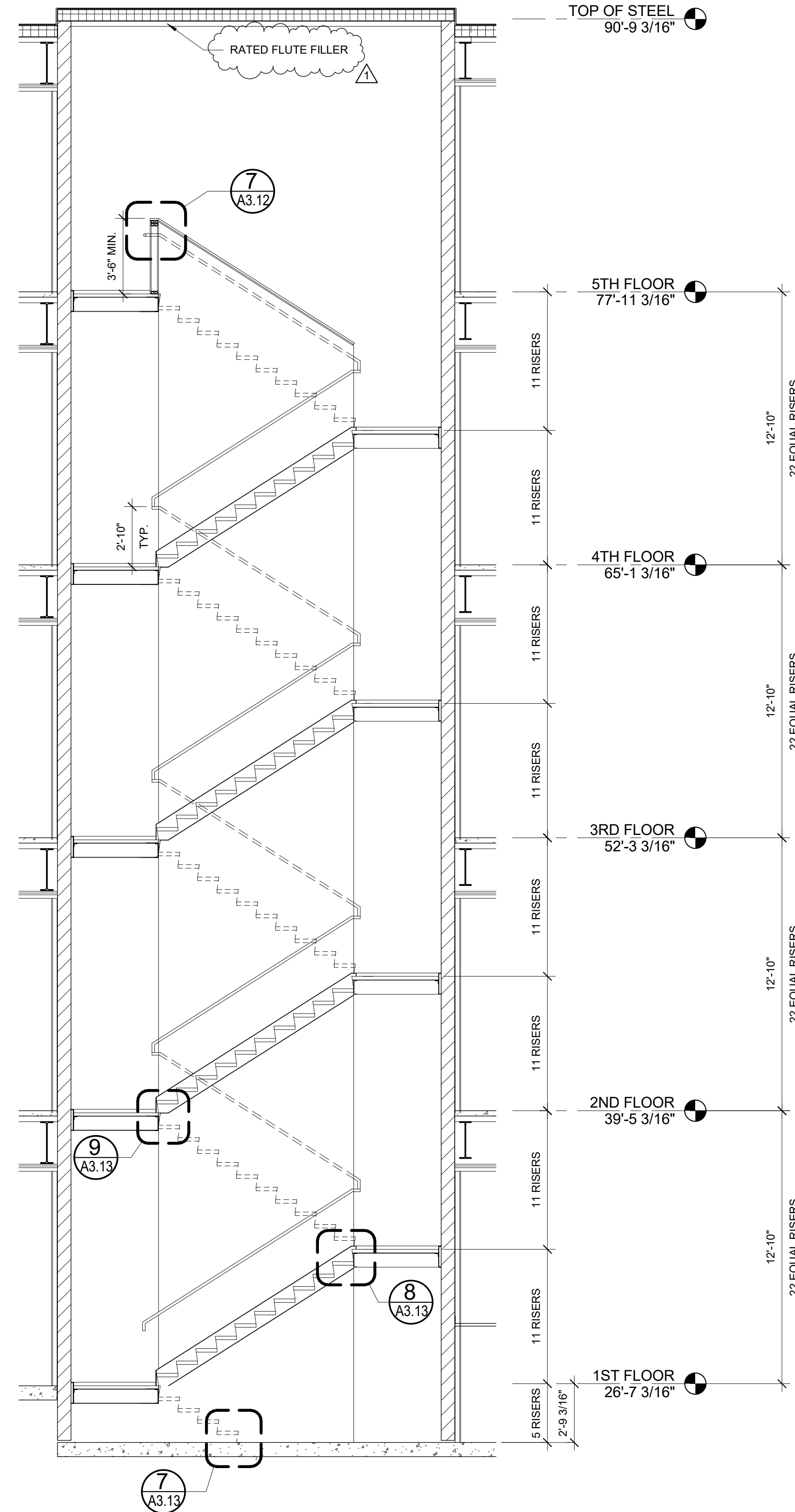
9 | STAIR DETAIL - B/O RUN TO LANDING
3/4" = 1'-0"



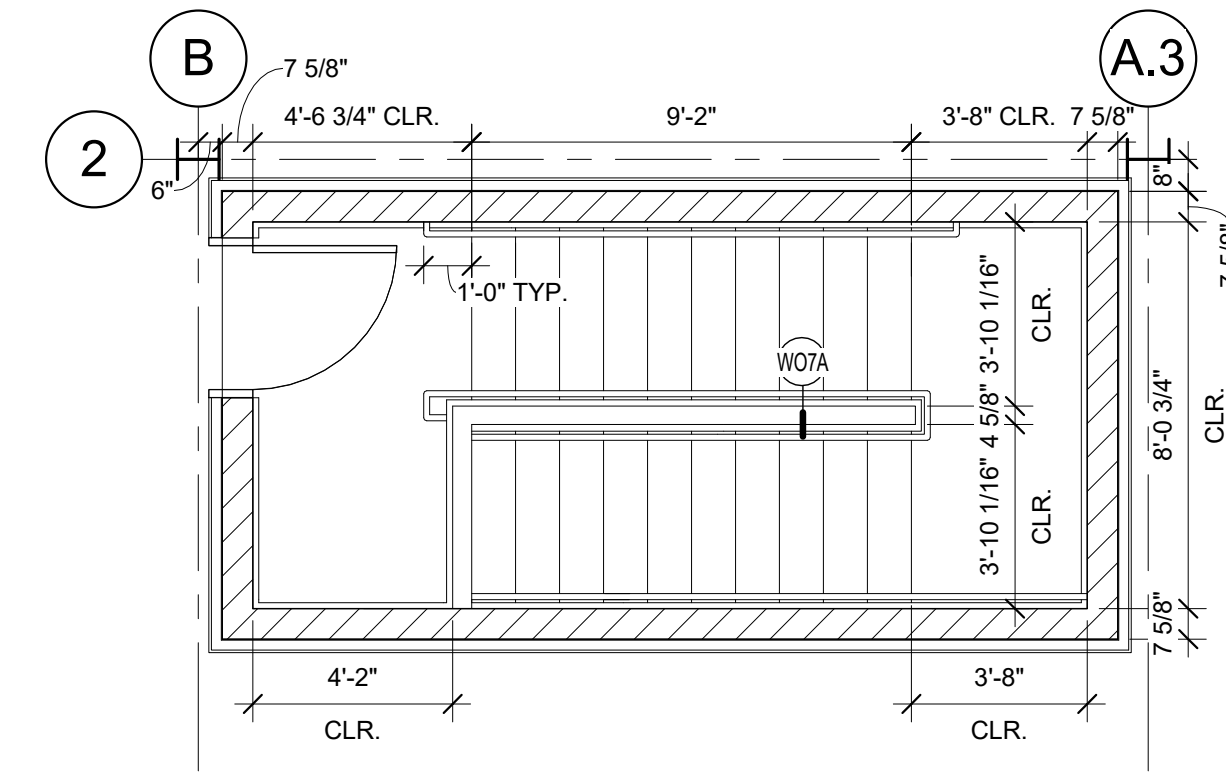
8 | STAIR DETAIL - T/O RUN TO LANDING
3/4" = 1'-0"



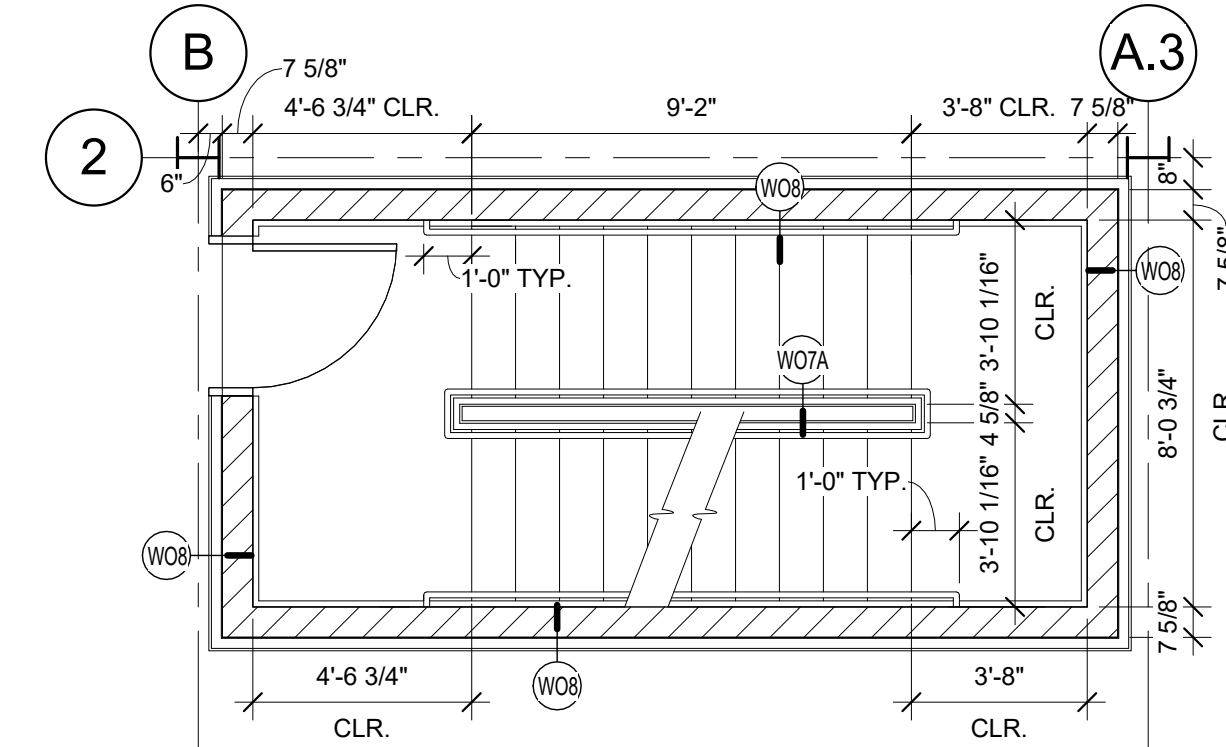
7 | STAIR DETAIL - B/O RUN TO DECK
3/4" = 1'-0"



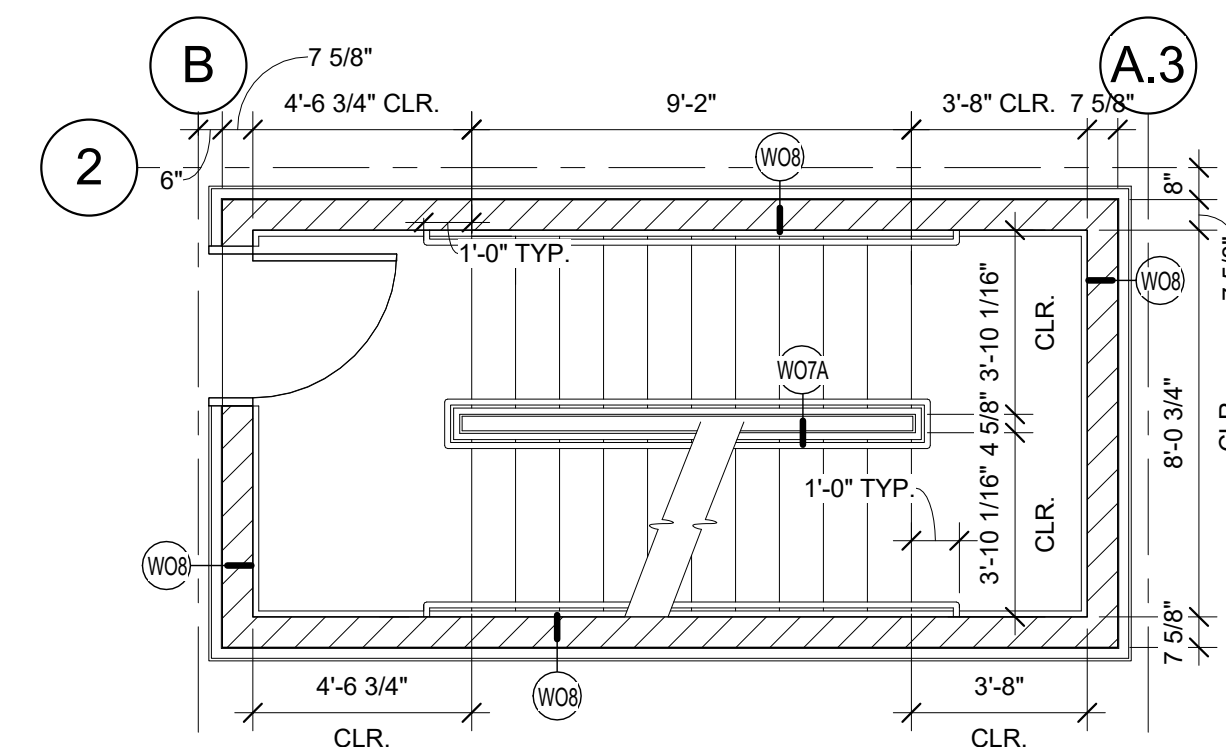
6 | SECTION AT STAIR B
1/4" = 1'-0"



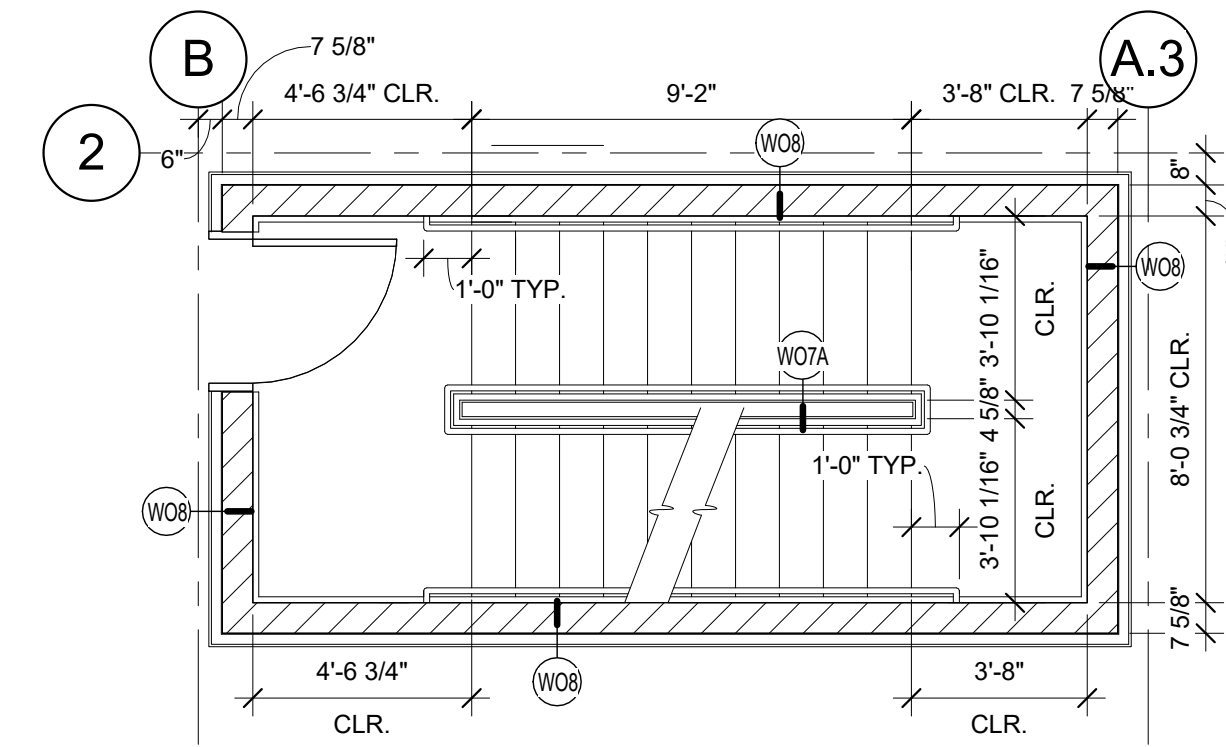
5 | FIFTH FLOOR PLAN AT STAIR B
1/4" = 1'-0"



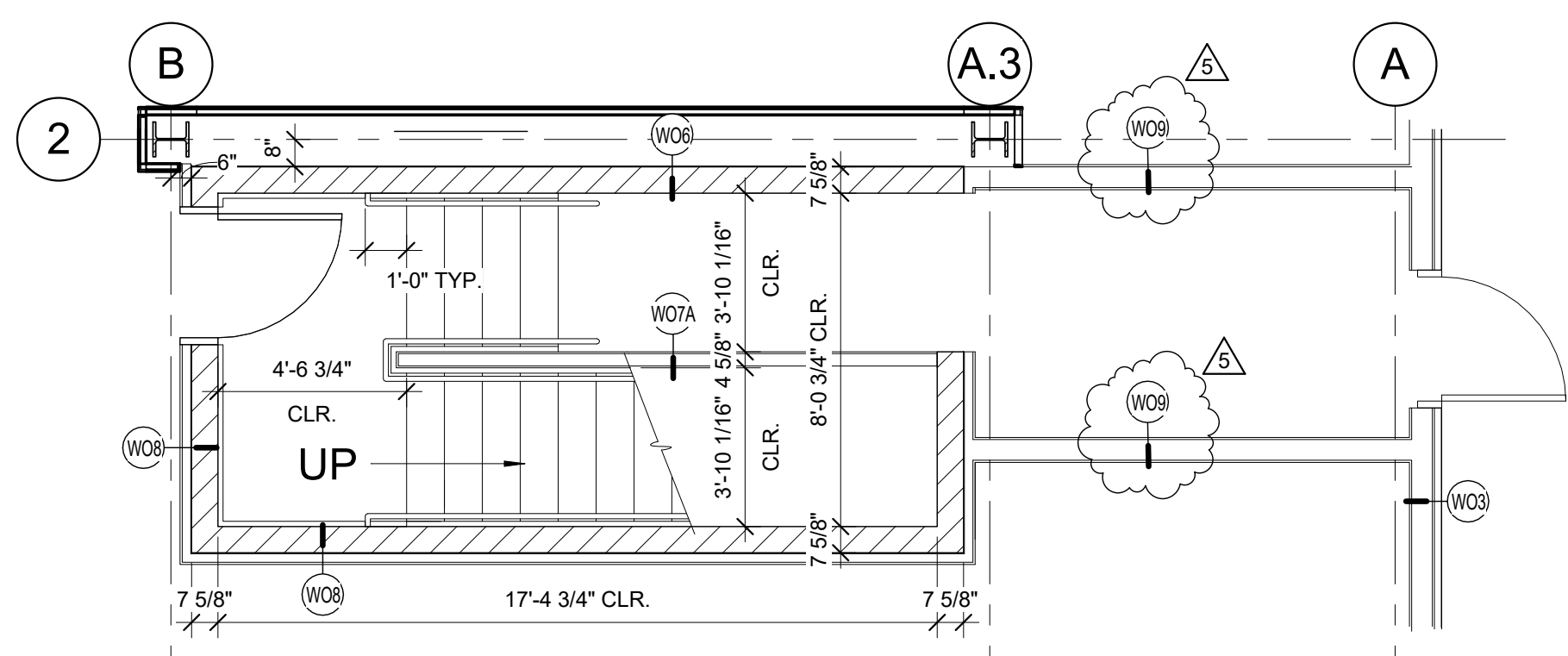
4 | FOURTH FLOOR PLAN AT STAIR B
1/4" = 1'-0"



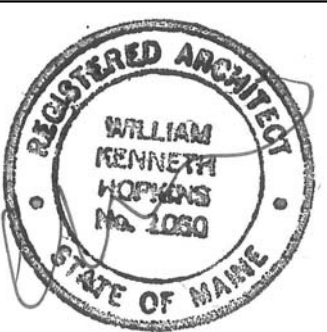
3 | THIRD FLOOR PLAN AT STAIR B
1/4" = 1'-0"



2 | SECOND FLOOR PLAN AT STAIR B
1/4" = 1'-0"



1 | FIRST FLOOR PLAN AT STAIR B
1/4" = 1'-0"



Prepared For:
16 Middle Street Associates, LLC
Address
City, State

Consultant:
ARCHITYPE Architects
48 Union Wharf Portland, Maine 04101
(207) 772-0022 ARCHITYPE@ARCHITYPEPA.COM

Project:
16 Middle Street Condominium
16 Middle Street
Portland, Maine

Revisions:	Date	Description
1	6/10/16	ADDENDUM 1
2	6/22/16	ADDENDUM 2
5	1/5/17	REVISIONS FOR CITY

Date:
June 3, 2016
Scale:
As indicated
Stair Sections and Details

A3.13