

Prepared For:  
**16 Middle Street  
Associates, LLC**

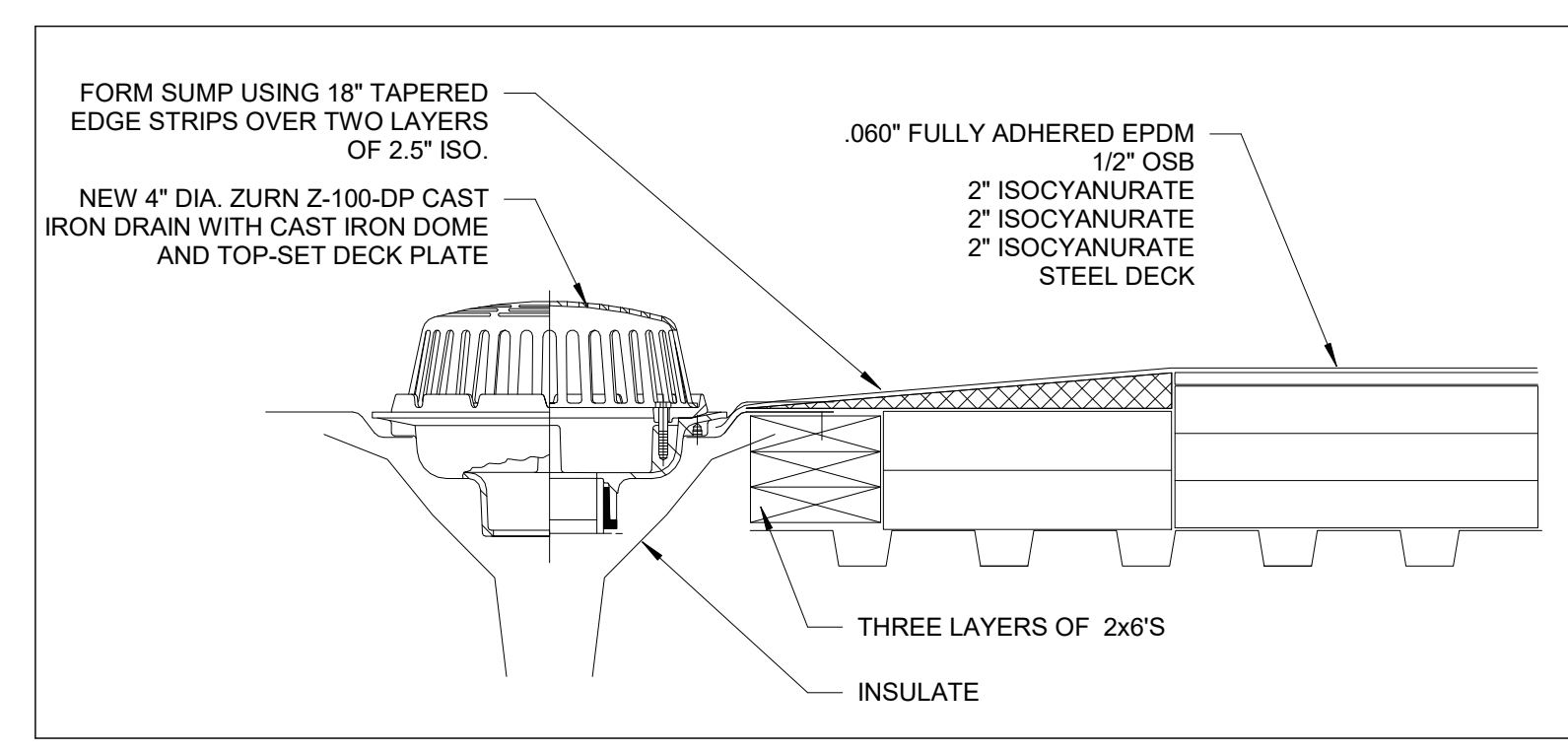
Consultant:  
**ARCHETYPE  
architects**  
48 Union Wharf Portland, Maine 04101  
(207) 772-0022 ARCHETYPE@ARCHETYPEPA.COM

Project:  
**16 Middle Street  
Condominium**  
16 Middle Street  
Portland, Maine

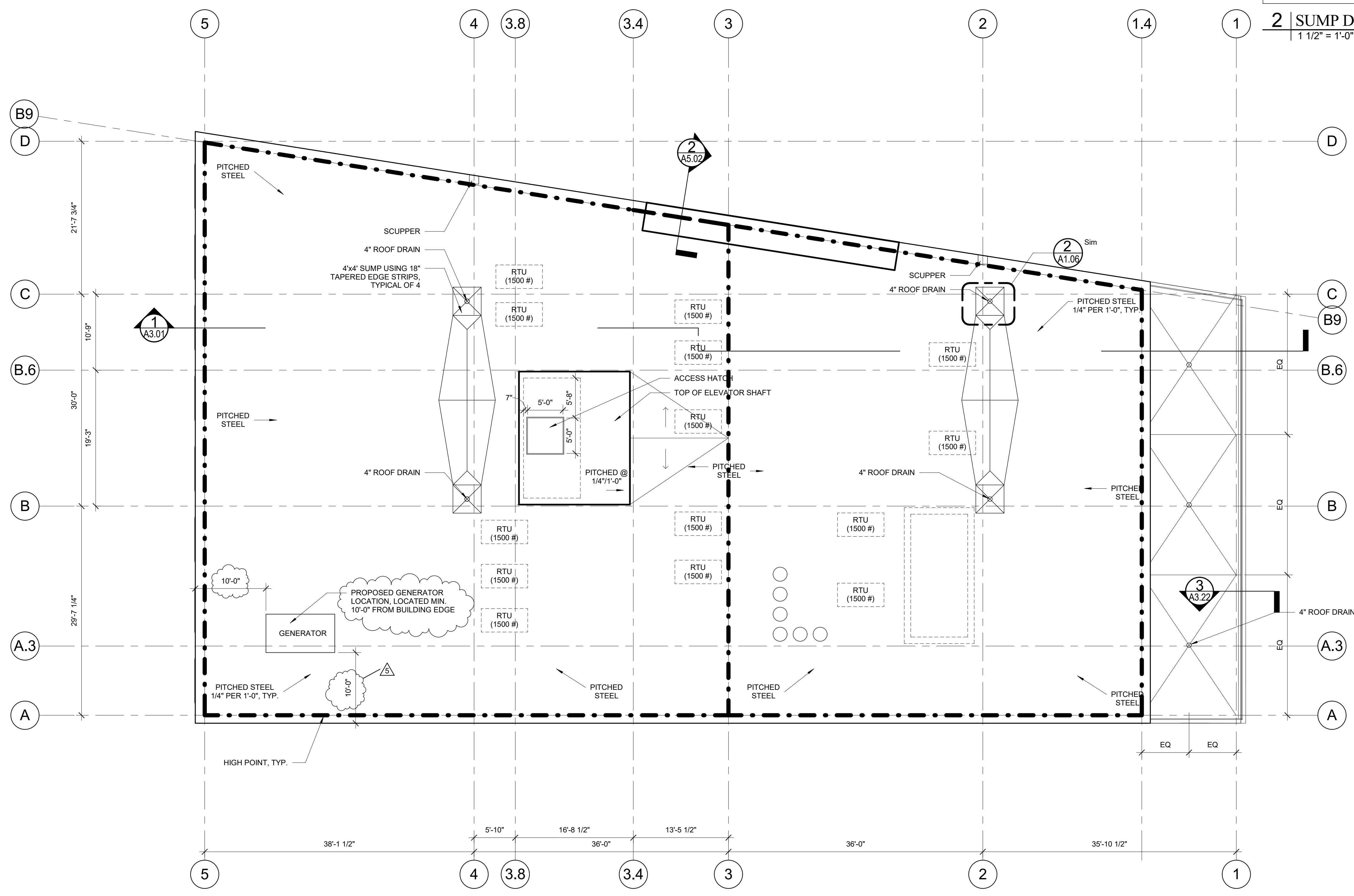
Revisions:  
5 11/5/17 REVISIONS FOR CITY

Date:  
June 3, 2016  
Scale:  
As indicated  
**Roof Plan**

**A1.06**



**2 | SUMP DETAIL**  
1 1/2" = 1'-0"



**1 | ROOF PLAN**  
1/8" = 1'-0"