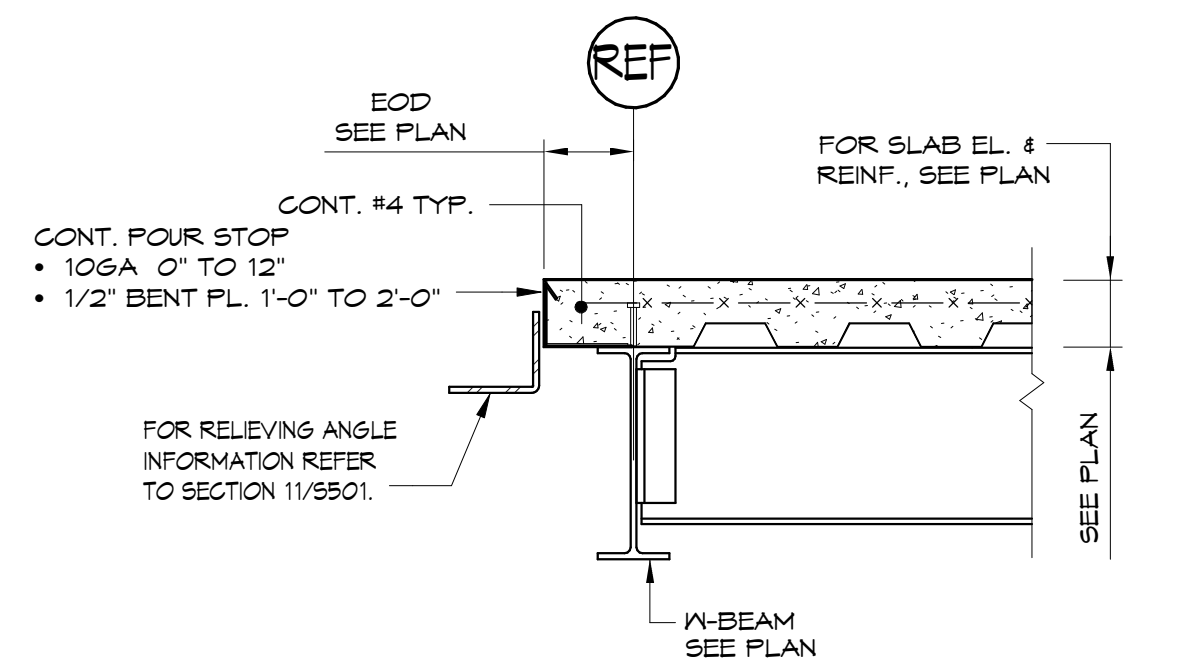
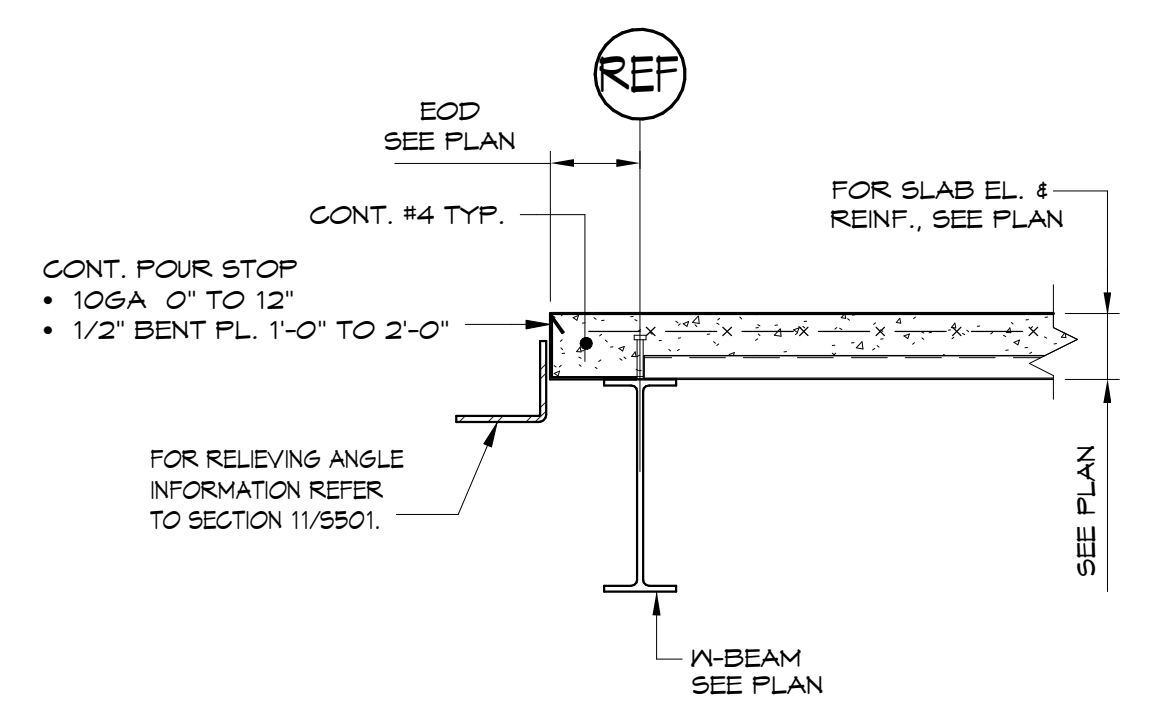


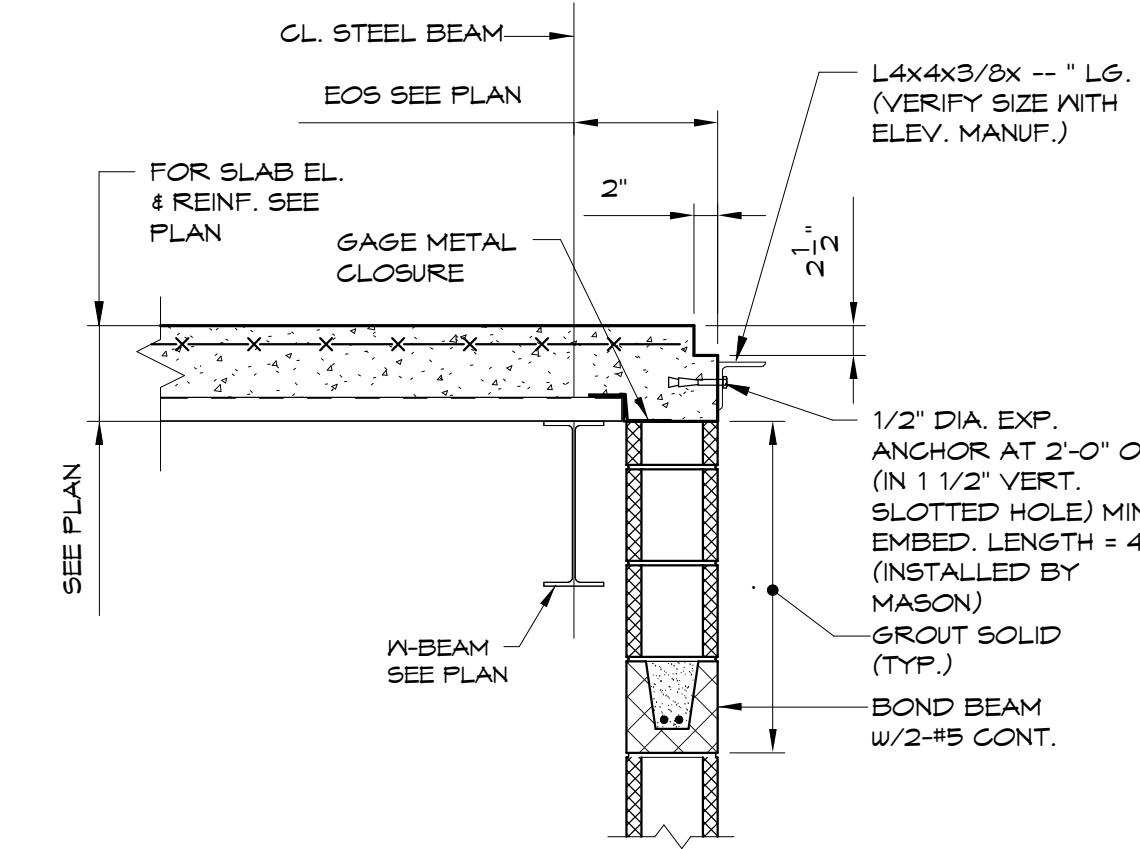
1 ELEVATOR ROOF FRAMING PLAN
1/4" = 1'-0"



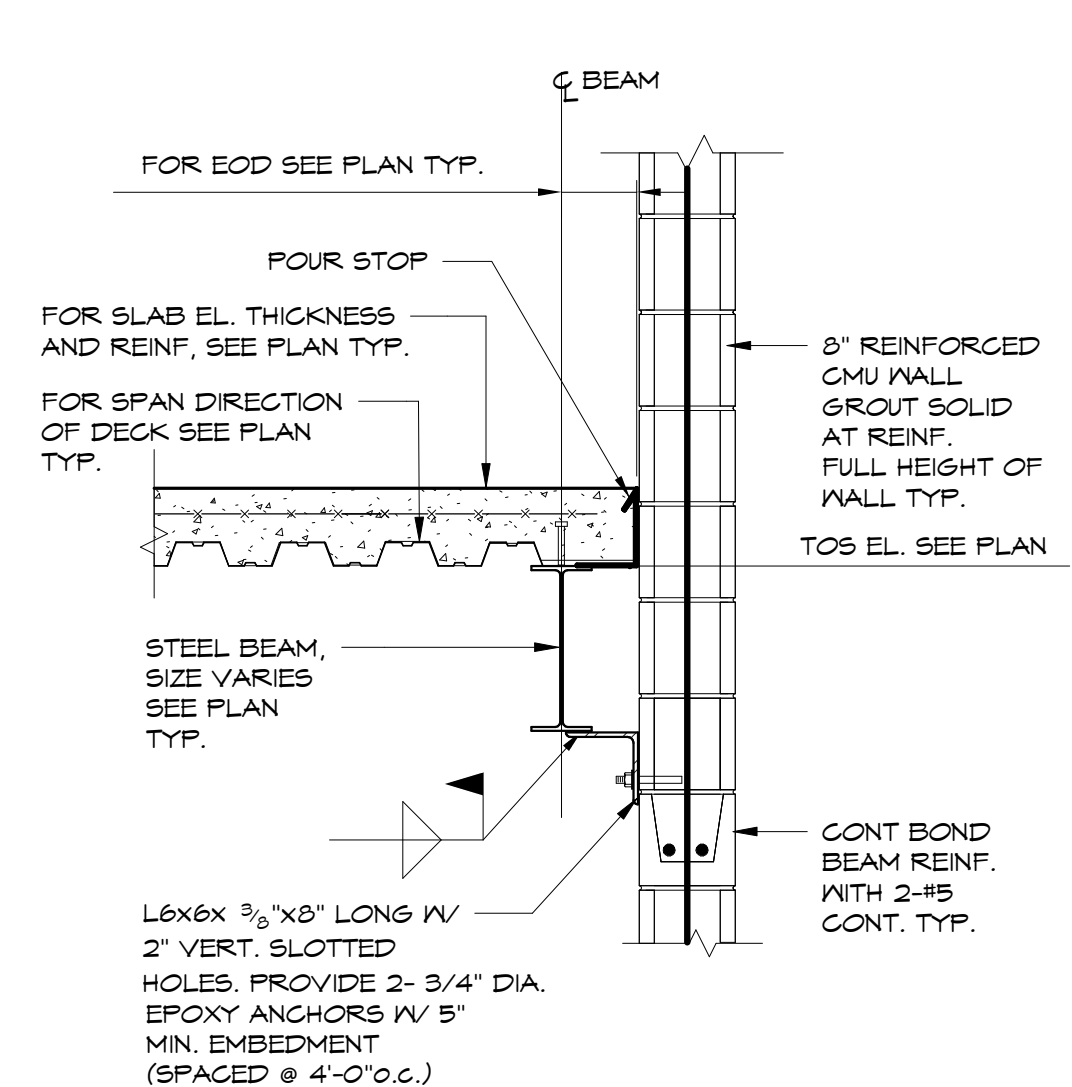
TYPICAL CONCRETE FLOOR EDGE DETAIL (COMPOSITE DECK)
SECTION 2
3/4" = 1'-0"



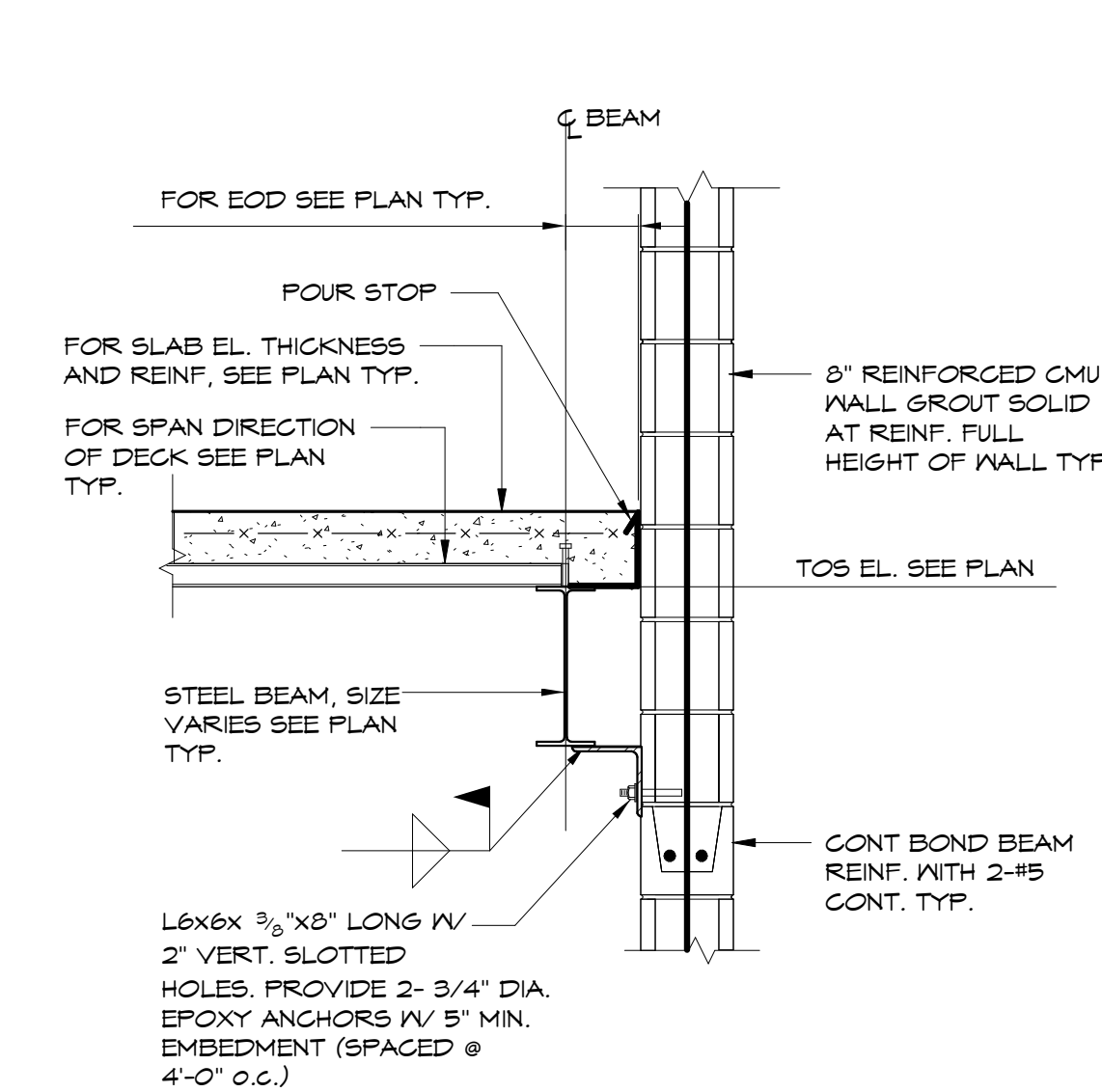
TYPICAL CONCRETE FLOOR EDGE DETAIL (COMPOSITE DECK)
SECTION 3
3/4" = 1'-0"



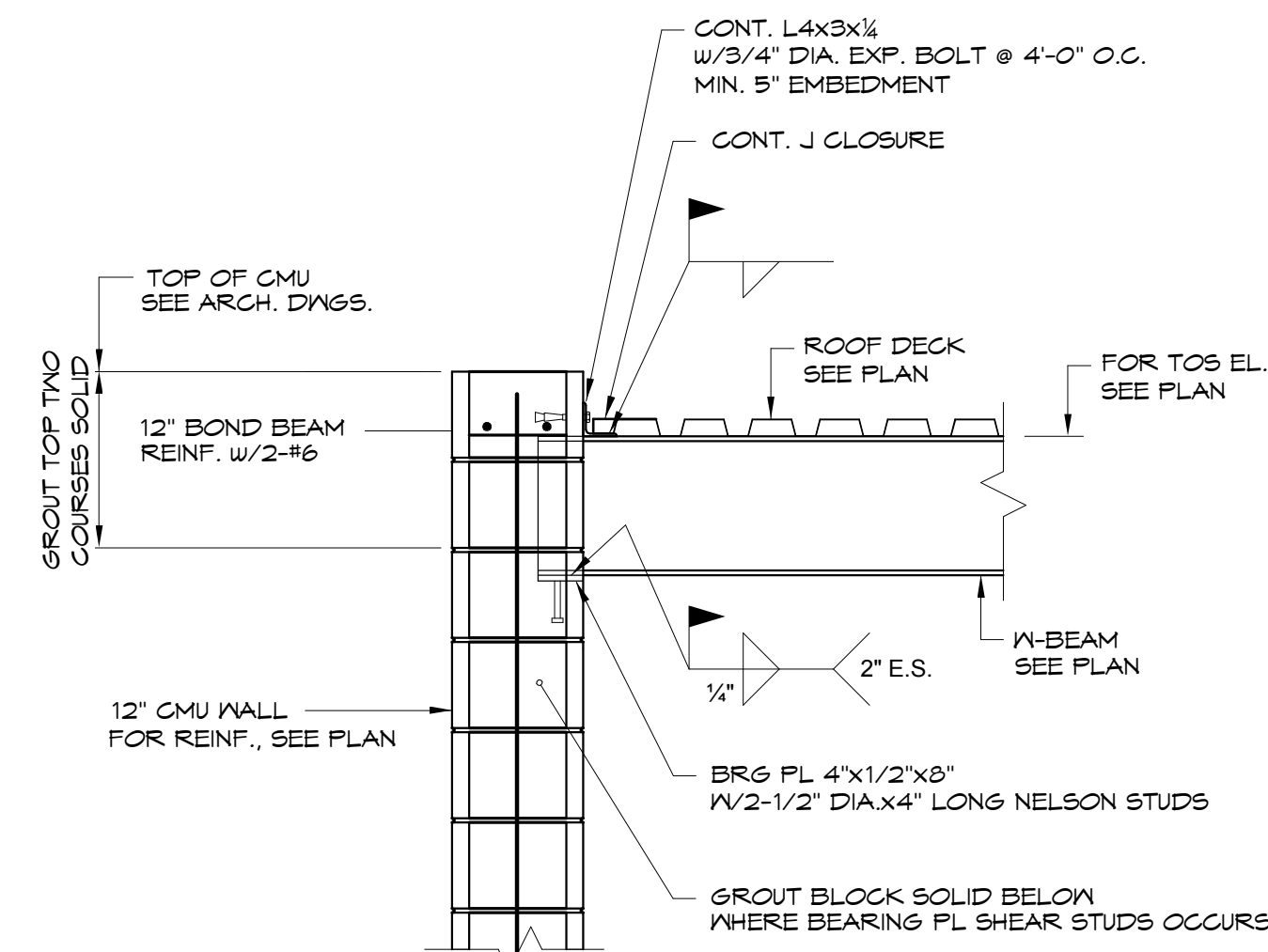
SECTION AT ELEVATOR SILL
3/4" = 1'-0"



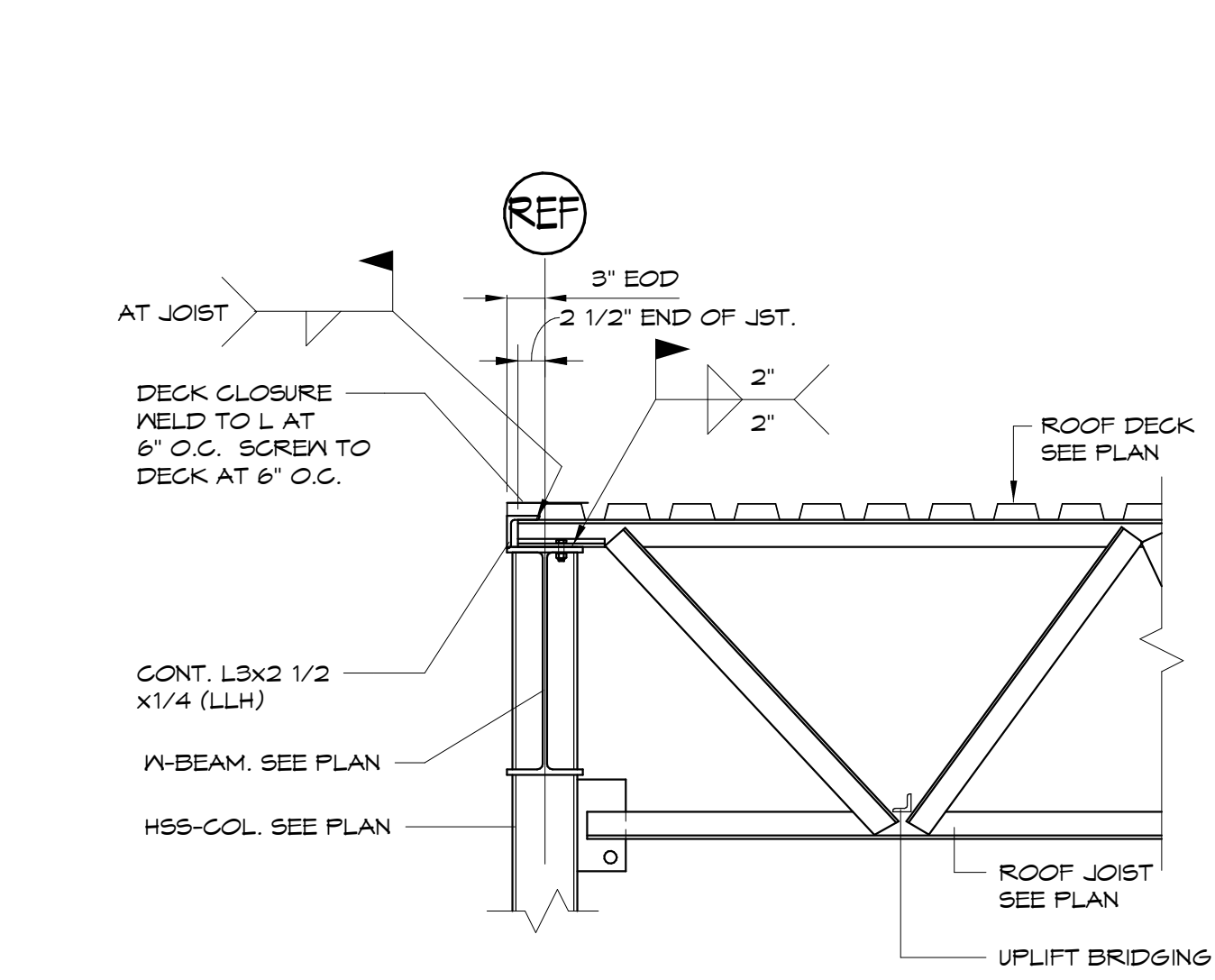
SECTION 5
3/4" = 1'-0"



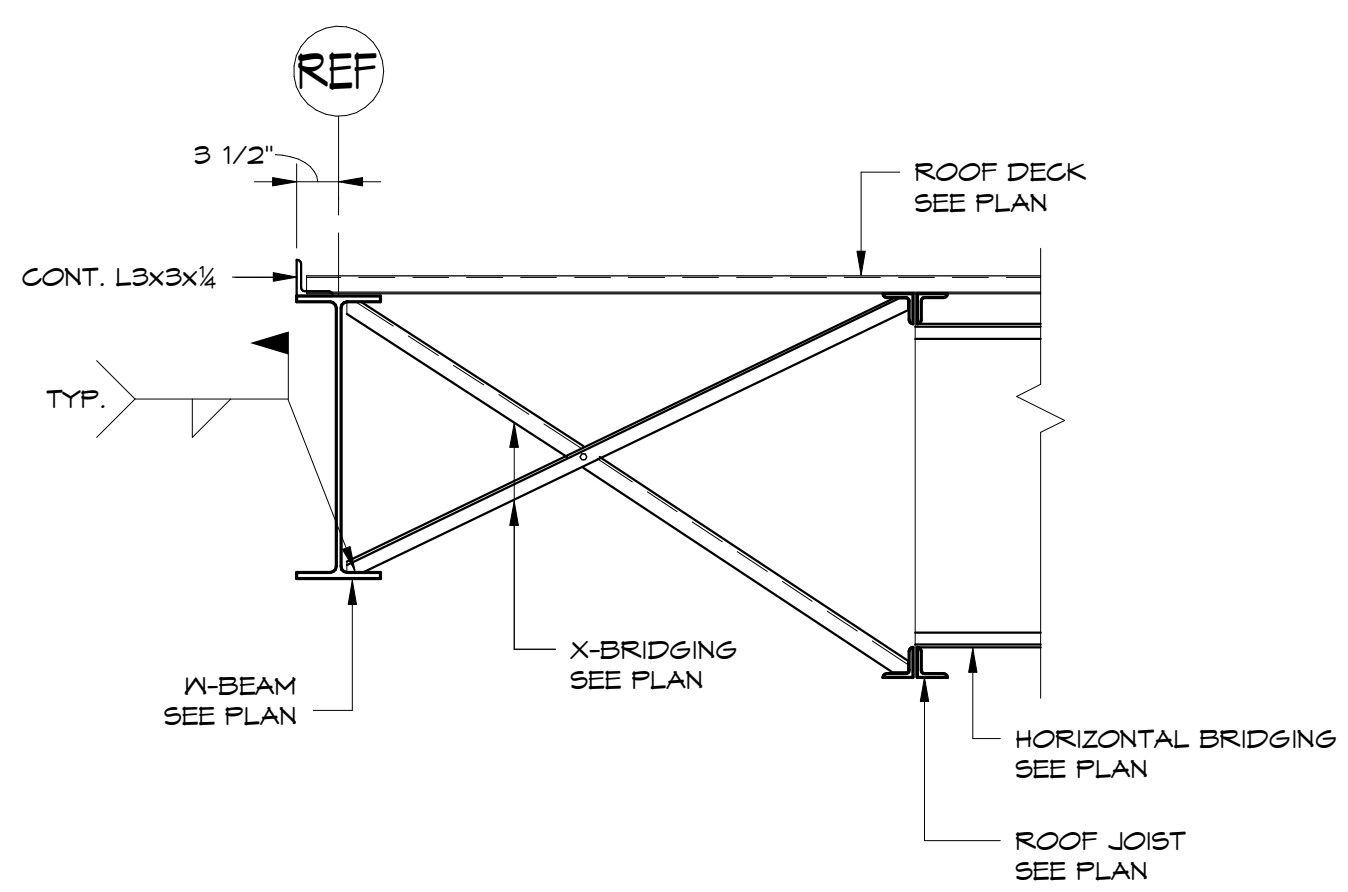
SECTION 6
3/4" = 1'-0"



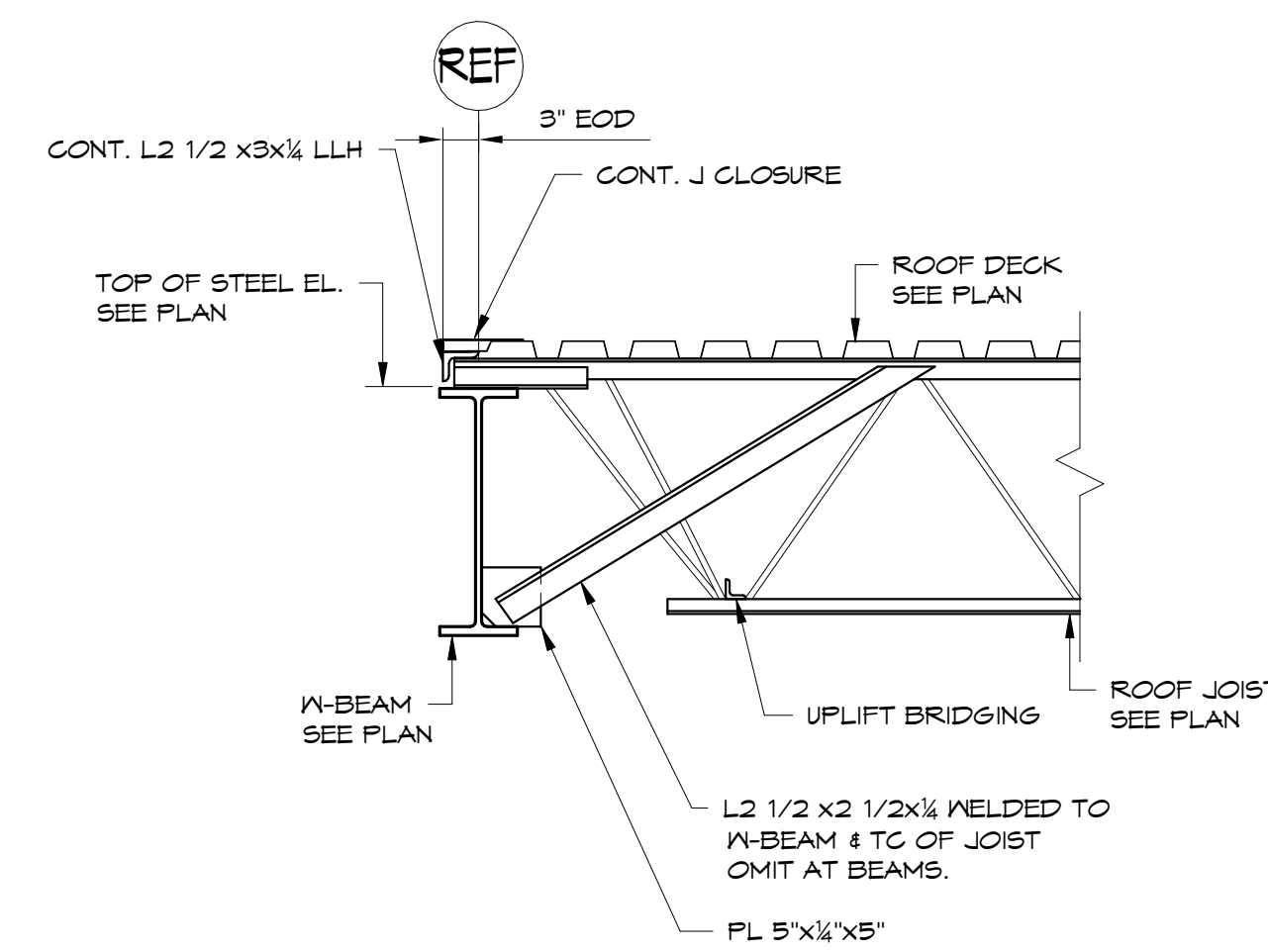
SECTION 7
3/4" = 1'-0"



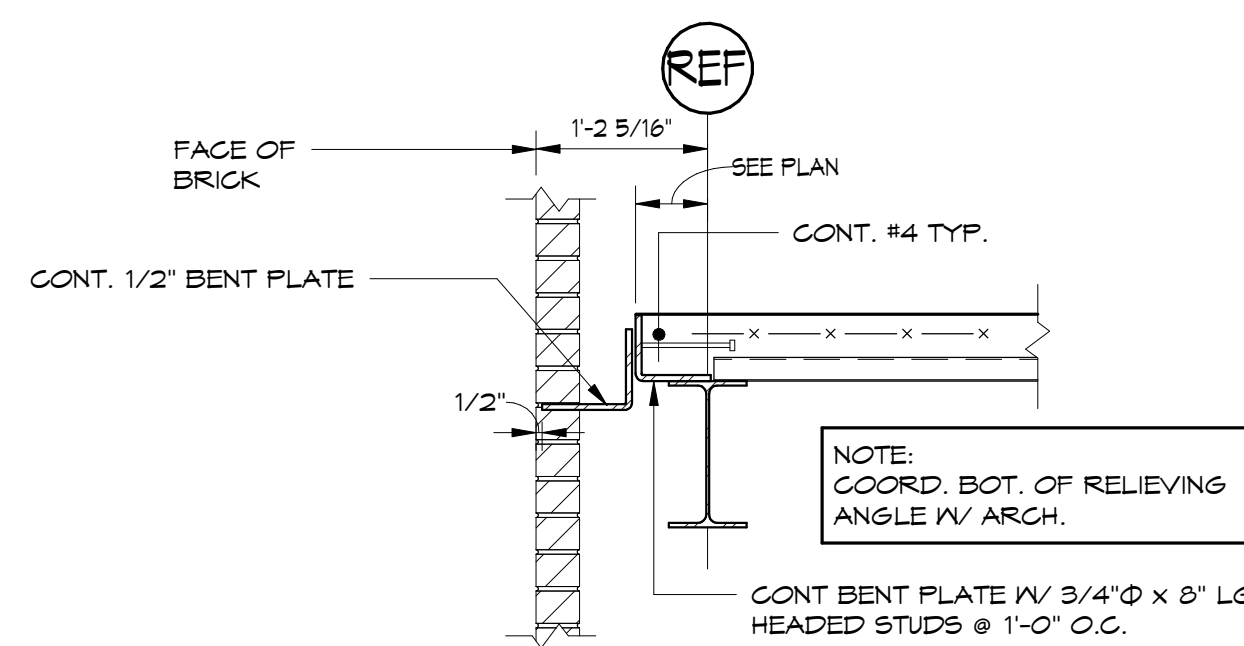
SECTION 8
3/4" = 1'-0"



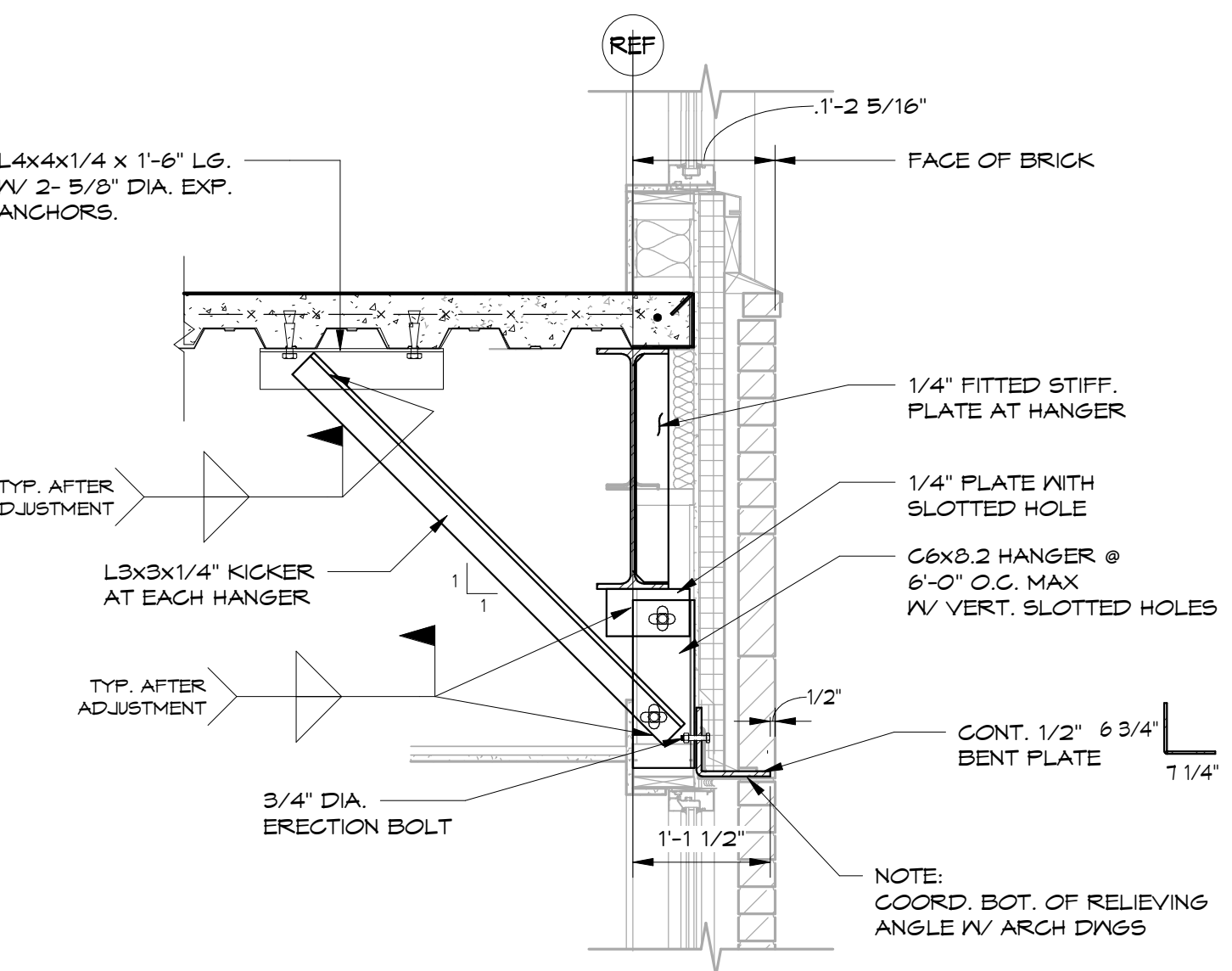
SECTION 9
3/4" = 1'-0"



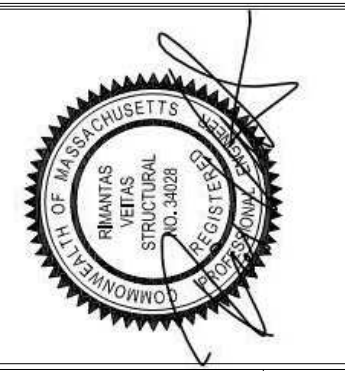
SECTION 10
3/4" = 1'-0"



SECTION 11 @ RELIEVING ANGLE
3/4" = 1'-0"



SECTION AT RELIEVING ANGLE
3/4" = 1'-0"



Prepared For:
BATEMAN PARTNERS, LLC
P.O. BOX 7486
Portland, ME 04112

Consulting Engineer:
VEITAS VEITAS engineers
68 Granite Street, Suite 101
Business: Manchester, 02814
Tel: (603) 886-7486 Fax: (603) 886-2005

Architect:
ARCHETYPE architects
48 Union Wharf Portland, Maine 04101
(207) 772-6022 Fax (207) 772-4056

Project:
16 MIDDLE STREET
MIDDLE STREET
PORTLAND, MAINE

Revisions:
01/15/16 ISSUED FOR FDN. PERMIT
06/03/16 ISSUED FOR BUILDING PERMIT

Date: 01/15/16
Scale:
STEEL SECTIONS & DETAILS

S5.01