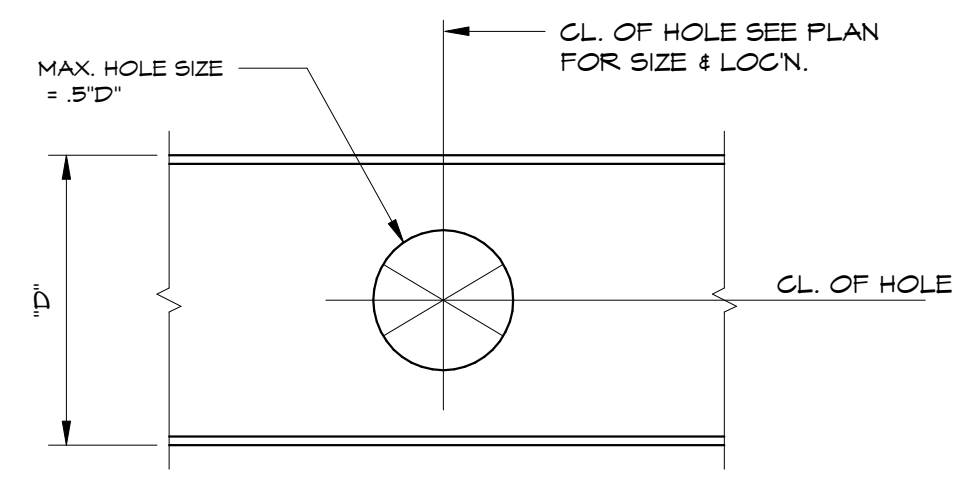
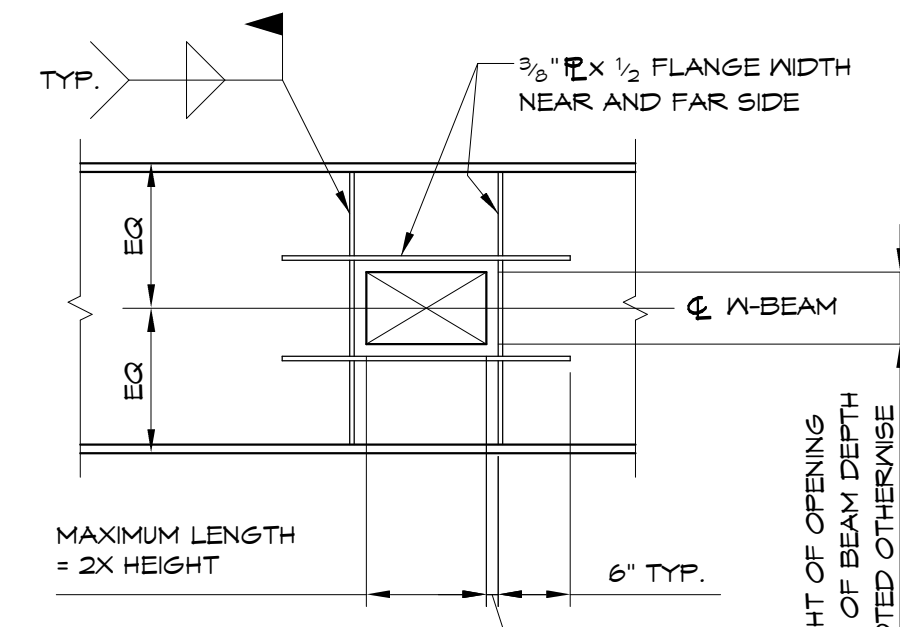


1 BRIDGING DETAIL AT STEEL JOIST
1/4" = 1'-0"



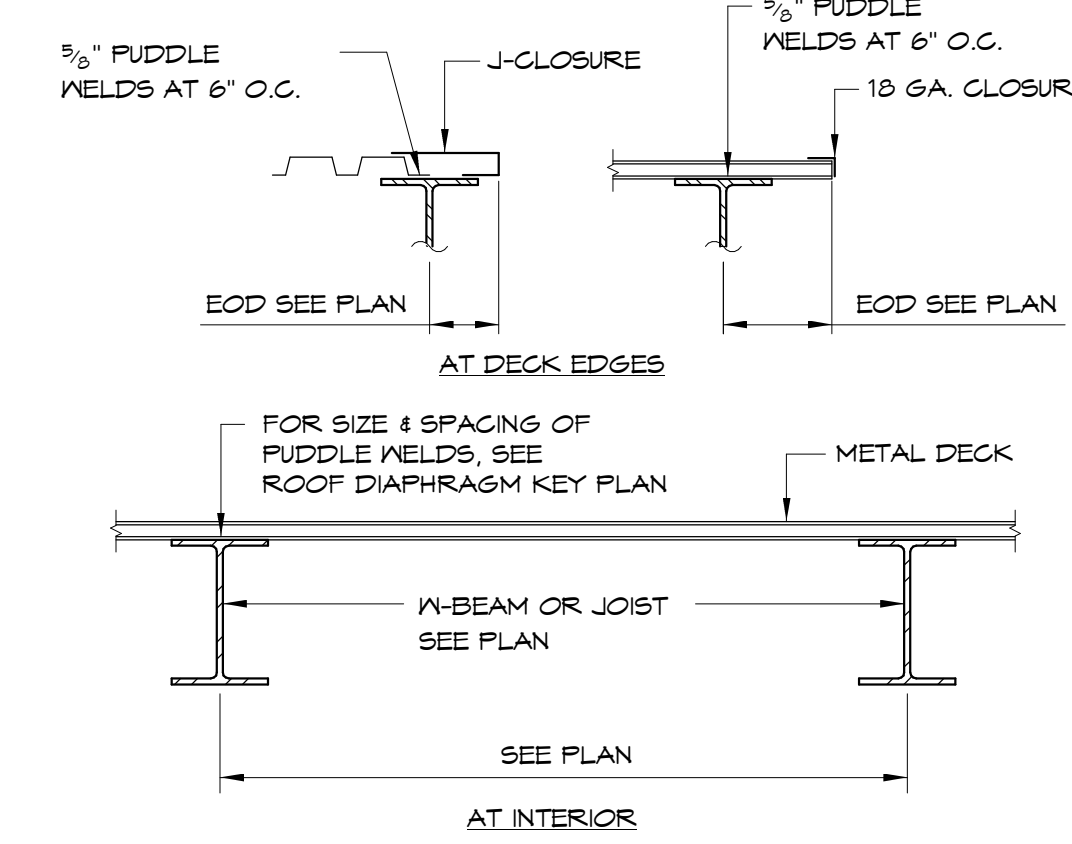
NOTE:
1. APPLIES ONLY TO OPENINGS IN THE MIDDLE THIRD OF BEAM DEPTH ("D").
2. OPENINGS CANNOT BE MADE WITHIN 2X"D" OR 10% OF SPAN FROM ENDS OF BEAM.

2 HOLE THRU BEAM WEB DETAIL
3/4" = 1'-0"

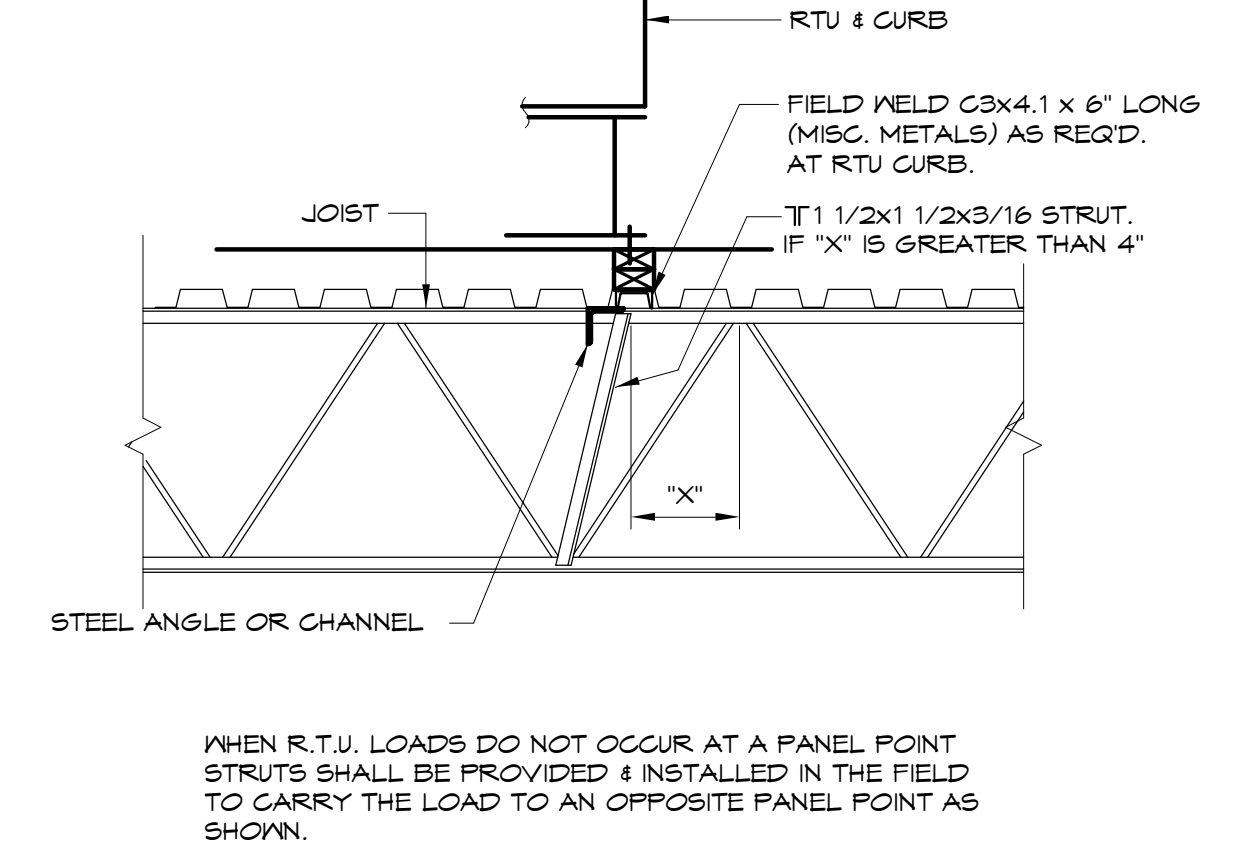


NOTES:
1. APPLIES ONLY TO OPENINGS IN THE MIDDLE THIRD OF BEAM SPAN.
2. OPENINGS CANNOT BE MADE AT ENDS OF BEAMS WITHOUT THE APPROVAL OF THE ENGINEER.

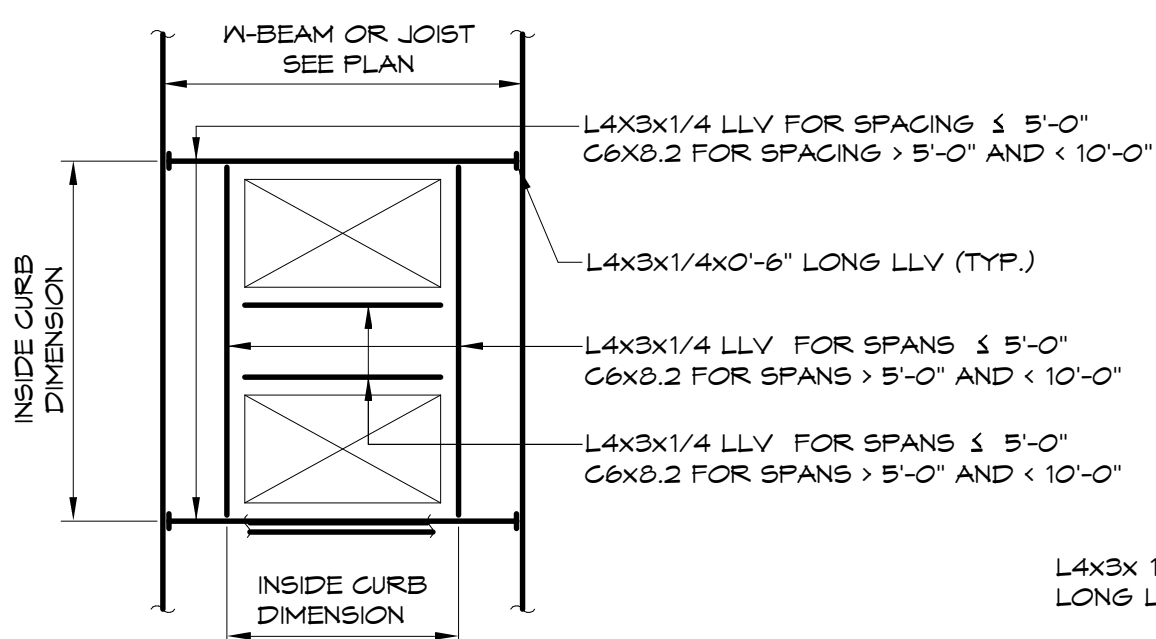
3 BEAM WEB OPENING REINFORCING DETAIL
3/4" = 1'-0"



4 ROOF CONSTRUCTION
3/4" = 1'-0"

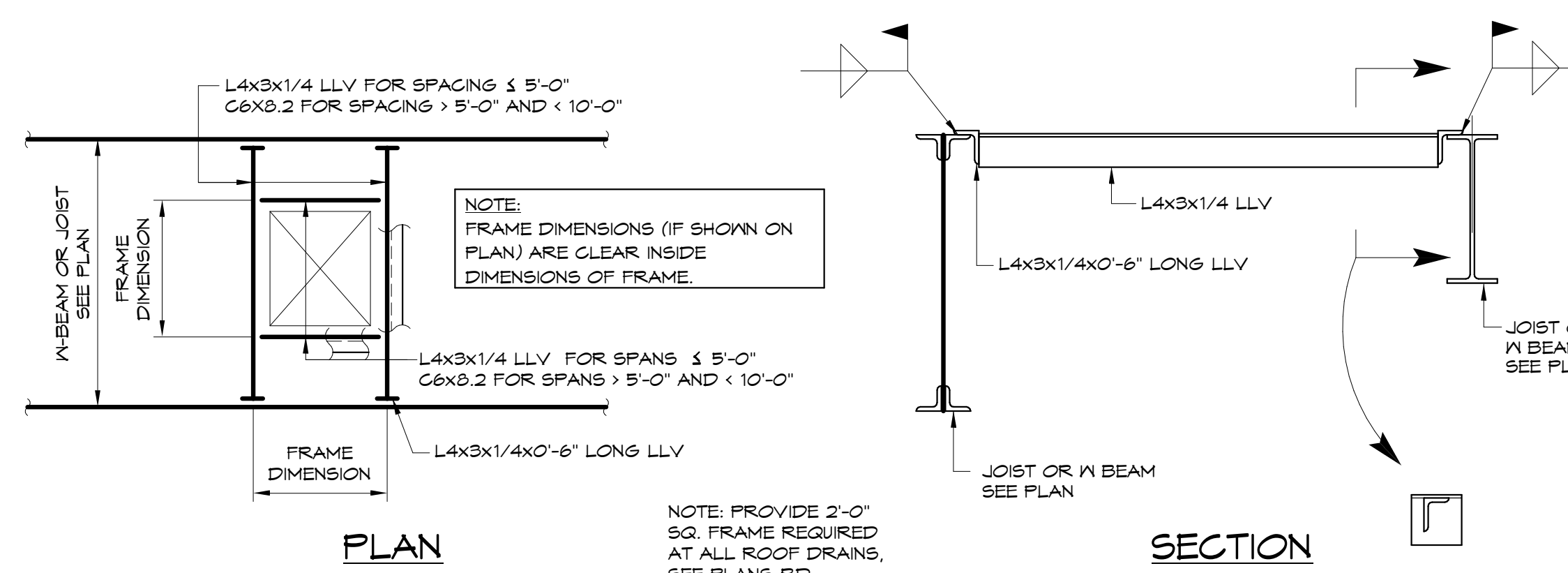


5 TYPICAL JOIST DETAIL UNDER RTU
3/4" = 1'-0"

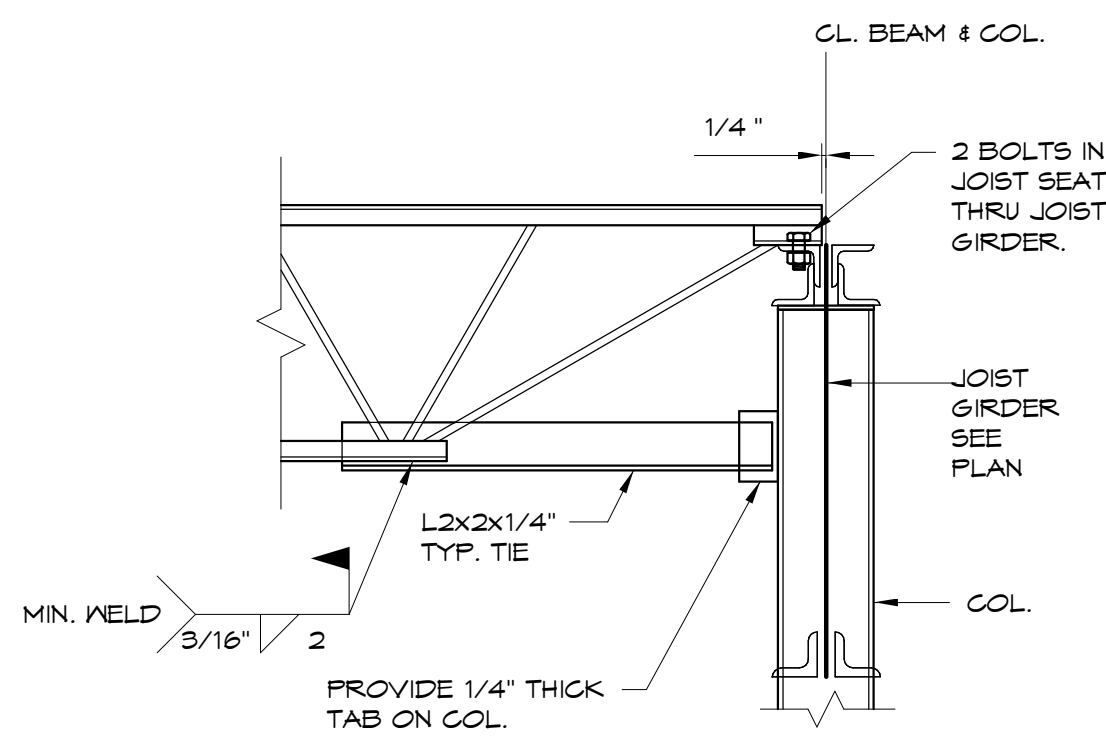


NOTES:
1. FINAL OVERALL FRAME SIZE TO BE COORDINATED BY THE MECH. CONTRACTOR & THE G.C.

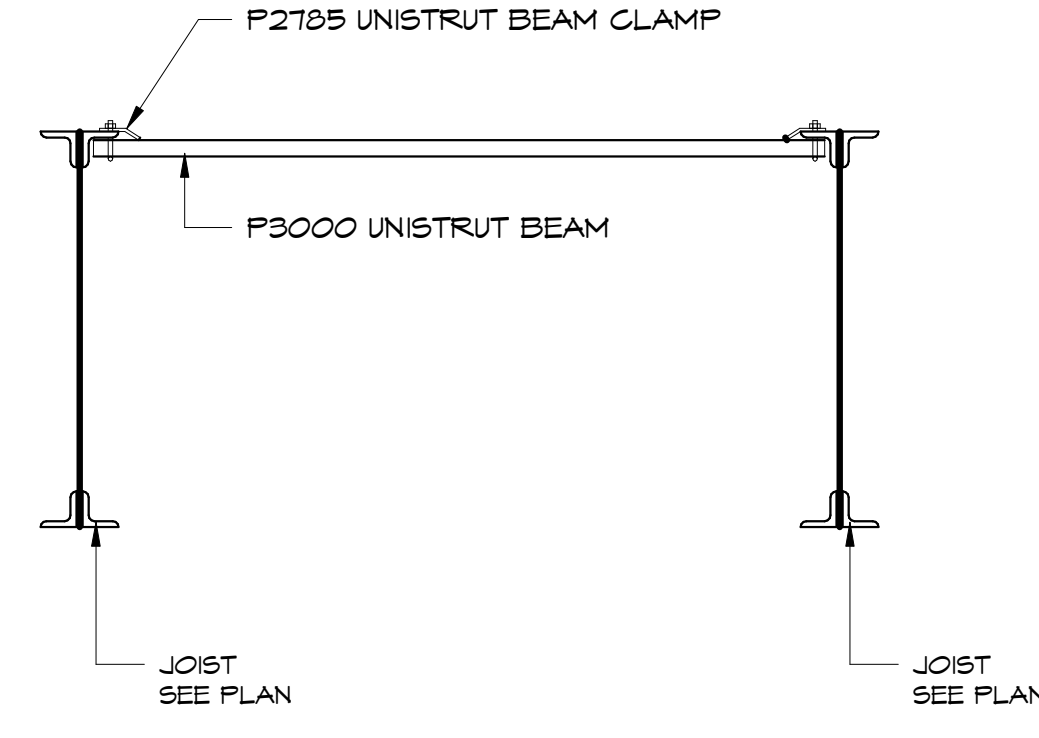
6 ROOF TOP UNIT FRAME DETAIL
3/8" = 1'-0"



7 TYPICAL ROOF DRAIN & FAN OPENING FRAMING DETAIL
3/4" = 1'-0"



8 TYPICAL TIE JOIST DETAIL
3/4" = 1'-0"



9 TYPICAL UTILITY HANGER SUPPORT
3/4" = 1'-0"



Prepared For:
BATEMAN PARTNERS, LLC
P.O. BOX 7486
Portland, ME 04112

Consulting Engineer:
VEITAS ENGINEERS
638 Granite Street, Suite 1014
Business, Scarborough, ME 04114
Tel: (207) 866-2800 Fax: (207) 866-2805

Architect:
ARCHETYPE architects
48 Union Wharf Portland, Maine 04101
(207) 772-6022 Fax (207) 772-4056

Project:
16 MIDDLE STREET
MIDDLE STREET
PORTLAND, MAINE

Revisions:
01/15/16 ISSUED FOR FDN. PERMIT
06/03/16 ISSUED FOR BUILDING PERMIT

Date: 01/15/16
Scale:
TYPICAL DETAILS

S2.06