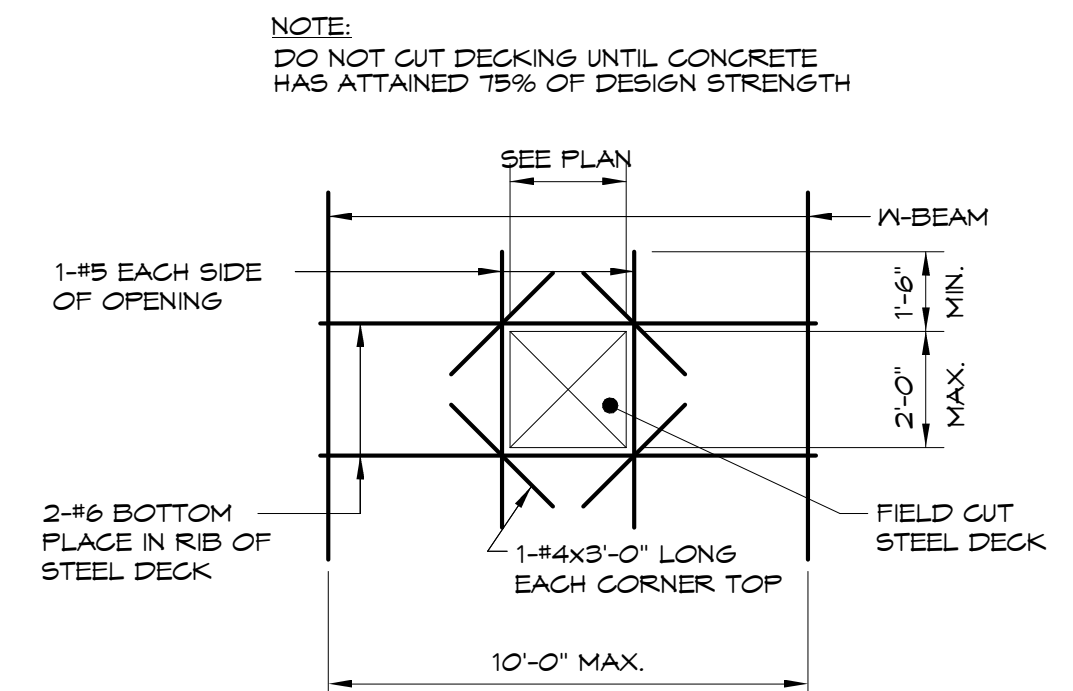
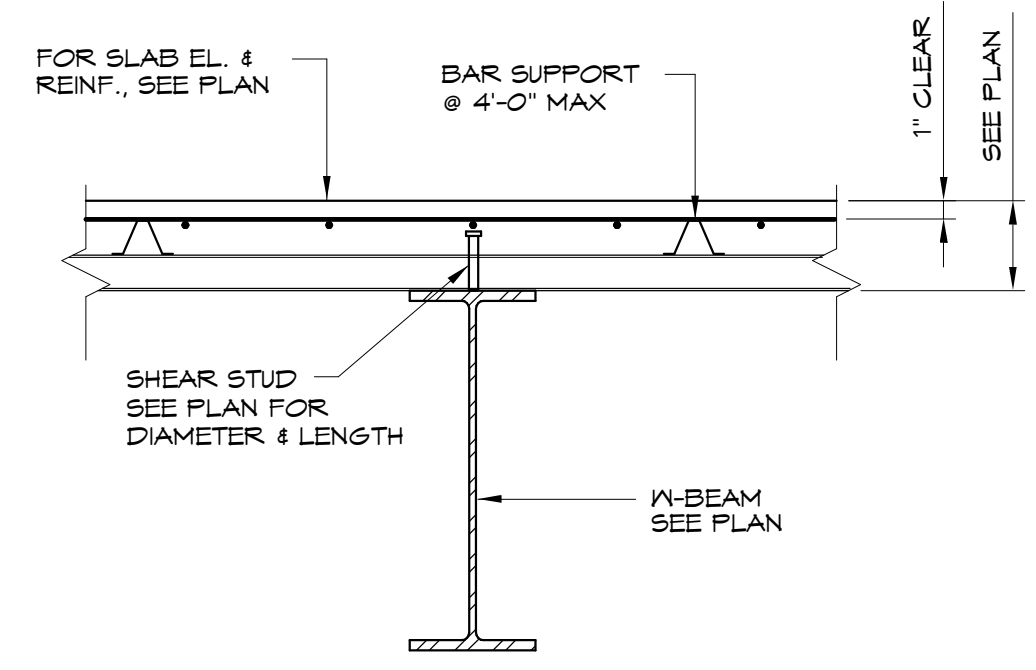


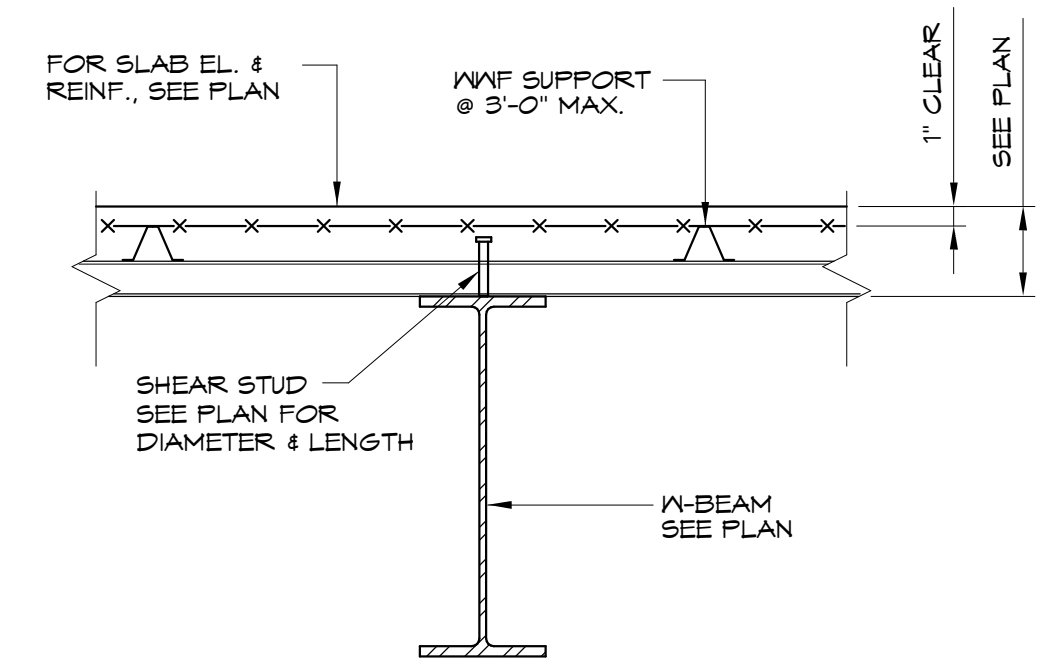
1 TYP. FRAMED OPNG. AT CONCRETE ON METAL DECK
3/4" = 1'-0"



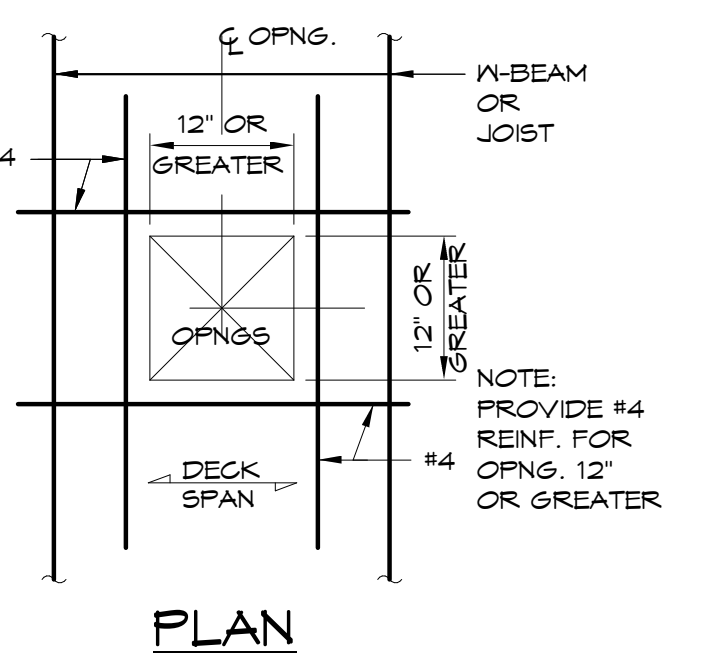
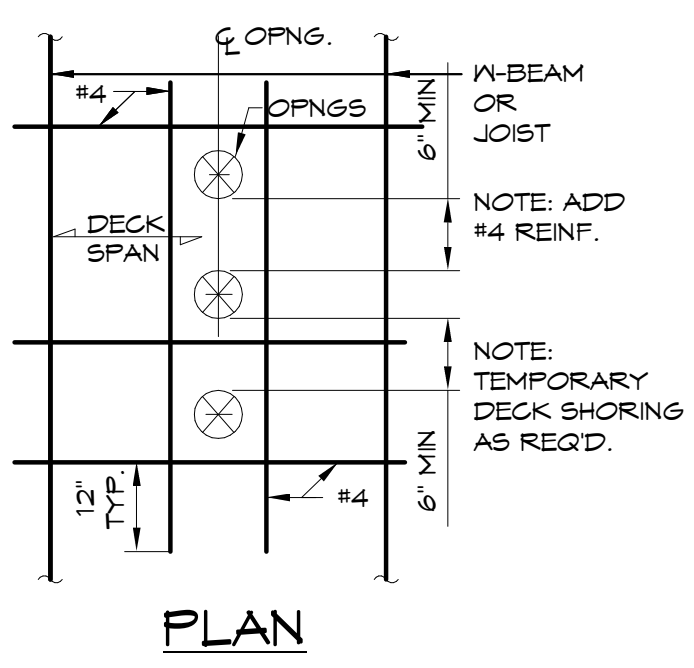
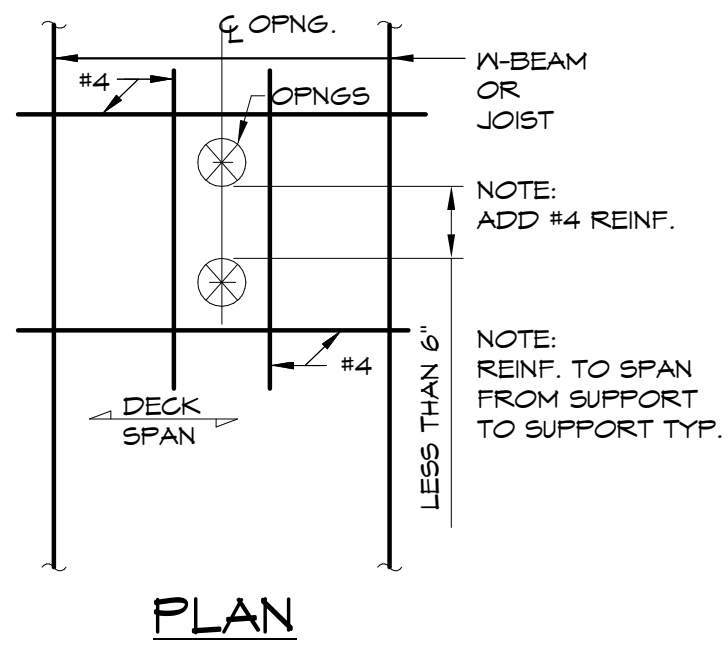
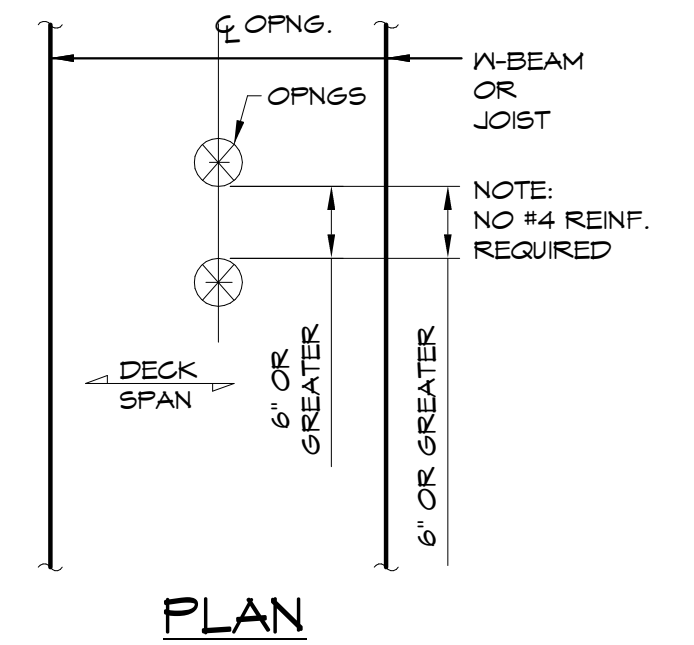
2 FLOOR OPENING IN CONCRETE ON STEEL DECK
1/4" = 1'-0"



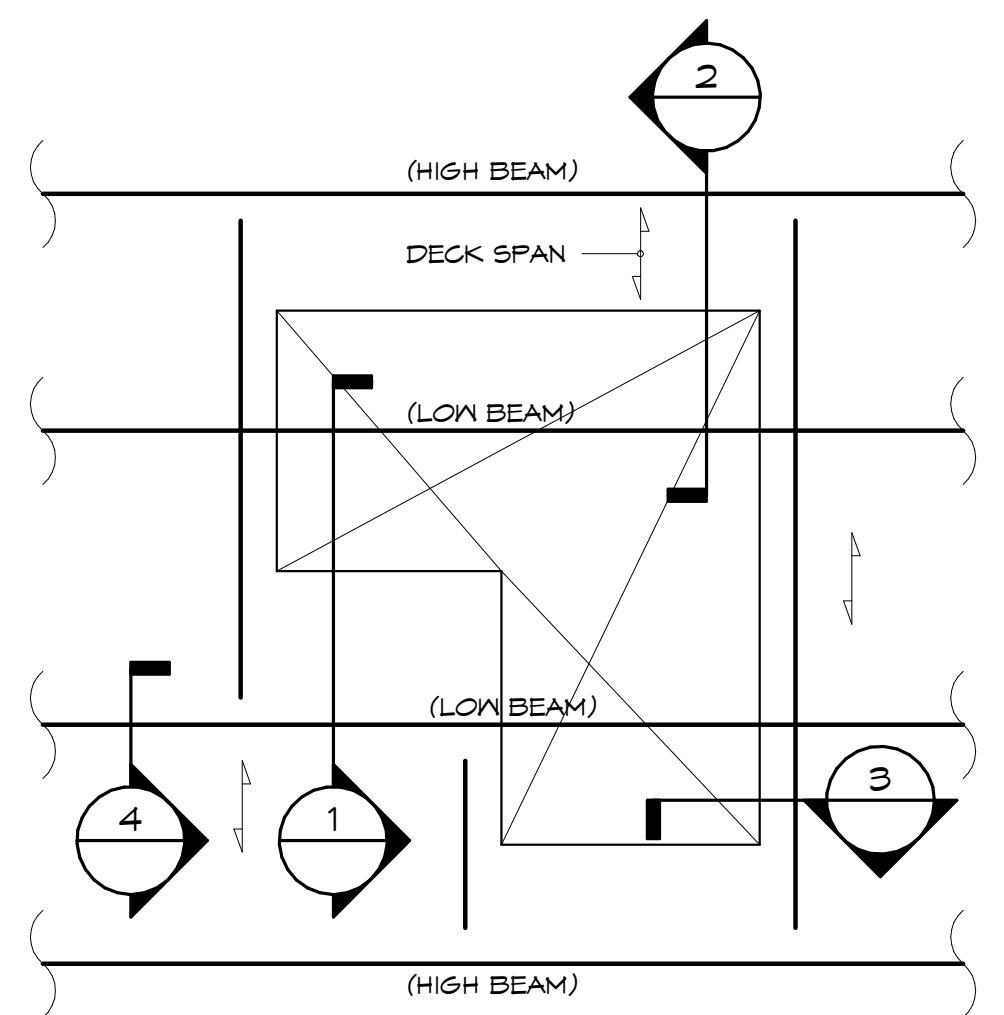
3 TYPICAL SHEAR STUD DETAIL (REBAR)
3/4" = 1'-0"



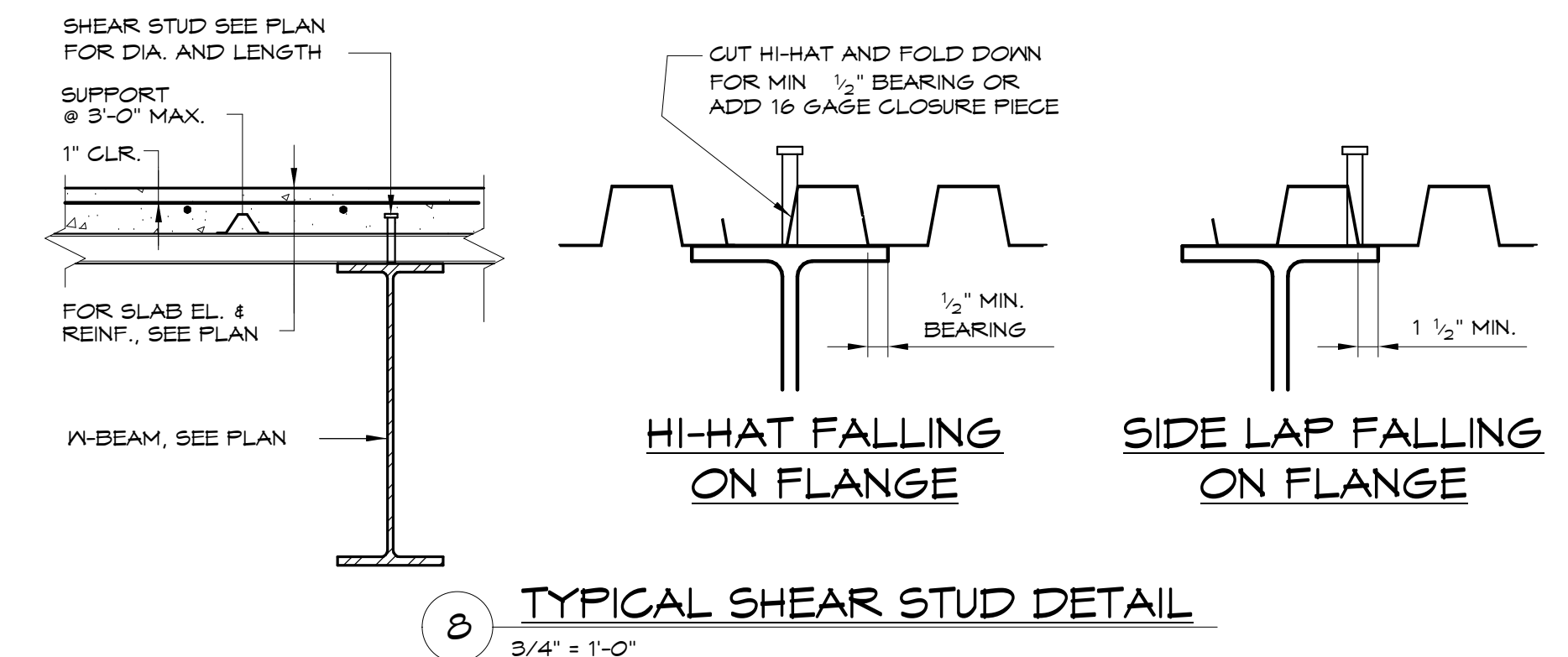
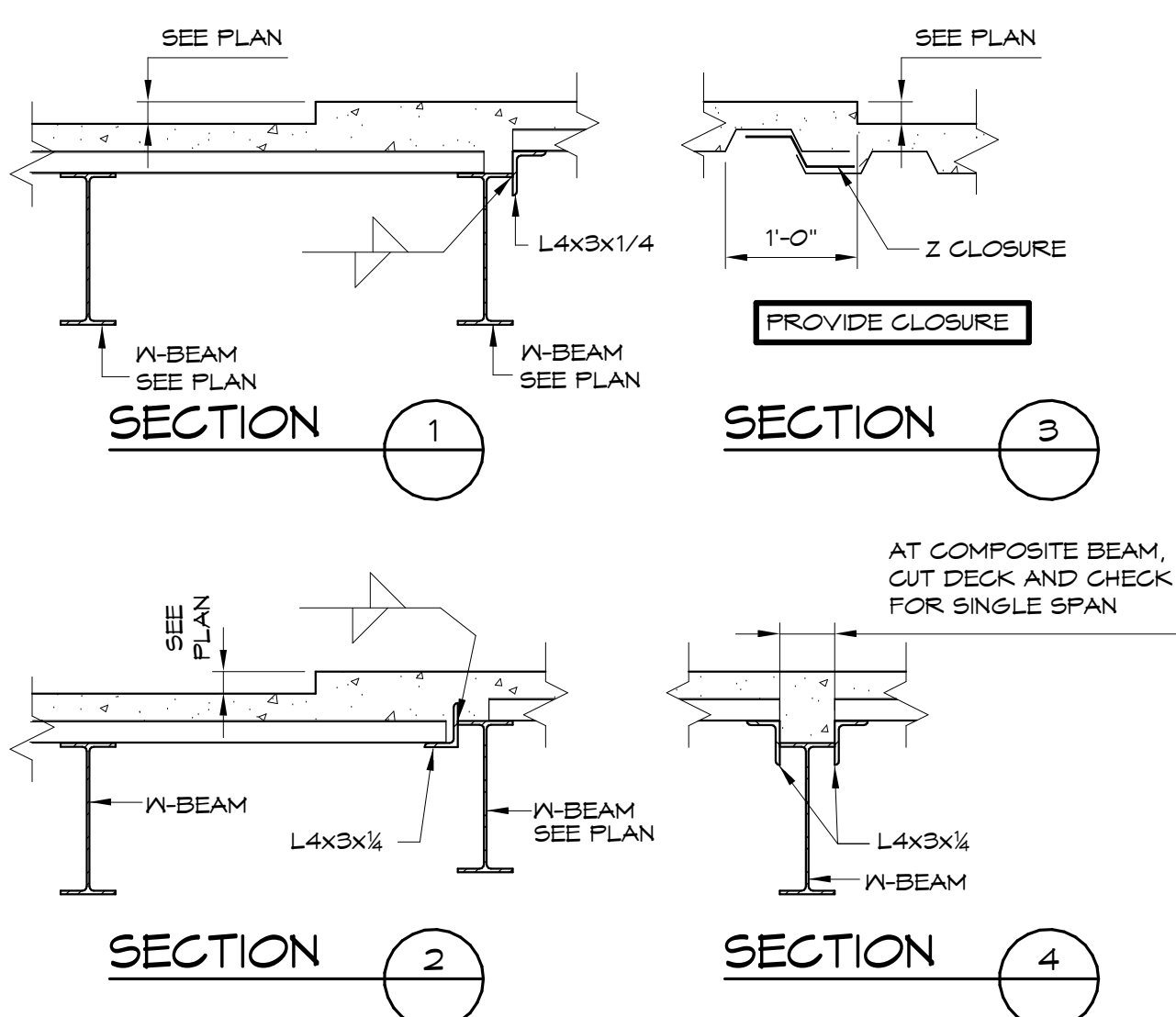
4 TYPICAL SHEAR STUD DETAIL (W/WF)
3/4" = 1'-0"



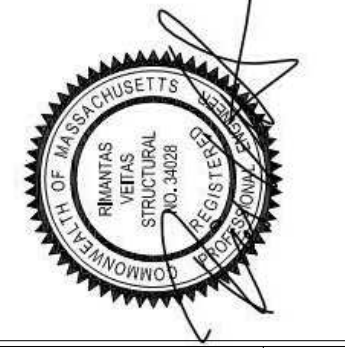
6 TYPICAL SLEEVE OPENING REINFORCING DETAIL IN CONCRETE ON STEEL DECK
3/4" = 1'-0"



7 DETAILS OF STEEL DECK AT CHANGE IN SLAB ELEVATION
3/4" = 1'-0"



8 TYPICAL SHEAR STUD DETAIL
3/4" = 1'-0"



BATEMAN PARTNERS, LLC
P.O. BOX 7486
Portland, ME 04112

Prepared For:

VEITAS ENGINEERS
engineers
638 Granite Street, Suite 101
Business: Manchester, 02814
Tel: (603) 886-2800 Fax: (603) 886-2805

Consulting Engineer:

ARCHETYPE architects
48 Union Wharf Portland, Maine 04101
(207) 772-6022 Fax (207) 772-4056

Architect:

16 MIDDLE STREET
MIDDLE STREET
PORTLAND, MAINE

Project:

Revisions:
01/15/16 ISSUED FOR FDN. PERMIT
06/03/16 ISSUED FOR BUILDING PERMIT

Date: 01/15/16
Scale:
TYPICAL DETAILS

S2.05