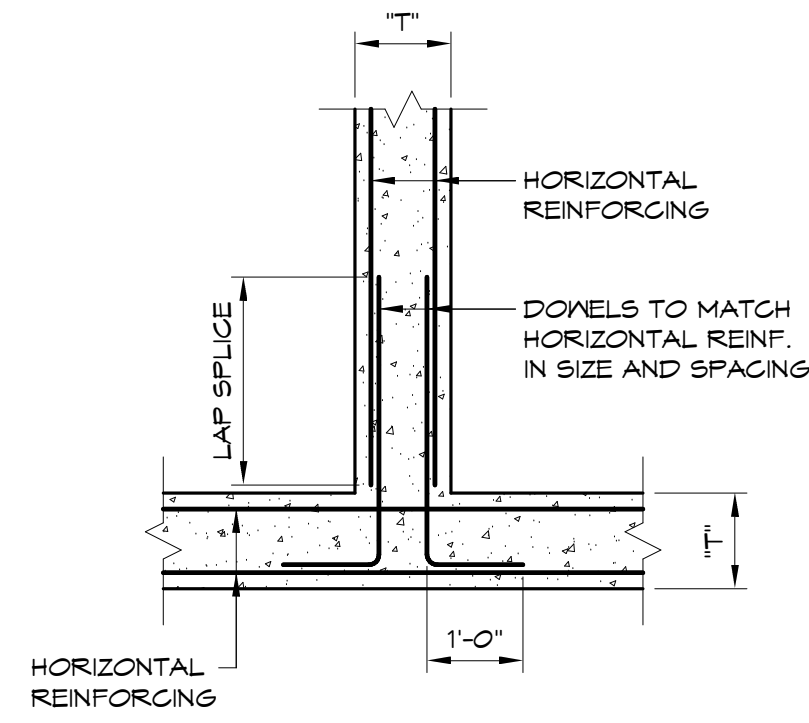
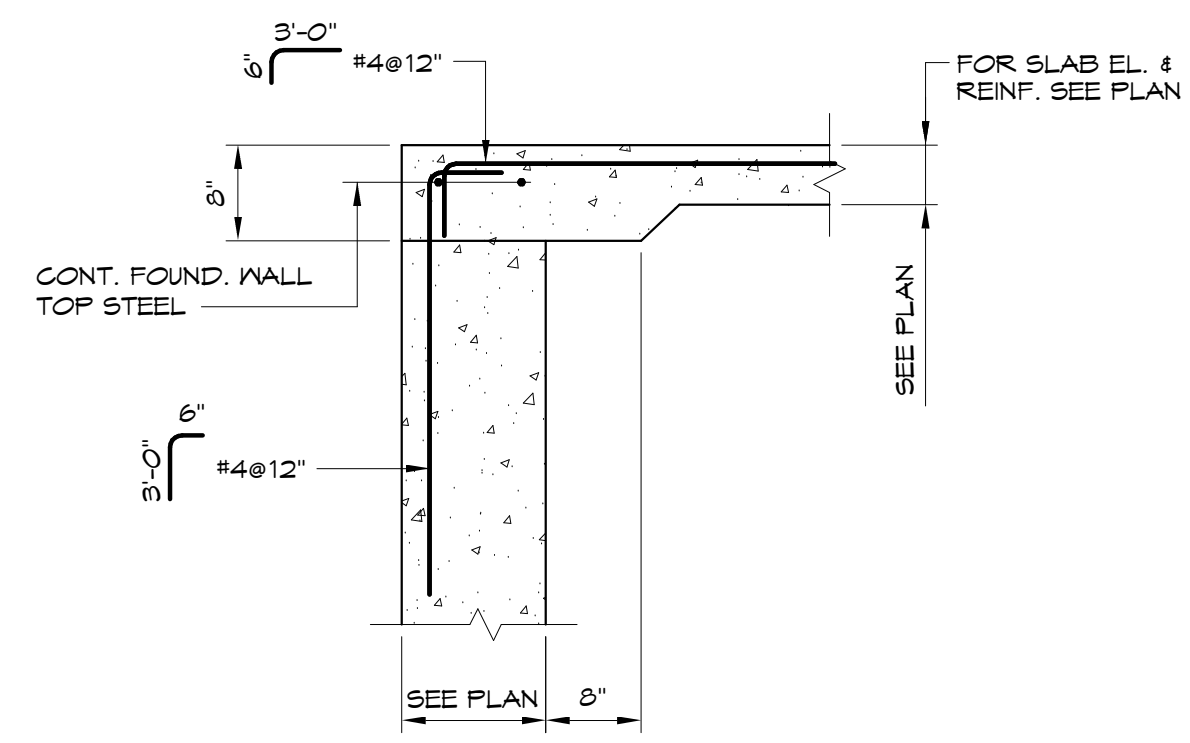


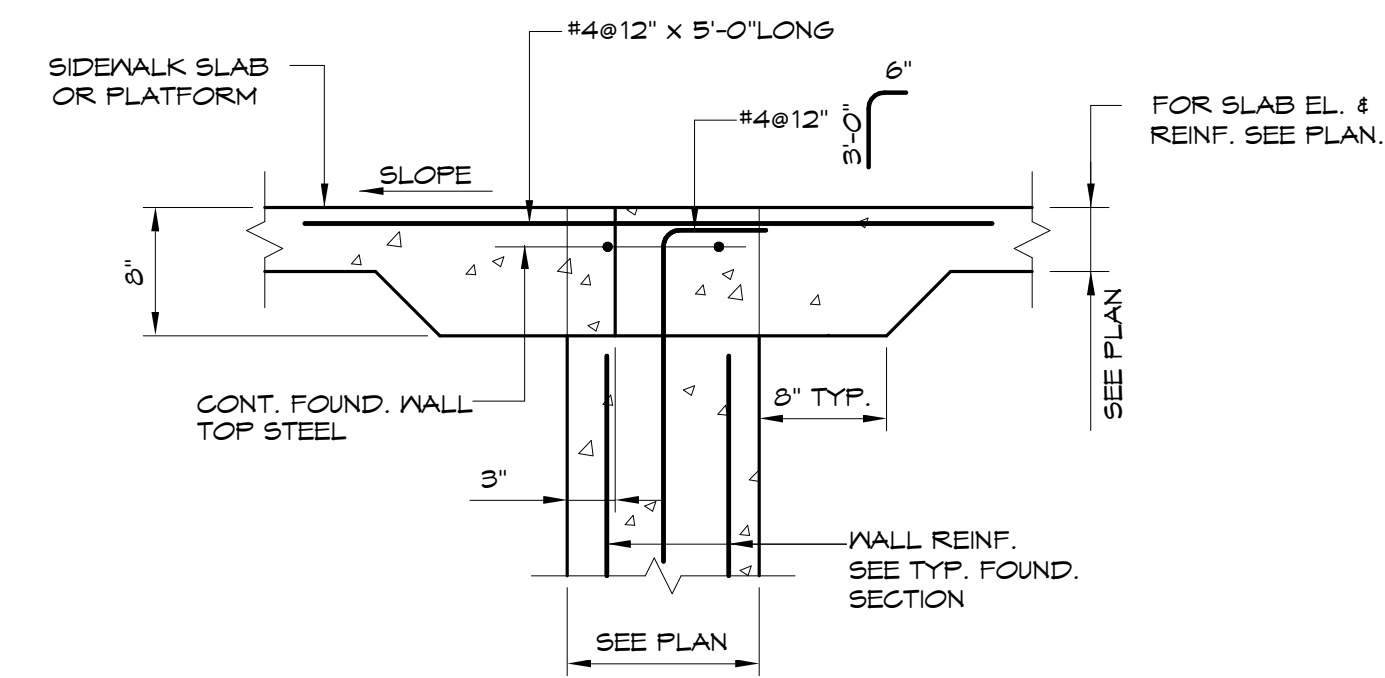
**A HORIZONTAL REINFORCING OF CONCRETE WALLS**  
1/2" = 1'-0"



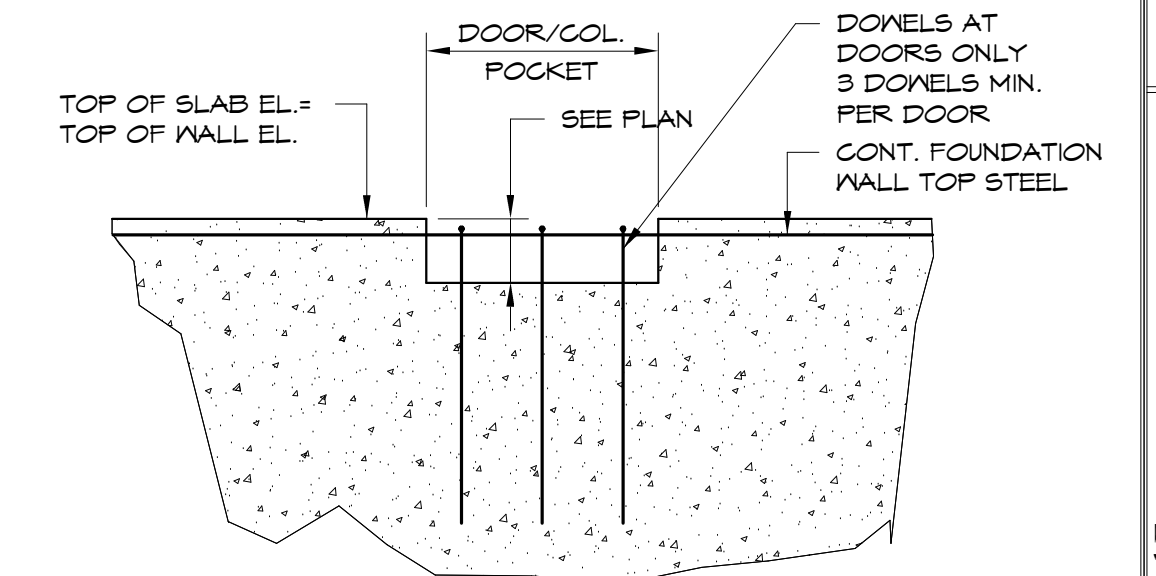
**B HORIZONTAL REINFORCING OF CONCRETE WALLS**  
1/2" = 1'-0"



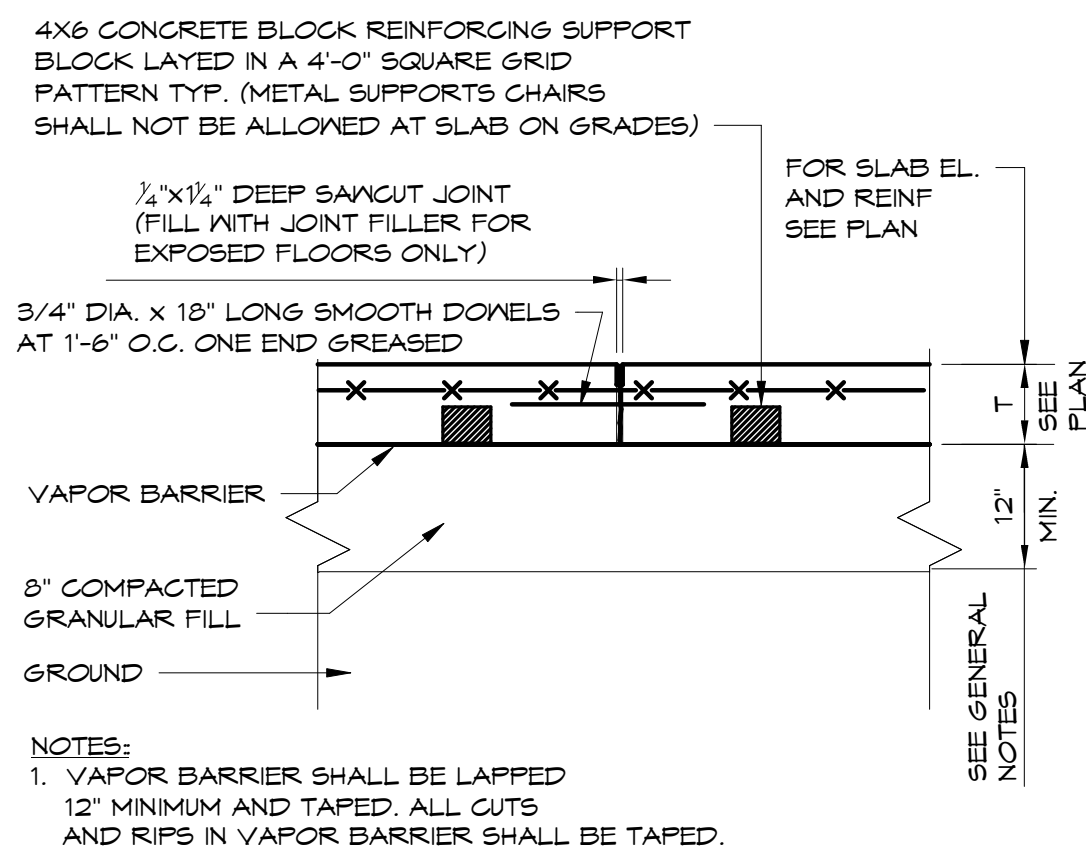
**C TYPICAL WALL SECTION AT DOORWAY**  
TOW ELEVATION = TOP OF SLAB ELEVATION  
3/4" = 1'-0"



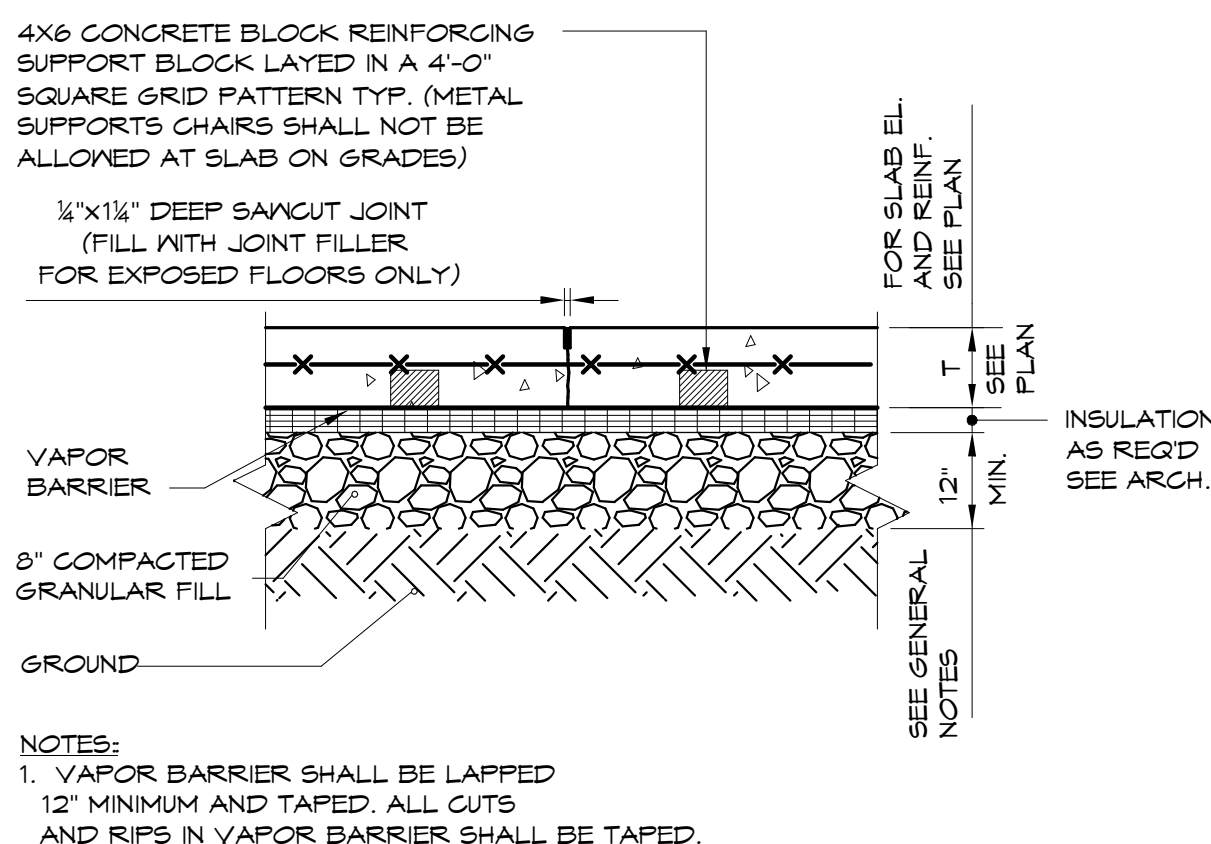
**D TYPICAL WALL SECTION AT DOORWAY**  
W/SIDEWALK OR PLATFORM  
1" = 1'-0"



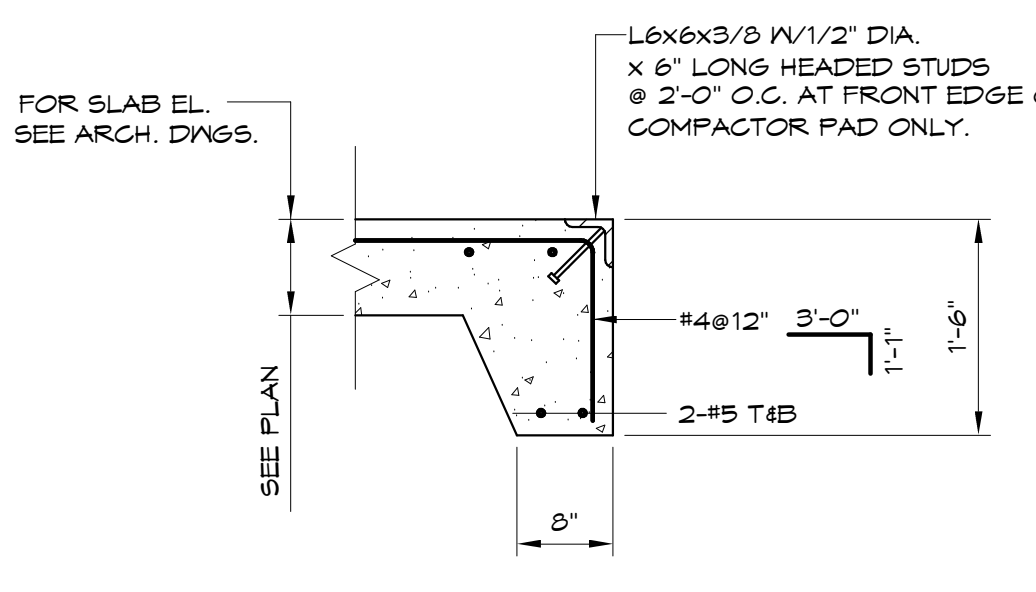
**E TYPICAL ELEVATION AT DOORS**  
NOTE: REFER TO "TYPICAL WALL SECTION AT DOORWAY"  
1/2" = 1'-0"



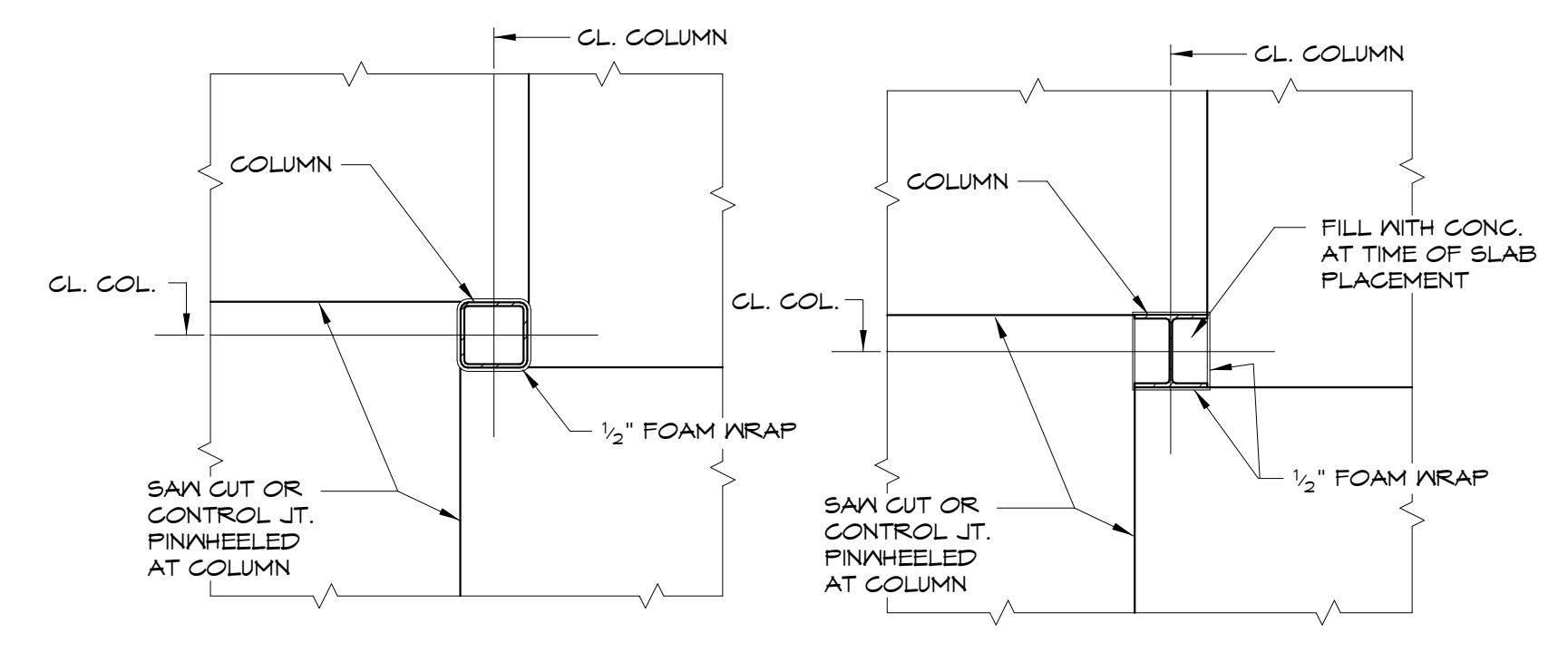
**F TYPICAL SLAB ON GRADE CONSTRUCTION JOINT DETAIL**  
3/4" = 1'-0"



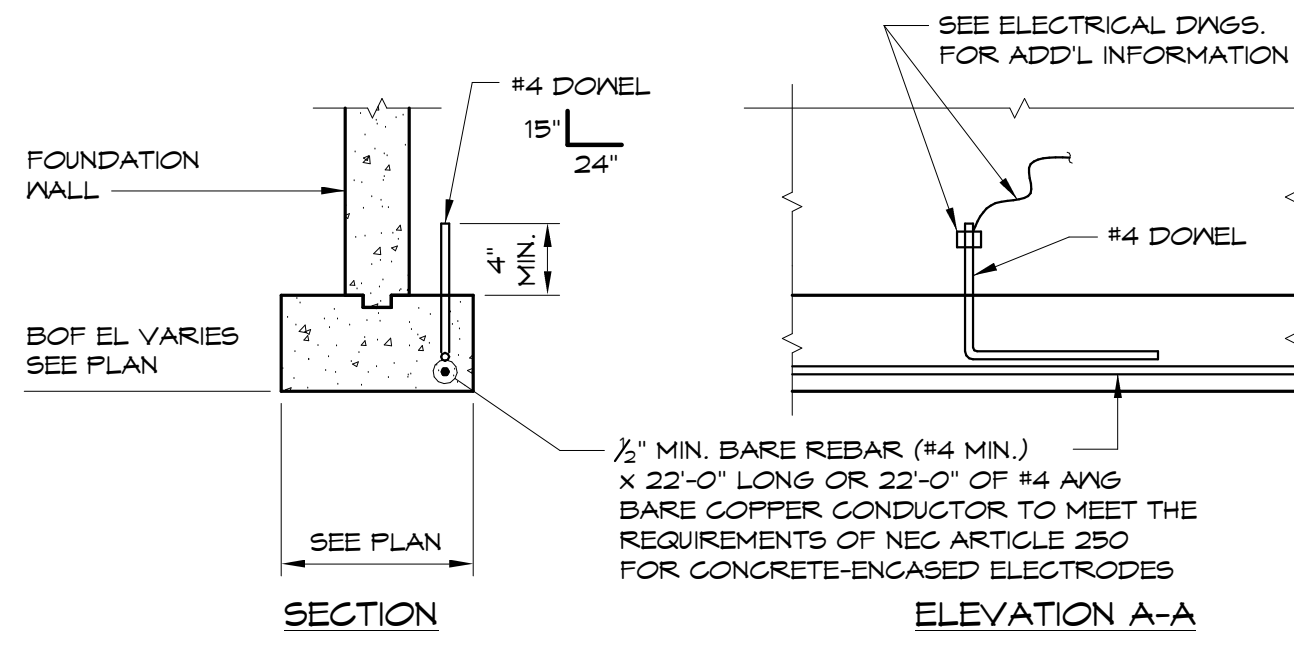
**G TYPICAL SAW CUT CONTROL JOINT DETAIL**  
3/4" = 1'-0"



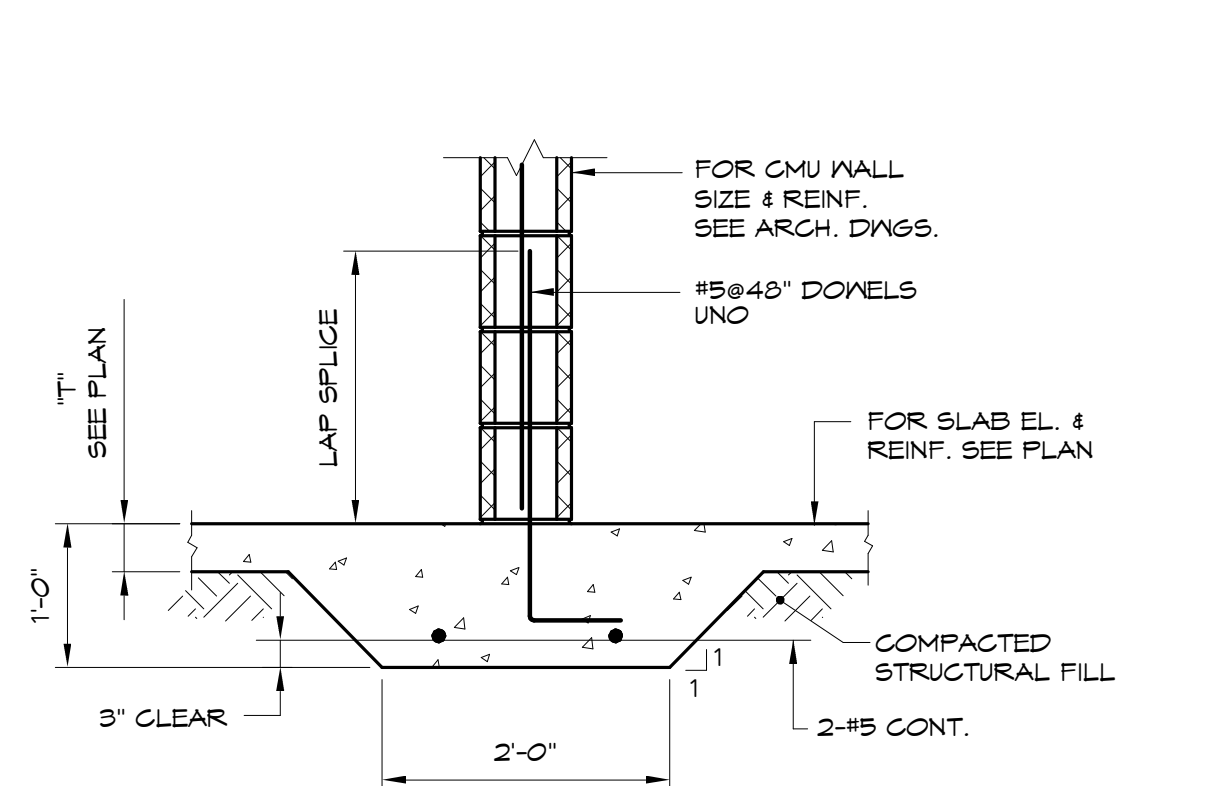
**H TYPICAL EXTERIOR PAD EDGE DETAIL**  
3/4" = 1'-0"



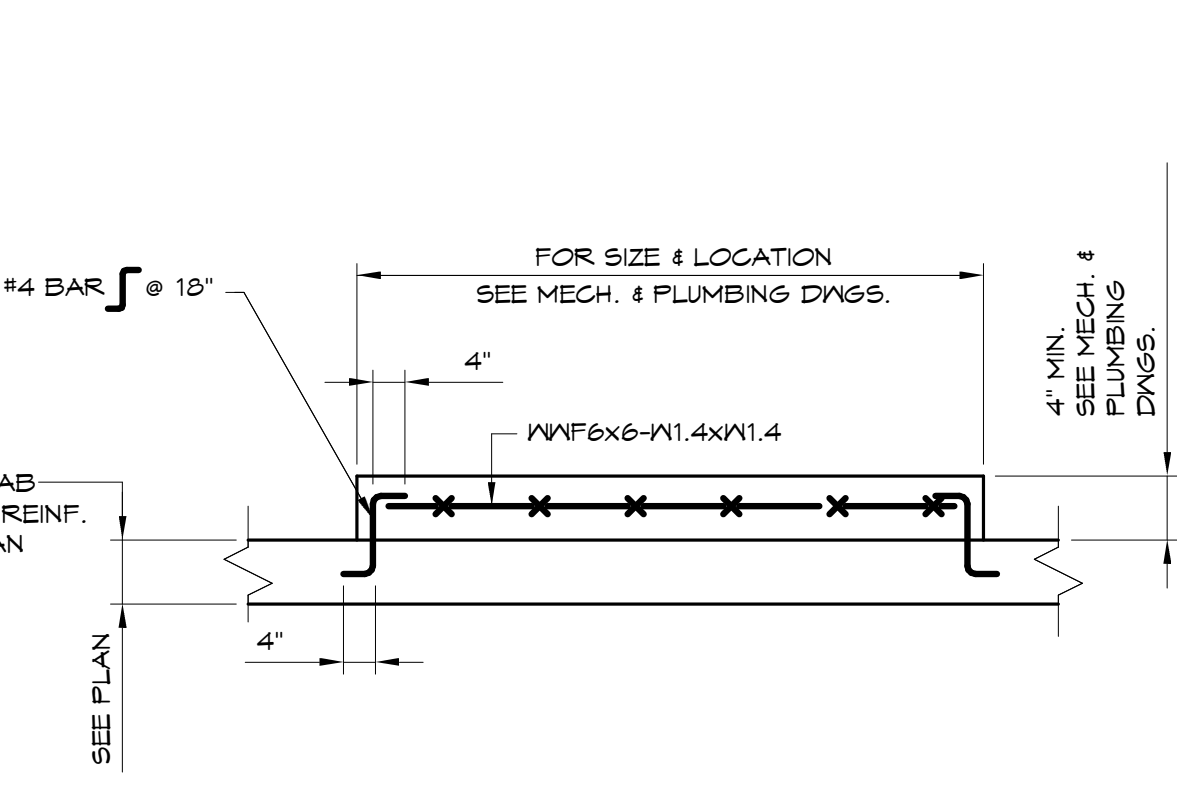
**J HSS COLUMN ISOLATION JOINT DETAIL AT COLUMNS**  
1/2" = 1'-0"



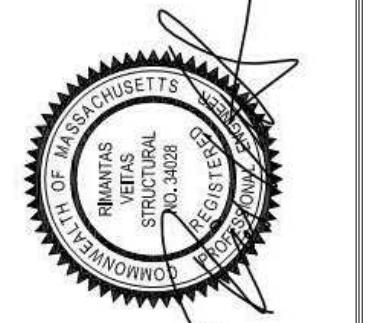
**K CONCRETE ENCASED ELECTRODE**  
1/2" = 1'-0"



**L CONTINUOUS FOOTING FOR NON-BEARING WALLS**  
3/4" = 1'-0"



**M TYPICAL MECHANICAL EQUIPMENT PAD**  
1/2" = 1'-0"

  
**BATEMAN PARTNERS, LLC**  
 PARTNERS, LLC  
 P.O. BOX 7486  
 Portland, ME 04112

Prepared For: **VEITAS ENGINEERS**  
 Consulting Engineer: **VEITAS ENGINEERS**  
 68 Granite Street, Suite 101  
 Business: Manchester, 02194  
 Tel: (603) 886-7486 Fax: (603) 886-2006

Architect: **ARCHETYPE architects**  
 48 Union Wharf Portland, Maine 04101  
 (207) 772-6022 Fax (207) 772-4056

Project: **16 MIDDLE STREET**  
 MIDDLE STREET  
 PORTLAND, MAINE

Revisions:  
 01/15/16 ISSUED FOR FDN. PERMIT  
 06/03/16 ISSUED FOR BUILDING PERMIT

Date: **01/15/16**  
 Scale:  
**TYPICAL DETAILS**

S2.02