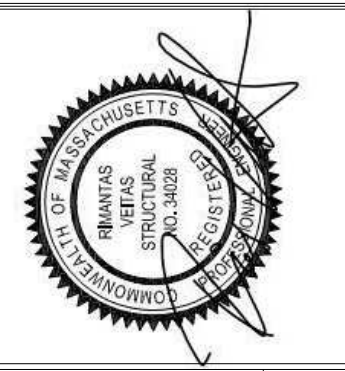


NOTES:
1. FOR ADDITIONAL NOTES AND INFORMATION
SEE DRAWING S1.02.



Prepared For:
BATEMAN PARTNERS, LLC
P.O. BOX 7486
Portland, ME 04112

Consulting Engineer:
VEITAS ENGINEERS
638 Granite Street, Suite 101
Business, Scarborough, ME 04101
Tel: (207) 746-2800 Fax: (207) 746-2805

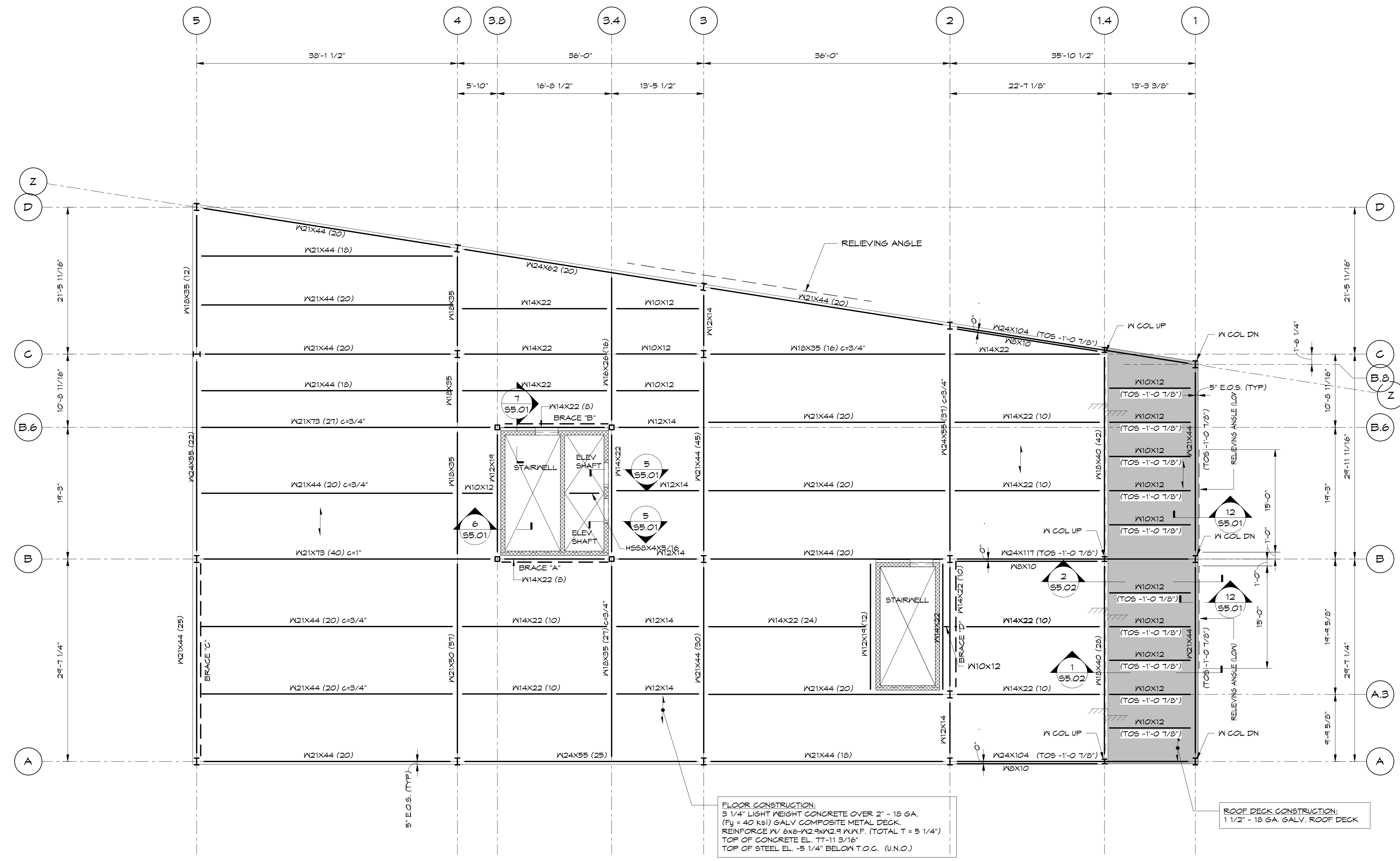
Architect:
ARCHETYPE architects
48 Union Wharf Portland, Maine 04101
(207) 772-6022 Fax (207) 772-4056

Project:
16 MIDDLE STREET
MIDDLE STREET
PORTLAND, MAINE

Revisions:
01/15/16 ISSUED FOR FDN. PERMIT
06/03/16 ISSUED FOR BUILDING PERMIT

Date: 01/15/16
Scale:
5th FLOOR FRAMING PLAN

S1.05



1 5th FLOOR FRAMING PLAN
1/8" = 1'-0"

