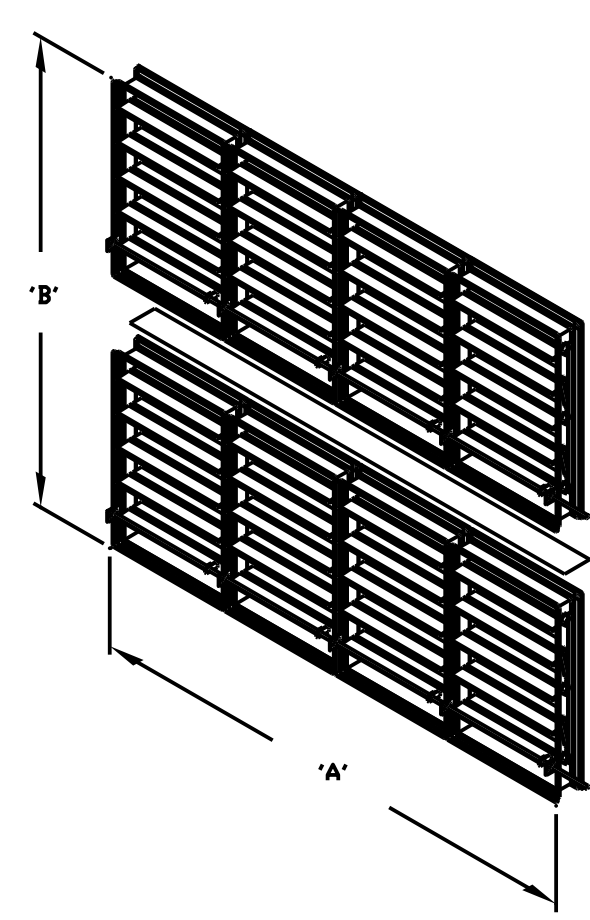


**General Mechanical Notes:**  
 1. All packaged rooftop AC units are Trane, Lennox, or equal, 7 1/2 - 8 1/2 ton, gas-fired with economizers, 3000 cfm each, variable air volume. Multiple zones will be required with variable air volume boxes.  
 2. Supply air ductwork shall be insulated with 2" thick fiberglass ductwrap w/ FSK. All ductwork shall be sealed against leakage per SMACNA.

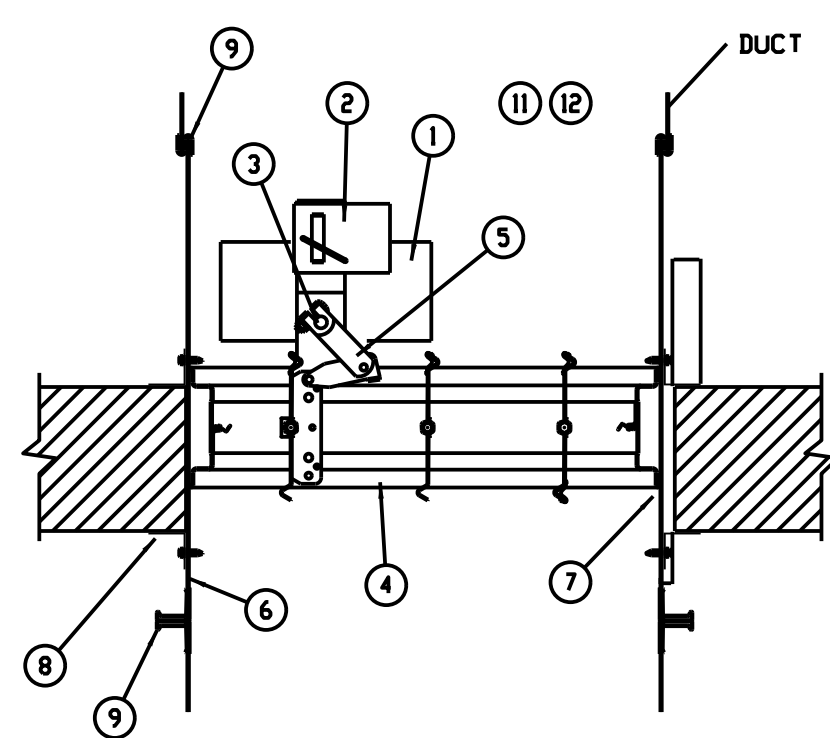
- | ITEM | DESCRIPTION  |
|------|--|
| 1.   | ACTUATOR w/ END SWITCH (LOCATION MAY VARY). RUSKIN'S UL LISTED FIRE DAMPER, OR GREENHECK. ACTUATORS MAY BE FIELD INSTALLED IF PROPERLY LABELED. SEE ACTUATOR INSTALLATION INSTRUCTIONS FOR FIELD MOUNTING OF DAMPER ACTUATORS. |
| 2.   | FIRESTAT OR SPI00  |
| 3.   | AUXILIARY OPERATING JACK SHAFT   |
| 4.   | FIRE - SMOKE DAMPER  |
| 5.   | OVER CENTER LOCK   |
| 6.   | SLEEVE   |
| 7.   | CAULKING MATERIAL (MAY BE ON EITHER SIDE OF DAMPER FRAME)  |
| 8.   | PFMA OR CONVENTIONAL MOUNTING ANGLES   |
| 9.   | S-JOINT/DUCT MATE, SLEEVE TO DUCT  |
| 10.  | RUSKIN MODEL NUMBERS LISTED. APPROVED EQUAL PRODUCTS FROM GREENHECK ARE ACCEPTABLE.  |
| 11.  | PROVIDE ACCESS DOORS AS REQUIRED.  |
| 12.  | PROVIDE SMOKE DETECTORS.   |

MAX UL CLASSIFIED SIZE  
 FSD60 0B, 60-110B, 370B, 360B, 350B, 340B

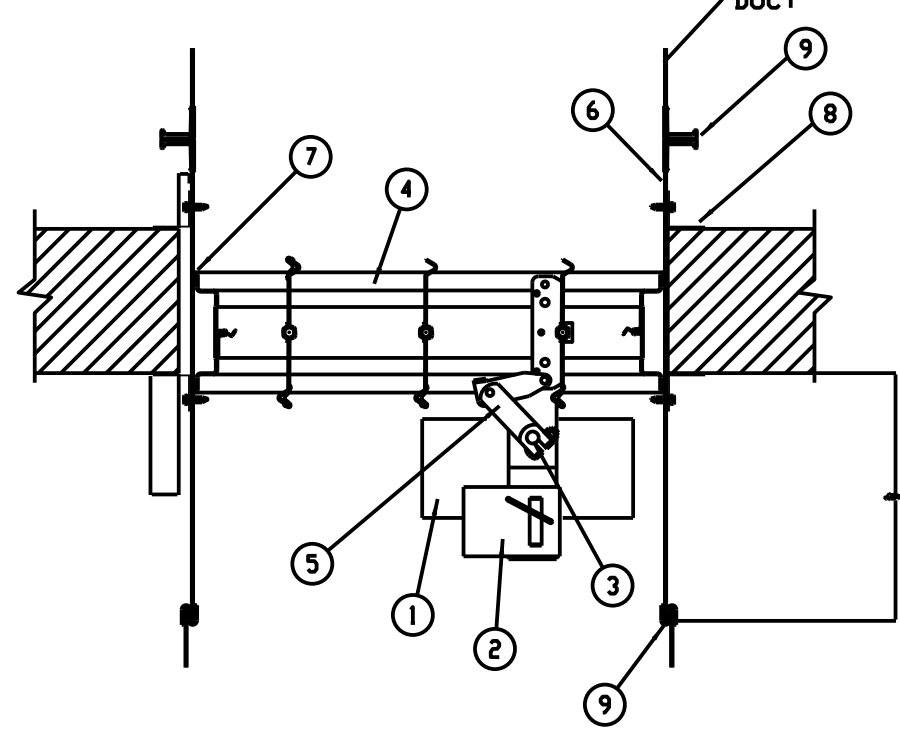


#A = 126" (3200) FOR FSD360B  
 #A = 120" (3048) FOR FSD340B, 350B, 370B, 60 0B, 60-110B  
 #B = 122" (3099) FOR FSD360B  
 #B = 99" (2489) FOR FSD600B, 60-110B  
 #B = 96" (2438) FOR FSD340B, 350B, 370B

14 GAGE (2) X DAMPER  
 14" DIMENSION X 5" (127) WIDE REINFORCING PLATE

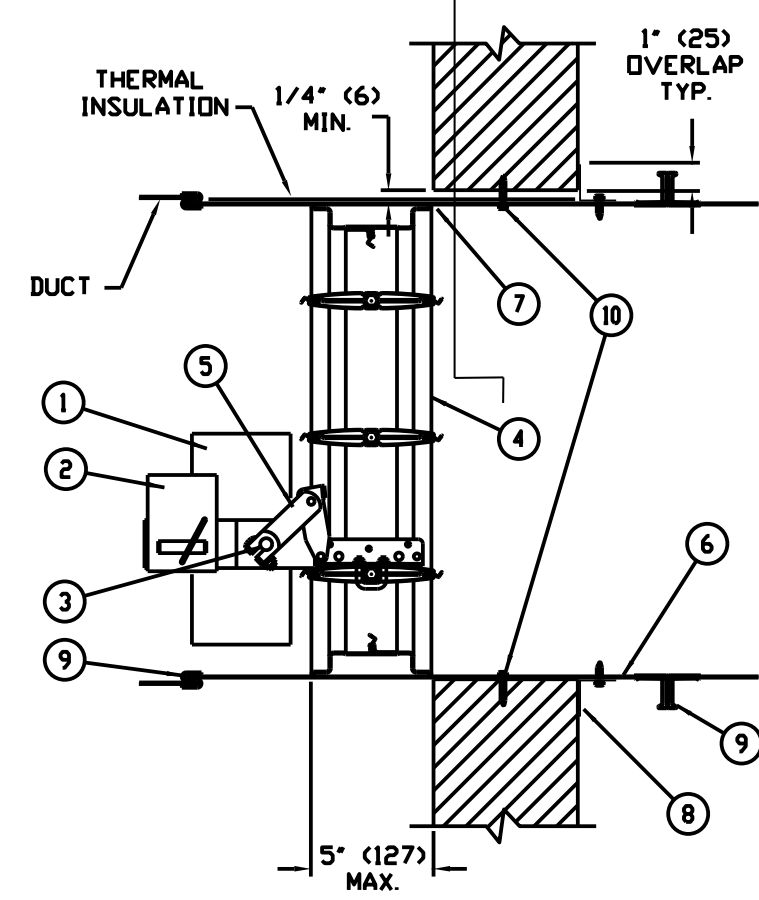


ACTUATOR ABOVE DAMPER



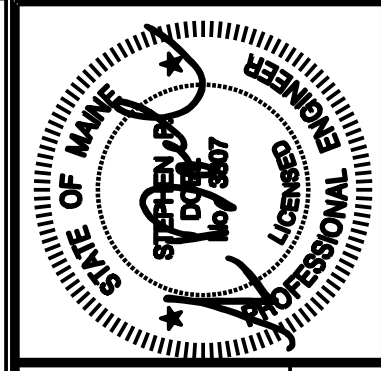
ACTUATOR BELOW DAMPER

FSD60 OUT OF WALL INSTALLATION



COMBINATION FD / SD INSTALLATION DETAIL

NTS



Prepared For: **Archetype**  
 Union Wharf  
 Portland, ME 04101

Consultant: **BENNETT ENGINEERING**  
 MECHANICAL - ELECTRICAL  
 (207) 865-8475

Architect: **ARCHETYPE Architects**  
 48 Union Wharf - Portland, Maine 04101  
 (207) 772-6022 ARCHETYPE@ARCHETYPEPA.COM

Project: **16 MIDDLE STREET OFFICE BUILDING**  
 MIDDLE STREET  
 PORTLAND, MAINE

Revisions: 06/01/2016: CD ISSUE

Scale: 1/8" = 1'-0" U.N.O.

Date: 1 JUNE 2016

HVAC ROOF PLAN

M1.04