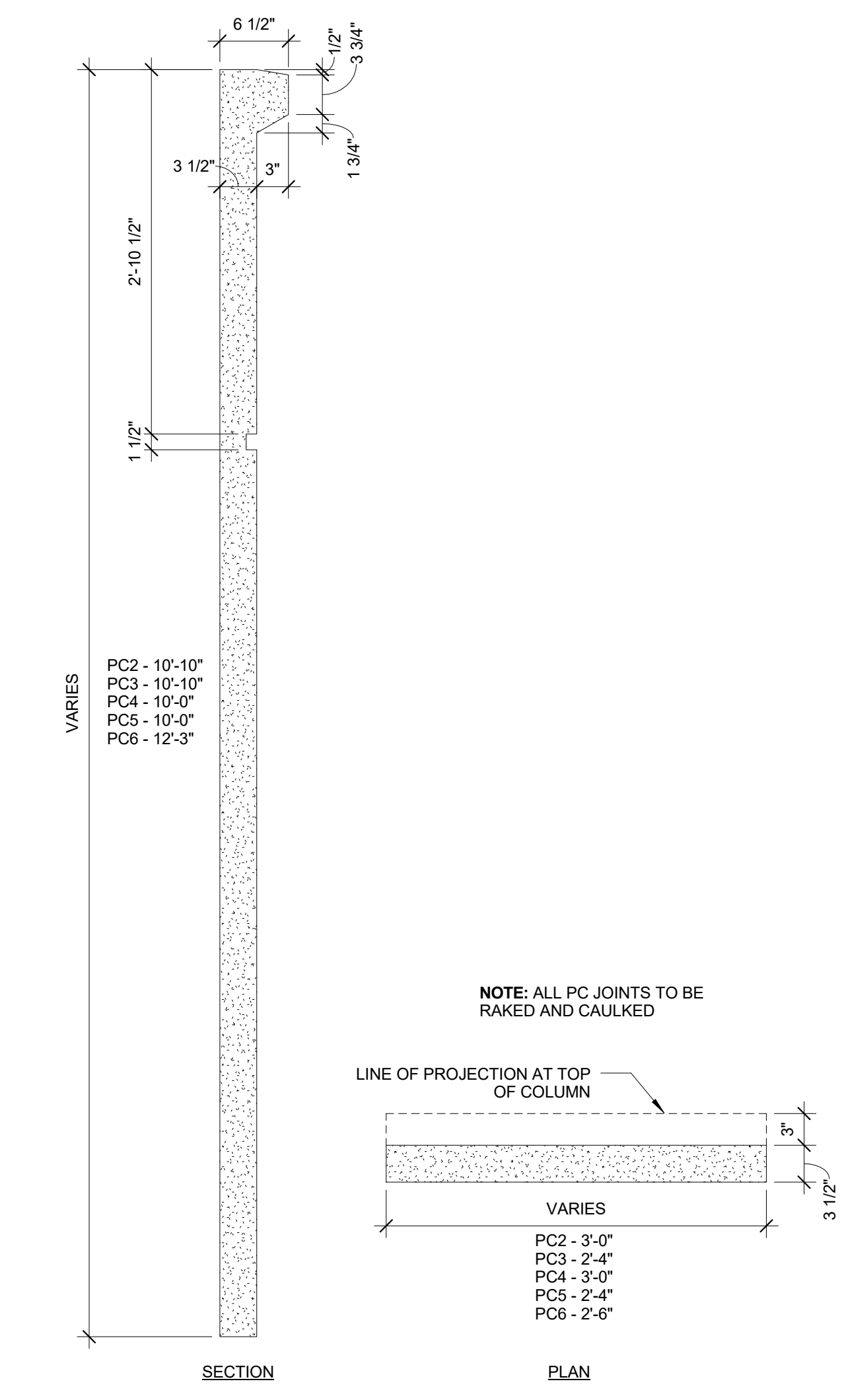
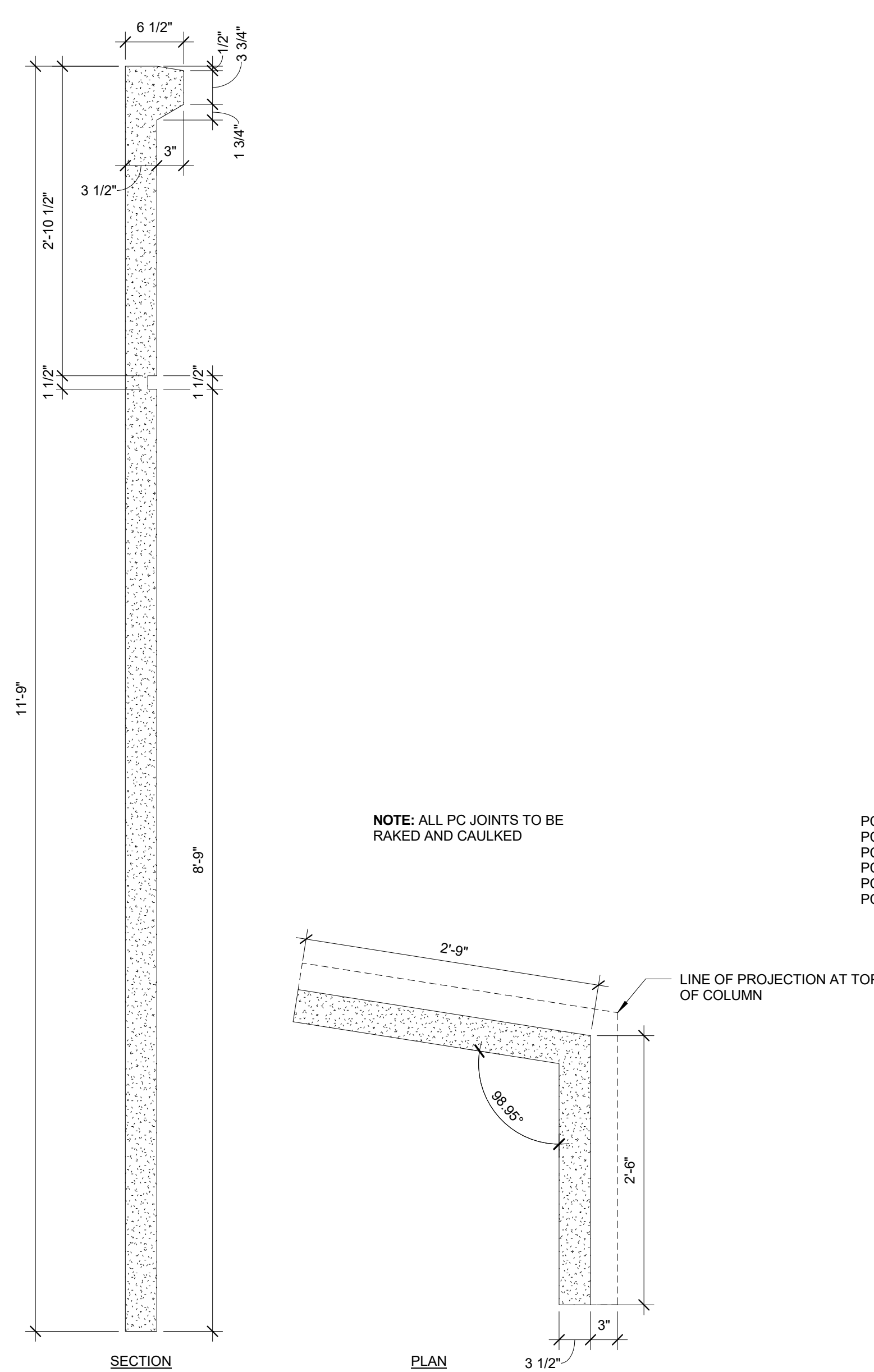


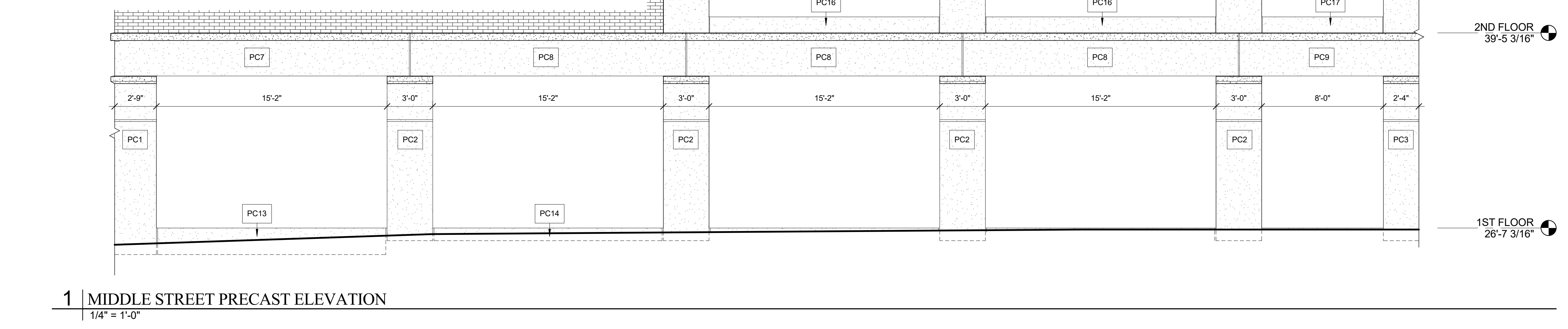
**5 | HEADER ABOVE STOREFRONT**  
1" = 1'-0"



**4 | COLUMN BETWEEN STOREFRONTS**  
1" = 1'-0"

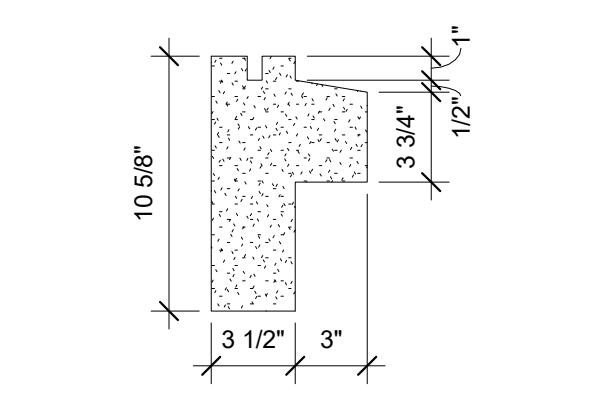


**6 | COLUMN AT CORNER OF STOREFRONT - PC1**  
1" = 1'-0"

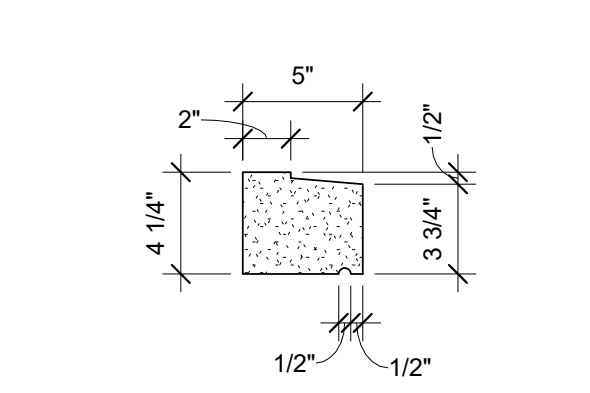


**1 | MIDDLE STREET PRECAST ELEVATION**  
1/4" = 1'-0"

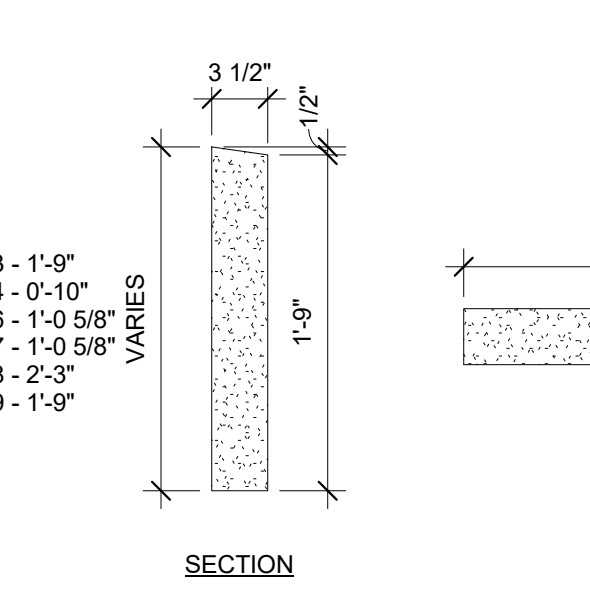
**10 | HEADER DETAIL**  
1 1/2" = 1'-0"



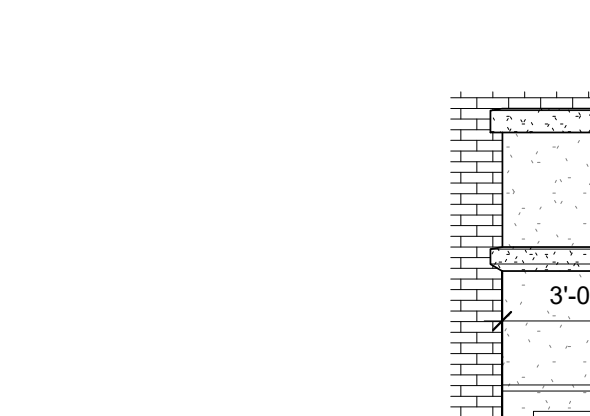
**9 | SILL DETAIL 2**  
1 1/2" = 1'-0"



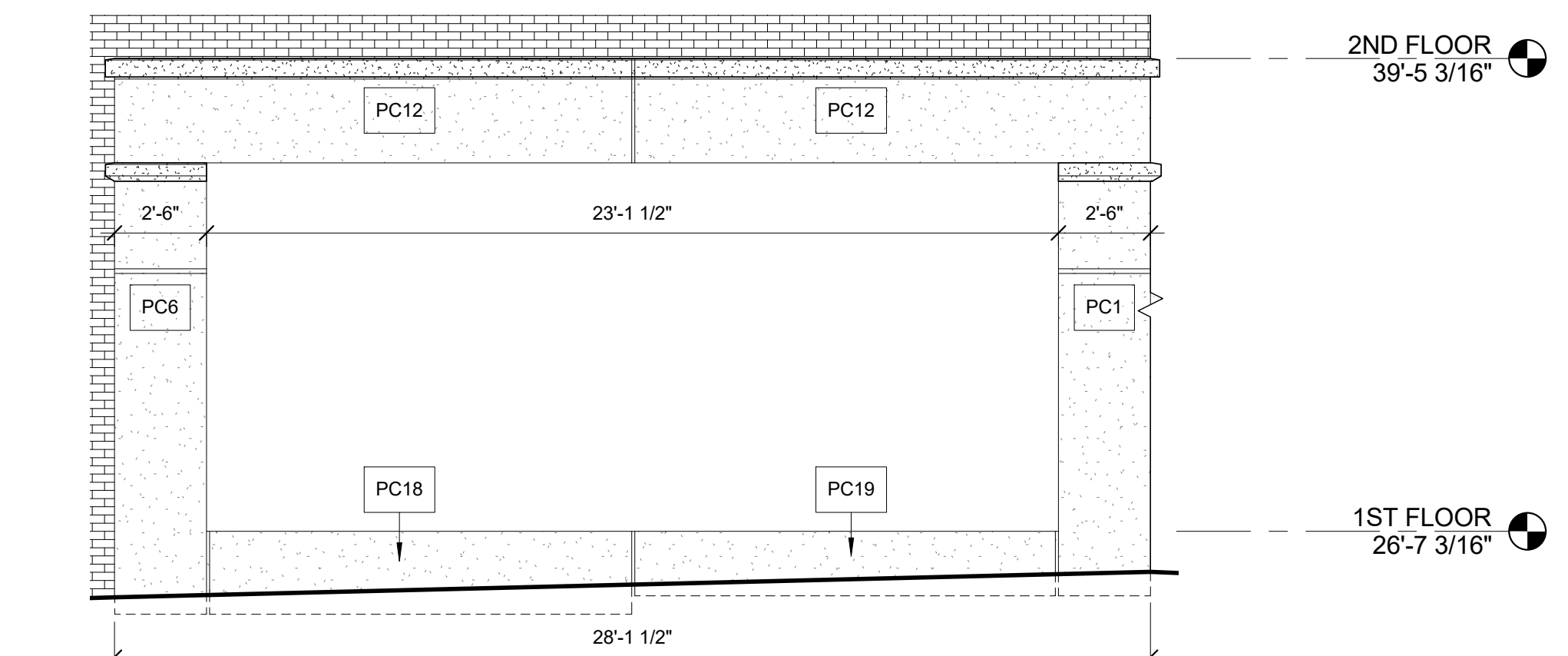
**8 | SILL DETAIL 1**  
1 1/2" = 1'-0"



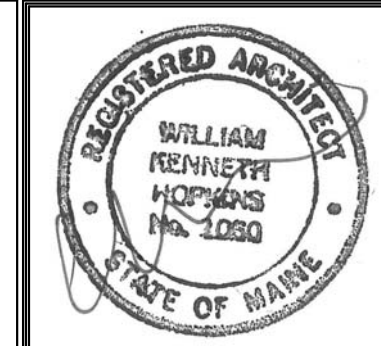
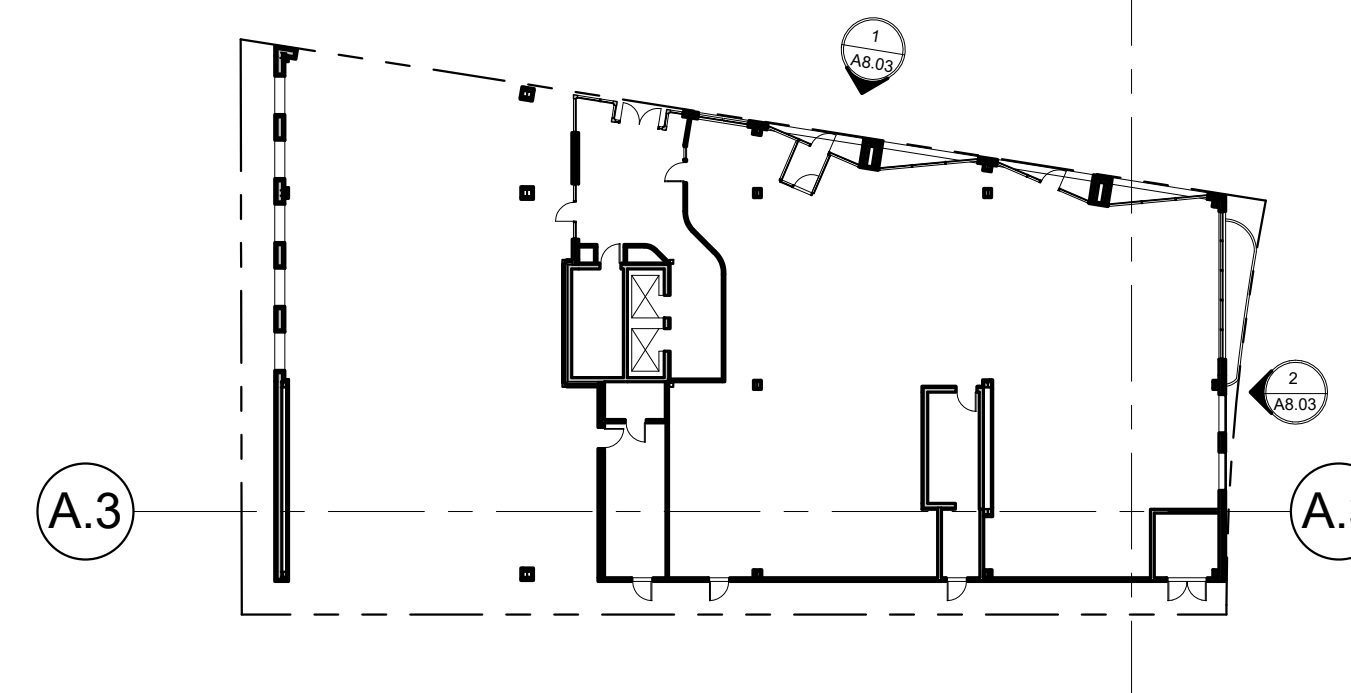
**7 | PLINTH BELOW STOREFRONT**  
1" = 1'-0"



**2 | HANCOCK STREET PRECAST ELEVATION**  
1/4" = 1'-0"



**3 | KEY PLAN**  
1" = 30'-0"



Prepared For:  
**16 Middle Street Associates, LLC**  
Address: City, State

Consultant:  
**ARCHETYPE architects**  
48 Union Wharf Portland, Maine 04101  
(207) 772-6022 ARCHETYPE@ARCHETYPEPA.COM

Project:  
**16 Middle Street**  
Portland, Maine

Revisions:

Date: **June 3, 2016**  
Scale: **As indicated**  
**Precast Schedule**

**A8.03**