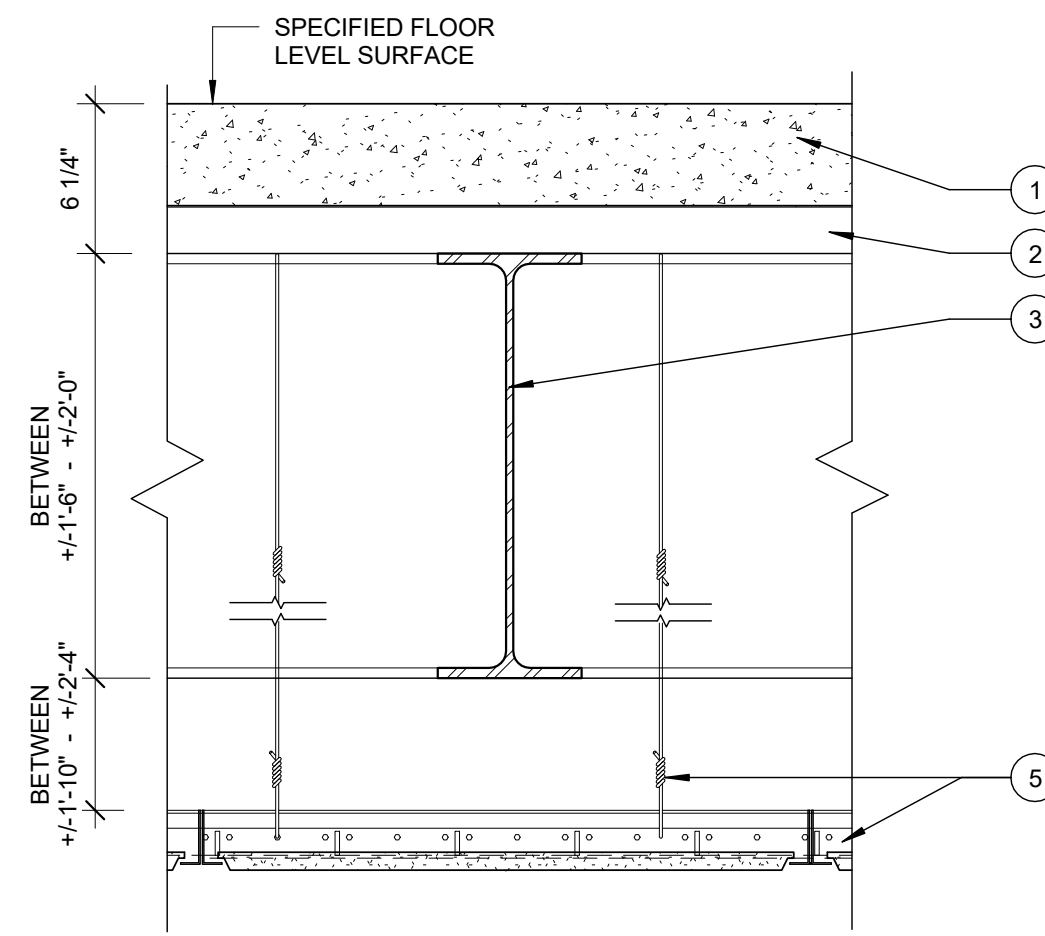


ROOF ASSEMBLY - NON-RATED

1. ROOF COVERING -- .060" EPDM FULLY ADHERED ROOF MEMBRANE
2. ROOF PROTECTION BOARD -- 1/2" DENSDECK
3. INSULATION -- 4" RIGID INSULATION
4. METAL DECK -- SEE STRUCTURAL
5. BAR JOISTS -- SEE STRUCTURAL
6. ACOUSTIC CEILING SYSTEM -- INSTALLED BY FUTURE TENANT

5 RC1 - NON-RATED ROOF ASSEMBLY

1 1/2" = 1'-0"

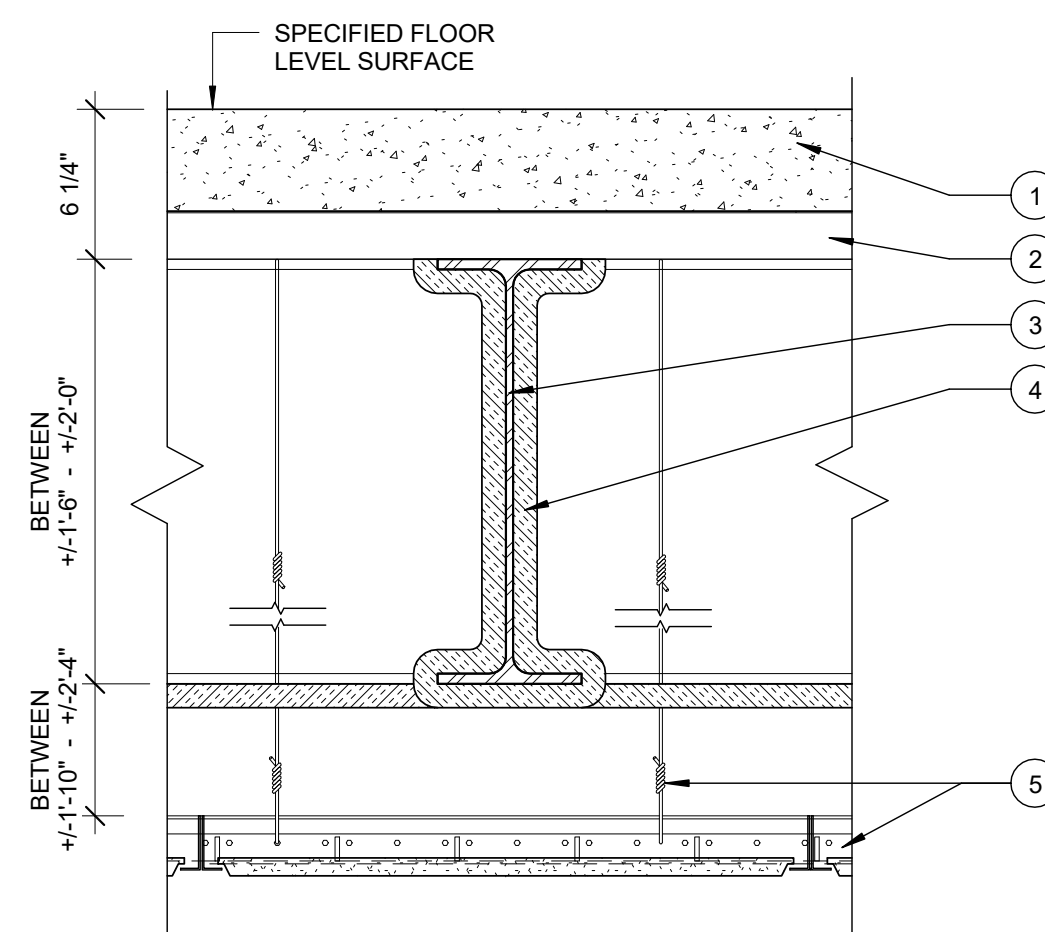


FLOOR/CEILING ASSEMBLY - NON-RATED

1. CONCRETE FLOOR -- 4-1/4" LIGHT WEIGHT CONCRETE REINFORCED WITH 6X6 - W2.9 x W2.9. (SEE STRUCTURAL)
2. METAL DECK -- 2" - 20 GA GALV. COMPOSITE METAL DECK
3. STEEL BEAM -- SEE STRUCTURAL
4. ACOUSTIC CEILING SYSTEM -- INSTALLED BY FUTURE TENANT

4 FC2 - NON-RATED FLOOR/CEILING ASSEMBLY

1 1/2" = 1'-0"



FLOOR/CEILING ASSEMBLY - 3 - HR RATING

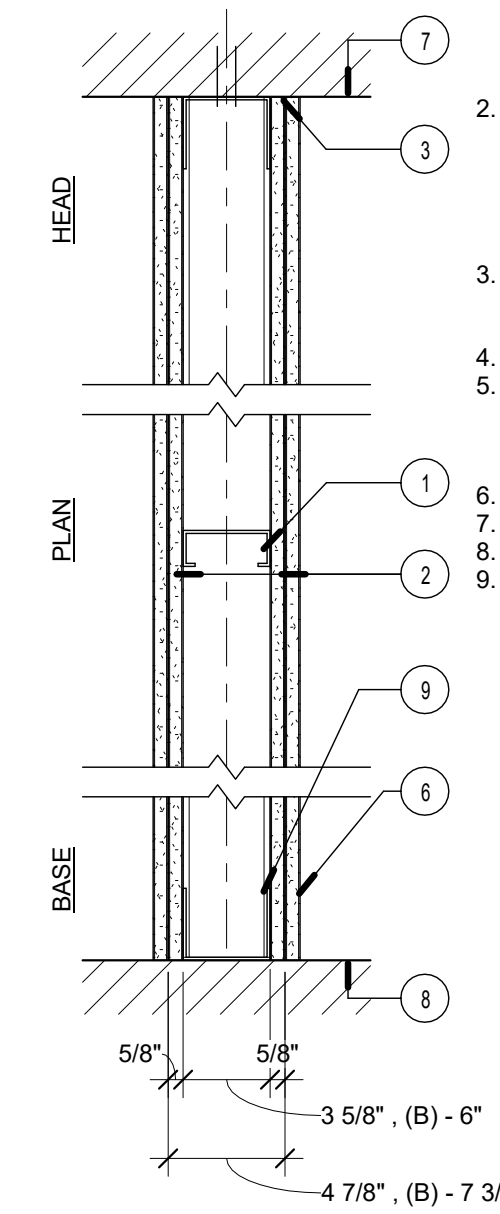
U.L. RATING = D902 (FOR CONCRETE FLOOR)  
U.L. RATING = PROVIDE U.L. DESIGN TO MEET REQUIRED RATING

1. CONCRETE FLOOR -- 4-1/4" LIGHT WEIGHT CONCRETE REINFORCED WITH 6X6 - W2.9 x W2.9. (SEE STRUCTURAL)
2. METAL DECK -- 2" - 20 GA GALV. COMPOSITE METAL DECK
3. STEEL BEAM -- SEE STRUCTURAL
4. SPRAY APPLIED FIRE RESISTIVE MATERIALS -- 3-HR RATING PER MANUFACTURERS INSTRUCTION
5. ACOUSTIC CEILING SYSTEM -- INSTALLED IN LOBBY (INSTALLED ELSEWHERE BY FUTURE TENANT)

3 FC1 - RATED FLOOR/CEILING ASSEMBLY

1 1/2" = 1'-0"

LABEL	1 HR	W09A	W09B	2 HR NON-BEARING PARTITION
		3 5/8"	6"	DESIGN NUMBER - UL419

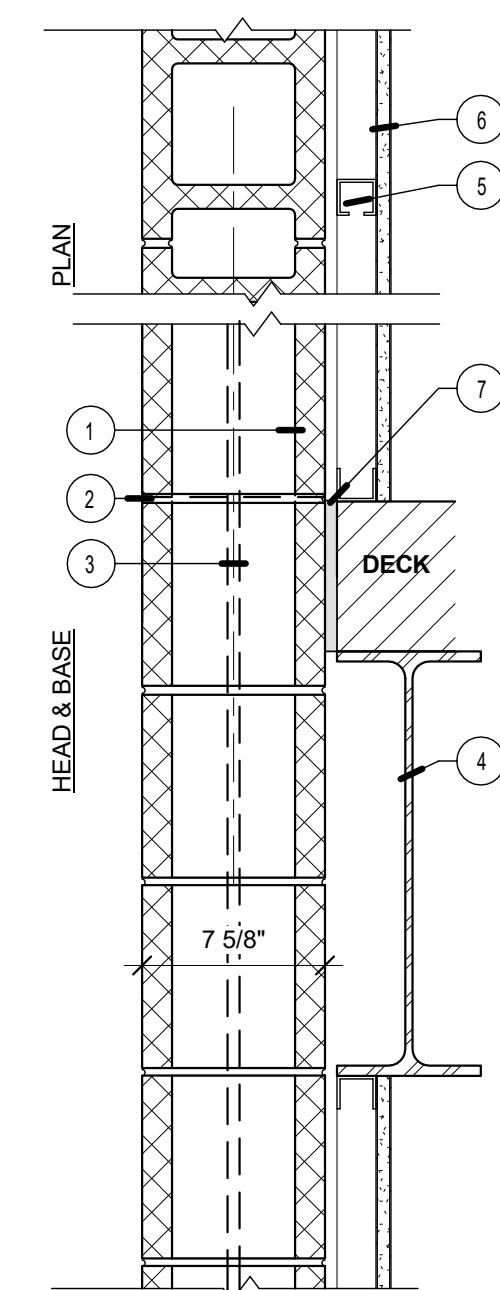


1. STUDS - CHANNEL-SHAPED, MIN 3-5/8" WIDE BY 1-1/4" DEEP WITH 5/16" FOLDED BACK RETURN FLANGE LEGS. FABRICATED FROM NO. 25 MSG GALV STEEL. MAX STUD SPACING 24" O.C. STUDS TO BE CUT 1" LESS THAN ASSEMBLY HEIGHT. NOTE: WALL TYPE 'B' USES 6" STUDS IN PLACE OF 3-5/8" STUDS.
2. TYPE X GYP BOARD - 5/8 IN. THICK, 4 FT WIDE, GYPSUM BOARD SECURED TO STUDS WITH 1" LONG TYPE S-12 STEEL SCREWS SPACED 12" O.C. GYPSUM BOARD JOINTS ORIENTED VERTICALLY, LOCATED OVER STUDS AND OFFSET BETWEEN LAYERS. GYP HELD UP FROM FLOOR MIN 1/4" TO 3/8" FOR INSTALLATION OF ACOUSTIC SEALANT - TYPICAL.
3. CAULKING AND SEALANTS - A BEAD OF ACOUSTICAL SEALANT APPLIED AROUND THE PARTITION PERIMETER FOR SOUND CONTROL, BOTH SIDES OF WALL.
4. BLOCKING - (NOT SHOWN) WOOD BLOCKING AS NEEDED
5. TAPE AND COMPOUND - (NOT SHOWN) VINYL, DRY OR PREMIXED JOINT COMPOUND, APPLIED IN TWO COATS TO JOINTS AND SCREW HEADS. PAPER TAPE, 2 IN. WIDE, EMBEDDED IN FIRST LAYER OF COMPOUND OVER ALL JOINTS.
6. BASE - SEE FINISH SCHEDULE
7. UNDERSIDE OF STRUCTURE
8. TOP OF STRUCTURE
9. FLOOR RUNNER - CHANNEL-SHAPED RUNNERS, MIN. 3 5/8" WIDE W/ DEEP LEGS, FABRICATED FROM NO. 20 MSG GALV STEEL. ATTACHED TO FLOOR WITH FASTENERS, 24" O.C. MAX.

2 WALL 09 - 2 HOUR RATED PARTITION

1 1/2" = 1'-0"

LABEL	2 HR	W08	2 HR BEARING FIRE BARRIER W/FURRED OUT WALL
			DESIGN NUMBER - UL - U905



1. CONCRETE BLOCKS - CLASSIFICATION D-2 (2HR) 8" NOM. THICKNESS.
2. MORTAR - BLOCKS LAID IN A FULL BED OF MORTAR, NOM. 3/8 IN THICK, OF NOT LESS THAN 2 1/4 AND NOT MORE THAN 3 1/2 PARTS CLEAN SHARP SAND TO 1 PART PORTLAND CEMENT (PROPORTIONED BY VOLUME) AND NOT MORE THAN 50 PERCENT HYDRATED LIME (BY CEMENT VOLUME). VERTICAL JOINTS STAGGERED.
3. REINFORCING - SEE STRUCTURAL
4. STRUCTURAL STEEL - SEE STRUCTURAL
5. STEEL STUDS - CHANNEL SHAPED 25 MSG STEEL 2 1/2" STUDS SPACED MAX. 24" O.C. STUDS TO BE CUT 3/4" LESS THAN ASSEMBLY HEIGHT
6. GYPSUM BOARD - (1) LAYER 5/8" GYP. BD. APPLIED PERPENDICULAR TO FRAMING WITH 1" TYPE S STEEL SCREWS SPACED 8" O.C.
7. U.L. RATED JOINT FILLER

1 WALL 08 - 2HR BEARING W/FURRED OUT WALL

1 1/2" = 1'-0"

06.03.15 - FOR PERMIT



Prepared For:  
16 Middle Street  
Associates, LLC  
P.O. Box 7486  
Portland, ME 04112

Consultant:

Architect:  
**ARCHETYPE** architects  
48 Union Wharf Portland, Maine 04101  
(207) 772-0022 ARCHETYPE@ARCHETYPEPA.COM

Project:  
16 Middle Street  
Portland, Maine

Revisions:

Scale:  
1 1/2" = 1'-0"

Date:  
June 3, 2016

Floor, Ceiling, Roof Types

A4.01