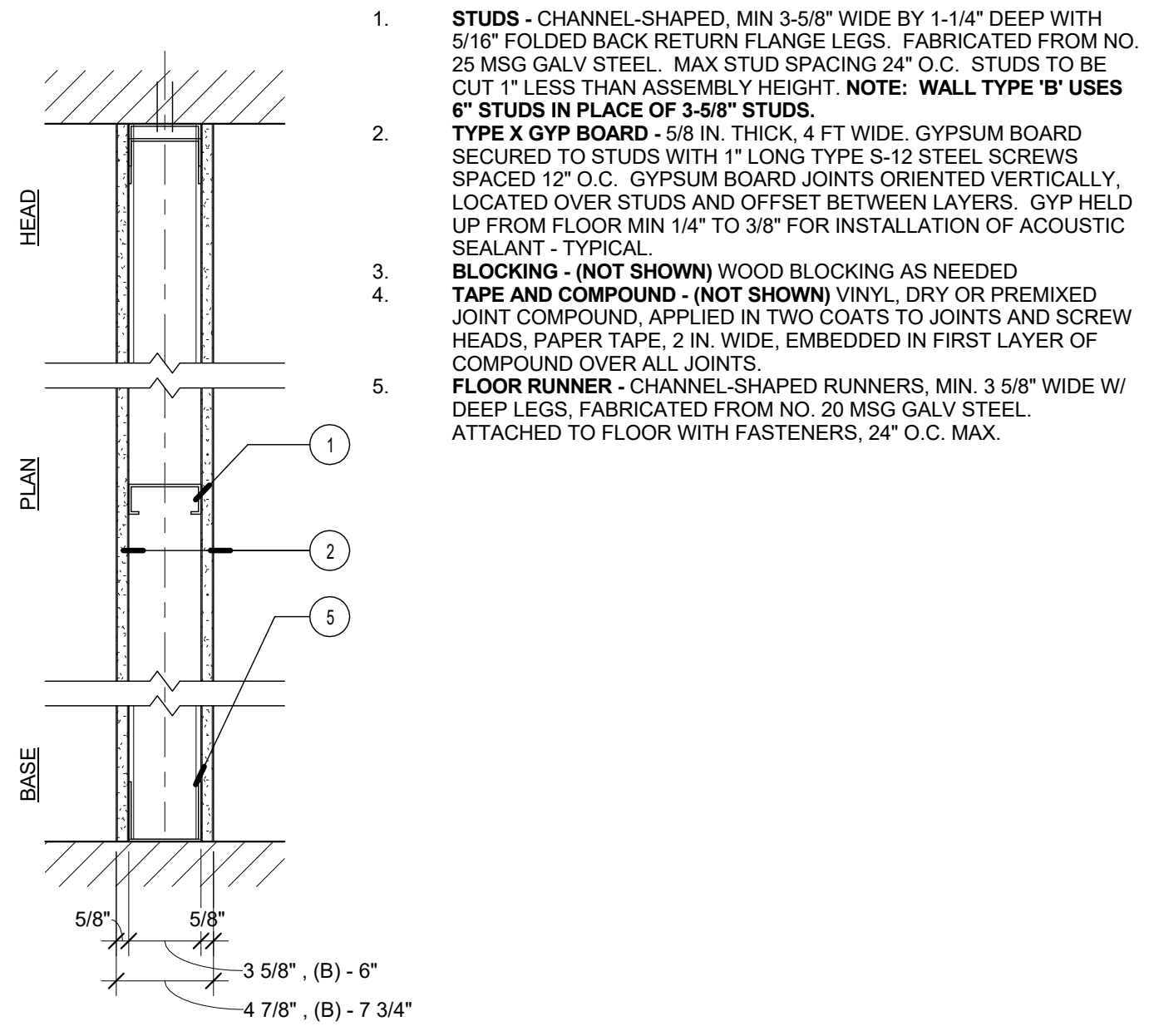


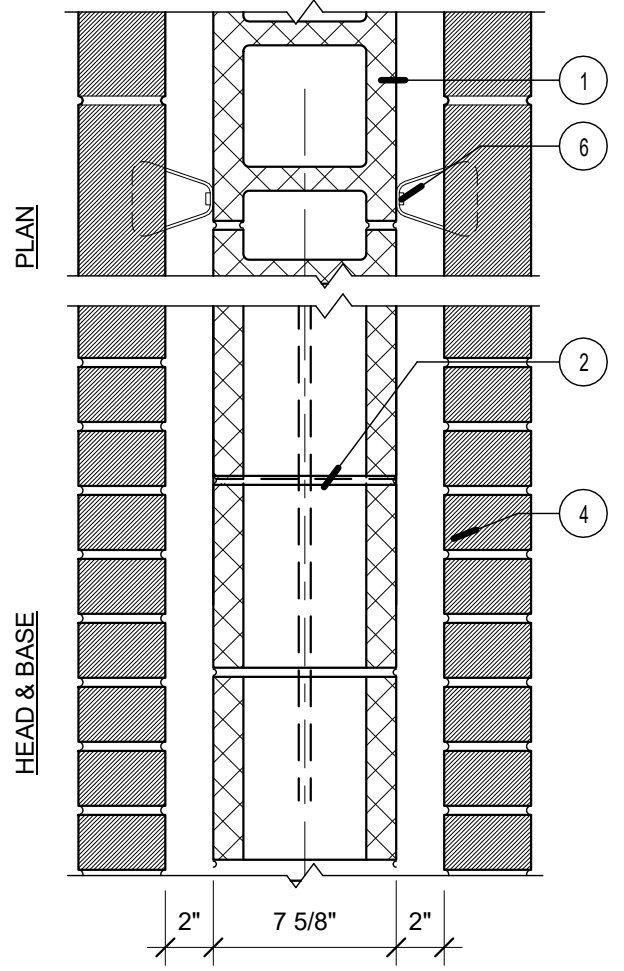
LABEL 1 HR	W07A	W07B	1 HR NON-BEARING PARTITION DESIGN NUMBER - U419
	3 5/8"	6"	



- STUDS** - CHANNEL-SHAPED, MIN 3-5/8" WIDE BY 1-1/4" DEEP WITH 5/16" FOLDED BACK RETURN FLANGE LEGS, FABRICATED FROM NO. 25 MSG GALV STEEL. MAX STUD SPACING 24" O.C. STUDS TO BE CUT 1" LESS THAN ASSEMBLY HEIGHT. **NOTE: WALL TYPE 'B' USES 6" STUDS IN PLACE OF 3-5/8" STUDS.**
- TYPE X GYP BOARD** - 5/8 IN. THICK, 4 FT WIDE, GYPSUM BOARD SECURED TO STUDS WITH 1" LONG TYPE S-12 STEEL SCREWS SPACED 12" O.C. GYPSUM BOARD JOINTS ORIENTED VERTICALLY, LOCATED OVER STUDS AND OFFSET BETWEEN LAYERS. GYP HELD UP FROM FLOOR MIN 1/4" TO 3/8" FOR INSTALLATION OF ACOUSTIC SEALANT - TYPICAL.
- BLOCKING** - (NOT SHOWN) WOOD BLOCKING AS NEEDED
- TAPE AND COMPOUND** - (NOT SHOWN) VINYL, DRY OR PREMIXED JOINT COMPOUND, APPLIED IN TWO COATS TO JOINTS AND SCREW HEADS, PAPER TAPE, 2 IN. WIDE, EMBEDDED IN FIRST LAYER OF COMPOUND OVER ALL JOINTS.
- FLOOR RUNNER** - CHANNEL-SHAPED RUNNERS, MIN. 3 5/8" WIDE W/ DEEP LEGS, FABRICATED FROM NO. 20 MSG GALV STEEL. ATTACHED TO FLOOR WITH FASTENERS, 24" O.C. MAX.

8 WALL 07A&B - NON RATED PARTITION
1 1/2" = 1'-0"

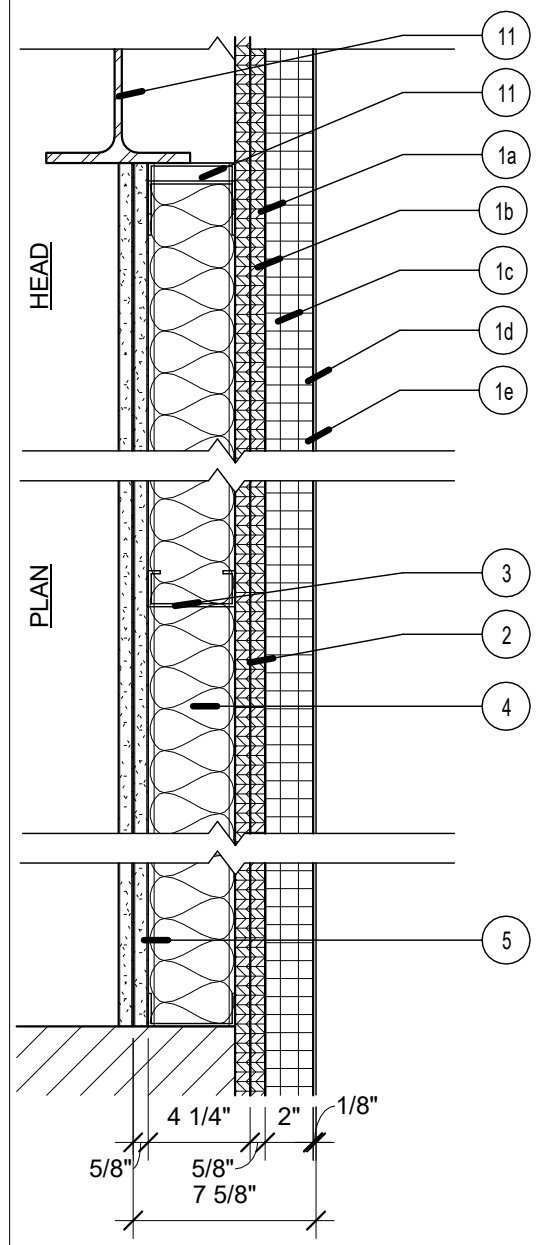
UNRATED	W05	CMU W/BRICK EXTERIOR WALL AT DRIVE THROUGH
----------------	------------	---



- CONCRETE BLOCKS** - CLASSIFICATION D-2 (2HR) 8" NOM. THICKNESS.
- MORTAR** - BLOCKS LAID IN A FULL BED OF MORTAR, NOM. 3/8 IN THICK, OF NOT LESS THAN 2 1/4 AND NOT MORE THAN 3 1/2 PARTS CLEAN SHARP SAND TO 1 PART PORTLAND CEMENT (PROPORTIONED BY VOLUME) AND NOT MORE THAN 50 PERCENT HYDRATED LIME (BY CEMENT VOLUME), VERTICAL JOINTS STAGGERED.
- REINFORCING** (NOT SHOWN) - SEE STRUCTURAL
- AIR SPACE** - TWO INCH AIR SPACE PROVIDED BETWEEN BRICK VENEER CONCRETE BLOCKS.
- BRICK VENEER** - NOMINAL 4 IN. WIDE BRICK VENEER FASTENED WITH STAINLESS STEEL ADJUSTABLE BRICK TIES, MECHANICALLY FASTENED TO CMU. TIES SPACED NOT MORE THAN EACH SIXTH COURSE OF BRICK AND MAX 32 IN. OC HORIZONTALLY.
- BRICK TIES**

6 WALL 05 - CMU W/BRICK WALL AT DRIVE THROUGH
1 1/2" = 1'-0"

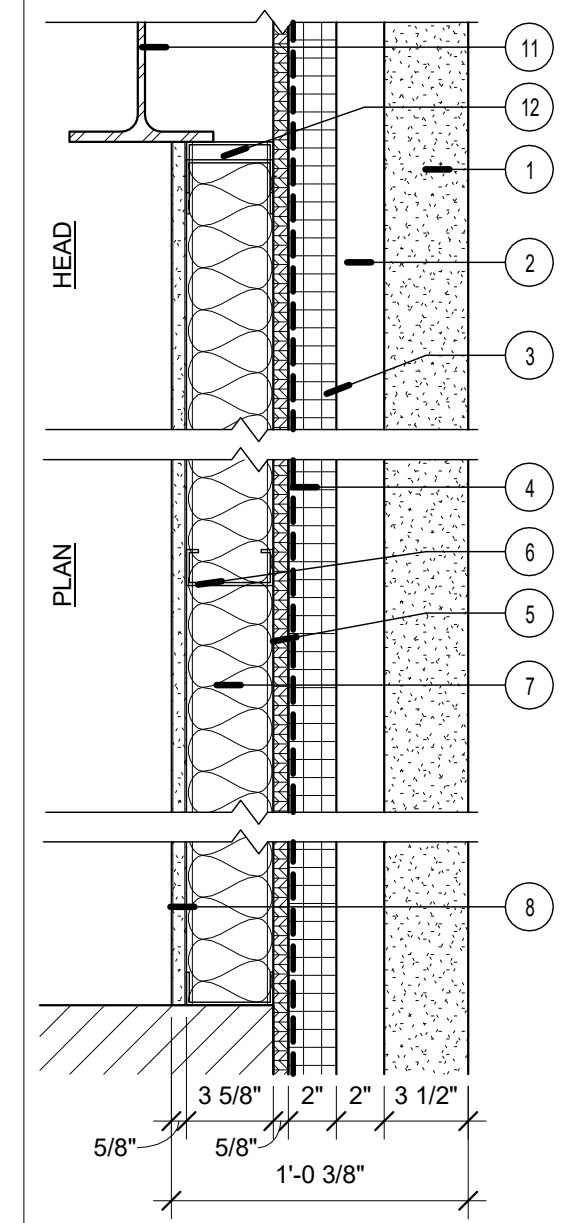
2 HOUR	W03A	2 HR RATED - TYPICAL EFIS EXTERIOR WALL W03A - DESIGN NUMBER - UL - GA FILE NO. WP8202
---------------	-------------	--



- EXTERIOR INSULATION FINISH SYSTEM (EFIS)** - a) DRYVIT WATER-RESISTIVE BARRIER COATING, b) DRYVIT ADHESIVE, c) 2" INSULATION BOARD, d) DRYVIT REINFORCING MESH EMBEDDED IN BASE COAT, e) DRYVIT FINISH COAT
- EXTERIOR SHEATHING** - (2) TWO LAYERS 5/8" DENSGLASS GYPSUM WALLBOARD APPLIED PARALLEL OR AT RIGHT ANGLES TO WALL STUDS WITH 1-5/8" TYPE S DRYWALL SCREWS 12" O.C.
- METAL STUDS** - 3-5/8" METAL STUDS. SEE STRUCTURALS FOR GAUGE AND SPACING.
- INSULATION** - 6" FIBERGLASS INSULATION (R-19)
- INTERIOR WALLBOARD** - (2) TWO LAYERS 5/8" TYPE X GYPSUM WALLBOARD APPLIED PARALLEL OR AT RIGHT ANGLES TO STUDS WITH 1" TYPE S DRYWALL SCREWS AT 24" O.C.
- JOINT TAPE AND COMPOUND** - (NOT SHOWN) VINYL, DRY OR PREMIXED JOINT COMPOUND, APPLIED TO JOINTS AND SCREW HEADS, PAPER TAPE, 2" WIDE, EMBEDDED IN FIRST LAYER OF COMPOUND OVER ALL JOINTS.
- BLOCKING** - (NOT SHOWN) WOOD BLOCKING AS NEEDED FOR OTHER TRADES. GC TO COORDINATE.
- SLIP TRACK** - TYP.
- STRUCTURAL STEEL** - SEE STRUCTURAL

4 WALL 03A - TYPICAL EFIS EXTERIOR WALL
1 1/2" = 1'-0"

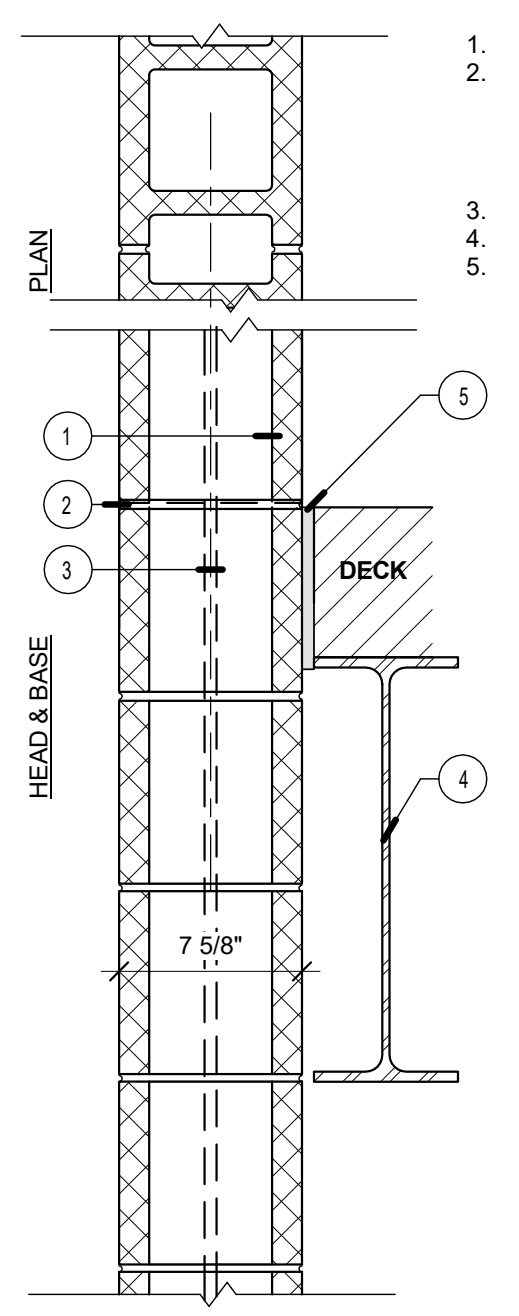
UNRATED	W02	TYPICAL PRE-CAST EXTERIOR WALL
----------------	------------	---------------------------------------



- PRE-CAST** - PRE-CAST CONCRETE MEDIUM TO HEAVY SAND BLAST FINISH
- AIR SPACE** - TWO INCH AIR SPACE PROVIDED BETWEEN BRICK VENEER AND INSULATION/SHEATHING.
- INSULATION** - TWO INCH TONGUE AND GROOVE EXTRUDED POLYSTYRENE WITH 25 PSI MIN. COMPRESSIVE STRENGTH SIMILAR TO DOW STYROFOAM.
- AIRMOISTURE BARRIER** - PROVIDE CONTINUOUS BARRIER PROTECTION OVER EXTERIOR SHEATHING.
- EXTERIOR SHEATHING** - ONE LAYER 5/8" DENSGLASS GYPSUM WALLBOARD APPLIED PARALLEL OR AT RIGHT ANGLES TO WALL STUDS WITH 1-5/8" TYPE S DRYWALL SCREWS 12" O.C.
- METAL STUDS** - SIX INCH METAL STUDS. SEE STRUCTURALS FOR GAUGE AND SPACING.
- INSULATION** - 6" FIBERGLASS INSULATION (R-19)
- INTERIOR WALLBOARD** - ONE LAYER 5/8" TYPE X GYPSUM WALLBOARD APPLIED PARALLEL OR AT RIGHT ANGLES TO STUDS WITH 1" TYPE S DRYWALL SCREWS AT 24" O.C.
- JOINT TAPE AND COMPOUND** - (NOT SHOWN) VINYL, DRY OR PREMIXED JOINT COMPOUND, APPLIED TO JOINTS AND SCREW HEADS, PAPER TAPE, 2" WIDE, EMBEDDED IN FIRST LAYER OF COMPOUND OVER ALL JOINTS.
- BLOCKING** - (NOT SHOWN) WOOD BLOCKING AS NEEDED FOR OTHER TRADES. GC TO COORDINATE.
- STRUCTURAL STEEL** - SEE STRUCTURAL
- SLIP TRACK** - TYP.

2 WALL 02 - TYPICAL PRE-CAST EXTERIOR WALL
1 1/2" = 1'-0"

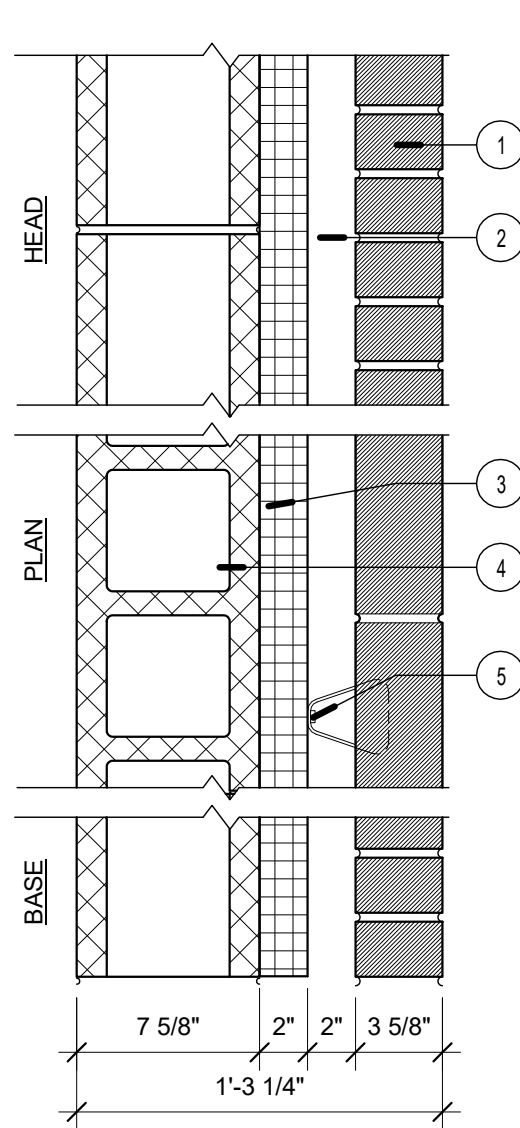
LABEL 2 HR	W06	2 HR BEARING FIRE BARRIER DESIGN NUMBER - UL - U905
-------------------	------------	---



- CONCRETE BLOCKS** - CLASSIFICATION D-2 (2HR) 8" NOM. THICKNESS.
- MORTAR** - BLOCKS LAID IN A FULL BED OF MORTAR, NOM. 3/8 IN THICK, OF NOT LESS THAN 2 1/4 AND NOT MORE THAN 3 1/2 PARTS CLEAN SHARP SAND TO 1 PART PORTLAND CEMENT (PROPORTIONED BY VOLUME) AND NOT MORE THAN 50 PERCENT HYDRATED LIME (BY CEMENT VOLUME), VERTICAL JOINTS STAGGERED.
- REINFORCING** - SEE STRUCTURAL
- STRUCTURAL STEEL** - SEE STRUCTURAL
- U.L. RATED JOINT FILLER**

7 WALL 06 - 2HR BEARING FIRE BARRIER
1 1/2" = 1'-0"

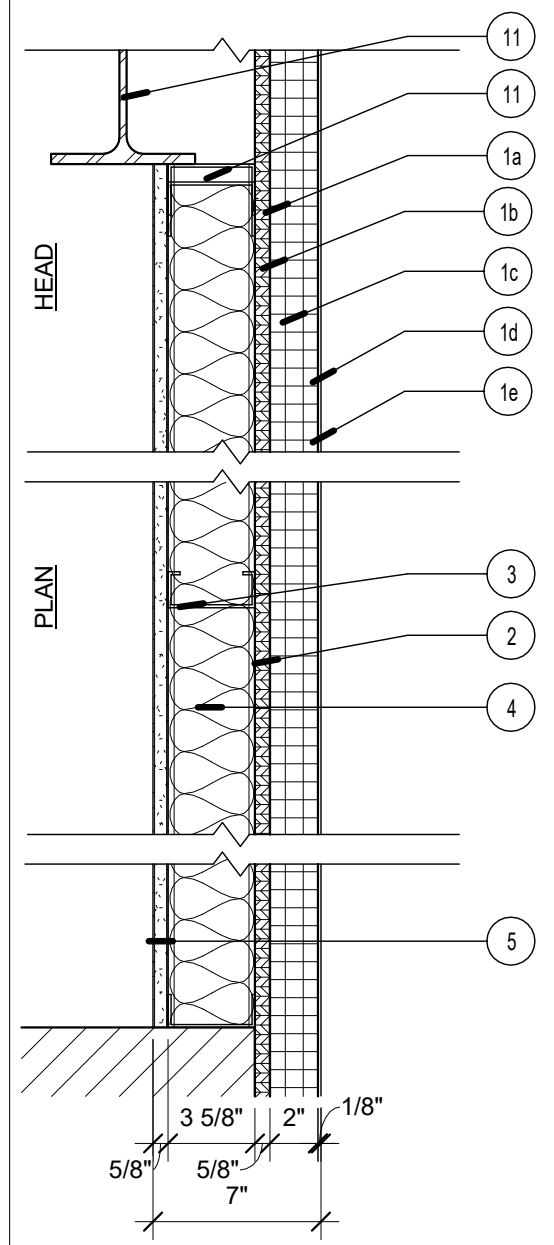
LABEL 2 HR	W04	2 HR - CMU W/BRICK EXTERIOR WALL DESIGN NUMBER - UL - U905
-------------------	------------	--



- BRICK VENEER** - NOMINAL 4 IN. WIDE BRICK VENEER FASTENED WITH STAINLESS STEEL ADJUSTABLE BRICK TIES MECHANICALLY FASTEN TO CMU. TIES SPACED NOT MORE THAN EACH SIXTH COURSE OF BRICK AND MAX 32 IN. OC HORIZONTALLY.
- AIR SPACE** - TWO INCH AIR SPACE PROVIDED BETWEEN BRICK VENEER AND INSULATION.
- INSULATION** - TWO INCH TONGUE AND GROOVE EXTRUDED POLYSTYRENE WITH 25 PSI MIN. COMPRESSIVE STRENGTH SIMILAR TO DOW STYROFOAM.
- CONCRETE BLOCKS** - CLASSIFICATION D-2 (2HR) 8" NOM. THICKNESS.
- BRICK TIE**

5 WALL 04 - TYPICAL CMU W/BRICK EXTERIOR WALL
1 1/2" = 1'-0"

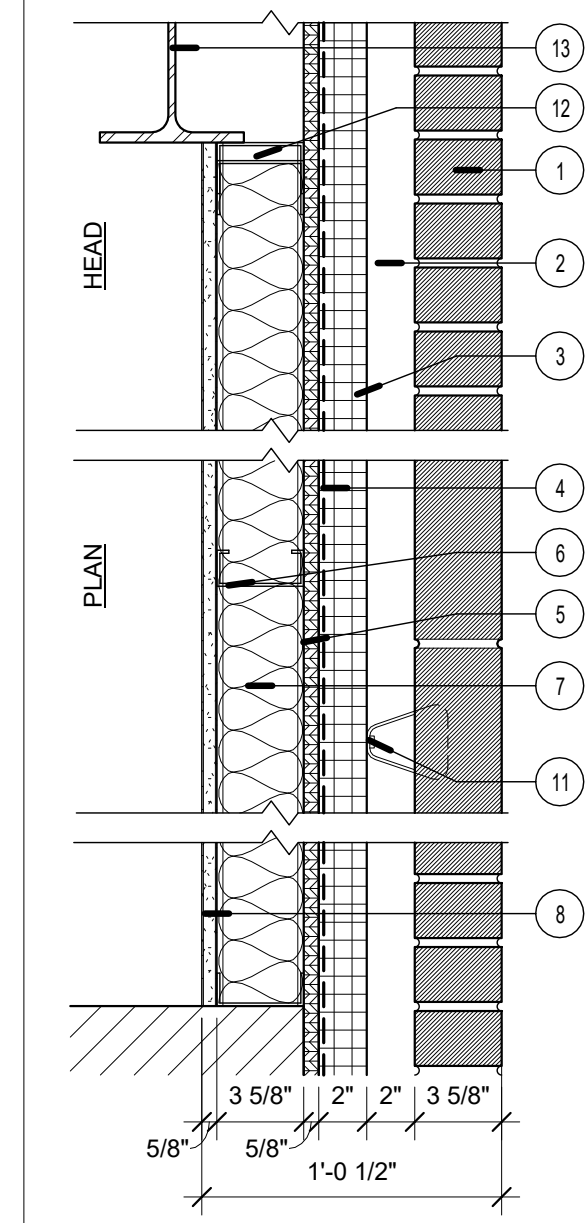
UNRATED	W03	TYPICAL EFIS EXTERIOR WALL
----------------	------------	-----------------------------------



- EXTERIOR INSULATION FINISH SYSTEM (EFIS)** - a) DRYVIT WATER-RESISTIVE BARRIER COATING, b) DRYVIT ADHESIVE, c) 2" INSULATION BOARD, d) DRYVIT REINFORCING MESH EMBEDDED IN BASE COAT, e) DRYVIT FINISH COAT
- EXTERIOR SHEATHING** - ONE LAYER 5/8" DENSGLASS GYPSUM WALLBOARD APPLIED PARALLEL OR AT RIGHT ANGLES TO WALL STUDS WITH 1-5/8" TYPE S DRYWALL SCREWS 12" O.C.
- METAL STUDS** - 3-5/8" METAL STUDS. SEE STRUCTURALS FOR GAUGE AND SPACING.
- INSULATION** - 6" FIBERGLASS INSULATION (R-19)
- INTERIOR WALLBOARD** - ONE LAYER 5/8" TYPE X GYPSUM WALLBOARD APPLIED PARALLEL OR AT RIGHT ANGLES TO STUDS WITH 1" TYPE S DRYWALL SCREWS AT 24" O.C.
- JOINT TAPE AND COMPOUND** - (NOT SHOWN) VINYL, DRY OR PREMIXED JOINT COMPOUND, APPLIED TO JOINTS AND SCREW HEADS, PAPER TAPE, 2" WIDE, EMBEDDED IN FIRST LAYER OF COMPOUND OVER ALL JOINTS.
- BLOCKING** - (NOT SHOWN) WOOD BLOCKING AS NEEDED FOR OTHER TRADES. GC TO COORDINATE.
- SLIP TRACK** - TYP.
- STRUCTURAL STEEL** - SEE STRUCTURAL

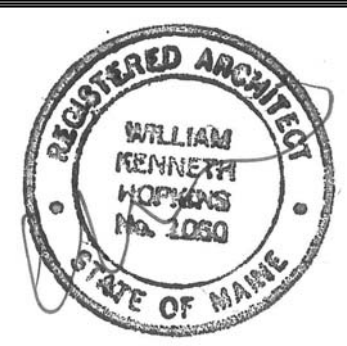
3 WALL 03 - TYPICAL EFIS EXTERIOR WALL
1 1/2" = 1'-0"

UNRATED	W01	TYPICAL BRICK EXTERIOR WALL ONE HOUR REQUIRED ON WEST WALL ONLY
----------------	------------	---



- BRICK VENEER** - NOMINAL 4 IN. WIDE BRICK VENEER FASTENED WITH STAINLESS STEEL ADJUSTABLE BRICK TIES ATTACHED OVER SHEATHING TO METAL STUDS WITH STAINLESS STEEL SCREWS, TIES SPACED NOT MORE THAN EACH SIXTH COURSE OF BRICK AND MAX 32 IN. OC HORIZONTALLY.
- AIR SPACE** - TWO INCH AIR SPACE PROVIDED BETWEEN BRICK VENEER AND INSULATION/SHEATHING.
- INSULATION** - TWO INCH TONGUE AND GROOVE EXTRUDED POLYSTYRENE WITH 25 PSI MIN. COMPRESSIVE STRENGTH SIMILAR TO DOW STYROFOAM.
- AIRMOISTURE BARRIER** - PROVIDE CONTINUOUS BARRIER PROTECTION OVER EXTERIOR SHEATHING.
- EXTERIOR SHEATHING** - ONE LAYER 5/8" DENSGLASS GYPSUM WALLBOARD APPLIED PARALLEL OR AT RIGHT ANGLES TO WALL STUDS WITH 1-5/8" TYPE S DRYWALL SCREWS 12" O.C.
- METAL STUDS** - SIX INCH METAL STUDS. SEE STRUCTURALS FOR GAUGE AND SPACING.
- INSULATION** - 6" FIBERGLASS INSULATION (R-19)
- INTERIOR WALLBOARD** - ONE LAYER 5/8" TYPE X GYPSUM WALLBOARD APPLIED PARALLEL OR AT RIGHT ANGLES TO STUDS WITH 1" TYPE S DRYWALL SCREWS AT 24" O.C.
- JOINT TAPE AND COMPOUND** - (NOT SHOWN) VINYL, DRY OR PREMIXED JOINT COMPOUND, APPLIED TO JOINTS AND SCREW HEADS, PAPER TAPE, 2" WIDE, EMBEDDED IN FIRST LAYER OF COMPOUND OVER ALL JOINTS.
- BLOCKING** - (NOT SHOWN) WOOD BLOCKING AS NEEDED FOR OTHER TRADES. GC TO COORDINATE.
- BRICK TIES**
- SLIP TRACK** - TYP.
- STRUCTURAL STEEL** - SEE STRUCTURAL

1 WALL 01 - TYPICAL BRICK EXTERIOR WALL
1 1/2" = 1'-0"



Prepared For:
16 Middle Street
Associates, LLC
Address
City, State

Architect
ARCHITECTYPE
architects
48 Union Wharf Portland, Maine 04101
(207) 772-0022 ARCHITYPE@ARCHITYPEA.COM

Project:
16 Middle Street
Portland, Maine

Revisions:

Date: **June 3, 2016**
Scale: **1 1/2" = 1'-0"**
Wall Types

A4.00