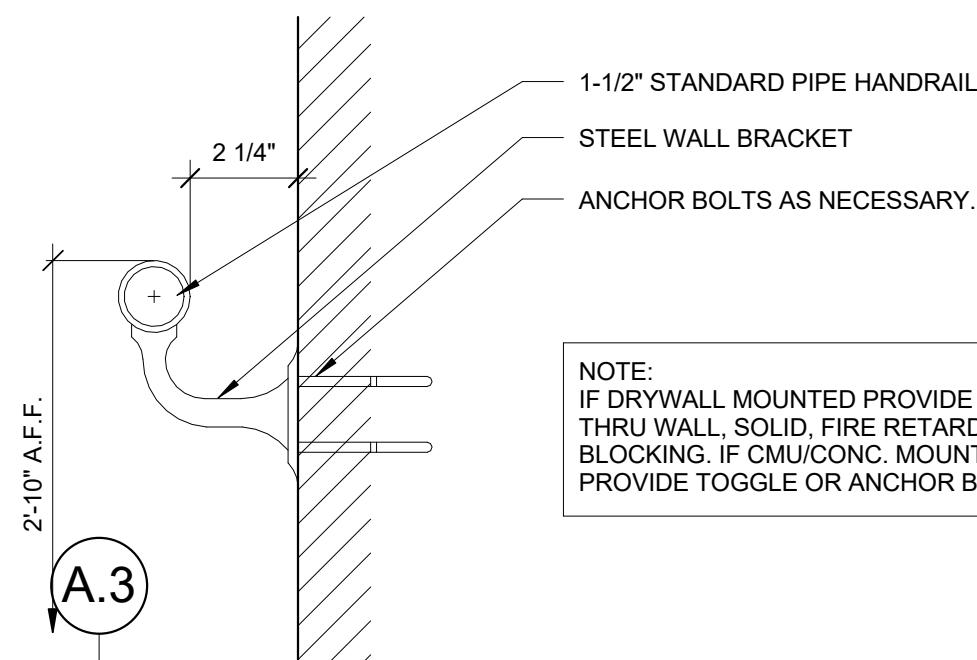
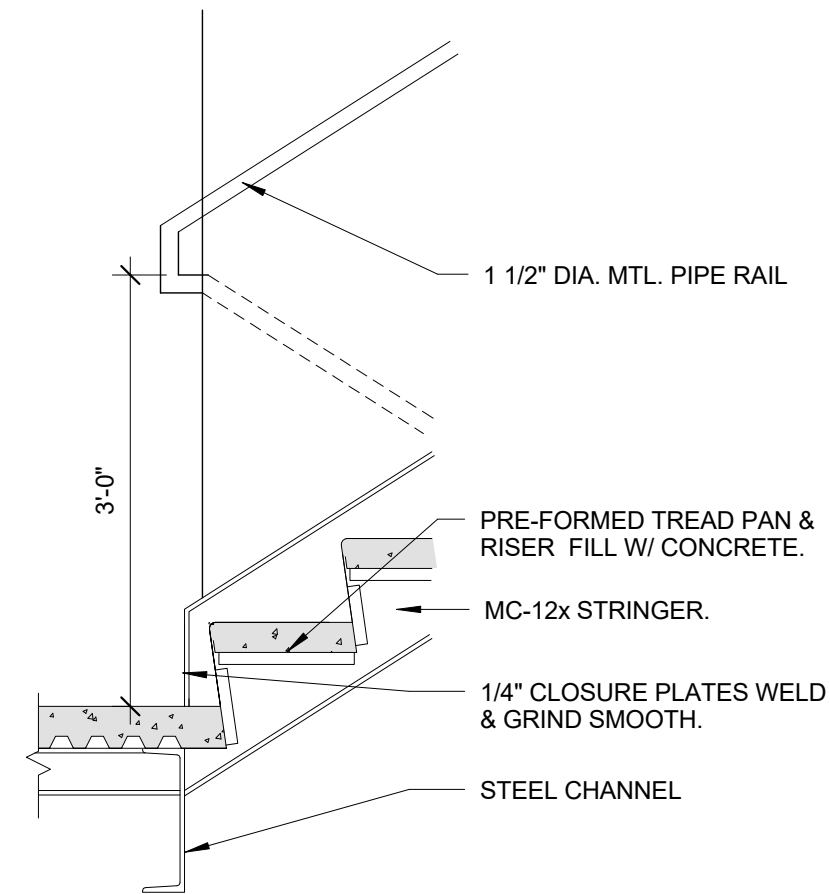


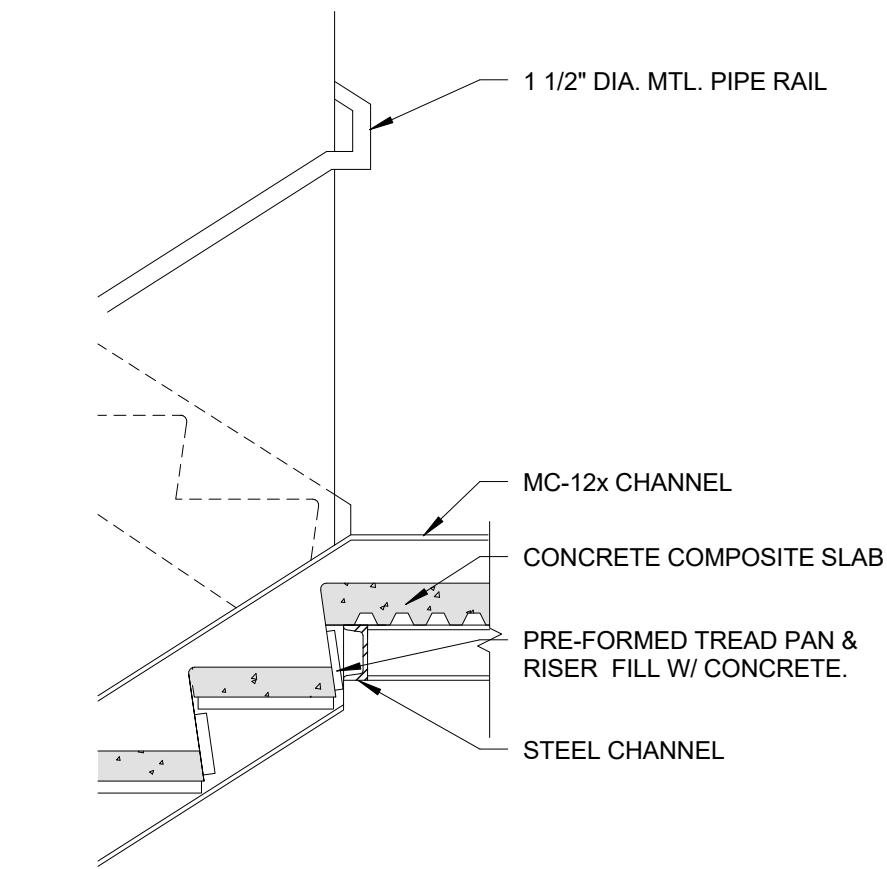
10 STAIR - METAL HANDRAIL DETAIL - PLAN
3" = 1'-0"



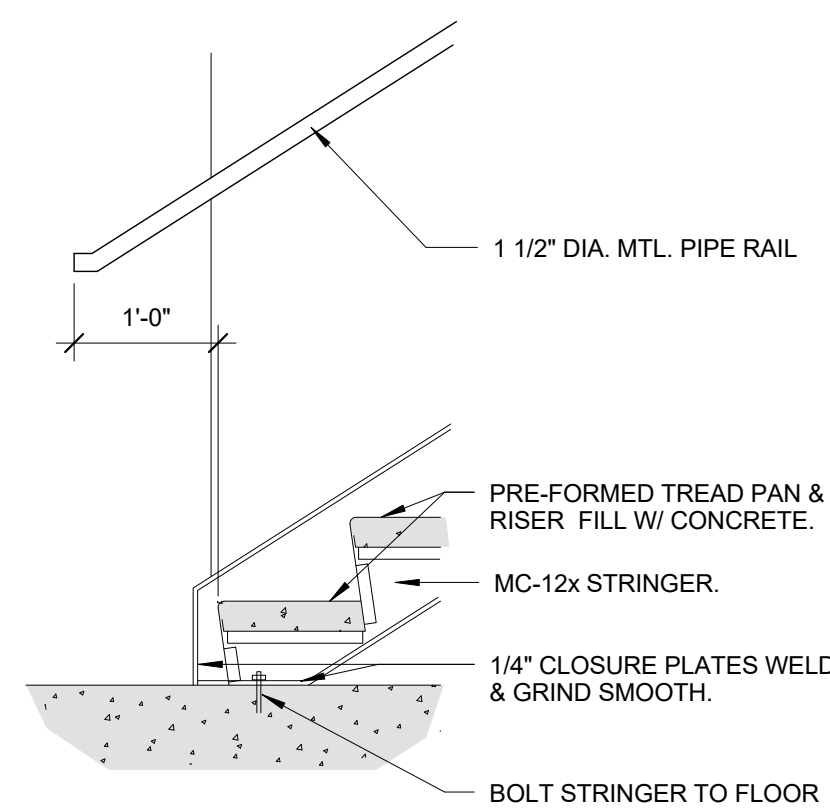
11 STAIR - METAL HANDRAIL DETAIL - SECTION
3" = 1'-0"



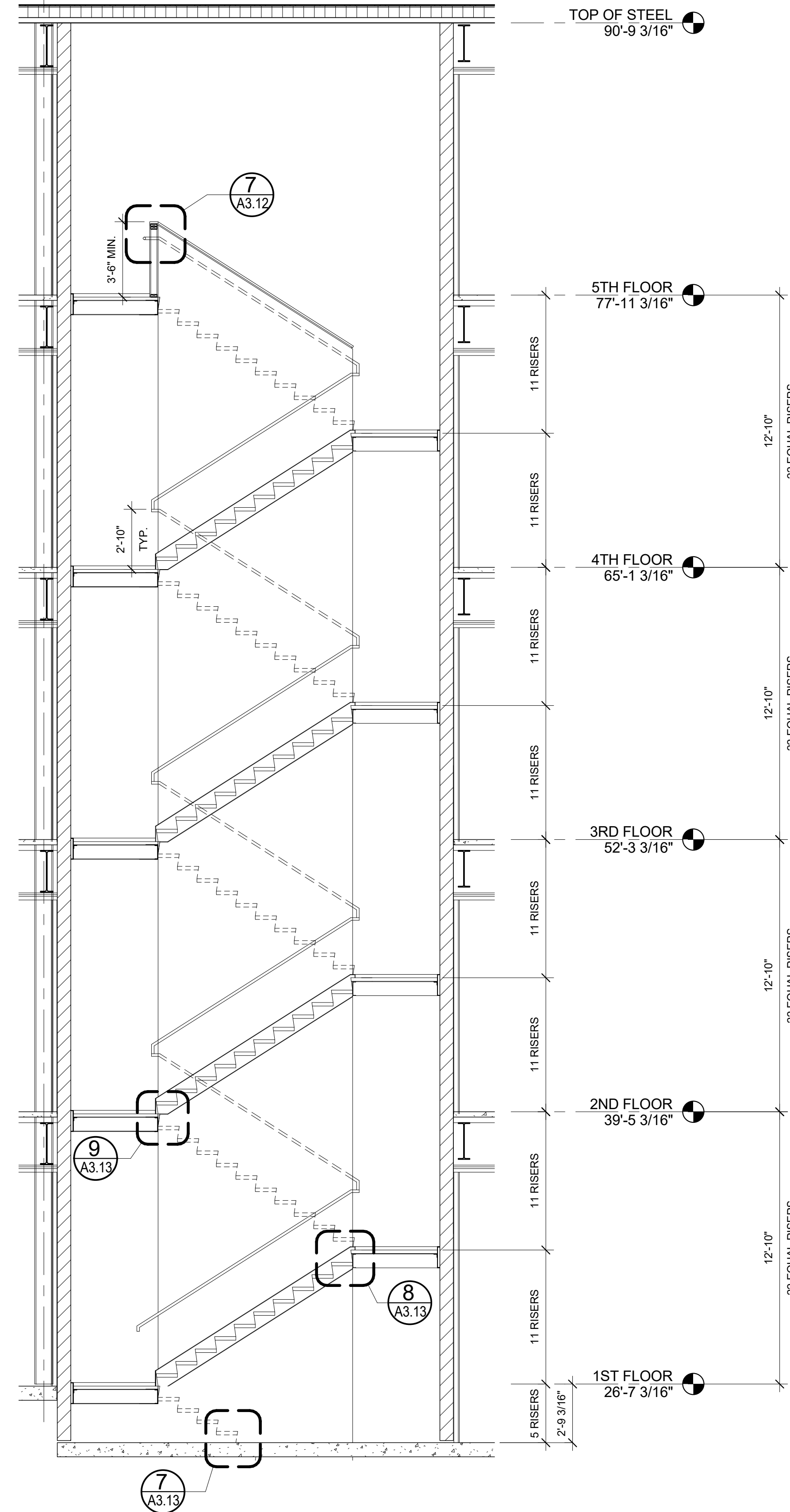
9 STAIR DETAIL - B/O RUN TO LANDING
3/4" = 1'-0"



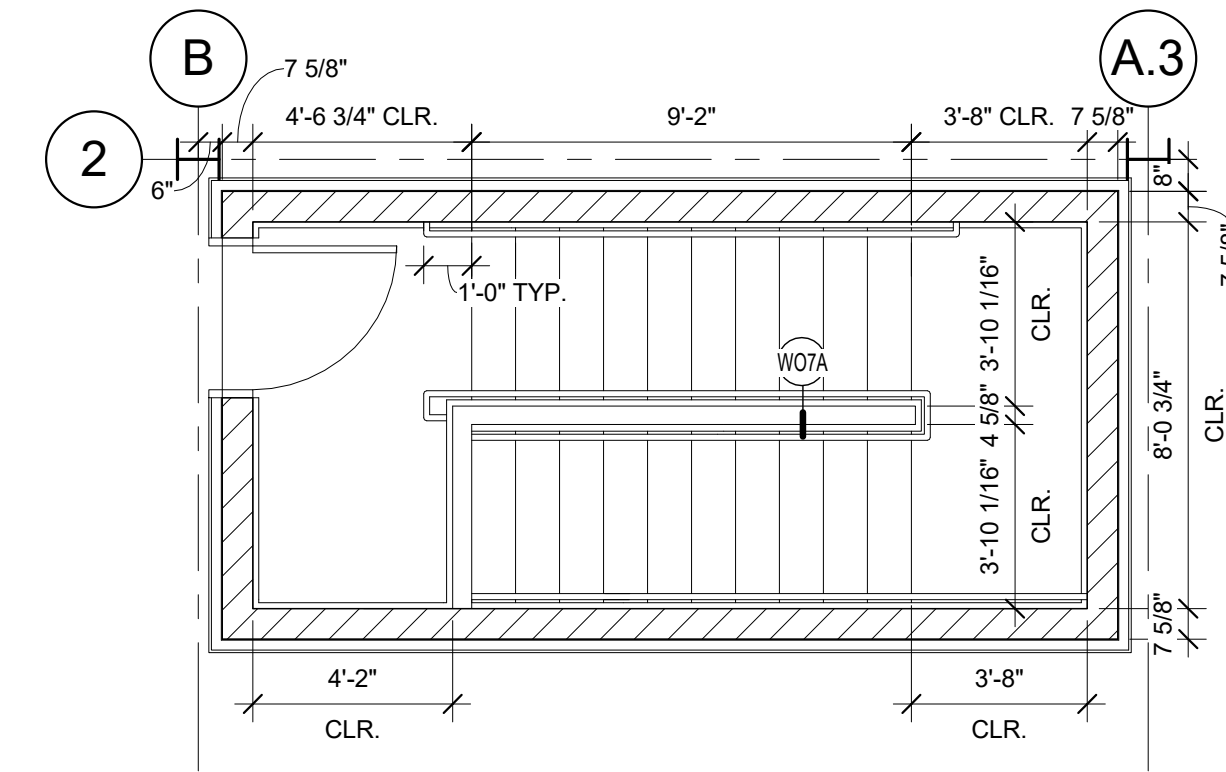
8 STAIR DETAIL - T/O RUN TO LANDING
3/4" = 1'-0"



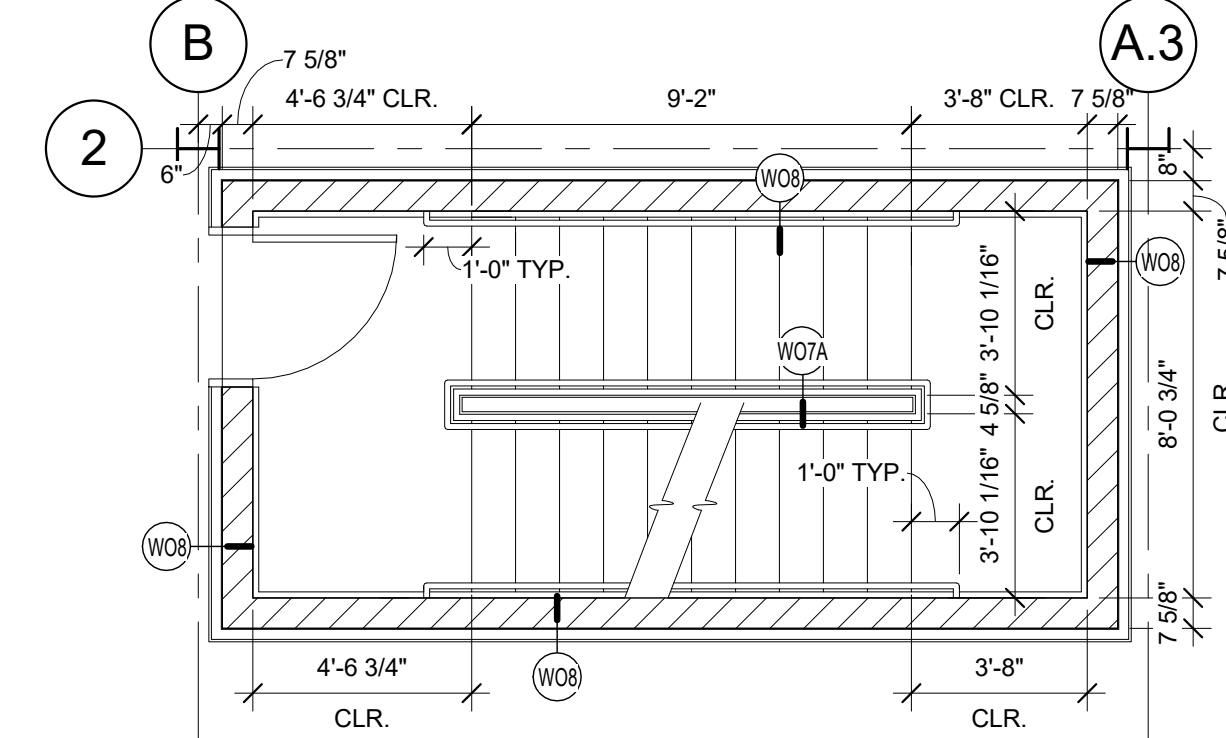
7 STAIR DETAIL - B/O RUN TO DECK
3/4" = 1'-0"



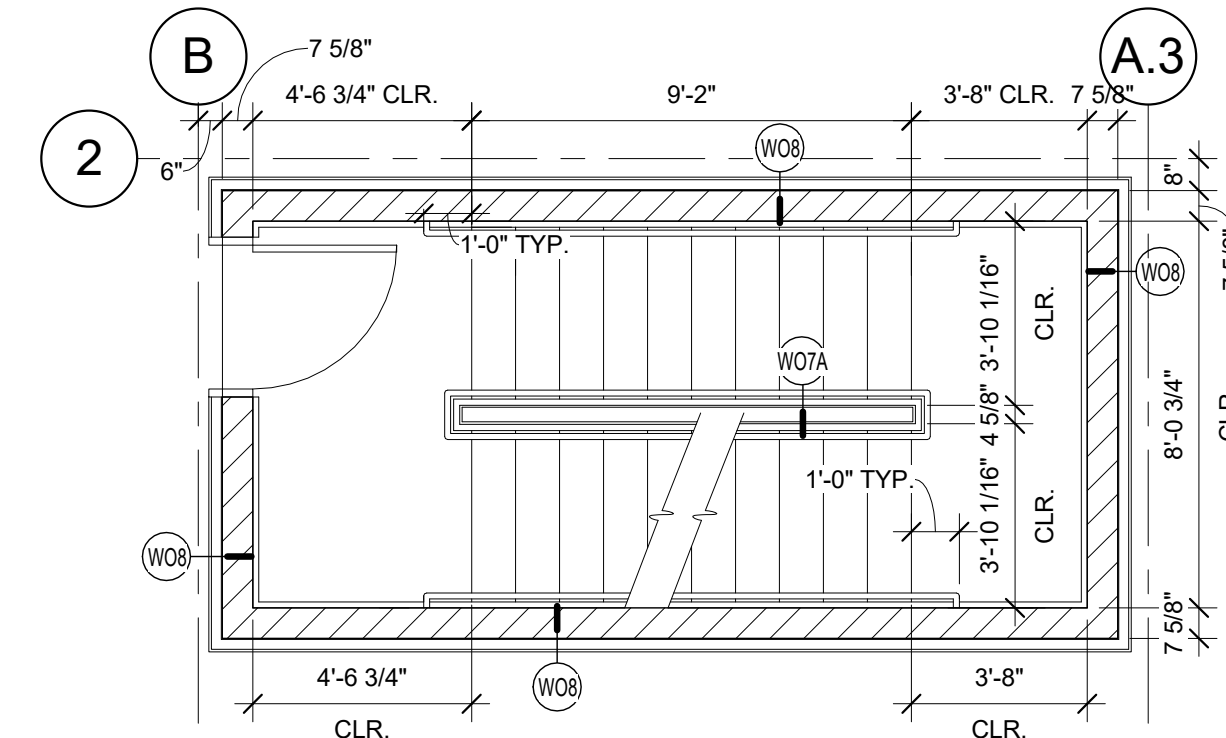
6 SECTION AT STAIR B
1/4" = 1'-0"



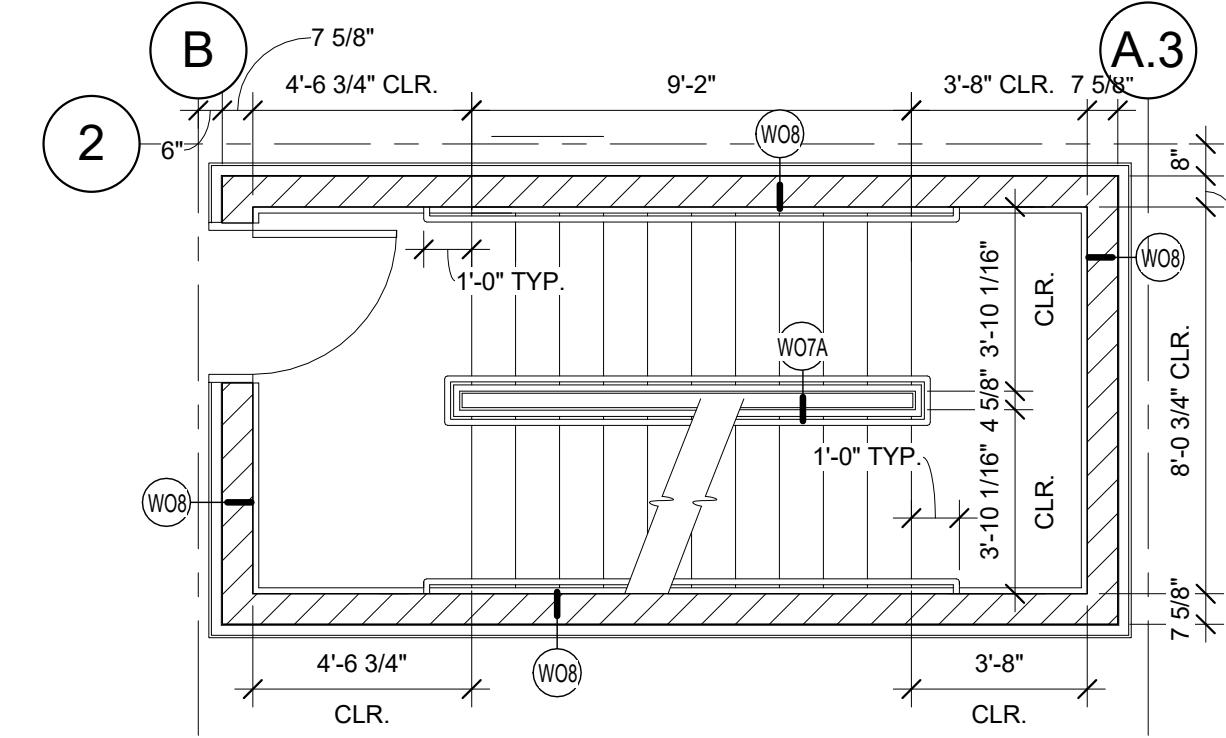
5 FIFTH FLOOR PLAN AT STAIR B
1/4" = 1'-0"



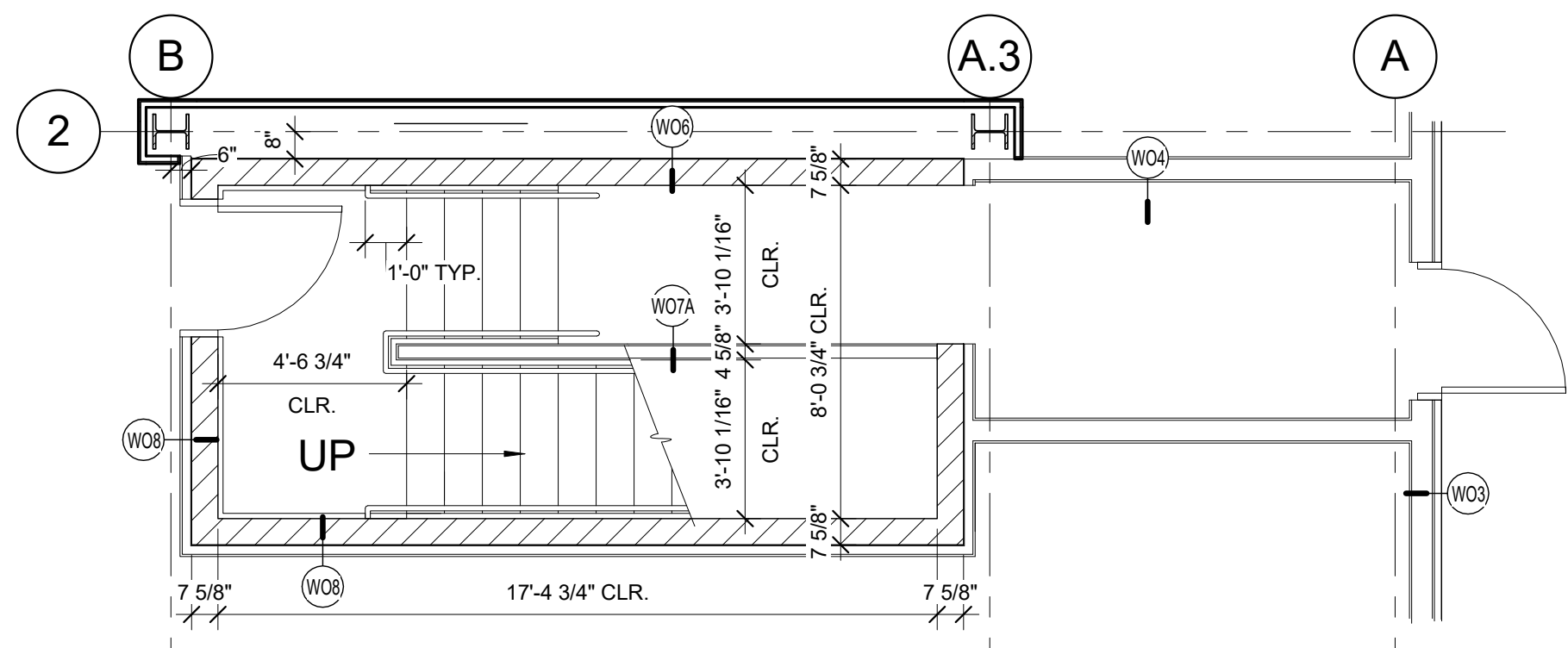
4 FOURTH FLOOR PLAN AT STAIR B
1/4" = 1'-0"



3 THIRD FLOOR PLAN AT STAIR B
1/4" = 1'-0"

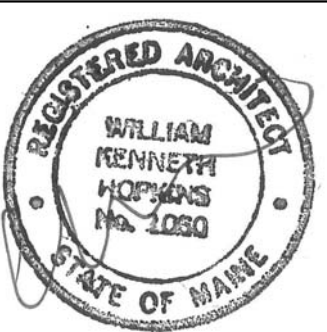


2 SECOND FLOOR PLAN AT STAIR B
1/4" = 1'-0"



1 FIRST FLOOR PLAN AT STAIR B
1/4" = 1'-0"

06.03.15 - FOR PERMIT



Prepared For:
16 Middle Street Associates, LLC
Address: 16 Middle Street
City, State: Portland, Maine

Consultant:
ARCHETYPE architects
48 Union Wharf Portland, Maine 04101
(207) 772-0022 ARCHETYPE@ARCHETYPEPA.COM

Project:
16 Middle Street
16 Middle Street
Portland, Maine

Revisions:
Scale: As indicated
Date: June 3, 2016
Stair Sections and Details

A3.13