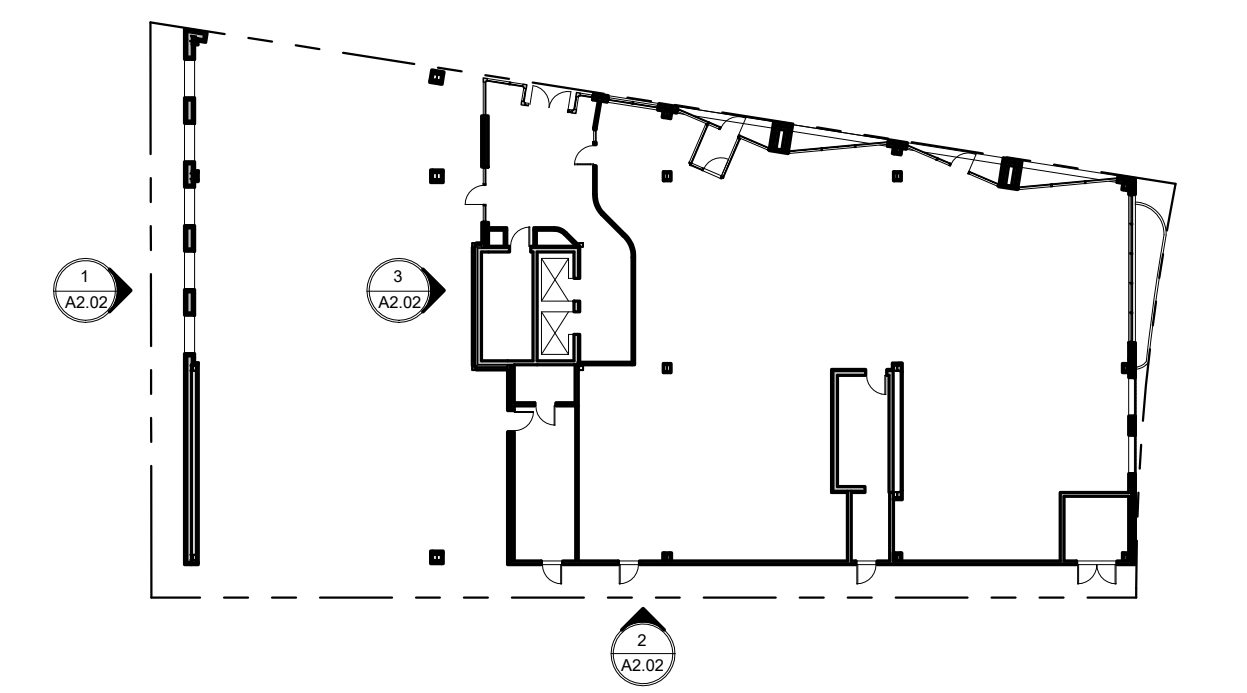
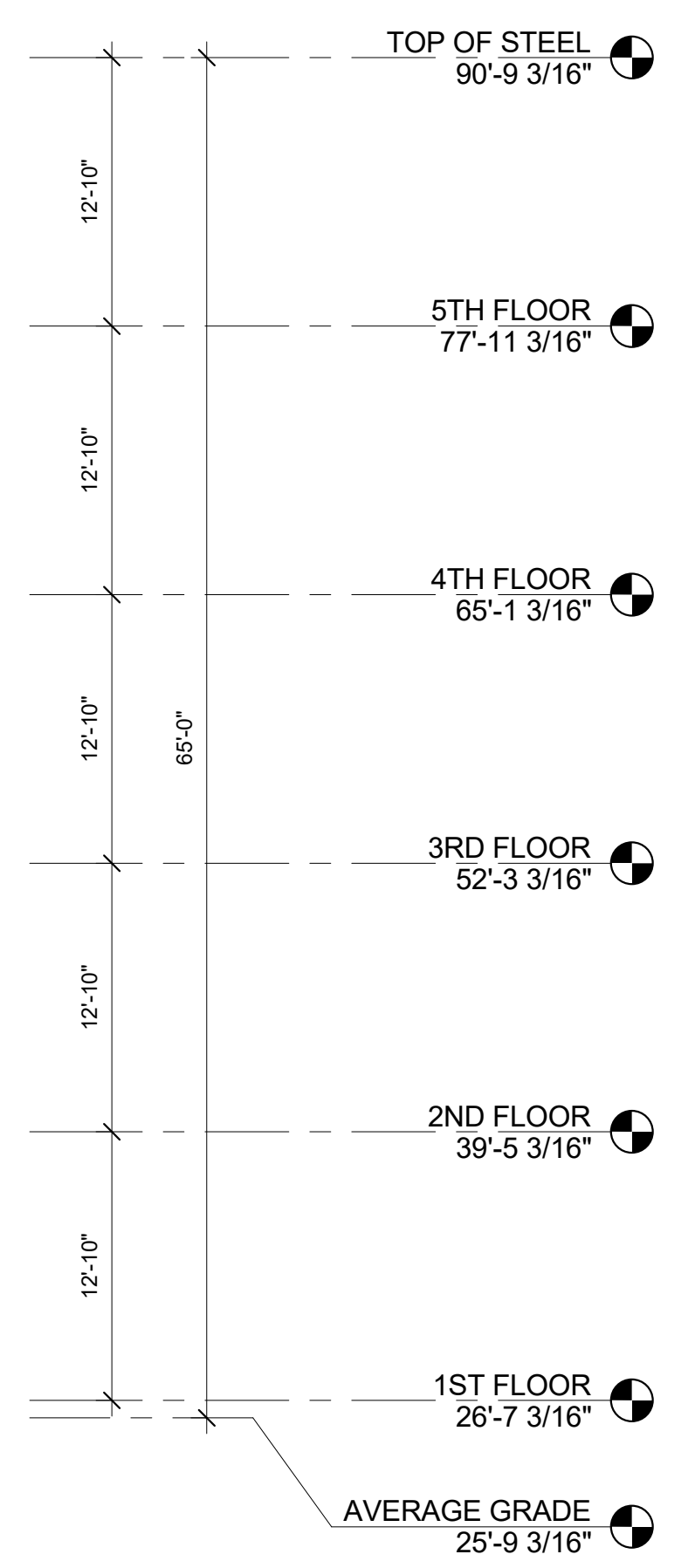


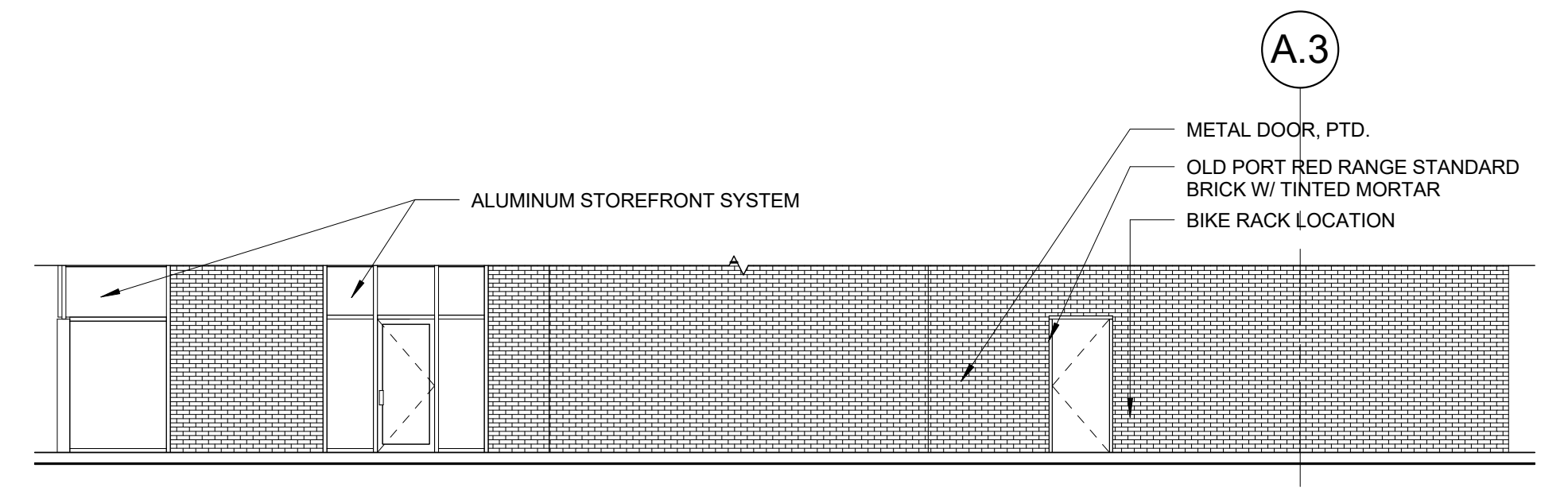
1 West Elevation  
1/8" = 1'-0"

2009 INTERNATIONAL BUILDING CODE - TABLE 705.8

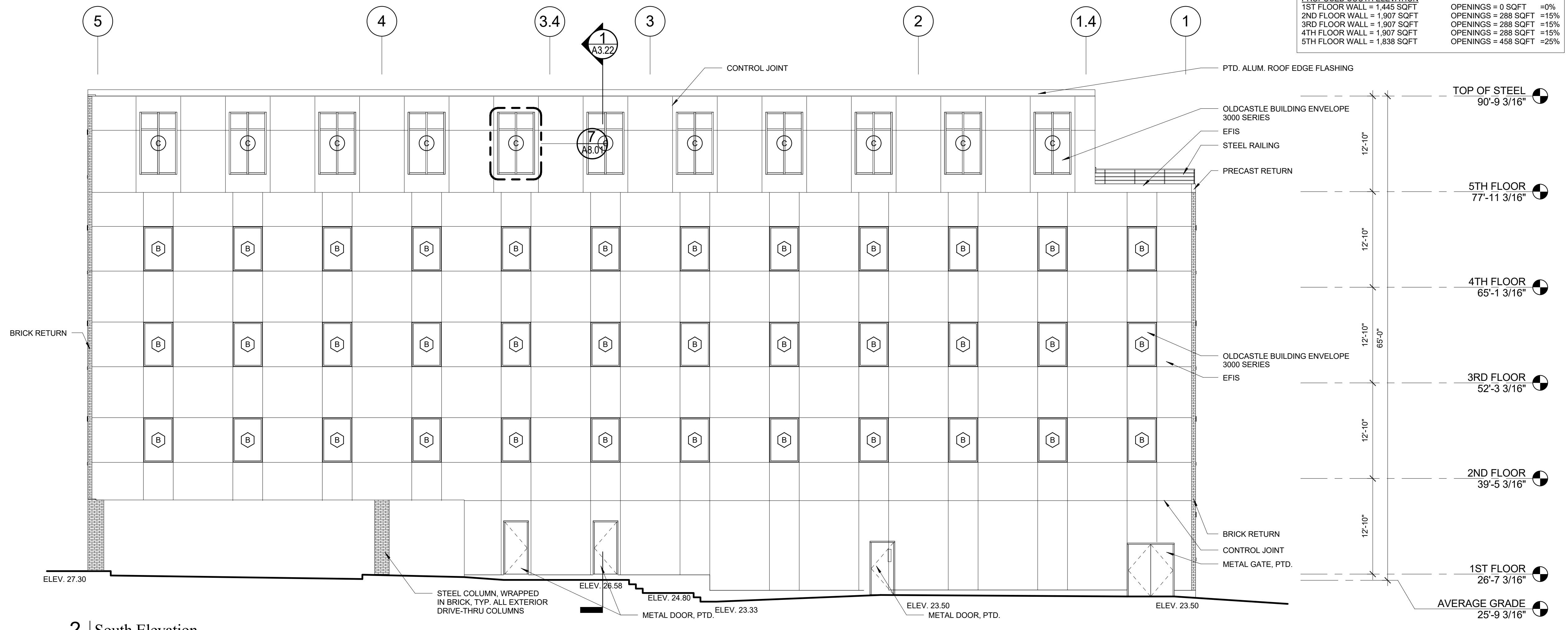
| PROPOSED SOUTH ELEVATION    | OPENINGS = | =%  |
|-----------------------------|------------|-----|
| 1ST FLOOR WALL =            | 0          | 0%  |
| 2ND FLOOR WALL = 1,075 SQFT | 264        | 24% |
| 3RD FLOOR WALL = 1,075 SQFT | 264        | 24% |
| 4TH FLOOR WALL = 1,075 SQFT | 264        | 24% |
| 5TH FLOOR WALL = 1,162 SQFT | 290        | 25% |



3 KEY PLAN  
1" = 30'-0"



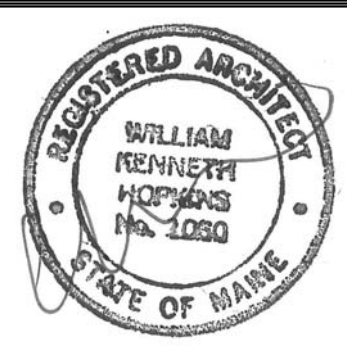
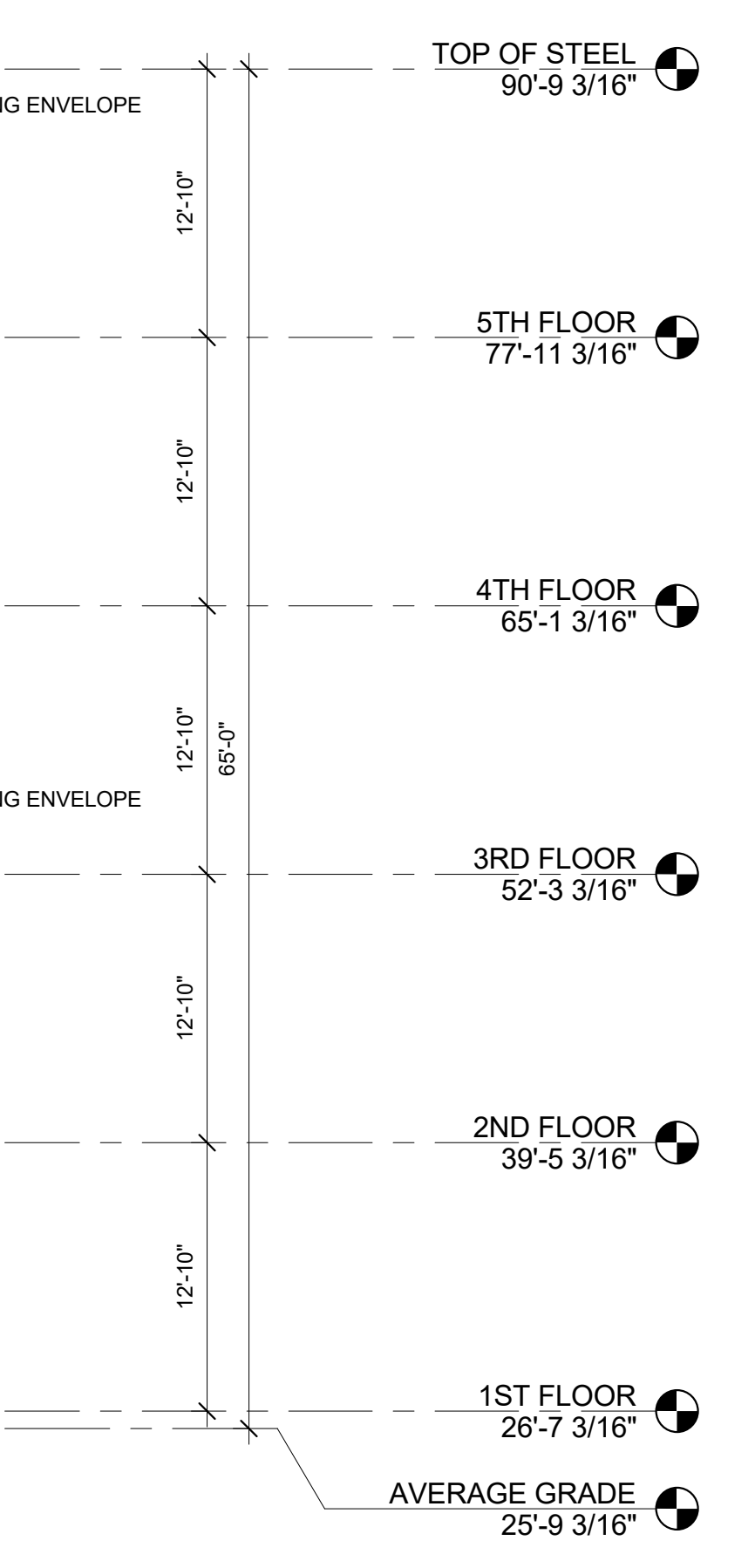
4 Elevation 3 - a  
1/8" = 1'-0"



2 South Elevation  
1/8" = 1'-0"

2009 INTERNATIONAL BUILDING CODE - TABLE 705.8

| PROPOSED SOUTH ELEVATION    | OPENINGS = | =%  |
|-----------------------------|------------|-----|
| 1ST FLOOR WALL = 1,445 SQFT | 0          | 0%  |
| 2ND FLOOR WALL = 1,907 SQFT | 288        | 15% |
| 3RD FLOOR WALL = 1,907 SQFT | 288        | 15% |
| 4TH FLOOR WALL = 1,907 SQFT | 288        | 15% |
| 5TH FLOOR WALL = 1,838 SQFT | 458        | 25% |



Prepared For:  
16 Middle Street  
Associates, LLC

Consultant:  
**ARCHETYPE**  
architects  
48 Union Wharf Portland, Maine 04101  
(207) 772-6022 ARCHETYPE@ARCHETYPEPA.COM

Project:  
16 Middle Street  
Portland, Maine

Revisions:

Date: June 3, 2016  
Scale: As indicated  
Building Elevations

A2.02