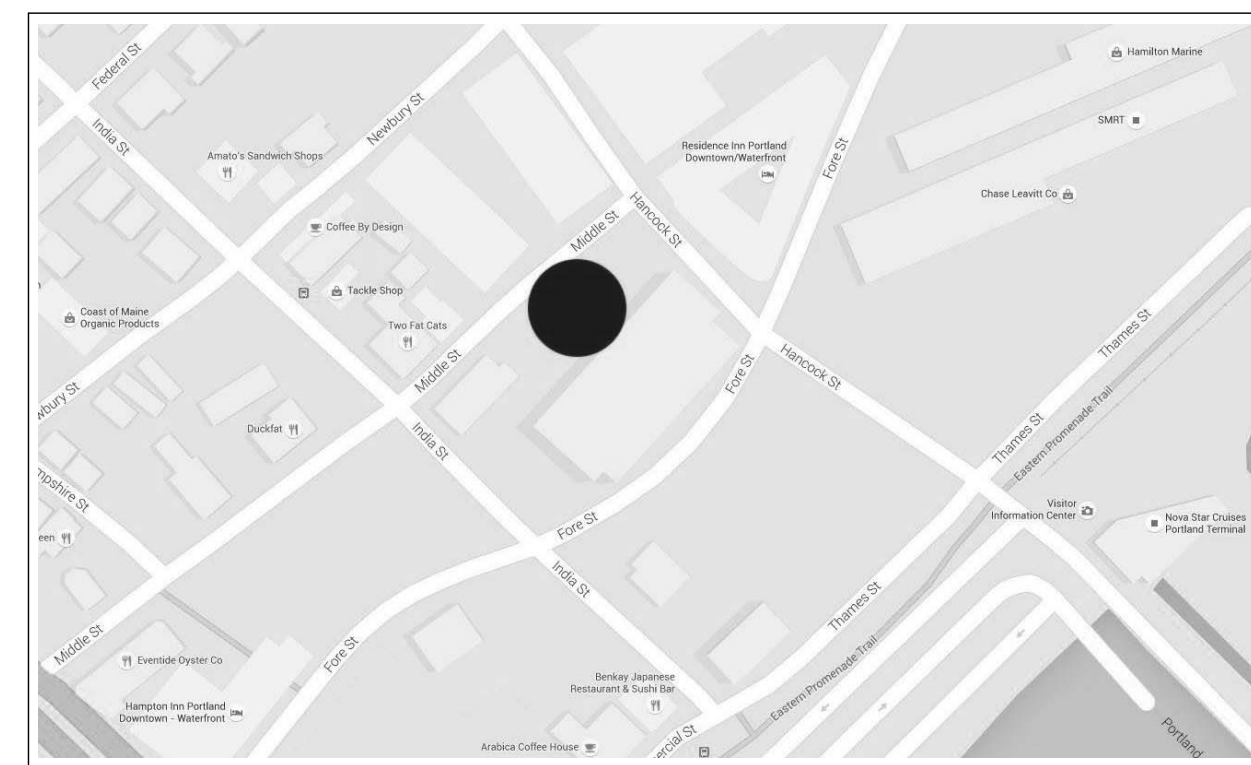


# 16 MIDDLE

## 16 MIDDLE ST PORTLAND, MAINE

### DATE OF ISSUE

SUBMISSION - DATE



LOCATION MAP NOT TO SCALE

### CONTACTS

**Client:**  
16 Middle St. Associates,  
LLC  
470 Fore Street,  
Suite 400  
Portland ME,  
04101

**Architect:**  
Archetype Architects  
48 Union Wharf  
Portland, ME  
04101  
207.772.6022  
xxxxx

**Structural Engineer:**  
Veitas and Veitas  
639 Granite Street  
Suite 101  
Braintree, MA  
02184  
781.843.2863

**Electrical Engineer:**  
Bennett Engineering  
7 Bennett Road  
Freeport, ME  
04032  
207.865.9475

**Mechanical Engineer:**  
Bennett Engineering  
7 Bennett Road  
Freeport, ME  
04032  
207.865.9475

**Civil Engineer:**  
Stantec  
778 Main Street  
Suite 8  
South Portland, ME  
04106  
207.775.1121



### RELEVANT CODES

#### NFPA 101

**New Business Occupancy Chapter 38**  
Building construction is II (000) and I (332)  
1st floor occupancies are **separated** from floors 2 - 5

**1st Floor**  
Potential use for Business, Assembly, Mercantile or Storage  
Existing Use - For parking garage entry drive

**2nd - 5th Floors**  
Business Use

Ordinary Hazard 38.1.5  
Min. construction requirements 38.6

#### Occupant Load

**1st Floor potential occupant load**  
Largest potential occupant load is from assembly use  
2,228 sqft / 100 sqft/person = 22  
4,456 sqft / 15 sqft/person = 297

**2nd - 5th Floors occupant load**  
10,712 sqft / 200 sqft/person = 53

Means of egress shall be per Chapter 7

Stairs to comply w/7.2.3

Alternating tread devices permitted

Area of refuge not required w/sprinkler

Capacity of means of egress

53 occupants x .37ft. = 16"

Min. corridor width = 44"

Street floor exits shall be sufficient for street

floor load plus stair load

2 exits accessible from every part of every story

Arrangement of means of egress

Exits at 1/3 diagonal 38.2

Dead ends = 50ft w/sprinkler 38.2.3.1

Common path = 100' w/sprinkler 38.2.2.11

Travel distance = 300' w/sprinkler 38.2.2.12

Emergency lighting required 38.2.3.1

Vertical openings = 2 hours 38.2.3.2

Interior finish 38.2.3.3

Exits and exit access corridors Class A or B 38.2.4.1

Interior walls and ceilings Class C 38.2.5

Floor Finish 7.5.1.3.3

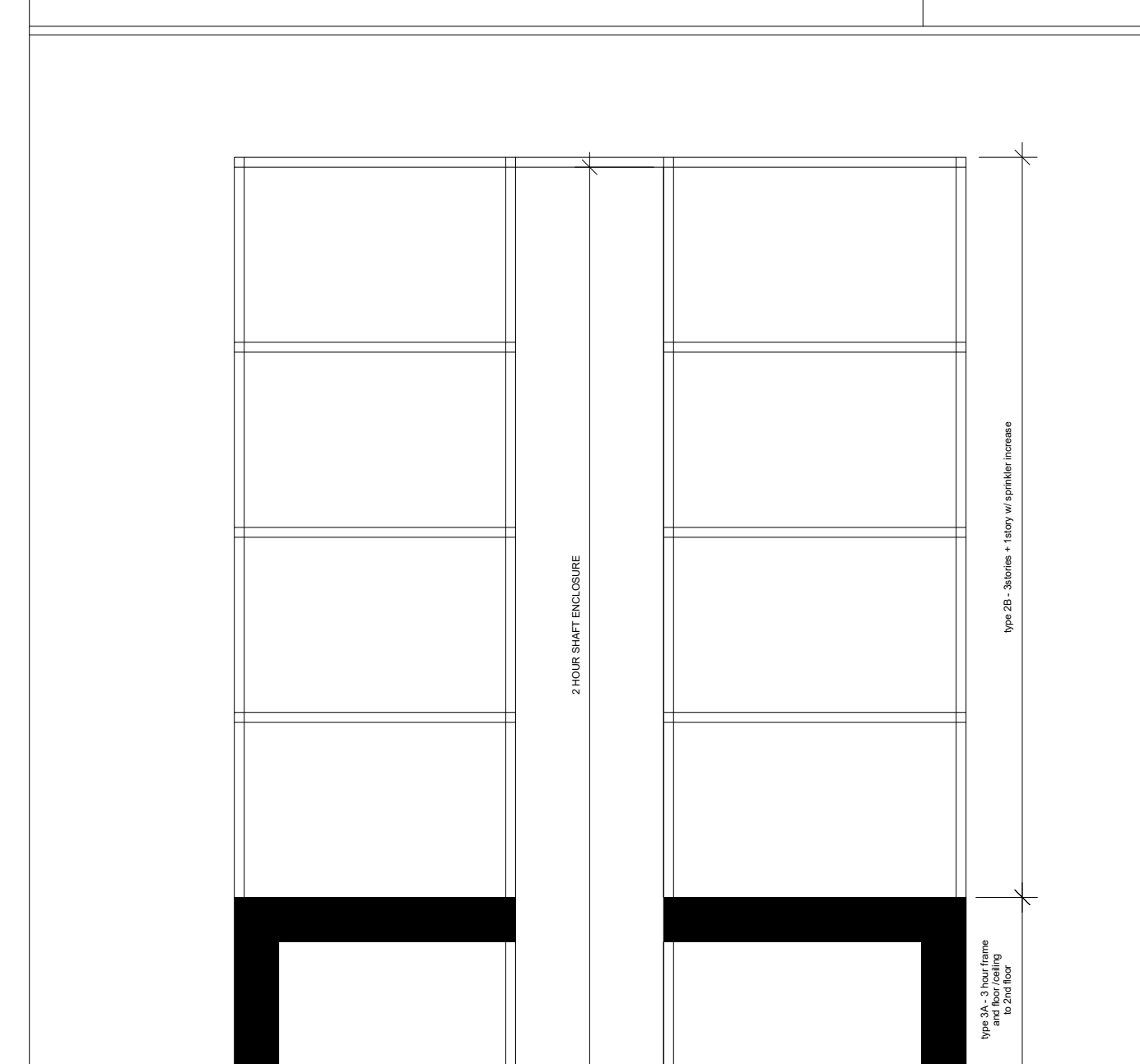
In exits Class 1 or 2 38.2.5.2.1

Alarm required 38.2.5.3.2

Initiation by sprinkler 38.2.6.3

Portable extinguishers required per 9 38.2.9

No corridor rating required w/sprinkler 8.6.5



### DRAWING LIST

GENERAL  
AC0.1 COVER SHEET  
CS1.2 CODE SUMMARY

CIVIL DRAWINGS  
C1.1 General Notes and Legend  
C2.0 Boundry and Topographic Survey  
C2.1 Amended Recording Plat  
C2.2 Existing Conditions and Demolition Plan  
C2.3 Construction Management Plan  
C3.0 Site Layout Plan  
C4.0 Grading, Drainage and Erosion Control Plan  
C5.0 Utility Plan  
C6.0 Pavement, Curb and Sidewalk Details  
C6.1 Utility and Miscellaneous Details  
C6.2 Utility and Miscellaneous Details  
L1.0 Landscape Plan

STRUCTURAL DRAWINGS  
S1.01 Foundation Plan  
S1.02 Second Floor Framing Plan  
S1.03 Third Floor Framing Plan  
S1.04 Fourth Floor Framing Plan  
S1.05 Fifth Floor Framing Plan  
S1.06 Roof Framing Plan  
S2.01 General Notes  
S2.02 Typical Details  
S2.03 Typical Details  
S2.04 Typical Details  
S2.05 Typical Details  
S2.06 Typical Details  
S3.01 Column Schedule and Pier Details  
S3.02 Brace Framing Elevations and Details  
S4.01 Foundation Sections and Details  
S5.01 Steel Sections and Details

ARCHITECTURAL DRAWINGS  
A1.01 First Floor Plan  
A1.02 Second Floor Plan  
A1.03 Third Floor Plan  
A1.04 Fourth Floor Plan  
A1.05 Fifth Floor Plan  
A1.06 Roof Plan  
A2.01 Building Elevations  
A2.02 Building Elevations  
A3.01 Building Sections  
A3.11 Elevator Section and Details  
A3.12 Stair Sections and Details  
A3.13 Stair Sections and Details  
A3.21 Wall Sections  
A3.22 Wall Sections  
A3.23 Wall Sections  
A4.00 Wall Types  
A4.01 Floor, Ceiling, Roof Types  
A5.00 Details  
A5.01 Details  
A7.01 RCP - First Floor  
A8.01 Door and Window Schedule  
A8.03 Precast Schedule

ELECTRICAL DRAWINGS  
E1.1 First Floor Electrical Plan  
E1.2 Typical Floor Electrical Plan  
E1.3 Roof Electrical Plan  
E1.4 Notes, Abbreviations and Symbols

MECHANICAL DRAWINGS  
M1.01 HVAC First Floor Plan  
M1.02 HVAC 2,3,4 Floor Plans  
M1.03 HVAC Fifth Floor Plan  
M1.04 HVAC Roof Plan  
M2.01 Mechanical Details and Legend