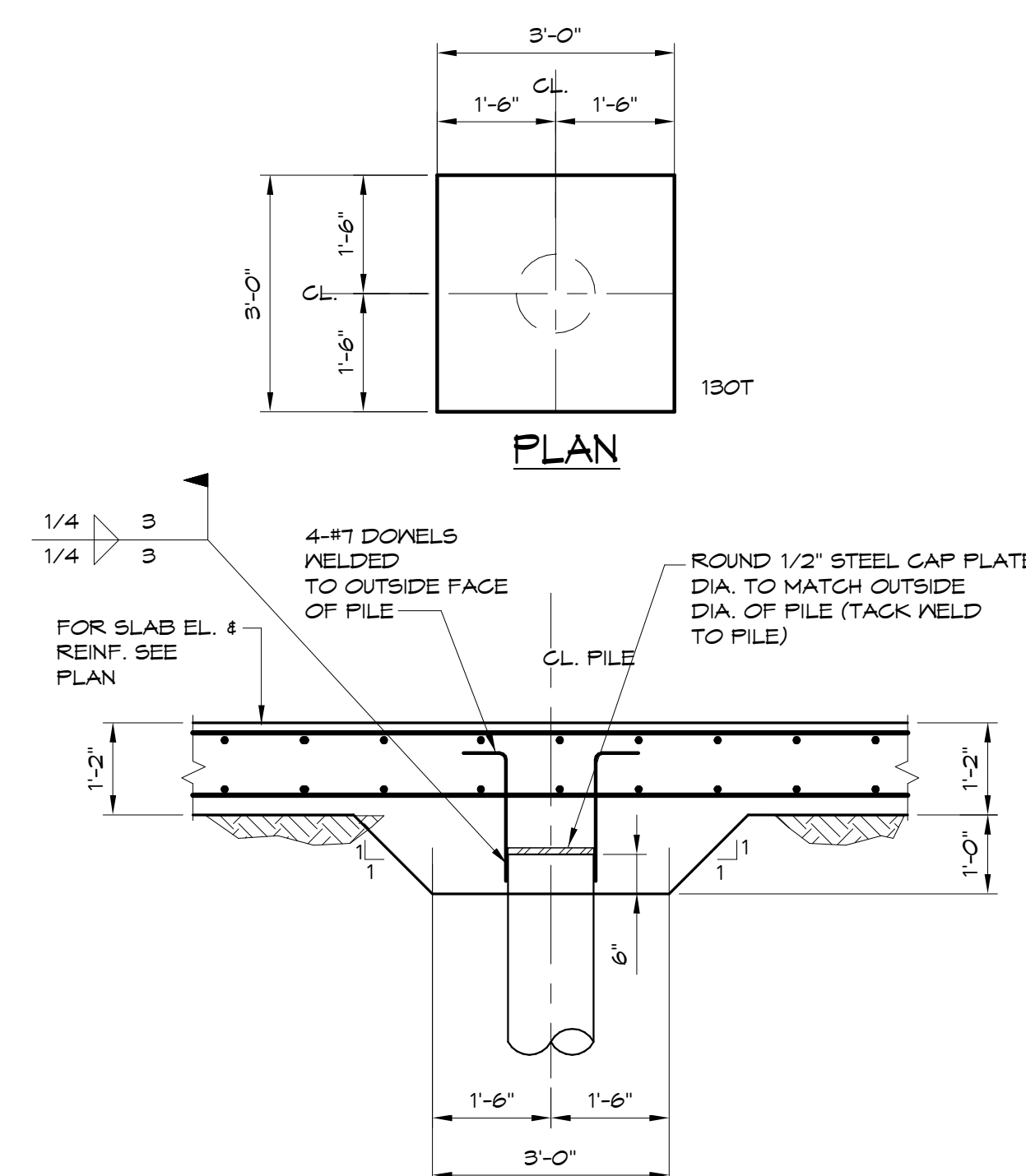
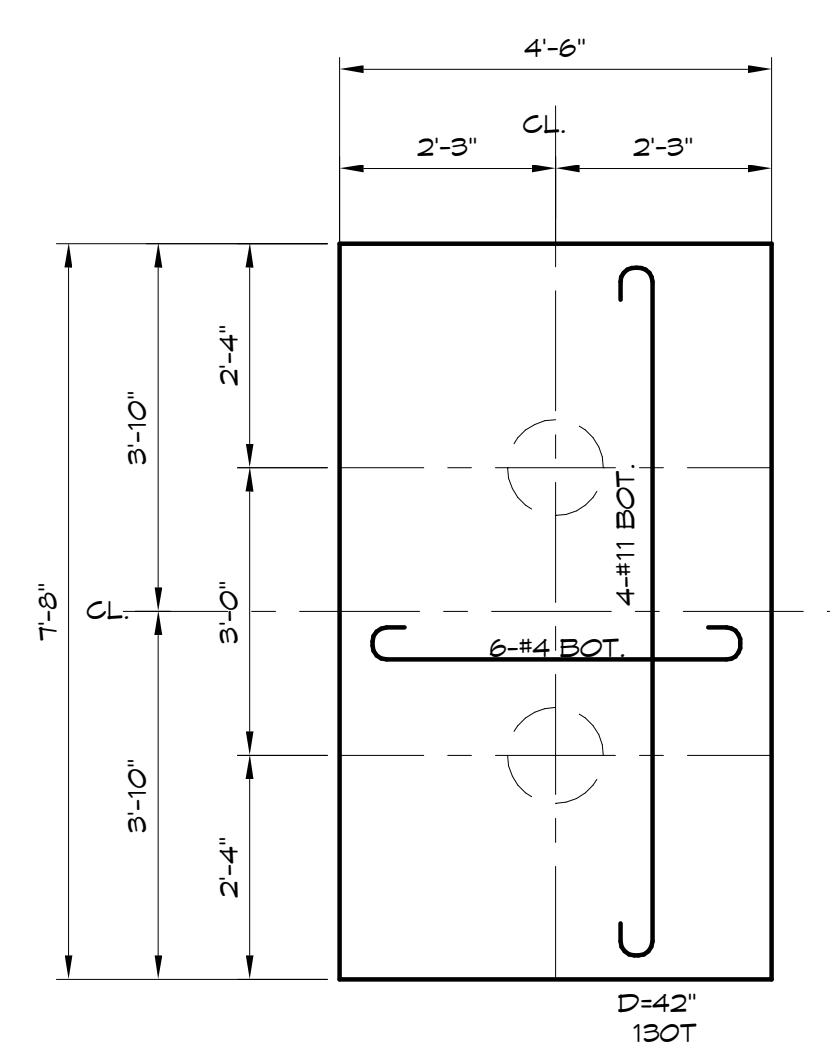


NOTE:  
1. CONTRACTOR SHALL SUBMIT PROPOSED LOCATIONS OF CONSTRUCTION JOINTS TO THE STRUCTURAL ENGINEER FOR APPROVAL.

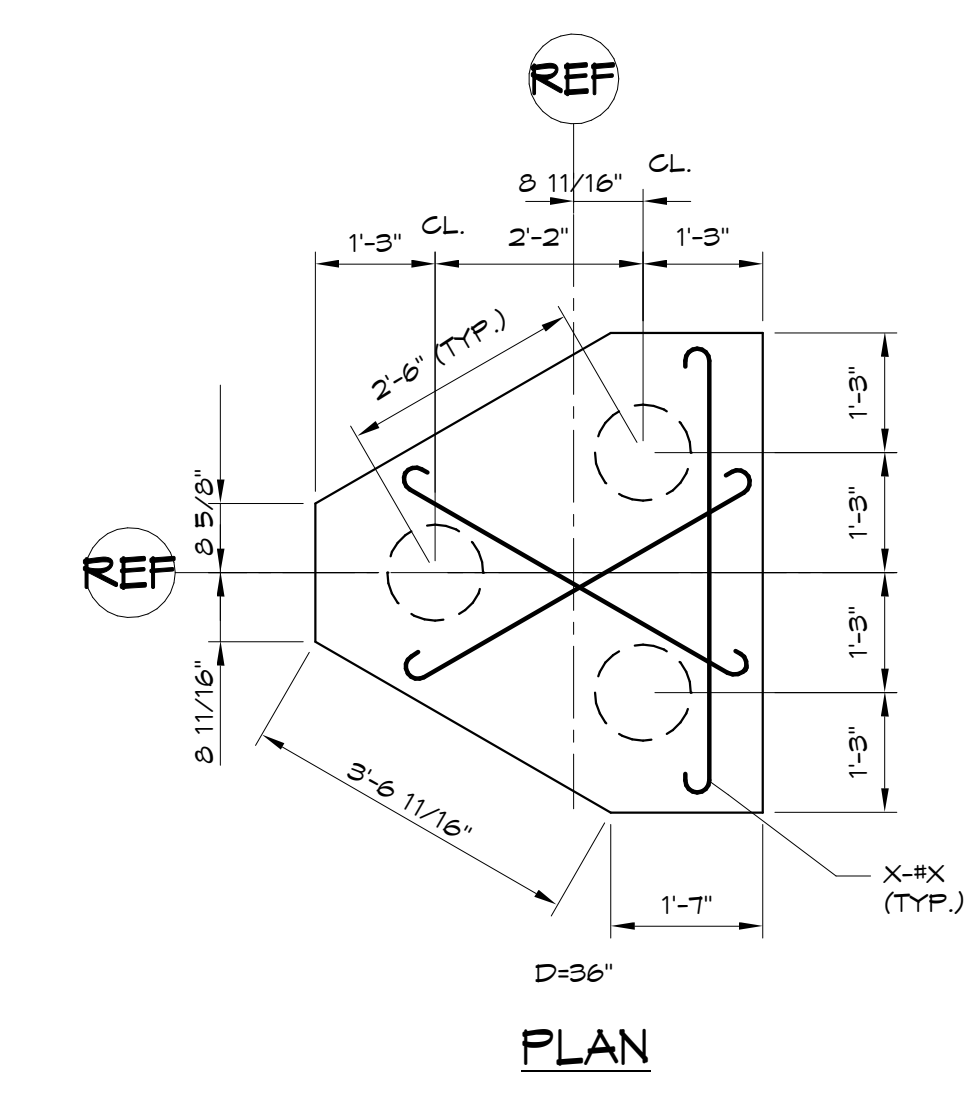
**1** TYPICAL DETAIL - CONCRETE BEAM CONSTRUCTION JOINT  
1" = 1'-0"



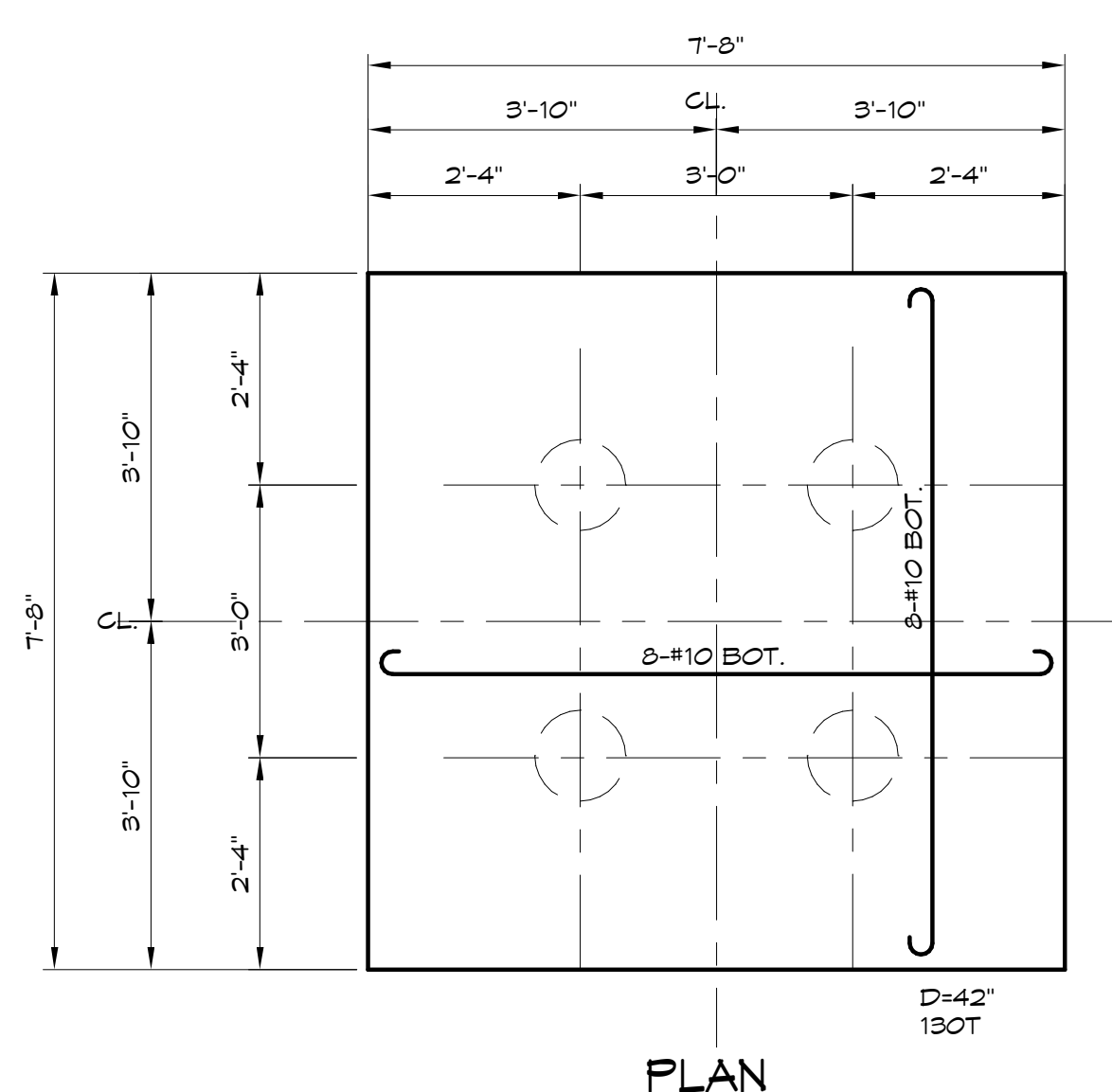
**2** FILE CAP - PC1  
1/2" = 1'-0"



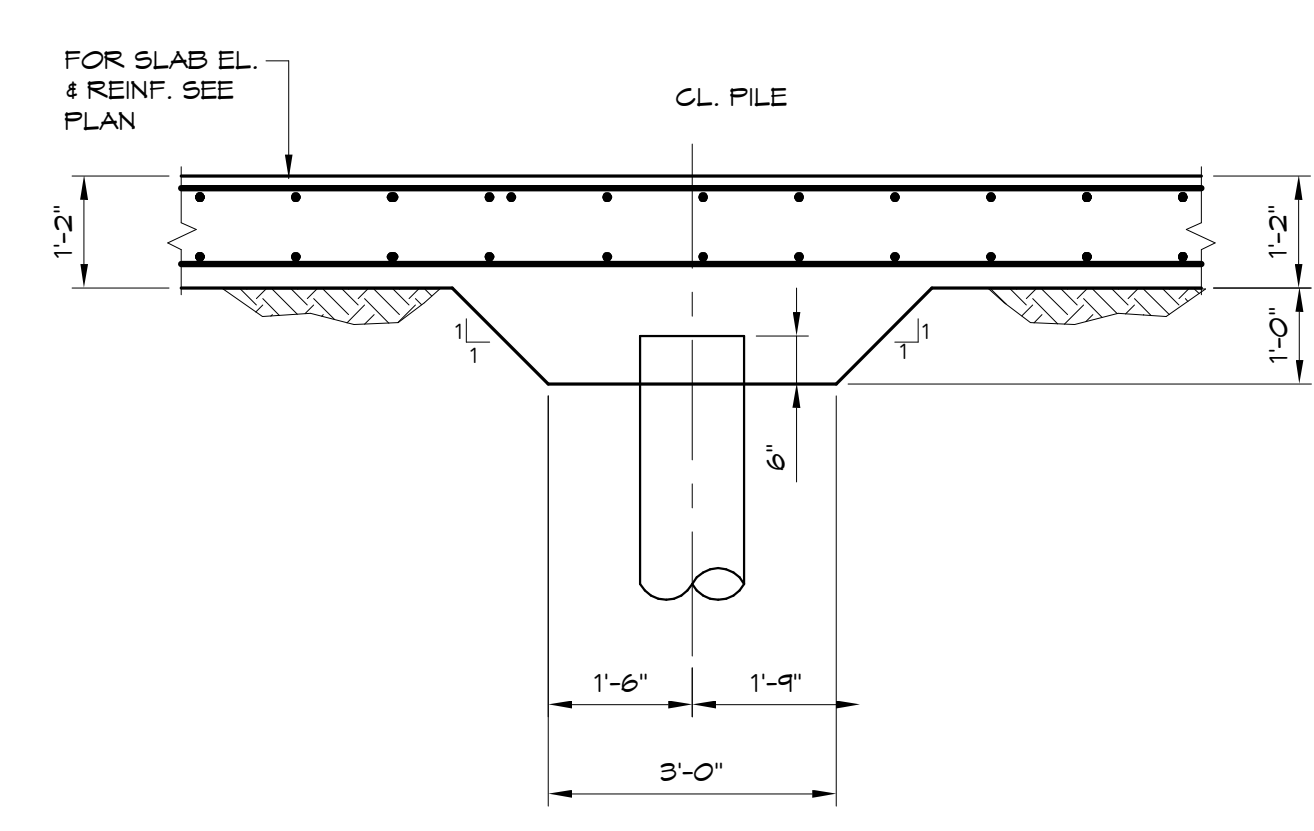
**3** FILE CAP - PC2  
1/2" = 1'-0"



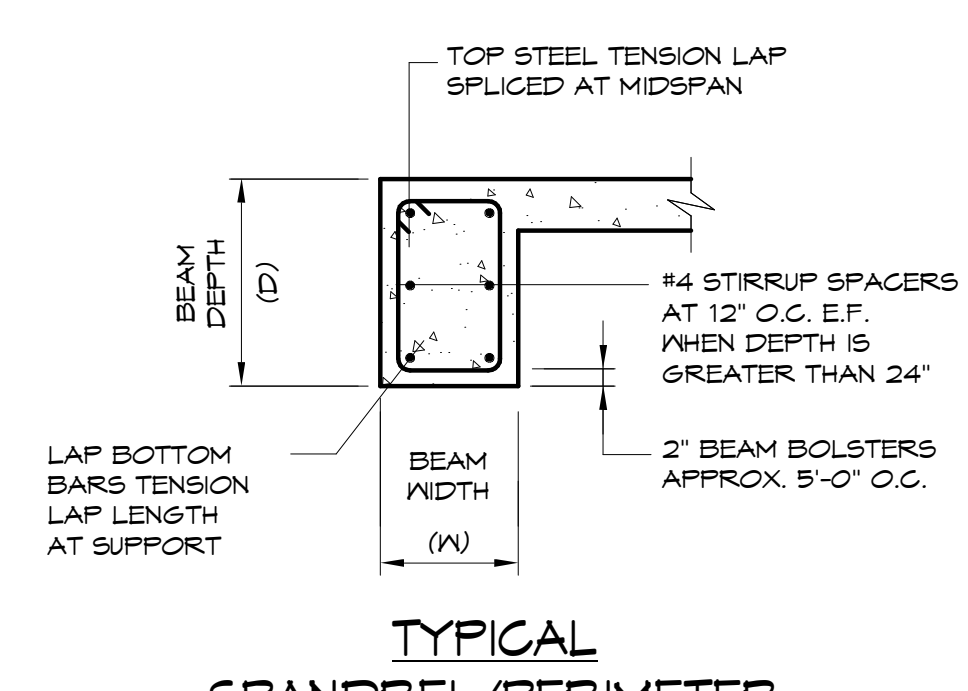
**4** File Cap 3  
1/2" = 1'-0"



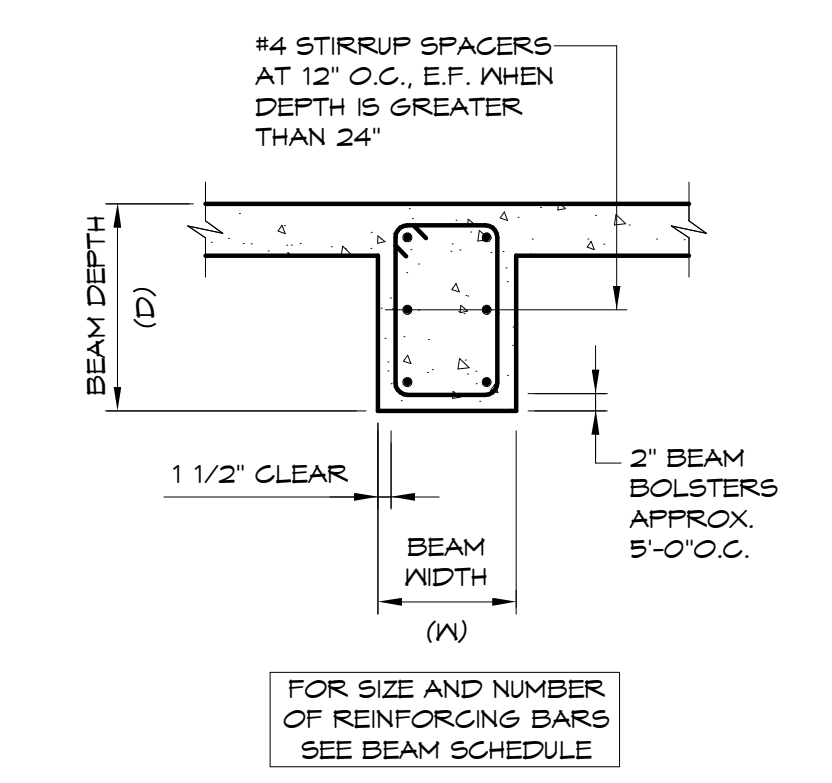
**5** FILE CAP - PC4  
1/2" = 1'-0"



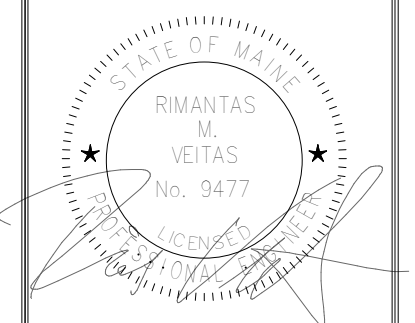
**6** SECTION  
1/2" = 1'-0"



**7** TYPICAL SPANDREL/PERIMETER BEAM SECTION  
3/4" = 1'-0"



**8** TYPICAL BEAM SECTION  
3/4" = 1'-0"



Prepared For:  
**BATEMAN PARTNERS, LLC**  
Portland, ME 04112

Consulting Engineer:  
**VEITAS ENGINEERS**  
638 Granite Street, Suite 1014  
Business, Scarborough, ME 04107  
Tel: (708) 266-2800 Fax: (708) 266-2805

Architect:  
**ARCHETYPE architects**  
48 Union Wharf Portland, Maine 04101  
(207) 772-6022 Fax (207) 772-4056

Project:  
**16 MIDDLE STREET**  
MIDDLE STREET  
PORTLAND, MAINE

Revisions:
01/15/16 ISSUED FOR FDN. PERMIT

Date: 01/15/16  
Scale:  
**TYPICAL DETAILS**

**S2.04**