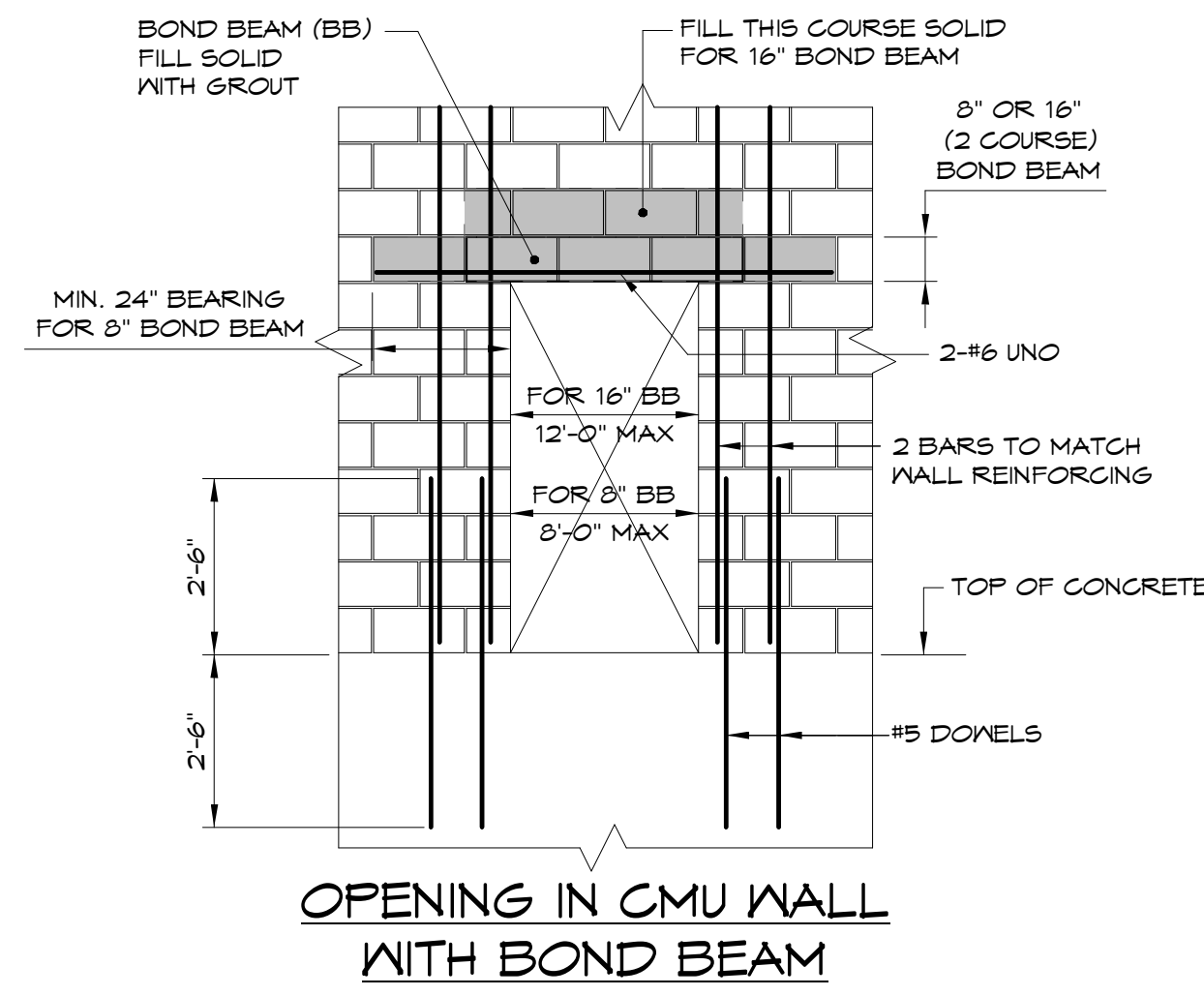
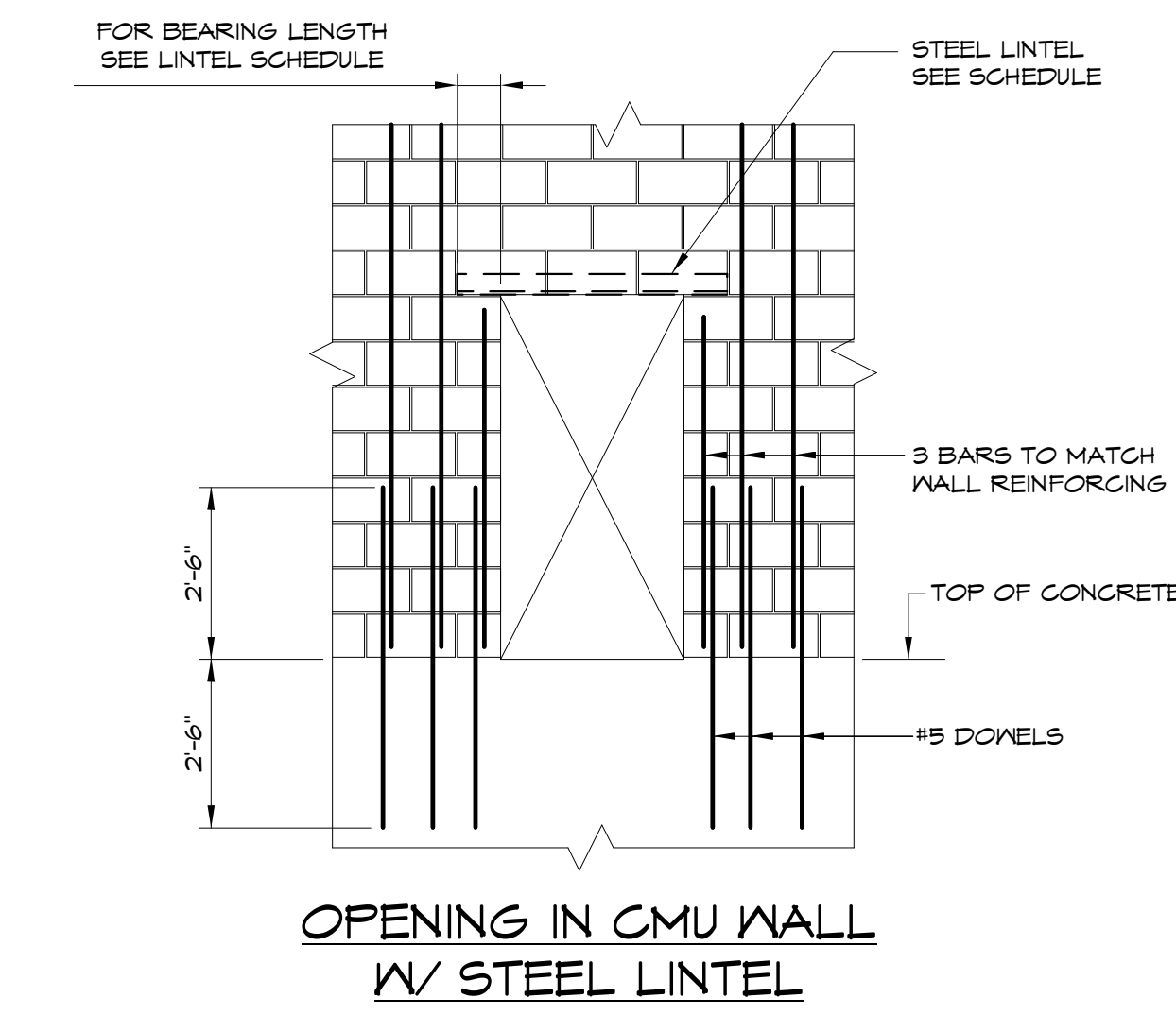


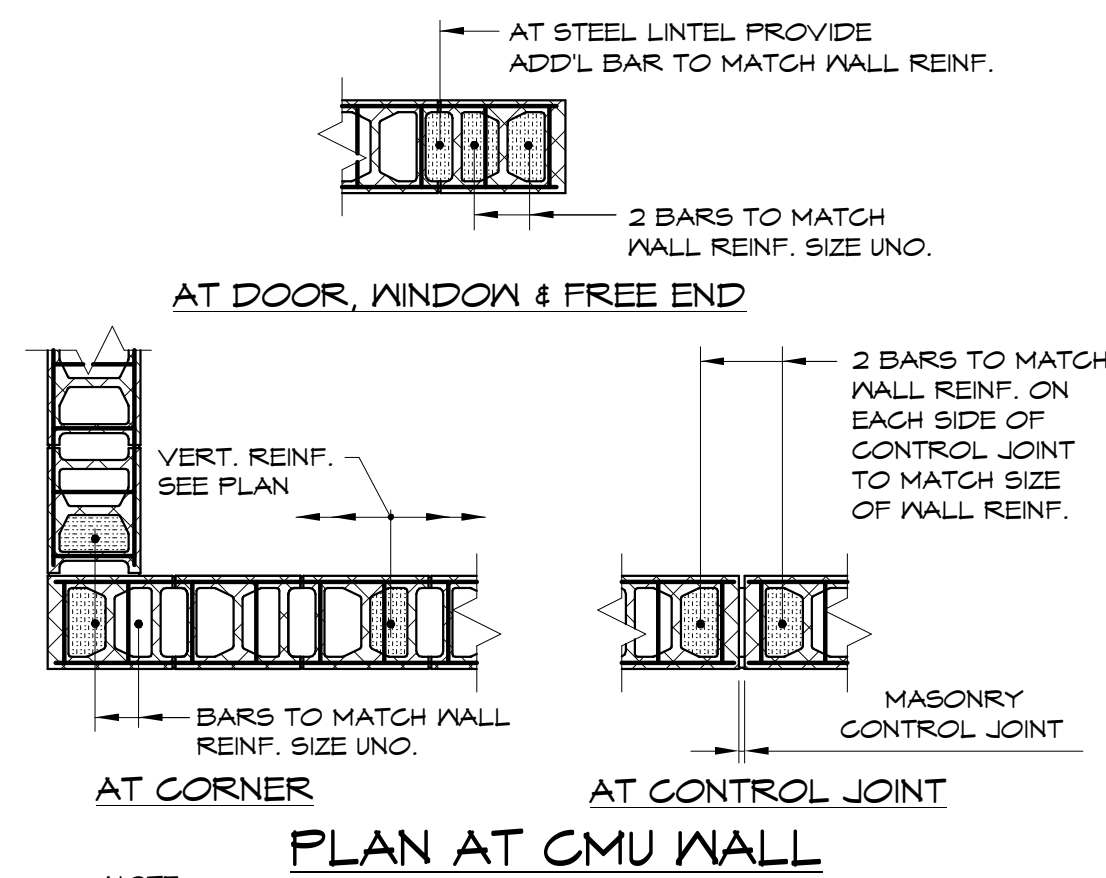
2 typm-01  
3/4" = 1'-0"



3 typm-01a  
3/4" = 1'-0"



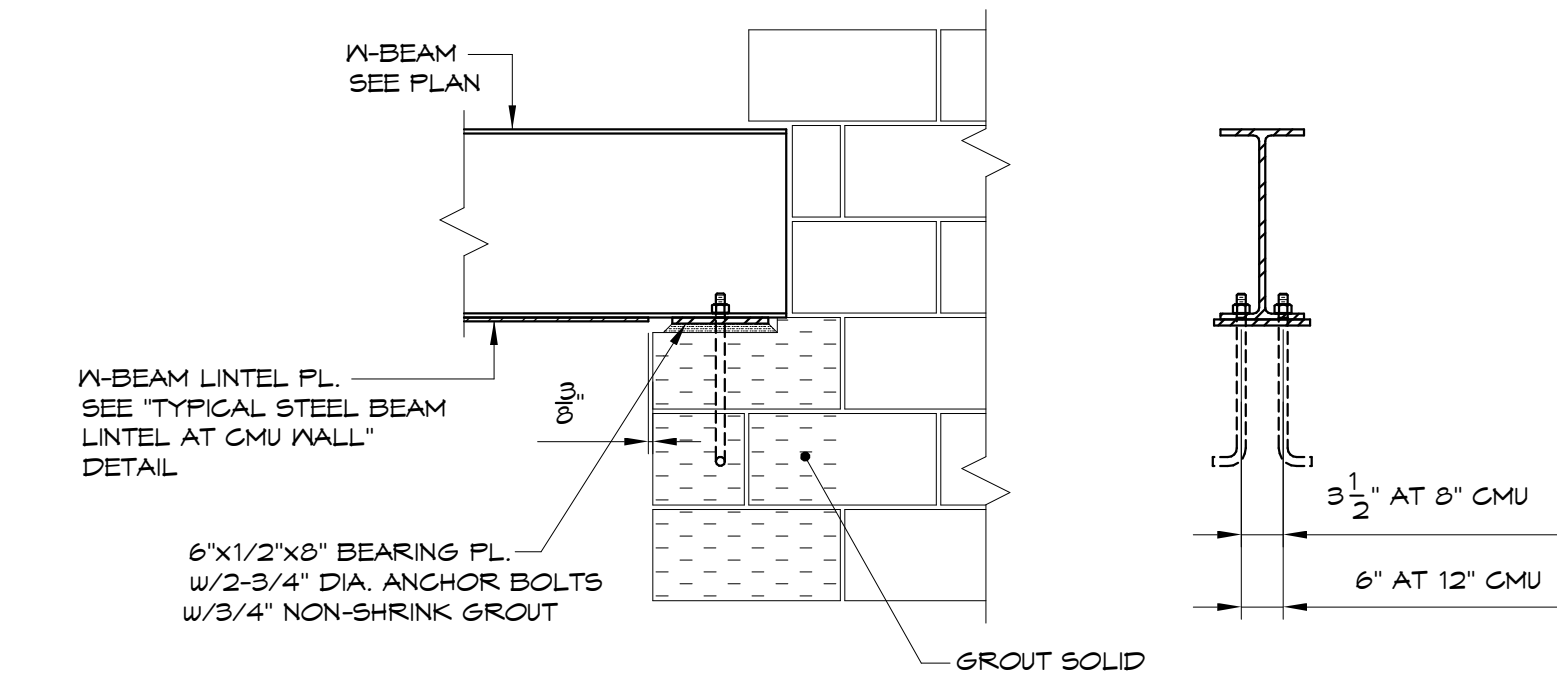
4 typm-02  
3/4" = 1'-0"



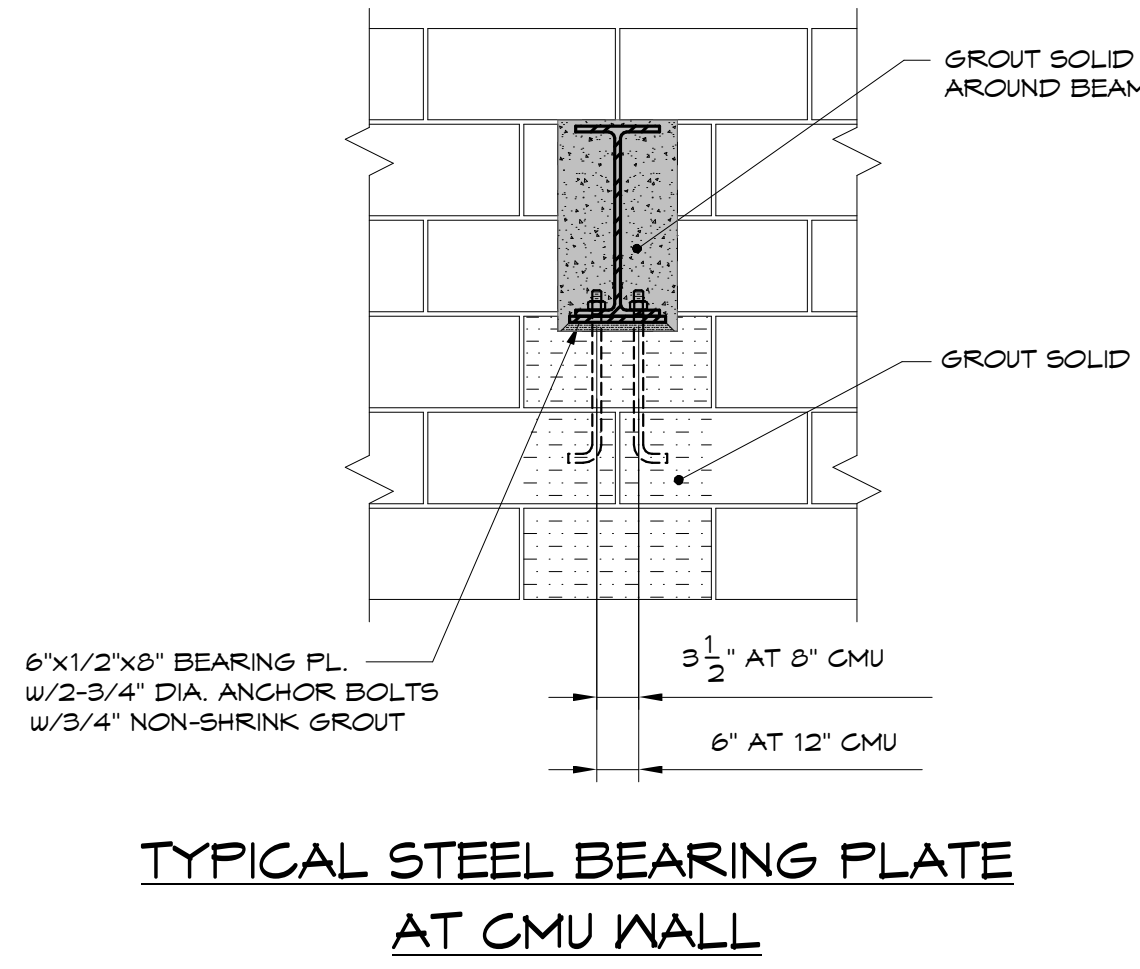
5 typm-05  
1/2" = 1'-0"

LOOSE LINTEL SCHEDULE			
OPENING	LINTEL	BEARING EACH END	REMARKS
3'-6" OR LESS	∠3½x3½x¼	4"	---
OVER 3'-6" THRU 5'-6"	∠4x3½x¼	6"	LLV
OVER 5'-6" THRU 7'-6"	∠6x3½x¼	6"	LLV
OVER 7'-6" THRU 9'-6"	∠8x3½x¼	6"	LLV

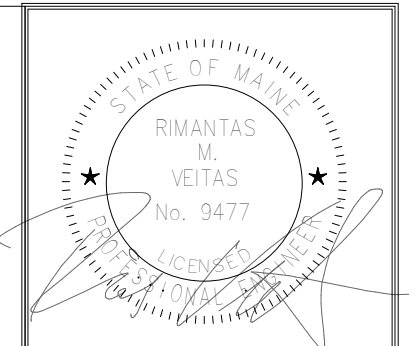
- NOTES:
- WHERE ANGLE LINTELS ARE REQUIRED PROVIDE ONE ANGLE FOR EACH 4" OR LESS THICKNESS OF MASONRY.
  - FOR OPENINGS OVER 6'-0" PROVIDE SOLID MASONRY JAM UNDER LINTEL AT EACH SIDE OF OPENING.
  - LINTELS INDICATED ON PLAN SUPERSEDE THE REQUIREMENTS OF THIS SCHEDULE.
  - ALL EXTERIOR LINTELS SHALL BE HOT DIP GALVANIZED.
  - ALL OTHER LINTELS SHALL BE PRIME PAINTED.
  - FOR LINTELS IN LOAD BEARING WALL SEE "LOAD BEARING LINTEL SCHEDULE".



7 typm-16a  
3/4" = 1'-0"



8 typm-16c  
3/4" = 1'-0"



Prepared For:  
**BATEMAN PARTNERS, LLC**  
P.O. BOX 7486  
Portland, ME 04112

Consulting Engineer:  
**VEITAS VEITAS** engineers  
68 Granite Street, Suite 101  
Brewster, Massachusetts 02544  
Tel: (978) 686-7486 Fax: (978) 686-2006

Architect:  
**ARCHETYPE** architects  
48 Union Wharf Portland, Maine 04101  
(207) 772-6022 Fax (207) 772-4056

Project:  
**16 MIDDLE STREET**  
MIDDLE STREET  
PORTLAND, MAINE

Revisions:

01/15/16	ISSUED FOR FDN. PERMIT
----------	------------------------

Date: 01/15/16  
Scale:  
**TYPICAL DETAILS**