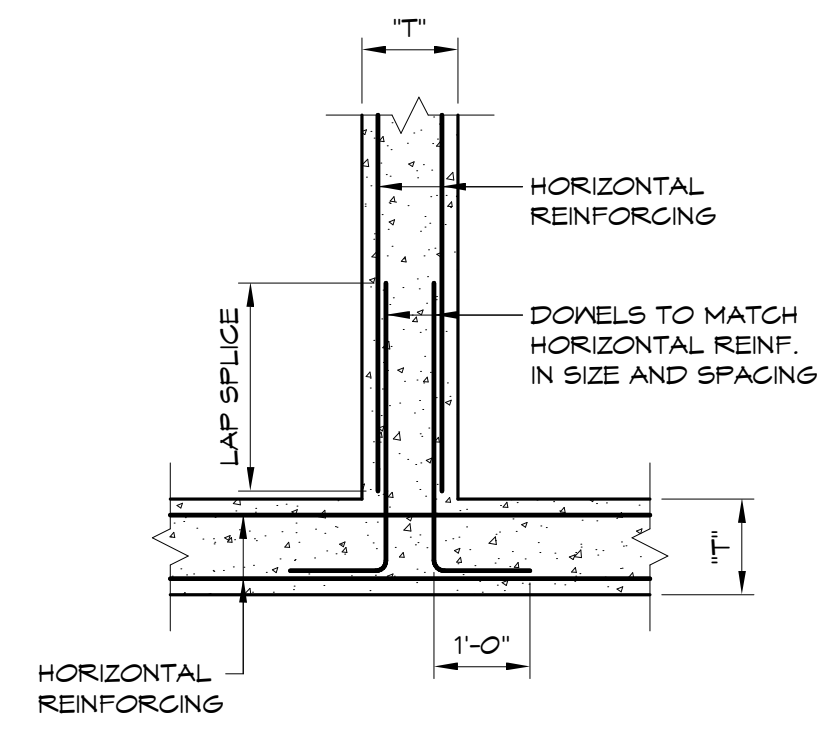
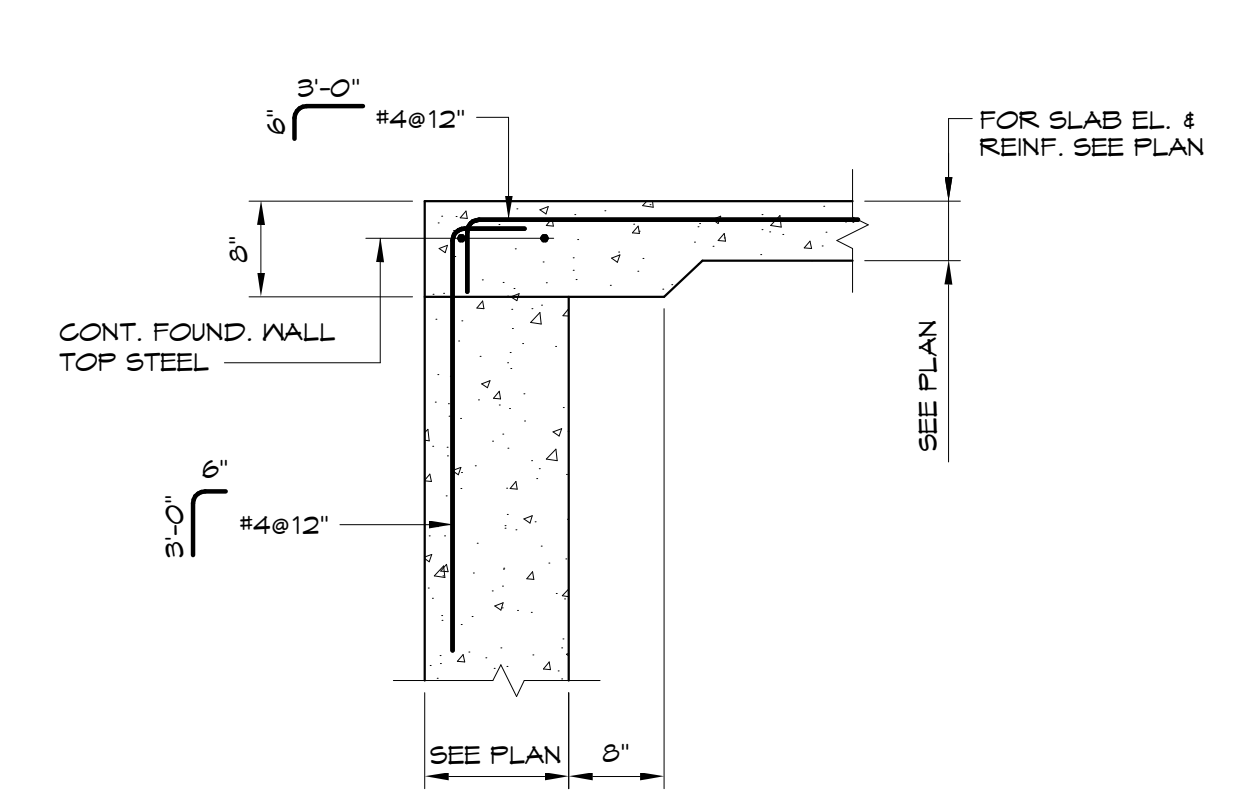


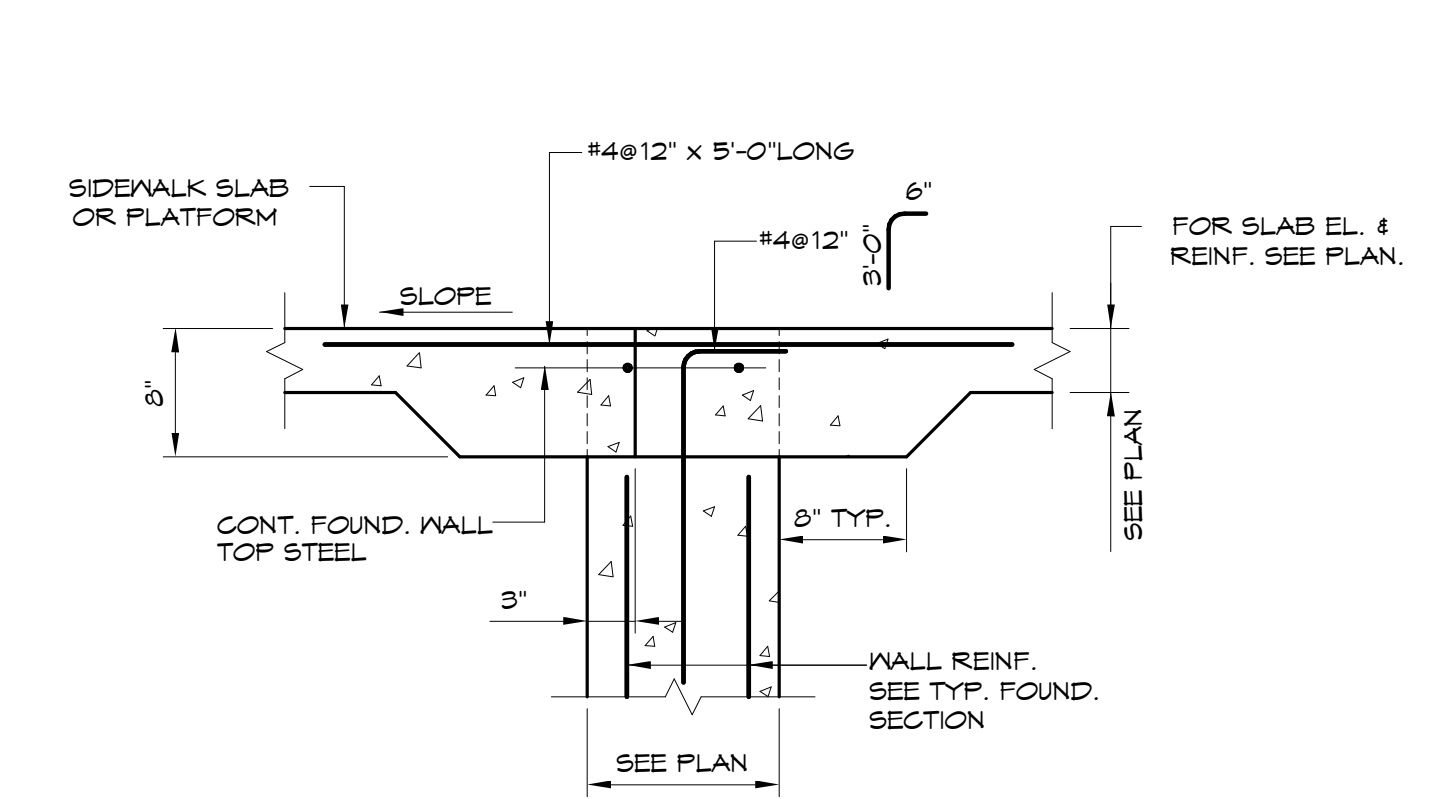
A HORIZONTAL REINFORCING OF CONCRETE WALLS
1/2" = 1'-0"



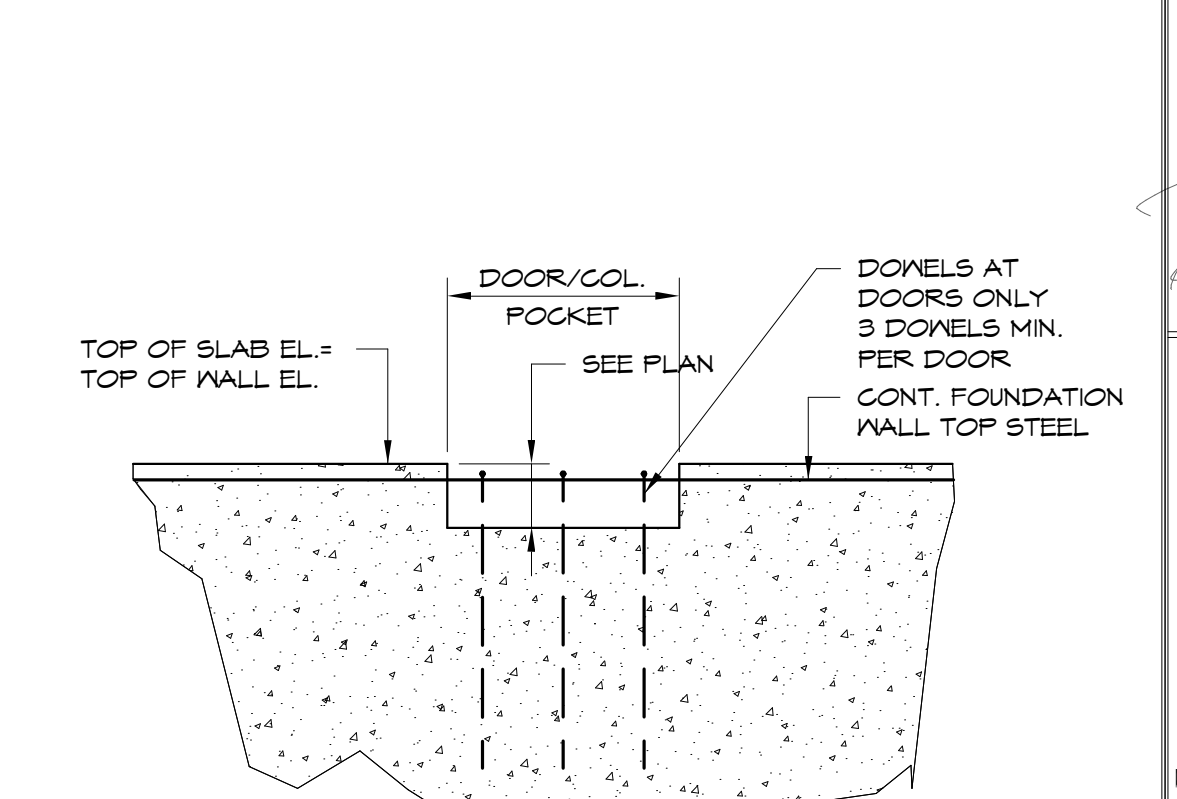
B HORIZONTAL REINFORCING OF CONCRETE WALLS
1/2" = 1'-0"



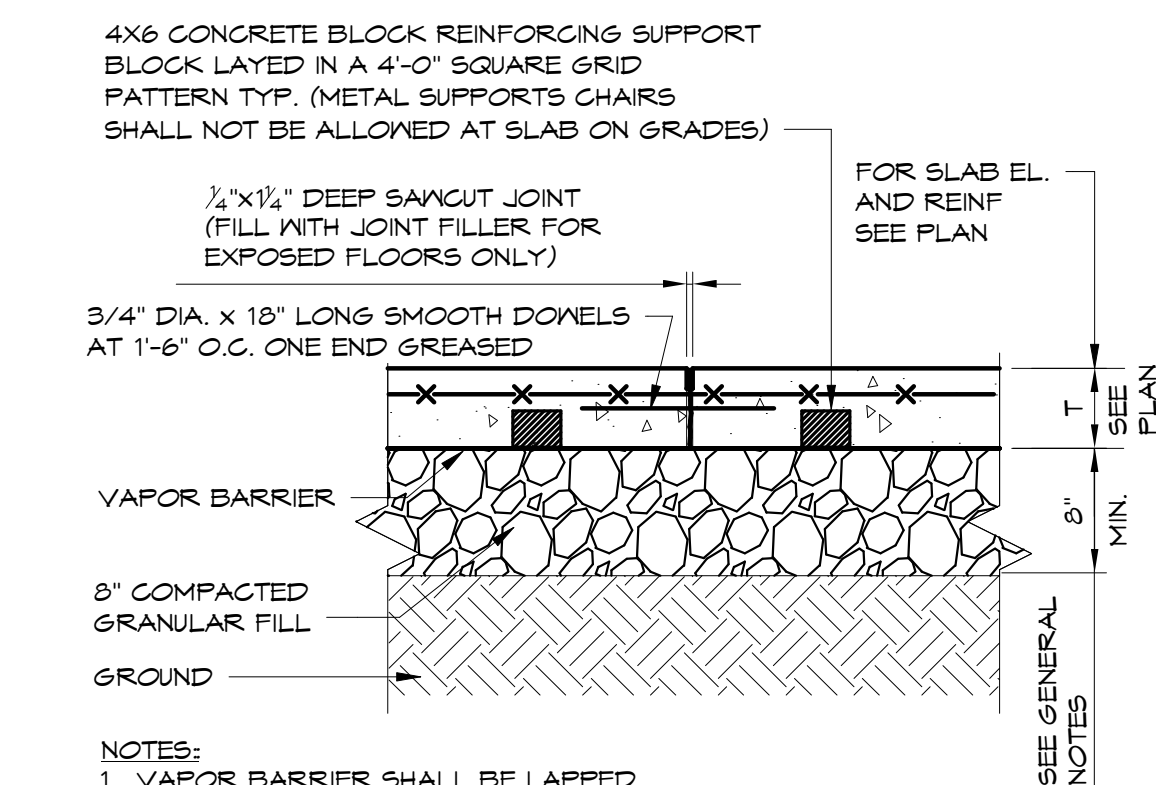
C TYPICAL WALL SECTION AT DOORWAY
3/4" = 1'-0"



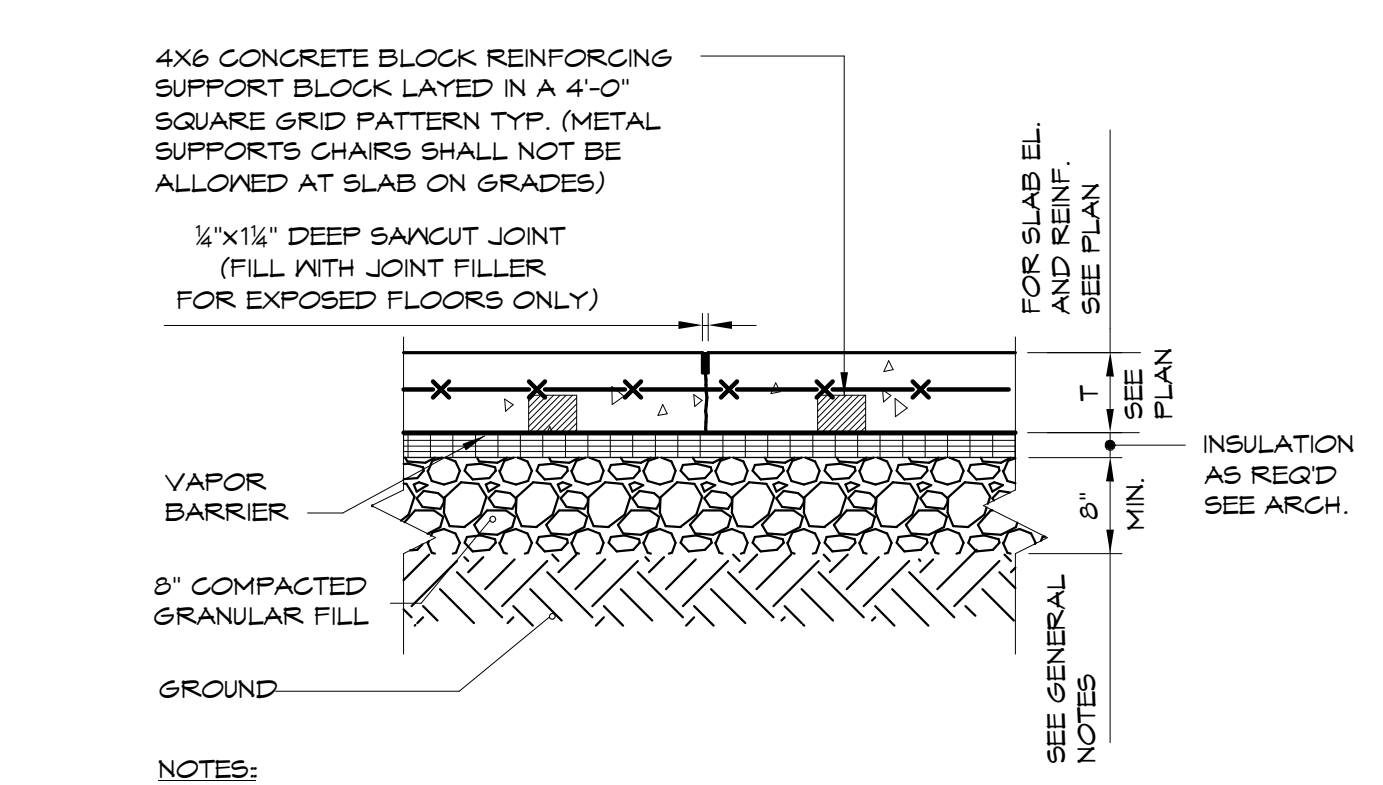
D TYPICAL WALL SECTION AT DOORWAY W/SIDEWALK OR PLATFORM
1" = 1'-0"



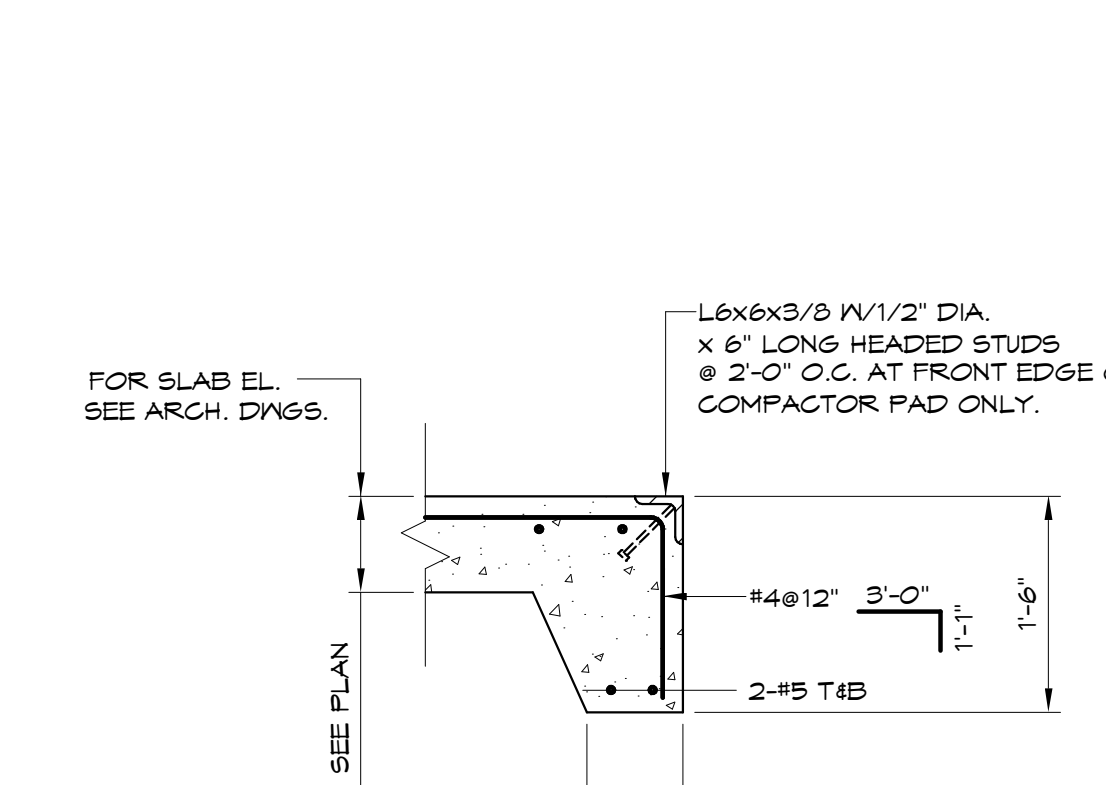
E TYPICAL ELEVATION AT DOORS
1/2" = 1'-0"



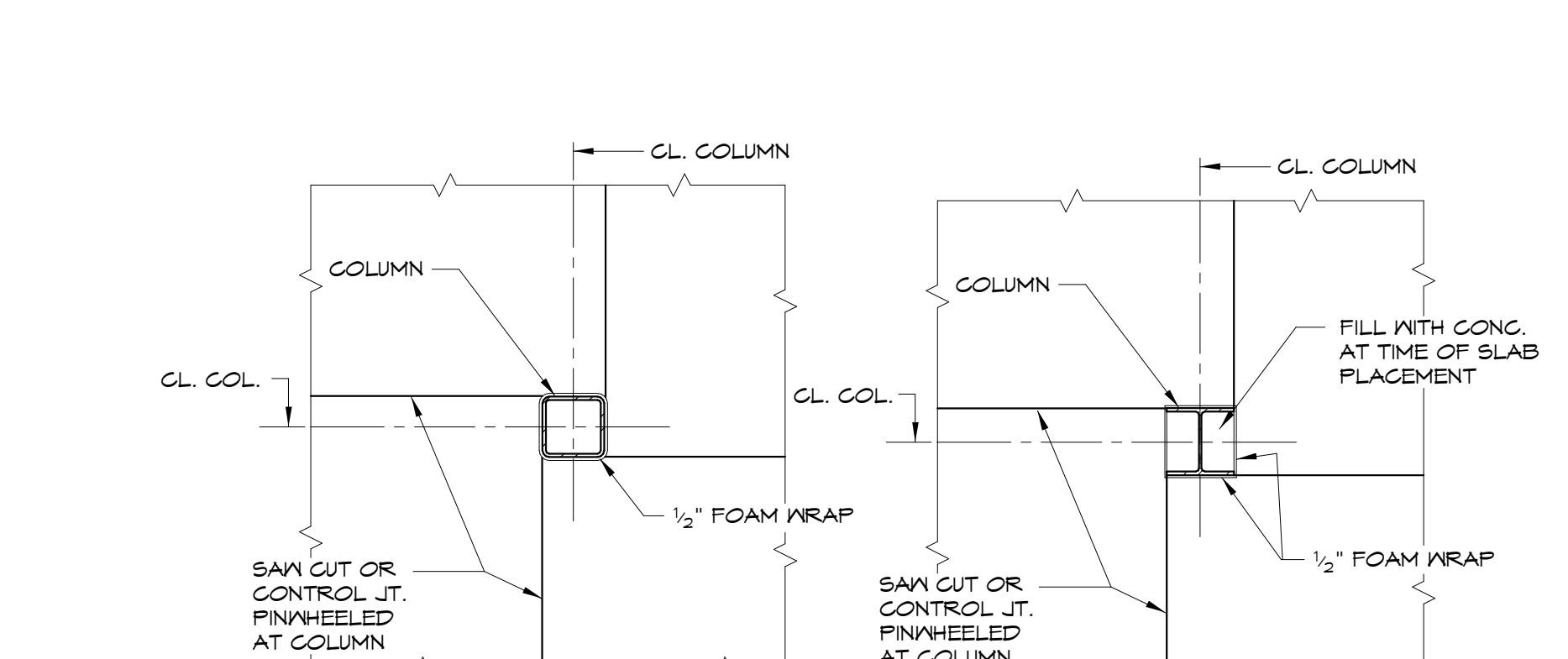
F TYPICAL SLAB ON GRADE CONSTRUCTION JOINT DETAIL
3/4" = 1'-0"



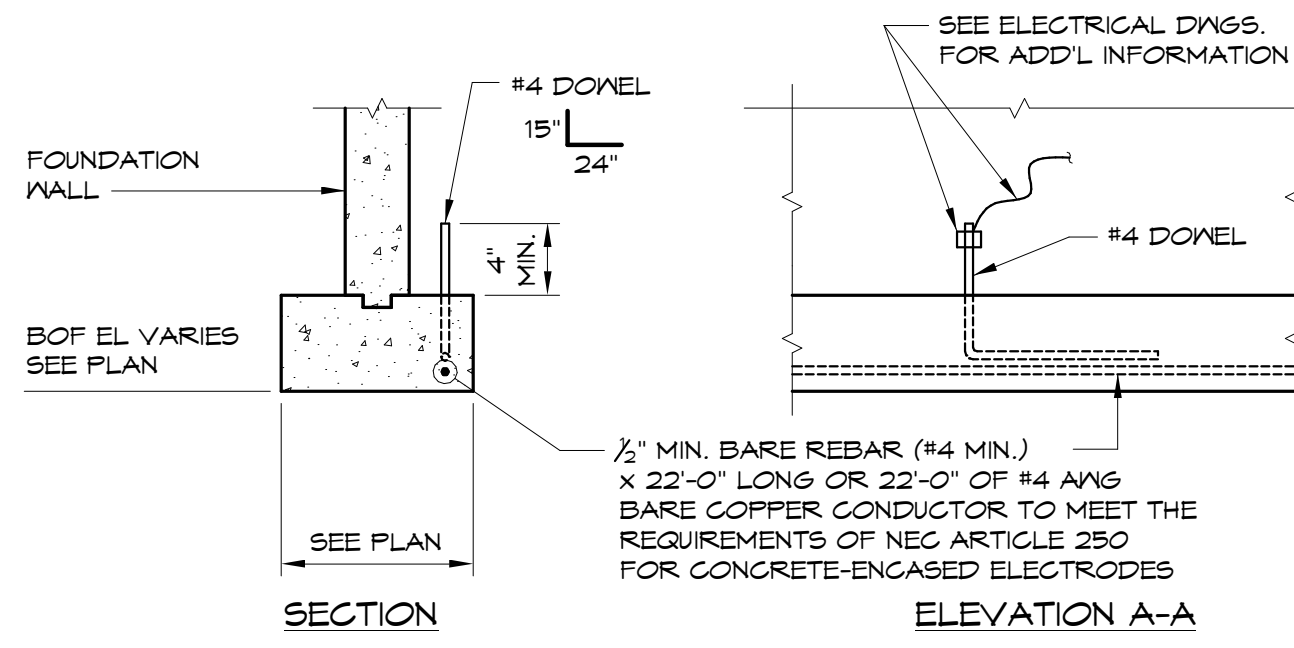
G TYPICAL SAW CUT CONTROL JOINT DETAIL
3/4" = 1'-0"



H TYPICAL EXTERIOR PAD EDGE DETAIL
3/4" = 1'-0"

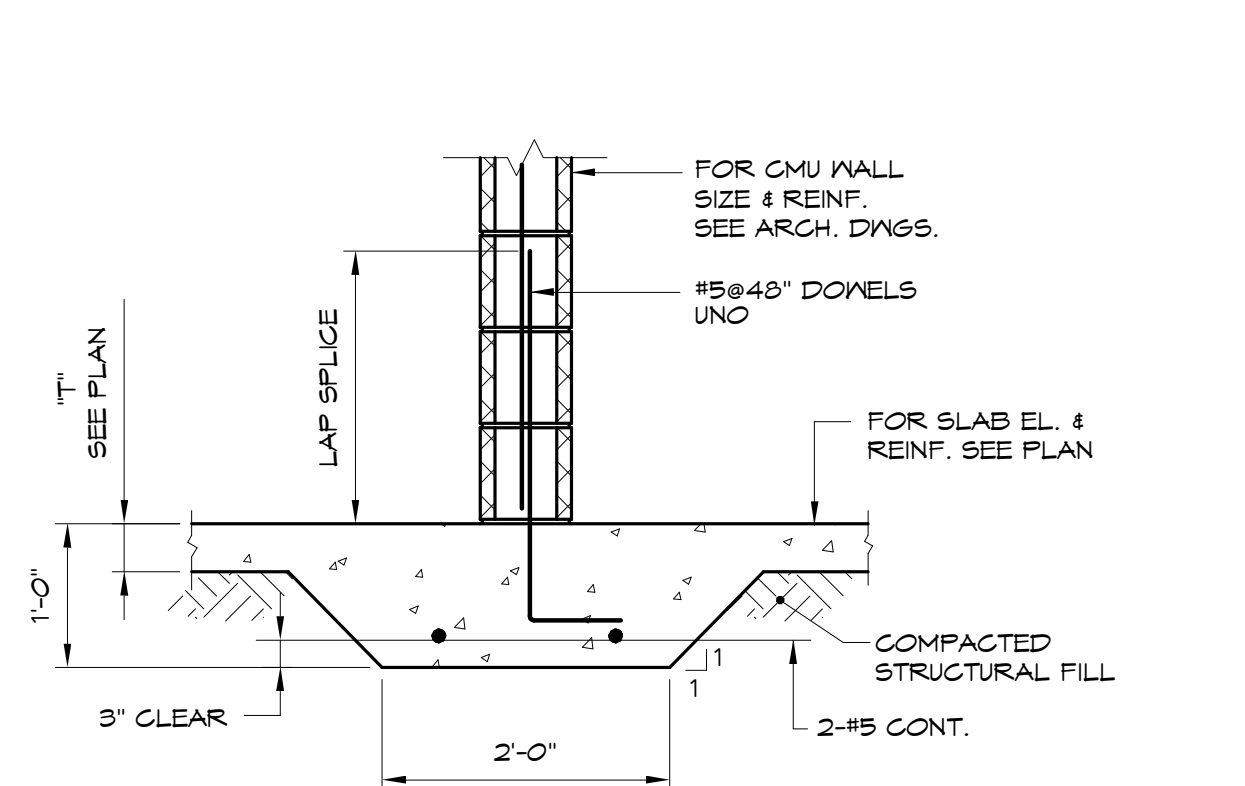


J HSS COLUMN ISOLATION JOINT DETAIL AT COLUMNS
1/2" = 1'-0"

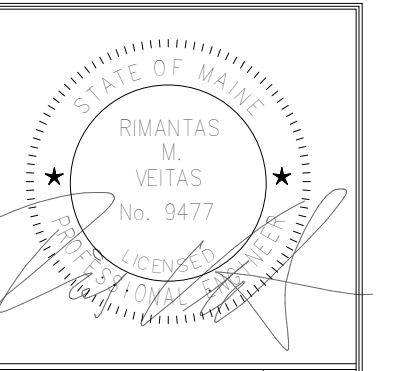


NOTE:
ONE (1) LOCATION MINIMUM REQUIRED PER BUILDING, SEE ELECTRICAL DRAWINGS. COORDINATE WITH GENERAL CONTRACTOR FOR LOCATION OF REBAR CONNECTION AND TO PROVIDE ACCESS TO THE REBAR CONNECTION UNTIL ELECTRICAL INSTALLATION AND INSPECTION ARE COMPLETE.

K CONCRETE ENCASED ELECTRODE
1/2" = 1'-0"



L CONTINUOUS FOOTING FOR NON-BEARING WALLS
3/4" = 1'-0"



Prepared For:
BATEMAN PARTNERS, LLC
P.O. BOX 7486
Portland, ME 04112

Consulting Engineer:
VEITAS ENGINEERS
68 Granite Street, Suite 10
Brunswick, Maine 02914
Tel: (207) 786-2800 Fax: (207) 786-2805

Architect:
ARCHETYPE architects
48 Union Wharf Portland, Maine 04101
(207) 772-6022 Fax (207) 772-4056

Project:
16 MIDDLE STREET
MIDDLE STREET
PORTLAND, MAINE

Revisions:

01/15/16	ISSUED FOR FDN. PERMIT
----------	------------------------

Date: 01/15/16
Scale:
TYPICAL DETAILS

S2.02