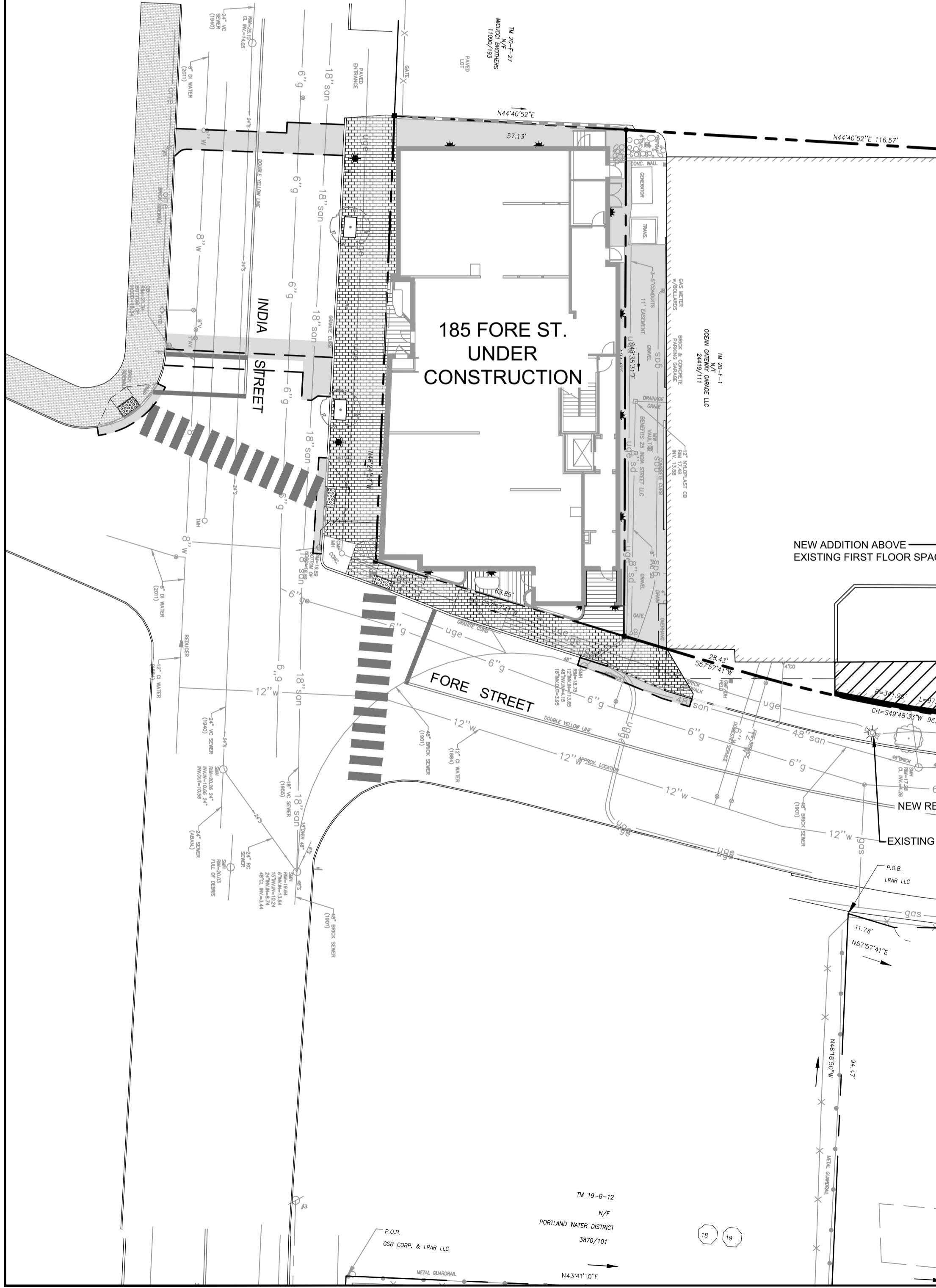
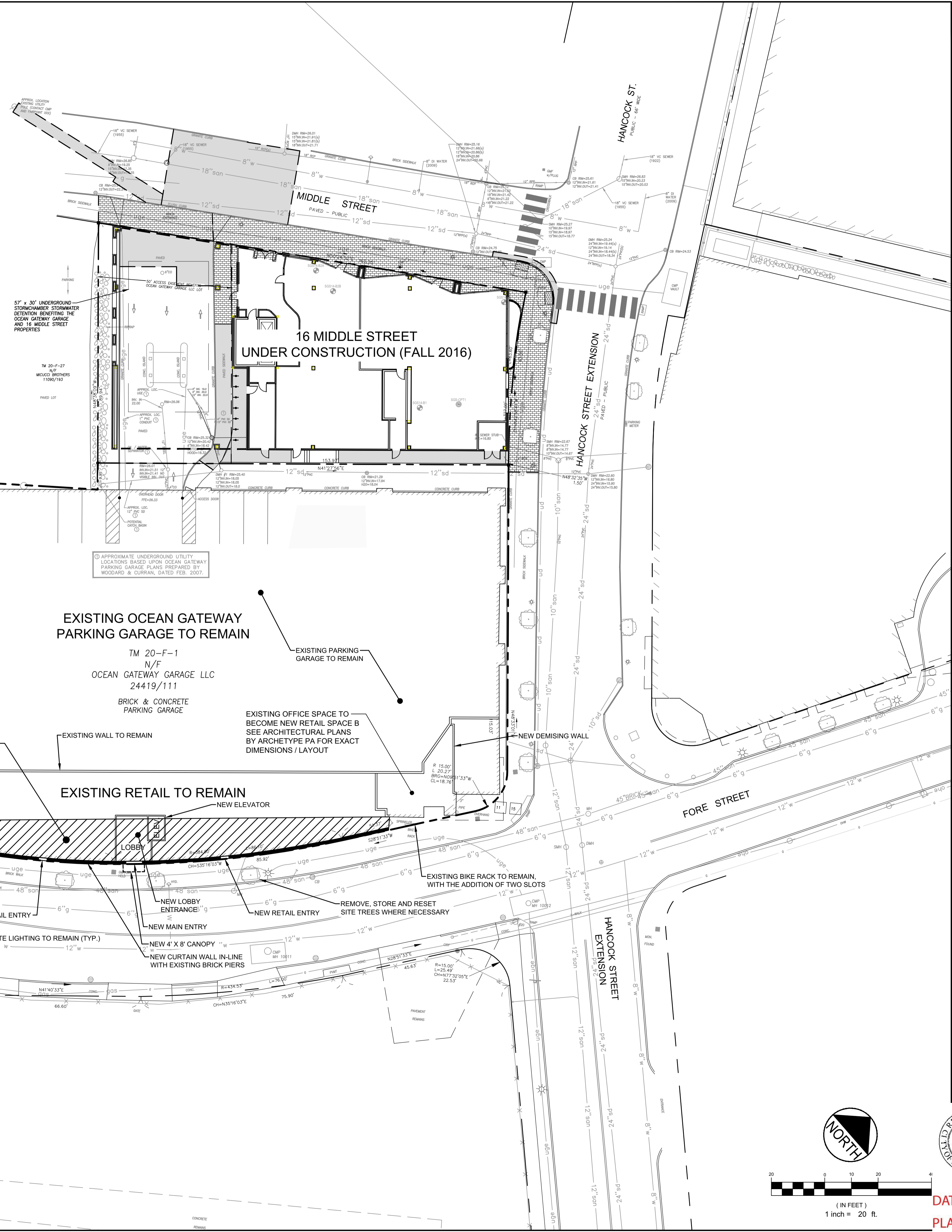
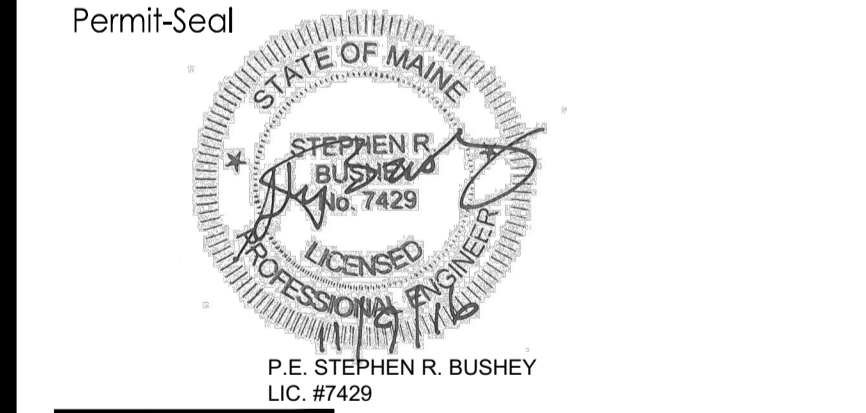


- PLAN REFERENCES:**
- "EXISTING CONDITIONS PLAN", OCEAN GATEWAY PARKING GARAGE, PREPARED FOR RIVERWALK, LLC, 2 MARKET STREET, SUITE 500, PORTLAND, MAINE 04101, PREPARED BY WOODARD & CURRAN OF PORTLAND, MAINE, SHEET C100, LATEST REVISION OF 2/22/07.
 - "UTILITY PLAN", OCEAN GATEWAY PARKING GARAGE, PREPARED FOR RIVERWALK, LLC, 2 MARKET STREET, SUITE 500, PORTLAND, MAINE 04101, PREPARED BY WOODARD & CURRAN OF PORTLAND, MAINE, SHEET C100, LATEST REVISION OF 8/10/07.
 - "SUBDIVISION/RECORDING PLAN ON INDIA STREET AND FORE STREET, PORTLAND, MAINE", MADE FOR RECORD OWNERS RIVERWALK, LLC, 25 INDIA LLC, HANCOCK & MIDDLE LLC, OCEAN GATEWAY GARAGE LLC, 2 MARKET STREET, SUITE 500, PORTLAND, MAINE, PREPARED BY OWEN HASKELL, INC. OF PORTLAND, MAINE, DRAWING NO. 1B, LATEST REVISION OF 04-13-06.
 - "OFF-SITE DRAINAGE PLAN, RESIDENCE INN BY MARIOTT - PORTLAND, MAINE", PREPARED FOR SUMMIT HOTEL PROPERTIES, LLC, PREPARED BY GORRILL-PALMER CONSULTING ENGINEERS, INC. OF GRAY, MAINE, DRAWING NO. C103, LATEST REVISION OF 11/05/07.
 - "PORTLAND SEWER SYSTEM, INFILTRATION-INFLOW ANALYSIS, SYSTEM BASE MAPPING, STUDY AREA IV", PREPARED FOR PORTLAND WATER DISTRICT, PREPARED BY HUNTER-BALLEW ASSOCIATES OF FALMOUTH, MAINE, DRAWING NO. IV-4, LATEST REVISION OF 11-14-03.
 - "EXISTING CONDITIONS PLAN AND DEMOLITION PLAN, HANCOCK STREET CONSTRUCTION, BID #5607", PREPARED FOR CITY OF PORTLAND DEPARTMENT OF PUBLIC WORKS, PORTLAND, MAINE, PREPARED BY WOODARD & CURRAN OF PORTLAND, MAINE, SHEET C100, LATEST REVISION OF 01/12/07.
 - "HANCOCK STREET PLAN & PROFILE, STA. 0+00 TO STA. 3+32, HANCOCK STREET CONSTRUCTION, BID #5607", PREPARED FOR CITY OF PORTLAND DEPARTMENT OF PUBLIC WORKS, PORTLAND, MAINE, PREPARED BY WOODARD & CURRAN OF PORTLAND, MAINE, SHEET C202, LATEST REVISION OF 01/12/07.
 - "PLAN OF LAND STANDARD BOUNDARY SURVEY, ON FORE, INDIA, MIDDLE, NEWBURY, HANCOCK & MOUNTFORT STREETS, PORTLAND, MAINE", FOR SHIPYARD BREWING COMPANY, PREPARED BY OWEN HASKELL, INC. OF PORTLAND, MAINE, DRAWING NO. 1, LATEST REVISION OF 9/1/94.
 - "AMENDED RECORDING PLAT, 185 FORE STREET, FORE STREET, PORTLAND, MAINE", MADE FOR RECORD OWNER EAST INDIA LAND COMPANY LLC, c/o SHIPYARD BREWING COMPANY, 88 NEWBURY STREET, PORTLAND, MAINE, PREPARED BY OWEN HASKELL, INC. OF FALMOUTH, MAINE, DRAWING NO. C-2.1, LATEST REVISION OF 10/27/15.
 - "AMENDED RECORDING PLAT, 16 MIDDLE STREET, MIDDLE STREET, PORTLAND, MAINE", MADE FOR RECORD OWNER EIGHT MIDDLE LAND COMPANY LLC, c/o SHIPYARD BREWING COMPANY, 86 NEWBURY STREET, PORTLAND, MAINE, PREPARED BY OWEN HASKELL, INC. OF FALMOUTH, MAINE, DRAWING NO. C-2.1, LATEST REVISION OF 2/18/16.
 - "ALTA/ACSM LAND TITLE SURVEY, INDIA STREET, FORE STREET & HANCOCK STREET EXTENSION, PORTLAND, CUMBERLAND COUNTY, MAINE", MADE FOR PORTLAND NORWICH GROUP, LLC, OWNER OF RECORD: OCEAN GATEWAY GARAGE, LLC, PREPARED BY OWEN HASKELL, INC. OF FALMOUTH, MAINE, LATEST REVISION OF NOVEMBER 30, 2015.



Revision	By	Date
2	ASB	2016.10.09
1	SRB	2016.07.13
	CDD	2016.07.13
	Asst.	2016.07.13
	YI/AMOD	

File Name	CDD	SRB	SRB	2016.07.13
	DWN.	CHKD.	DSGN.	DATE
SP-M150-BA5E				



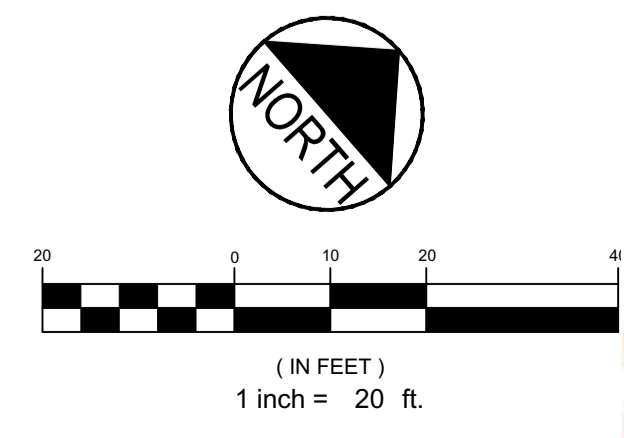
Client/Project
PREPARED FOR
ARCHETYPE PA
ADDITION TO OCEAN GATEWAY GARAGE
167 FORE STREET, PORTLAND, MAINE

**CITY OF PORTLAND
APPROVED SITE PLAN**
Subject to Conditions of Approval
and Standard Conditions

DATE of APPROVAL September 26, 2016

PLANNER Caitlin Cameron

PROJECT NO. 2016-131



V:\1585\active\158560140\Civil\Construction_SitePlan\SP-M150-BA5E.dwg delaware 11/9/2016 8:15 AM