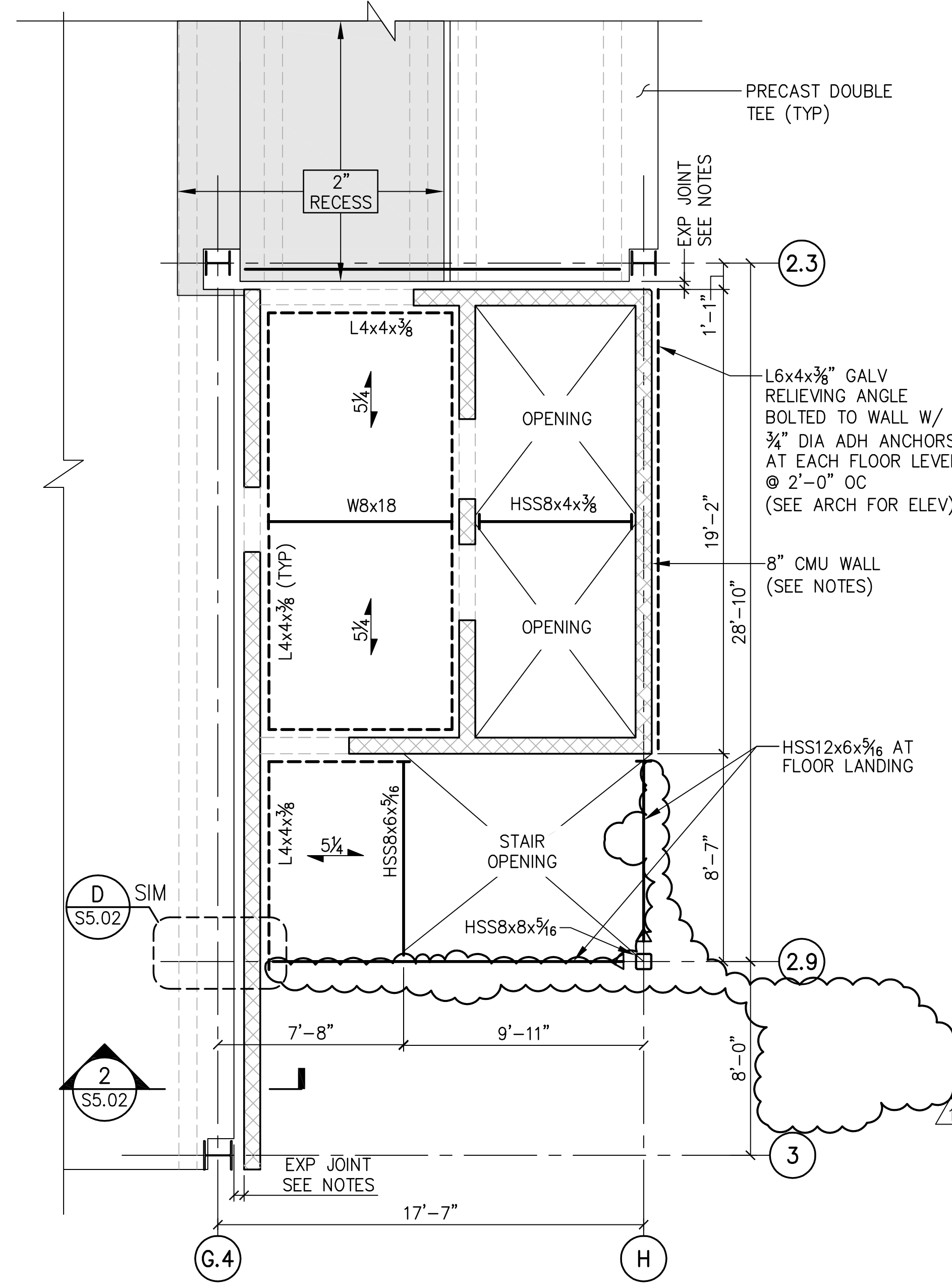
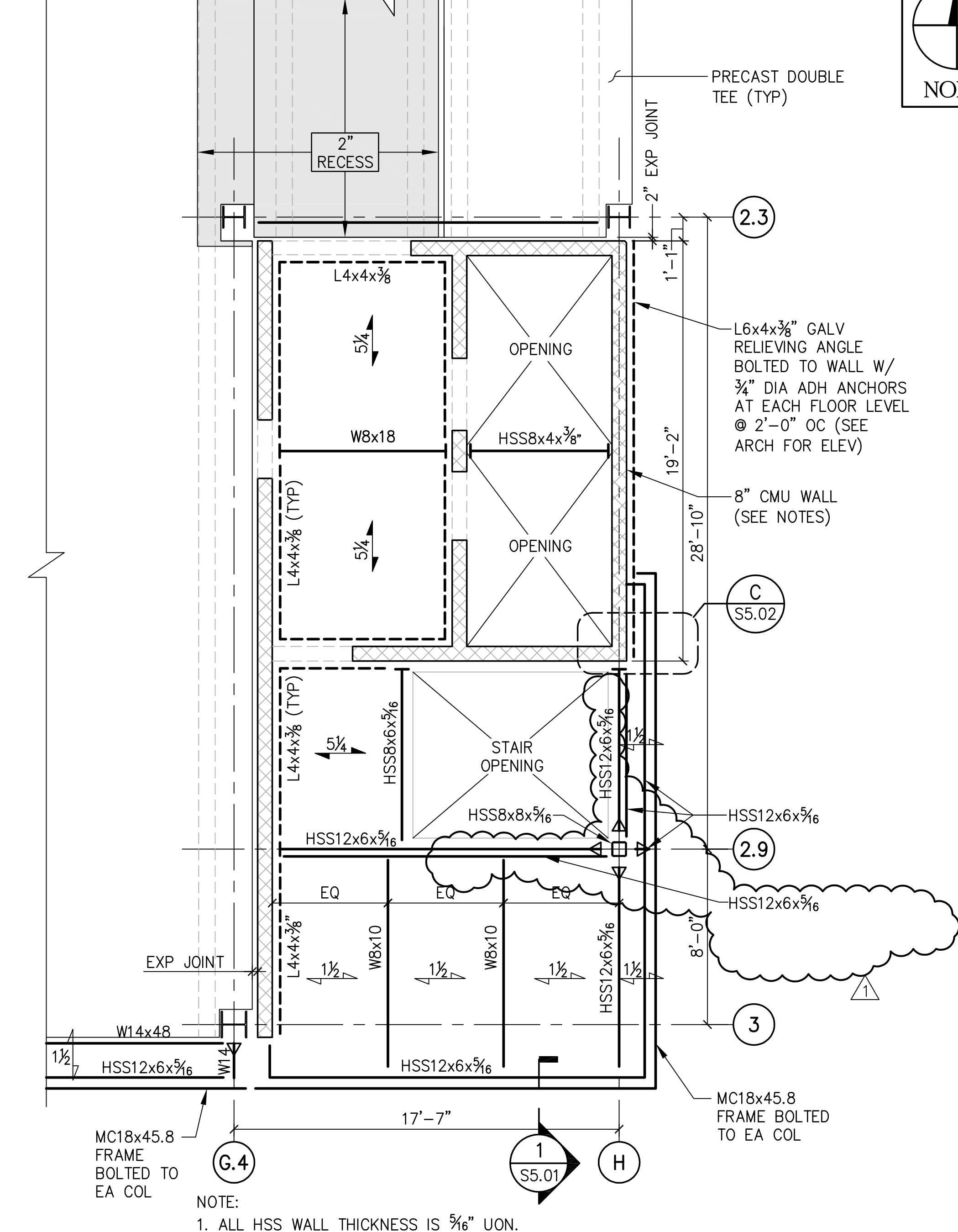


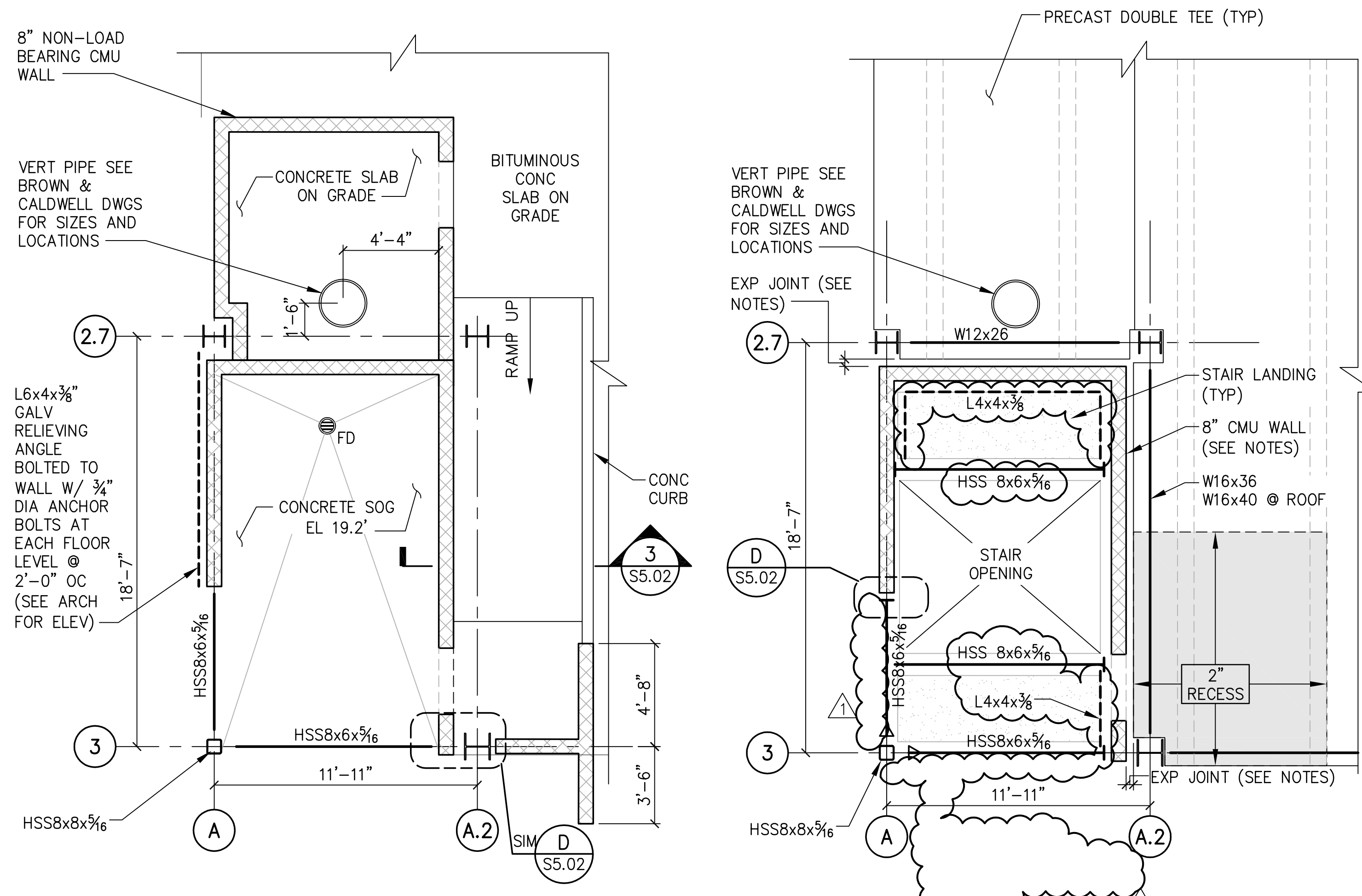
GROUND FLOOR EAST STAIR & ELEVATOR DETAIL (A)  
1/4"=1'-0"



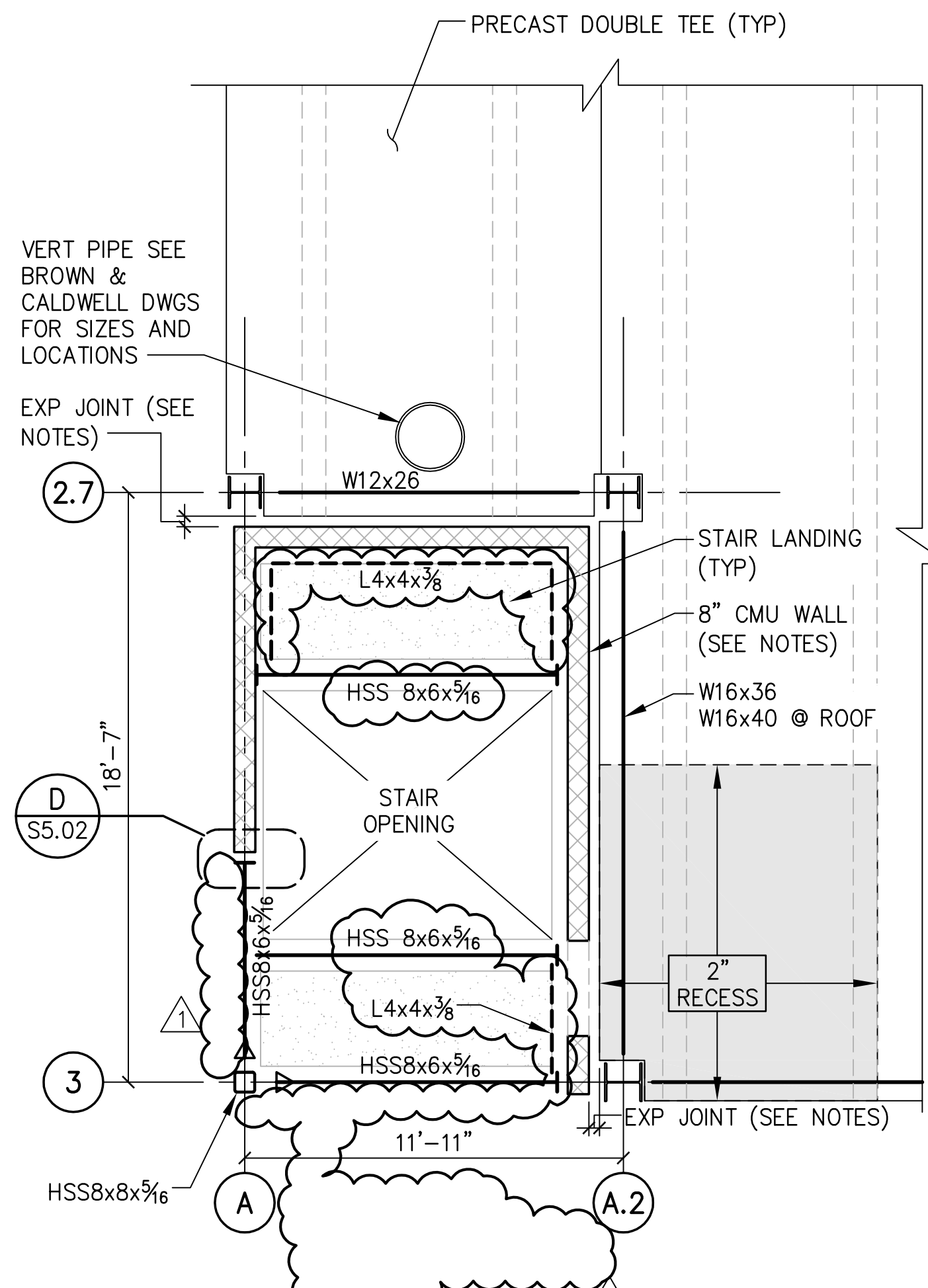
TYPICAL FLOOR EAST STAIR & ELEVATOR DETAIL (B)  
1/4"=1'-0"



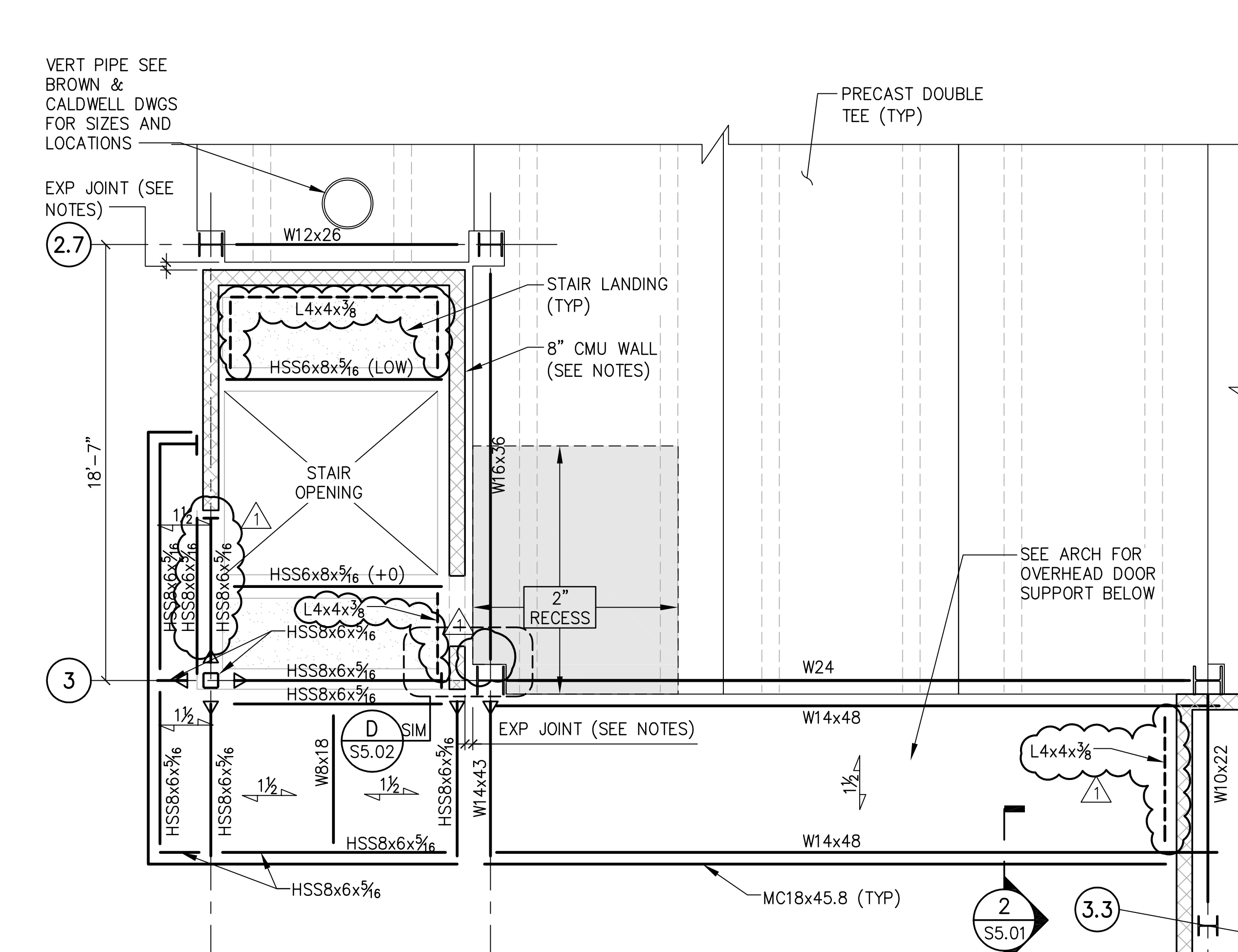
SECOND FLOOR EAST STAIR & ELEVATOR DETAIL (C)  
1/4"=1'-0"



GROUND FLOOR WEST STAIR DETAIL (E)  
1/4"=1'-0"



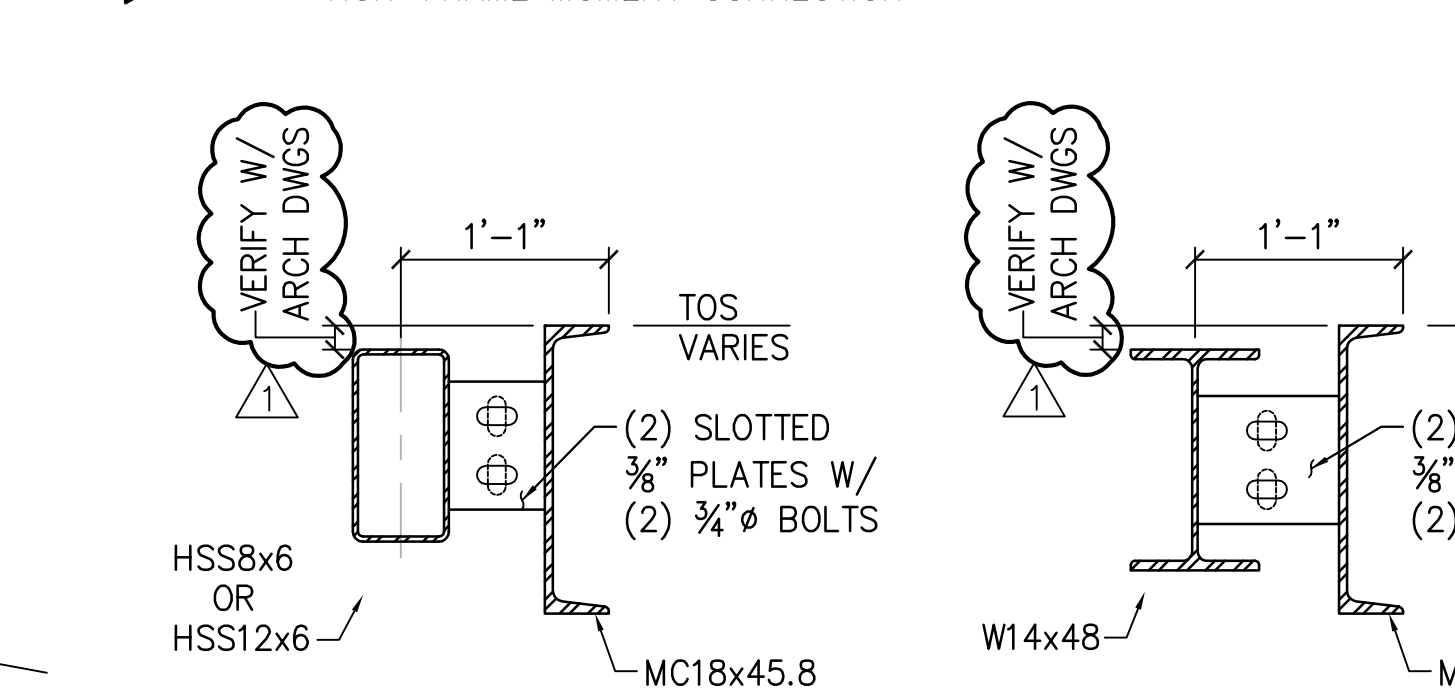
TYPICAL WEST STAIR DETAIL (F)  
1/4"=1'-0"



FIRST FLOOR WEST STAIR DETAIL (G)  
1/4"=1'-0"

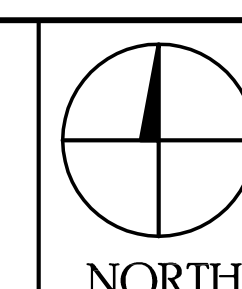
- NOTES:
1. SEE MASONRY GENERAL NOTES ON SHEET S0.01.
  2. ALL CMU TO HAVE MINIMUM COMPRESSIVE STRENGTH OF  $f_m=3,000$  PSI.
  3. AT STAIR AND ELEVATOR TOWERS, PROVIDE 8" CMU FULLY GROUTED WITH #6 VERT REIN IN EACH CELL (AT 8" OC). LEVELS 3 & 4, @ 16" OC. LEVELS 5 & ROOF, @ 32" OC. END BLOCK CORES SHALL BE REINFORCED FULL HEIGHT.
  4. COORD EMBEDS FOR ALL STEEL BEAMS, ELEVATOR DIVIDER BEAMS, ELEVATOR GUIDE RAILS, ETC.
  5. SEE S1.07 FOR STAIR AND ELEVATOR ROOF PLANS.
  6. COORD W/ EXPANSION JOINTS PROVIDE THE FOLLOWING JOINT SIZES, MINIMUM: LEVELS 1, 2,..... 2" LEVELS 3, 4,..... 4" LEVELS 5, ROOF,..... 6"
  7. PROVIDE LINTELS AS REQUIRED. SEE S7.01 FOR SIZES & DETAILS

- LEGEND:
- FD FLOOR DRAIN
  - CMU BLOCK
  - 5/8" 5/8" COMPOSITE DECK W/ 3/4" NORMAL WT CONC ON 2" STL DECK W/ 4.0x4.0 WWF (TOP)
  - 1/2" 1/2", 18 GA, GALV METAL ROOF DECK
  - NON-FRAME MOMENT CONNECTION



SECTION 1  
1"=1'-0" S5.01

SECTION 2  
1"=1'-0" S5.01



NO.	DATE	DESCRIPTION
8.10.07	BULLETIN 1	

