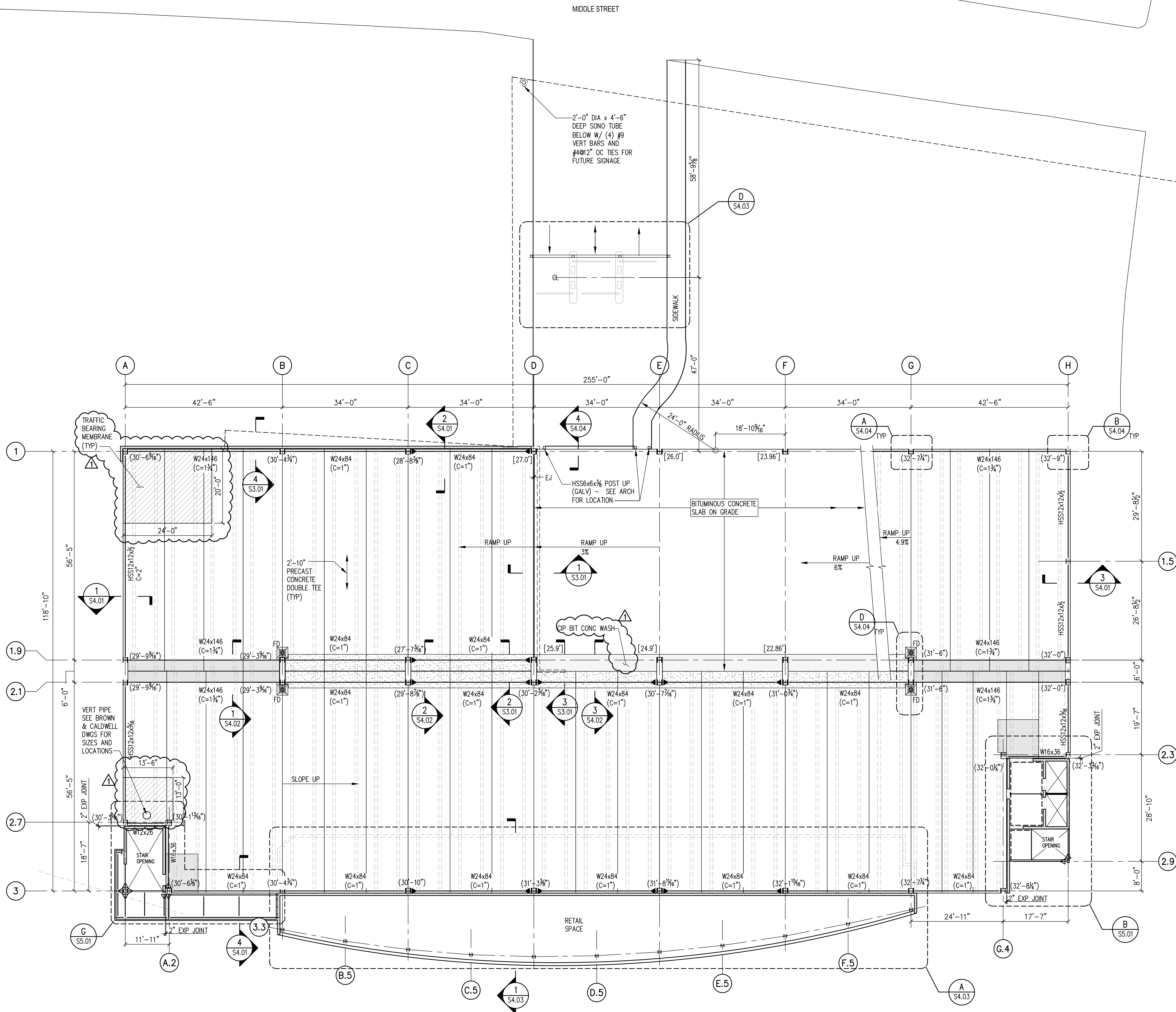


REVISIONS	NO.	DATE	DESCRIPTION
	1	8.10.07	BULLETIN 1



FIRST FLOOR PLAN
 3/32'-1'-0"

- NOTES:**
- FOR GENERAL INFORMATION, SEE SHEET S0.01
 - TOP OF STEEL IS (-1'-3 1/2") BELOW TOP OF DECK (TYP UON).
 - FOR HSS BUMPER TUBES LOCATE TOP OF STEEL 2'-0" ABOVE TOP OF DECK AT COLUMN.
 - FOR COLUMN SCHEDULE AND DETAILS, SEE SHEET S2.01.
 - FOR TYPICAL DETAILS, SEE SHEET S7.01.
 - NO FACADE SUPPORTS SHOWN. SEE SECTIONS FOR DETAILS.
 - PRECAST DOUBLE TEES ARE 2'-10" DEEP (MAX) WITH 15" NBS, UON.
 - FOR PRECAST DOUBLE TEE SECTIONS AND DETAILS, SEE SHEET S8.04.
 - PROVIDE TRAFFIC BEARING MEMBRANE ON DECK ABOVE MECH. & ELECT ROOMS, ALL LEVELS AS REQUIRED.
- LEGEND:**
- [X.XX] TOP OF CONCRETE SLAB-ON-GRADE
 - (X'-X") TOP OF DECK
 - C=X" BEAM CAMBER
 - FD FLOOR DRAIN
 - [Pattern] 4'-6"x3" P/C WASH
 - [Pattern] CMU BLOCK
 - [Pattern] CIP TOPPING, UON
 - [Pattern] CIP BIT CONC WASH
 - [Symbol] FRAME MOMENT CONNECTION
 - [Symbol] NON-FRAME MOMENT CONNECTION