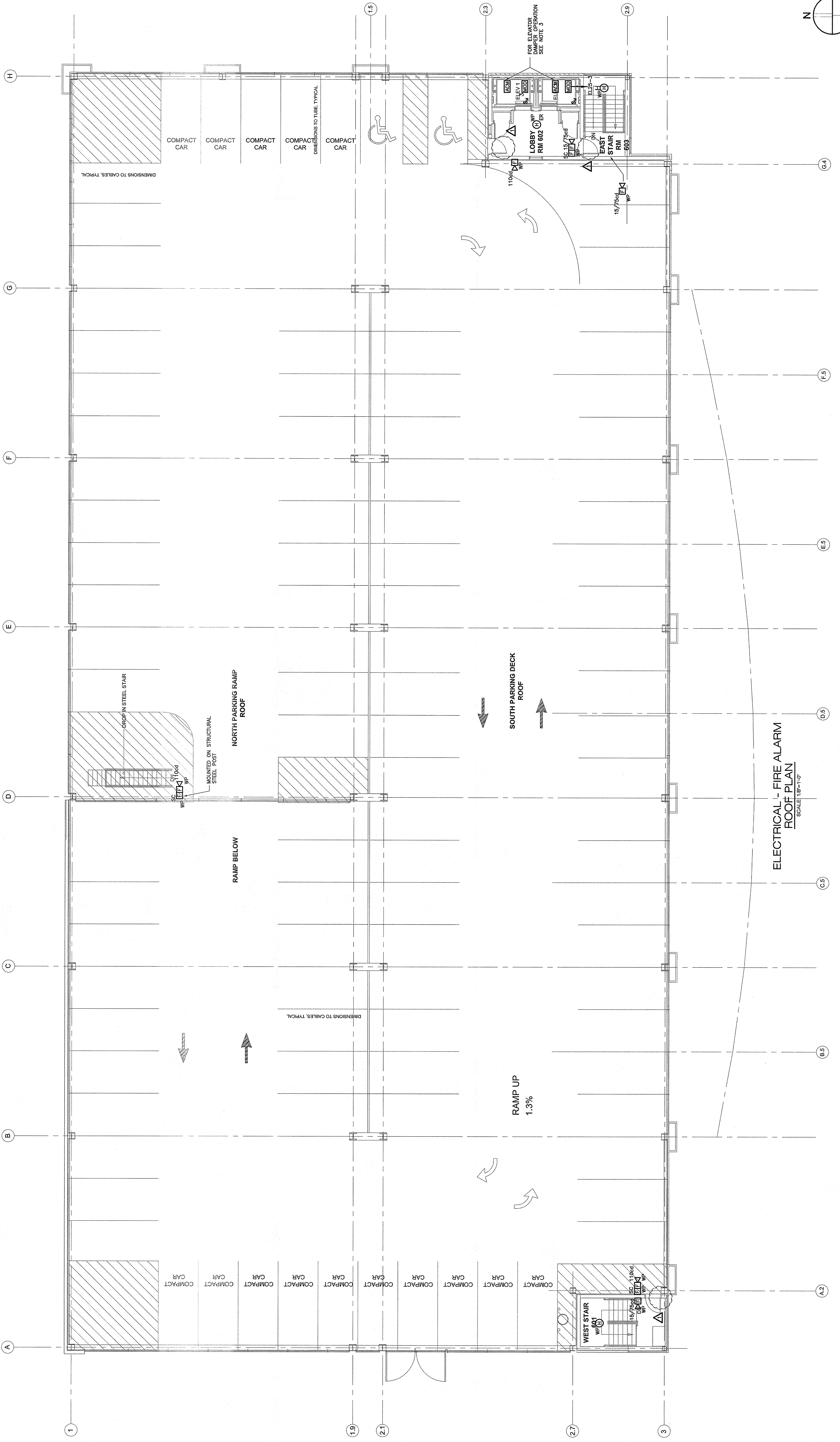


- FIRE ALARM NOTES:**
1. REFER TO DRAWING E4.06 FOR LEGEND, SYMBOLS AND GENERAL NOTES.
 2. REFER TO ARCHITECTURAL DRAWINGS FOR ASSOCIATED NOTES, MOUNTING DETAILS, HEIGHTS AND EXACT LOCATIONS OF ALL DEVICES.
 3. ACM SHALL DE-ENERGIZE DAMPER UPON FIRE ALARM SYSTEM ALARM. CONFIRM LOCATION OF DAMPER WITH HVAC CONTRACTOR.
 4. FIRE ALARM BRANCH CIRCUITRY SHALL BE INSTALLED IN CONDUIT (R/S).



ELECTRICAL - FIRE ALARM
ROOF PLAN
SCALE 1/8"=1'-0"

SIMON DESIGN ENGINEERING LLC
42 Washington Street, Suite 300
Wellesley, MA 02481
info@sde-us.com
781.237.2226 tel
781.237.2226 fax
www.sde-us.com

RDK ENGINEERS
Boston, MA
Richard D. Kimball Company, Inc.
200 Brinkbone Square
Andover, MA 01810-1488
P 978-475-0298
F 978-475-5798
W www.rdkengineers.com

CONSTRUCTION SET

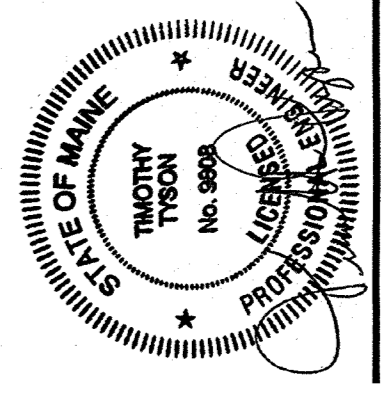
OWNER
RIVERWALK, LLC
2 MARKET STREET,
SUITE 500
PORTLAND, ME 04101
CLIENT

RIVERWALK, LLC
2 MARKET STREET,
SUITE 500
PORTLAND, ME 04101

PROJECT
OCEAN GATEWAY PARKING GARAGE
MIDDLE STREET
PORTLAND, MAINE

REVISIONS
NO. DATE DESCRIPTION
1 08/10/07 BULLETIN 1

DATE FEB 22, 2007
SCALE
PROJECT NO. 05-032



DRAWING TITLE
ELECTRICAL ROOF FIRE ALARM PLAN
SHEET NUMBER

E4.06