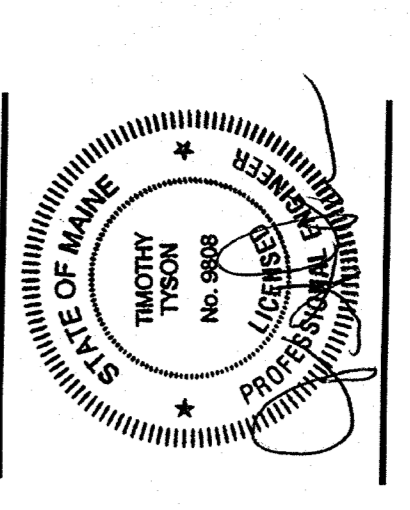


**CONSTRUCTION SET**

**OWNER**  
**RIVERWALK, LLC**  
 2 MARKET STREET,  
 SUITE 500  
 PORTLAND, ME 04101  
**CLIENT**  
**RIVERWALK, LLC**  
 2 MARKET STREET,  
 SUITE 500  
 PORTLAND, ME 04101  
**PROJECT**  
**OCEAN GATEWAY PARKING GARAGE**

MIDDLE STREET  
 PORTLAND, MAINE  
**REVISIONS**  
 NO. DATE DESCRIPTION  
**08/10/07 BULLETIN J**

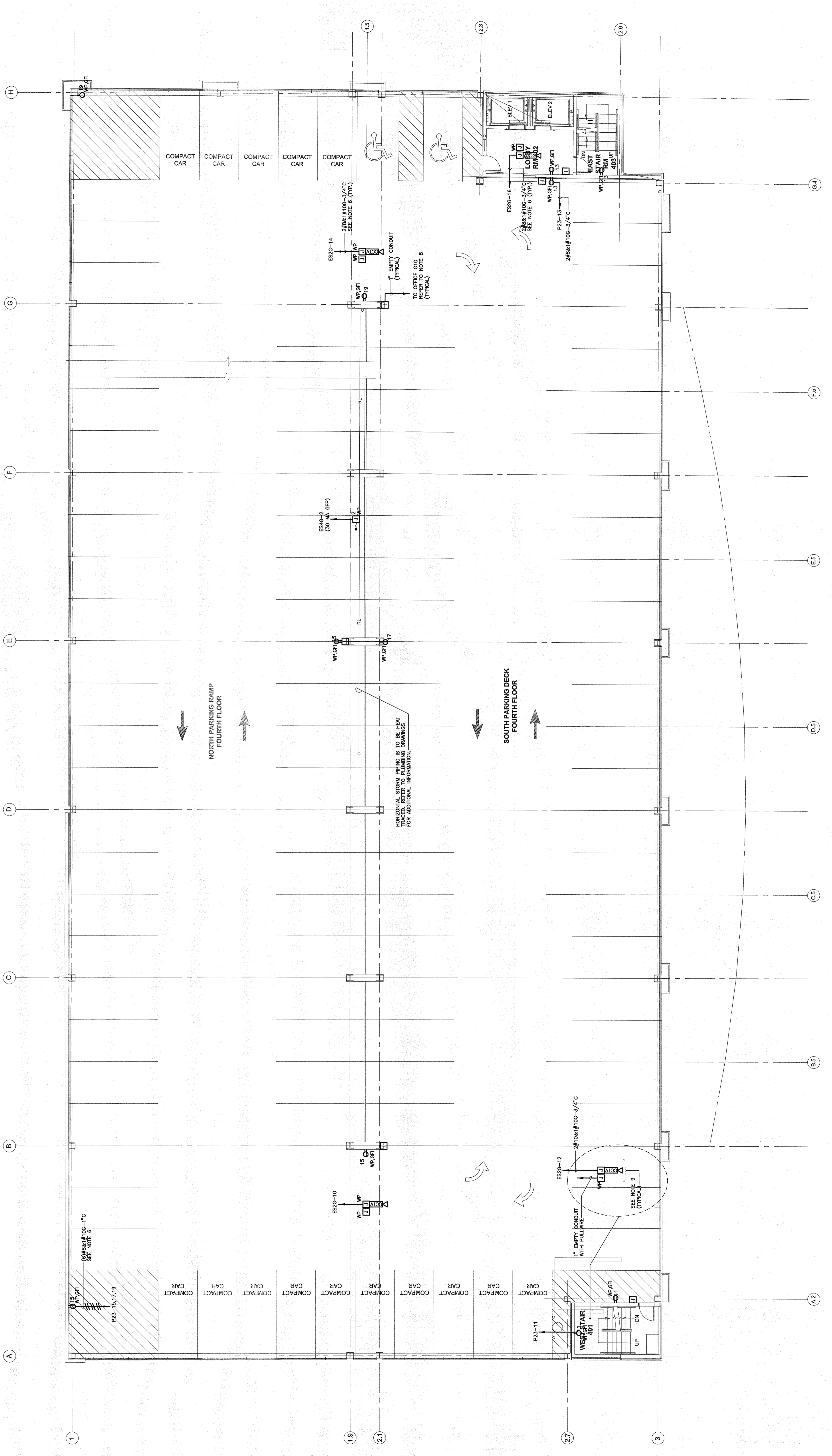
DATE FEB 22, 2007  
 SCALE PROJECT NO. 05-032



DRAWING TITLE  
**ELECTRICAL FOURTH FLOOR POWER PLAN**

SHEET NUMBER  
**E3.04**

- POWER NOTES:**
- REFER TO DRAWING E3.00 FOR LEGEND, SYMBOLS AND GENERAL NOTES.
  - REFER TO ARCHITECTURAL DRAWINGS FOR ASSOCIATED NOTES, MOUNTING DETAILS, HEIGHTS AND EXACT LOCATIONS OF ALL DEVICES.
  - ALL ELECTRICAL DEVICES SHALL BE INSTALLED IN ACCORDANCE WITH THE FIELD AND RELATED ELECTRICAL PROGRAMMING DOCUMENTS. THE CONTRACTOR SHALL BE RESPONSIBLE FOR VERIFYING THE ASSOCIATED CIRCUIT NUMBERS THAT ARE APPLIED TO EACH DEVICE AND THAT THE DEVICES ARE INSTALLED IN ACCORDANCE WITH THE NOTES AND NOTED OTHERWISE.
  - VOLTAGE DROP HAS BEEN CONSIDERED IN THE DESIGN OF ALL BRANCH CIRCUITRY. SHORTEST CONDUCTOR/RACEWAY ROUTING. THE ELECTRICAL CONTRACTOR SHALL BE RESPONSIBLE FOR DEVIATIONS TAKEN THAT WILL INCREASE CONDUCTOR/RACEWAY LENGTH. THE LAST OUTLET SHALL BE INCREASED A MINIMUM OF ONE SIZE ABOVE THAT SPECIFIED IN THE SCHEDULE. FEEDERS SHALL FOLLOW SIMILAR GUIDELINES AND BE LIMITED TO 2% DROP.
  - POWER BRANCH CIRCUITRY SHALL BE INSTALLED IN CONDUIT (RCS).
6. PROVIDE COMPRESSION TERMINATIONS TO ENABLE TERMINATION OF OVERSIZED CONDUIT SIZE TO 2" MINIMUM.  
 7. PROVIDE 1" EMPTY CONDUIT WITH PULLWIRE AS INDICATED. ALL PIPE AND INSULATION SHALL BE INSTALLED IN ACCORDANCE WITH THE FIELD BETWEEN TRAYS AND HEAT TRACE SYSTEM MANUFACTURER'S PRIOR TO HEAT TRACING. ALL HEAT TRACE BRANCH CIRCUITS SHALL BE IN HEAT TRACE CONTROL PANEL.  
 8. PROVIDE WORKBOX AND 1" EMPTY CONDUIT WITH PULLWIRE FOR INTERCOM STATION AND PROVIDE ACCESSIBLE CEILING IN OFFICE C10 AND LABELED FOR FUTURE USE.  
 9. ADD ALTERNATE CONDUIT SYSTEM FOR OFFICE C10 AND LABELED FOR FUTURE USE. PROVIDE ACCESSIBLE CEILING IN OFFICE C10 AND LABELED FOR FUTURE USE. REFER TO E3.00 FOR LOCATION OF OFFICE C10. PROVIDE CONDUIT BUSINES AT BOTH ENDS.  
 10. PROVIDE ACCESSIBLE CEILING IN OFFICE C10 AND LABELED FOR FUTURE USE.



**ELECTRICAL - POWER**  
**FOURTH FLOOR PLAN**  
 SCALE: 1/8"=1'-0"