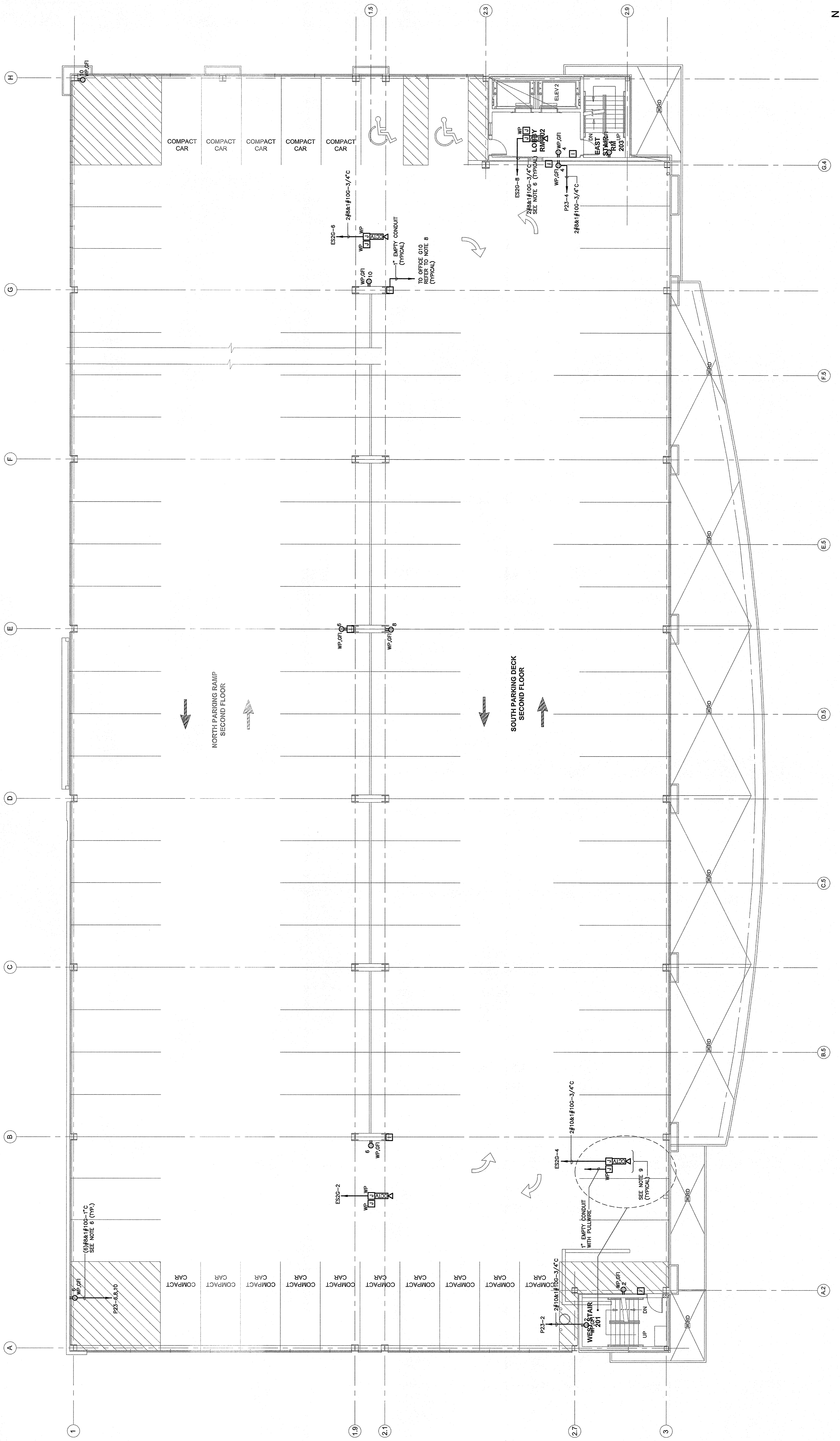


- POWER NOTES:**
1. REFER TO DRAWING E3.01 FOR LEGEND, SYMBOLS AND GENERAL NOTES.
 2. REFER TO ARCHITECTURAL DRAWINGS FOR ASSOCIATED NOTES, MOUNTING DETAILS, HEIGHTS AND EXACT LOCATIONS OF ALL DEVICES.
 3. CIRCUIT NUMBERS ARE DIAGRAMMATIC. EXACT NUMBERS SHALL BE DETERMINED IN THE FIELD AND REFLECTED ON AS-BUILT DOCUMENTATION BY THE ELECTRICAL CONTRACTOR. ALL CIRCUIT NUMBERS SHALL BE IDENTIFIED BY THE ELECTRICAL CONTRACTOR AND THE ELECTRICAL CONTRACTOR SHALL BE RESPONSIBLE FOR INTERCONNECTING BRANCH CIRCUITRY AND FEEDER SIZES SHALL BE SIZED EQUAL TO THE HIGHER UNLESS NOTED OTHERWISE.
 4. VOLTAGE DROP HAS BEEN CONSIDERED IN THE DESIGN OF ALL BRANCH CIRCUITRY AND FEEDER SIZES BASED UPON THE ILLUSTRATED EQUIPMENT LAYOUTS AND THE ASSUMPTIONS THAT THE ELECTRICAL CONTRACTOR SHALL BE RESPONSIBLE FOR IDENTIFYING THE EXACT LOCATION OF ALL DEVICES. BRANCH CIRCUITS LONGER THAN 75' FOR 120V FROM PANEL TO EQUIPMENT SHALL BE SIZED TO LIMIT VOLTAGE DROP TO LESS THAN 3%. FEEDERS SHALL FOLLOW SIMILAR GUIDELINES AND BE LIMITED TO 2% DROP.
 5. POWER BRANCH CIRCUITRY SHALL BE INSTALLED IN CONDUIT (RGS).
6. PROVIDE COMPRESSION TERMINATIONS TO ENABLE TERMINATION OF OVERSIZED CONDUCTORS DUE TO VOLTAGE DROP.
 7. PROVIDE HEAT TRACE (HW/TF) FOR PLUMBING PIPING AS INDICATED. ALL PIPE AND REMOVAL TRACES AND EXACT ROUTING/LENGTHS SHALL BE COORDINATED IN THE FIELD AND REFLECTED ON AS-BUILT DOCUMENTATION BY THE ELECTRICAL CONTRACTOR. REFER TO TYPICAL FREEZE PROTECTION HEAT TRACE INSTALLATION CONTROL PANEL.
 8. PROVIDE WORKBOX AND 1" EMPTY CONDUIT WITH BULLWAVE FOR INTERCOM STATION AND CCTV CAMERAS AS INDICATED. CONDUIT SHALL BE STUBBED OUT ABOVE AND PROVIDE CONDUIT BUSHINGS AT BOTH ENDS.
 9. ADD ALTERNATE CCTV SYSTEM AND PROVIDE EMPTY CONDUIT/WORKBOXES FOR CONTROL AND POWER CONNECTION AS INDICATED. PROVIDE EMPTY CONDUIT/WORKBOXES FOR INTERCOM STATION AND ACCESSIBLE CEILING IN OFFICE 601 AND LABELLED FOR FUTURE USE. REFER TO DRAWING E3.01 FOR LOCATION OF OFFICE 601. PROVIDE CONDUIT BUSHINGS AT BOTH ENDS.



ELECTRICAL - POWER
SECOND FLOOR PLAN
SCALE: 1/8"=1'-0"