

CONSTRUCTION SET

OWNER
RIVERWALK, LLC

2 MARKET STREET,
SUITE 500
PORTLAND, ME 04101

CLIENT
RIVERWALK, LLC

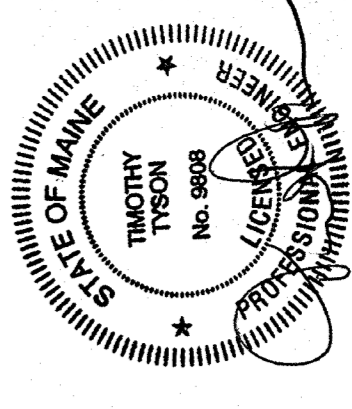
2 MARKET STREET,
SUITE 500
PORTLAND, ME 04101

PROJECT
OCEAN GATEWAY PARKING GARAGE

MIDDLE STREET
PORTLAND, MAINE

REVISIONS
NO. DATE DESCRIPTION
Δ 08/10/07 BULLETIN J

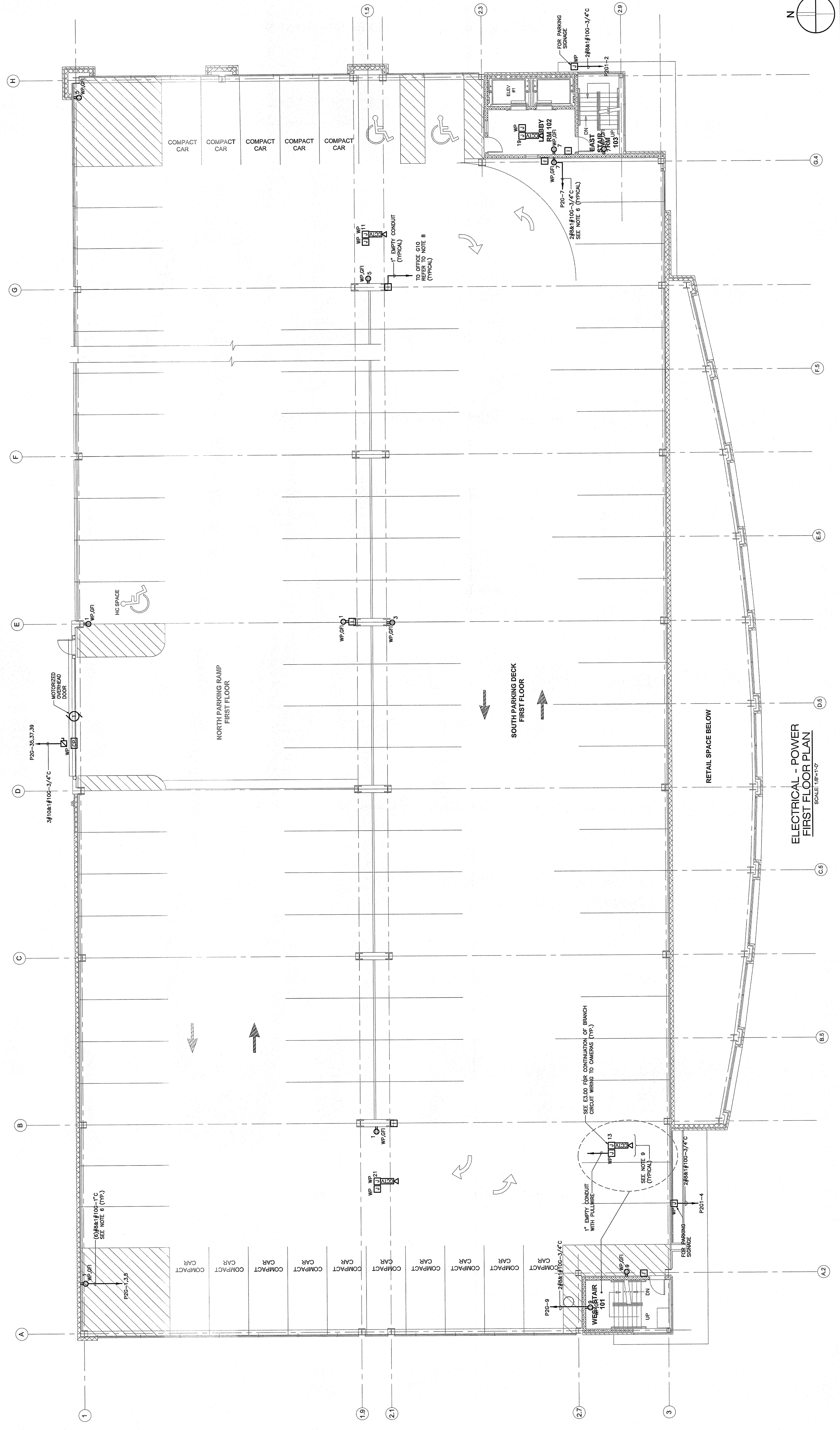
DATE FEB 22, 2007
SCALE PROJECT NO. 05-032



DRAWING TITLE
ELECTRICAL FIRST FLOOR POWER PLAN

SHEET NUMBER
E3.01

- POWER NOTES:**
- REFER TO DRAWING E3.00 FOR LEGEND, SYMBOLS AND GENERAL NOTES.
 - REFER TO INSTALLATION DRAWINGS FOR ASSOCIATED NOTES, MOUNTING DETAILS, HEIGHTS AND EXACT LOCATIONS OF ALL DEVICES.
 - CIRCUIT NUMBERS ARE DIAGRAMMATIC. EXACT NUMBERS SHALL BE DETERMINED IN THE FIELD AND REFLECTED ON AS-BUILT DOCUMENTATION BY THE ELECTRICAL CONTRACTOR. BRANCH CIRCUITS LONGER THAN 75' FOR 120V FROM PANEL TO OUTLET SHALL BE LARGER THAN 12 AWG UNLESS OTHERWISE SPECIFIED. INTERCONNECTING BRANCH WIRING SHALL BE SIZED EQUAL TO THE HOMERUN UNLESS INDICATED OTHERWISE.
 - ALL WIRING HAS BEEN CONSIDERED IN THE DESIGN OF ALL BRANCH CIRCUITRY AND FEEDER SIZES BASED UPON THE ILLUSTRATED EQUIPMENT LOADS AND SHORTEST CONDUIT/RACEWAY ROUTING. THE ELECTRICAL CONTRACTOR SHALL BE RESPONSIBLE FOR VERIFYING THE EQUIPMENT LOADS AND FEEDER SIZES. FEEDER SIZES SHALL FOLLOW NMIC AND NEC REQUIREMENTS. FEEDER SIZES SHALL FOLLOW NMIC AND NEC REQUIREMENTS. FEEDER SIZES SHALL FOLLOW NMIC AND NEC REQUIREMENTS.
 - POWER BRANCH CIRCUITRY SHALL BE INSTALLED IN CONDUIT (RGS).
 - PROVIDE COMPRESSION TERMINATIONS TO ENABLE TERMINATION OF OVERSIZED CONDUCTORS DUE TO VOLTAGE DROP.
 - PROVIDE HEAT TRACE (HW/T) FOR PLUMBING PIPING AS INDICATED. ALL PIPE AND INSTANTANEOUS HEAT TRACE SYSTEM MANUFACTURER PRIOR TO INSTALLATION. REFER TO TYPICAL FREEZE PROTECTION HEAT TRACE INSTALLATION AND HEAT TRACE SYSTEM MANUFACTURER PRIOR TO INSTALLATION. ALL HEAT TRACE BRANCH CIRCUITS SHALL BE IN HEAT TRACE CONTROL PANEL.
 - PROVIDE WORKBOX AND 1" EMPTY CONDUIT WITH PULLWIRE FOR INTERCOM STATION AND CCTV CAMERAS AS INDICATED. CONDUIT SHALL BE STIBBERED OUT ABOVE AND PROVIDE CONDUIT BUSHINGS AT BOTH ENDS.
 - ADD ALTERNATE CCTV SYSTEM PROVIDE EMPTY CONDUIT/WORKBOXES FOR CONTROL AND POWER CONNECTION AS INDICATED. REFER TO TYPICAL FREEZE PROTECTION HEAT TRACE INSTALLATION AND HEAT TRACE SYSTEM MANUFACTURER PRIOR TO INSTALLATION. REFER TO TYPICAL FREEZE PROTECTION HEAT TRACE INSTALLATION AND HEAT TRACE SYSTEM MANUFACTURER PRIOR TO INSTALLATION. REFER TO TYPICAL FREEZE PROTECTION HEAT TRACE INSTALLATION AND HEAT TRACE SYSTEM MANUFACTURER PRIOR TO INSTALLATION.



ELECTRICAL - POWER FIRST FLOOR PLAN
SCALE: 1/8"=1'-0"

