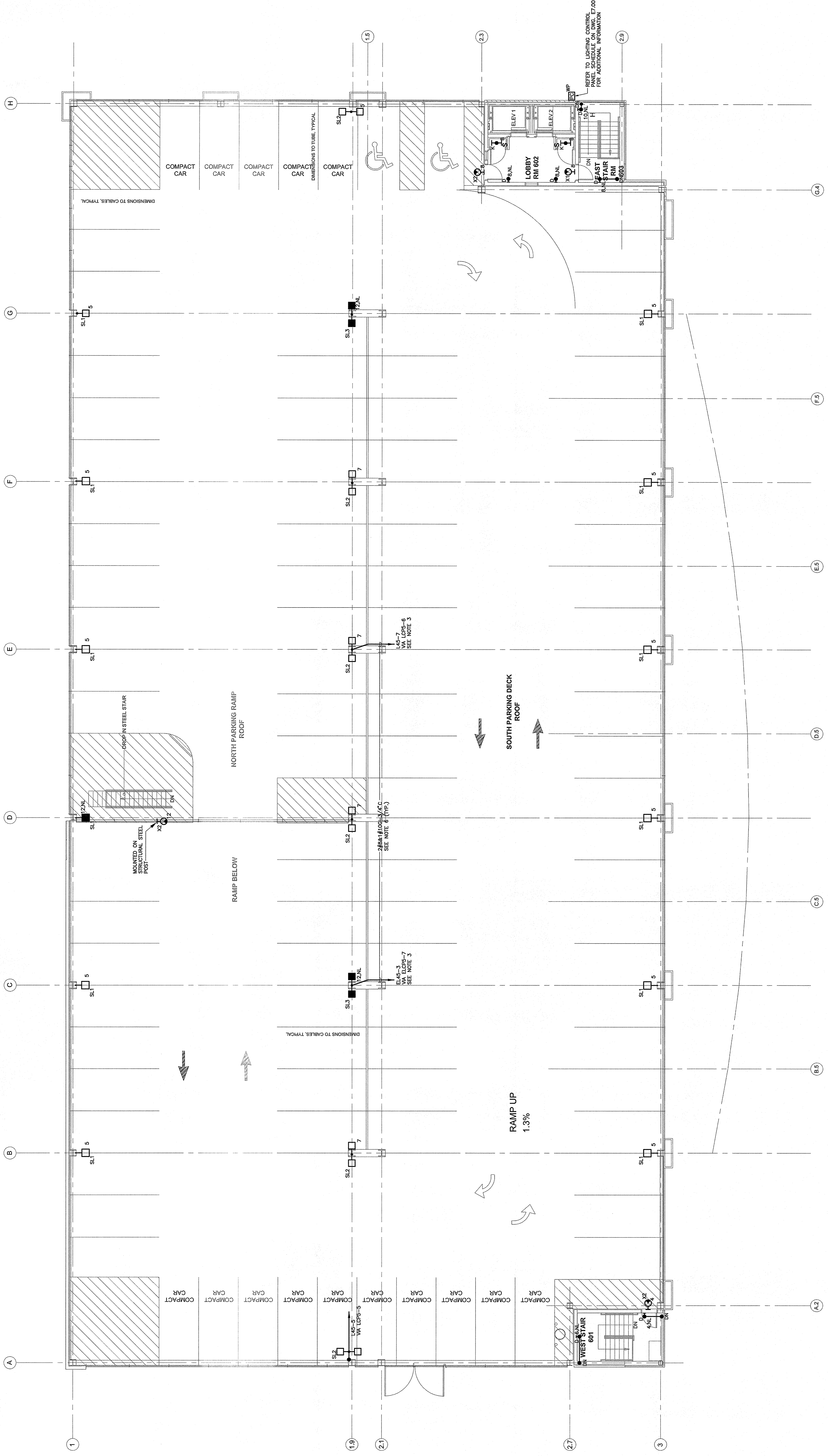


- LIGHTING NOTES:**
1. REFER TO DRAWING 5000 FOR LEGEND, SYMBOLS AND GENERAL NOTES.
 2. REFER TO ARCHITECTURAL DRAWINGS FOR DIMENSIONS. REFER TO REFLECTED CEILING PLANS AND ELEVATIONS FOR ASSOCIATED NOTES, MOUNTING DETAILS AND EXACT LOCATIONS OF ALL LIGHTING FIXTURES.
 3. SEE DRAWING 5000 FOR LOCATION OF PANELS.
 4. CIRCUIT NUMBERS ARE DIAGRAMMATIC. EXACT NUMBERS SHALL BE DETERMINED IN THE FIELD AND REFLECTED ON AS-BUILT DOCUMENTATION BY THE CONTRACTOR. THE CONTRACTOR SHALL BE RESPONSIBLE FOR THE LEG NOMENCLATURE THAT IS APPLIED TO EACH LIGHTING FIXTURE AND CONTROLLING DEVICE IN THE INTERCONNECTING BRANCH CIRCUIT.
 5. VOLTAGE DROPS HAVE BEEN CONSIDERED IN THE DESIGN OF THIS BRANCH LAYOUTS AND SHORTEST CONDUCTOR/RACEWAY ROUTING. THE CONTRACTOR SHALL BE RESPONSIBLE FOR VERIFYING THE ACTUAL VOLTAGE DROPS. CONDUCTOR/RACEWAY SIZES SHALL BE DETERMINED BY THE CONTRACTOR FOR 120V AND 175V FOR 277V FROM PANEL TO LAST OUTLET SHALL BE LIMITED TO 3% AND 1.5% RESPECTIVELY. VOLTAGE DROP TO LESS THAN 3%.
 6. PROVIDE COMPRESSION TERMINATIONS TO ENABLE TERMINATION OF OVERSIZED CONDUCTORS DUE TO VOLTAGE DROP.
 7. LIGHTING BRANCH CIRCUITRY SHALL BE INSTALLED RIGID STEEL (RGS) IN CONDUIT. REFER TO SPECIFICATION FOR ADDITIONAL INFORMATION.



ELECTRICAL - LIGHTING ROOF PLAN
SCALE: 1/8"=1'-0"