

CONSTRUCTION SET

OWNER
RIVERWALK, LLC
 2 MARKET STREET,
 SUITE 500
 PORTLAND, ME 04101
CLIENT

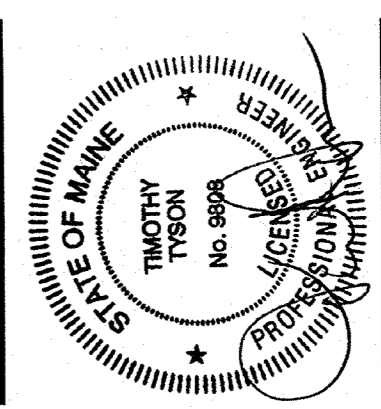
RIVERWALK, LLC
 2 MARKET STREET,
 SUITE 500
 PORTLAND, ME 04101
PROJECT

OCEAN GATEWAY PARKING GARAGE
 MIDDLE STREET
 PORTLAND, MAINE

REVISIONS

NO. DATE DESCRIPTION
 08/10/07 BULLETIN J

DATE FEB 22, 2007
 SCALE PROJECT NO. 05-032

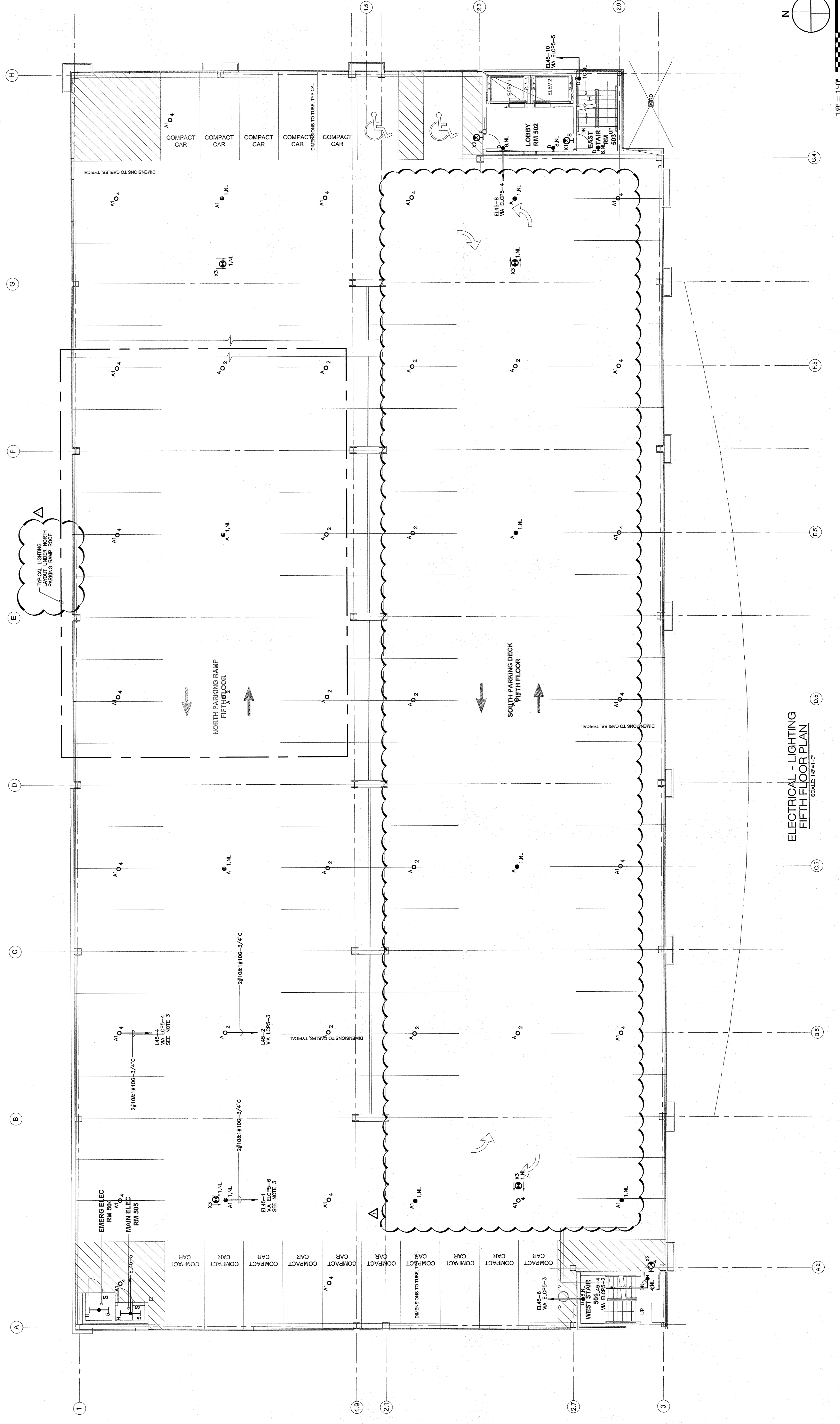


DRAWING TITLE
ELECTRICAL FIFTH FLOOR LIGHTING PLAN

SHEET NUMBER

E2.05

- LIGHTING NOTES:**
1. REFER TO DRAWING E2.00 FOR LEGEND, SYMBOLS AND GENERAL NOTES. FOR SCHEDULES AND RISERS, REFER TO DWG. E7.00.
 2. REFER TO ARCHITECTURAL DRAWINGS, INCLUDING BUT NOT LIMITED TO, SECTION ELEVATIONS, FINISH SCHEDULES AND EXACT LOCATIONS OF ALL LIGHTING FIXTURES. MOUNTING DETAILS AND EXACT LOCATIONS OF ALL LIGHTING FIXTURES.
 3. SEE DRAWING E2.00 FOR LOCATION OF PANELS.
 4. DEVICE NUMBERS ARE DIAGNOSTIC. EXACT NUMBERS SHALL BE DETERMINED IN THE FIELD AND REFLECTED ON AS-BUILT DOCUMENTATION BY THE ELECTRICAL CONTRACTOR. USE OF THE AS-BUILT DOCUMENTATION AND THE ELECTRICAL CONTRACTOR'S JUDGMENT SHALL BE REQUIRED TO DETERMINE THE CONTROLLING DEVICE INFER INTERCONNECTING BRANCH CIRCUITRY.
 5. VOLTAGE DROP HAS BEEN CONSIDERED IN THE DESIGN OF ALL BRANCH CIRCUIT AND FEEDER SIZES BASED UPON THE ILLUSTRATED EQUIPMENT LOADS. THE CONTRACTOR SHALL BE RESPONSIBLE FOR DEVIATIONS TAKEN THAT WILL INCREASE OVER THE DESIGN LOADS. THE CONTRACTOR SHALL BE RESPONSIBLE FOR INCREASED A MINIMUM OF ONE SIZE ABOVE THAT SPECIFIED TO LIMIT VOLTAGE DROP TO LESS THAN 3%.
 6. ALL FEEDER CONDUCTORS SHALL BE INSTALLED TO ENABLE TERMINATION OF CONDUIT.
 7. LIGHTING BRANCH CIRCUITRY SHALL BE INSTALLED RIGID STEEL (RGS) IN CONDUIT. REFER TO SPECIFICATION FOR ADDITIONAL INFORMATION.



ELECTRICAL - LIGHTING FIFTH FLOOR PLAN
 SCALE: 1/8"=1'-0"