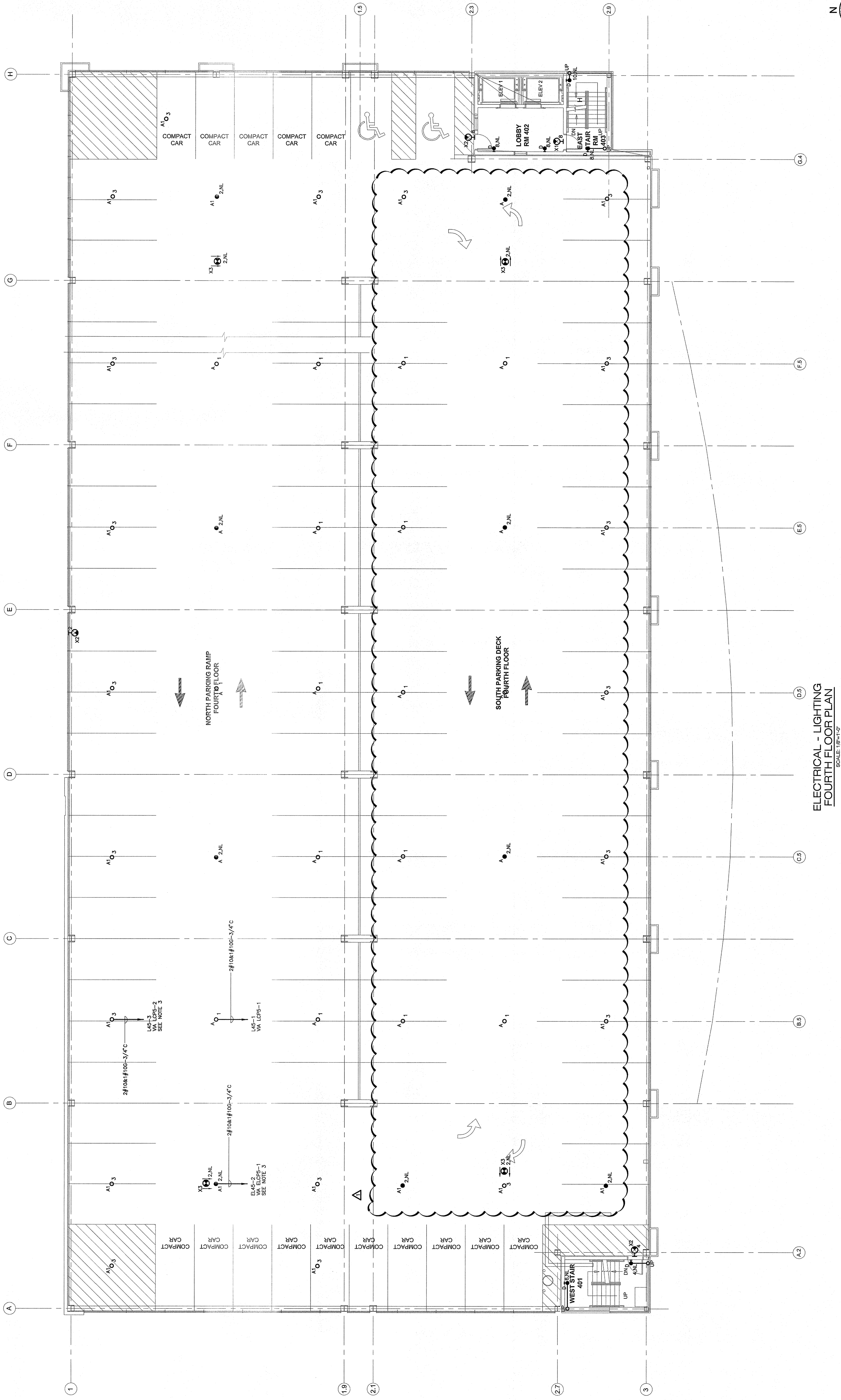
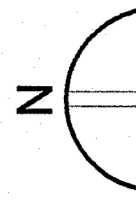


- LIGHTING NOTES:**
1. REFER TO DRAWING E2.03 FOR LEGEND, SYMBOLS AND GENERAL NOTES. FOR SYMBOLS AND RISERS, REFER TO DRAW. E2.04.
 2. ALL LIGHTING FIXTURES SHALL BE INSTALLED TO REFLECTED CEILING BEAMS AND ELEVATIONS FOR ASSOCIATED NOTES. MOUNTING DETAILS AND EXACT LOCATIONS OF ALL LIGHTING FIXTURES.
 3. SEE DRAWING E2.05 FOR LOCATION OF PANELS.
 4. CIRCUIT NUMBERS ARE DIAGRAMMATIC. EXACT NUMBERS SHALL BE DETERMINED IN THE FIELD AND REFLECTED ON AS-BUILT DOCUMENTATION BY THE CONTRACTOR. ALL CIRCUIT NUMBERS SHALL BE IDENTIFIED BY LEG NOMENCLATURE THAT ARE APPLIED TO EACH LIGHTING FIXTURE AND CONTROLLING DEVICE INFER INTERCONNECTING BRANCH CIRCUITRY.
 5. VOLTAGE DROP HAS BEEN CONSIDERED IN THE DESIGN OF ALL BRANCH LAYOUTS AND SHORTEST CONDUCTOR/RACEWAY ROUTING. THE CONTRACTOR SHALL VERIFY THAT ALL BRANCH CIRCUITS ARE INSTALLED TO EXCEED THE 3% VOLTAGE DROP FOR 120V AND 175% FOR 277V FROM PANEL TO LAST OUTLET SHALL BE MAINTAINED. ALL CONDUCTOR SIZES ABOVE THAT SPECIFIED TO LIMIT VOLTAGE DROP TO LESS THAN 3%.
 6. PROVIDE COMPRESSION TERMINATIONS TO ENABLE TERMINATION OF OVERSIZED CONDUCTORS DUE TO VOLTAGE DROP.
 7. LIGHTING BRANCH CIRCUITRY SHALL BE INSTALLED RIGID STEEL (RGS) IN CONDUIT. REFER TO SPECIFICATION FOR ADDITIONAL INFORMATION.



ELECTRICAL - LIGHTING
FOURTH FLOOR PLAN
 SCALE: 1/8"=1'-0"



1/8" = 1'-0" 0 8 16