

CONSTRUCTION SET

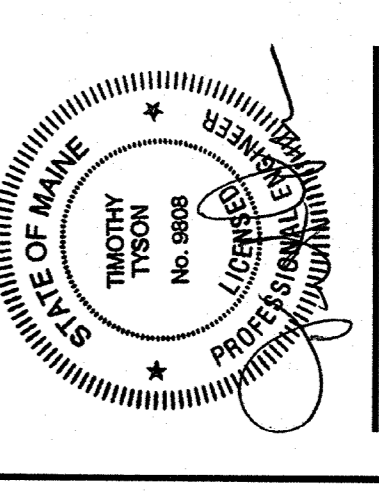
OWNER
RIVERWALK, LLC
 2 MARKET STREET,
 SUITE 500
 PORTLAND, ME 04101
CLIENT

RIVERWALK, LLC
 2 MARKET STREET,
 SUITE 500
 PORTLAND, ME 04101
PROJECT

OCEAN GATEWAY PARKING GARAGE
 MIDDLE STREET
 PORTLAND, MAINE

REVISIONS
 NO. DATE DESCRIPTION
 A 08/10/07 BULLETIN 1

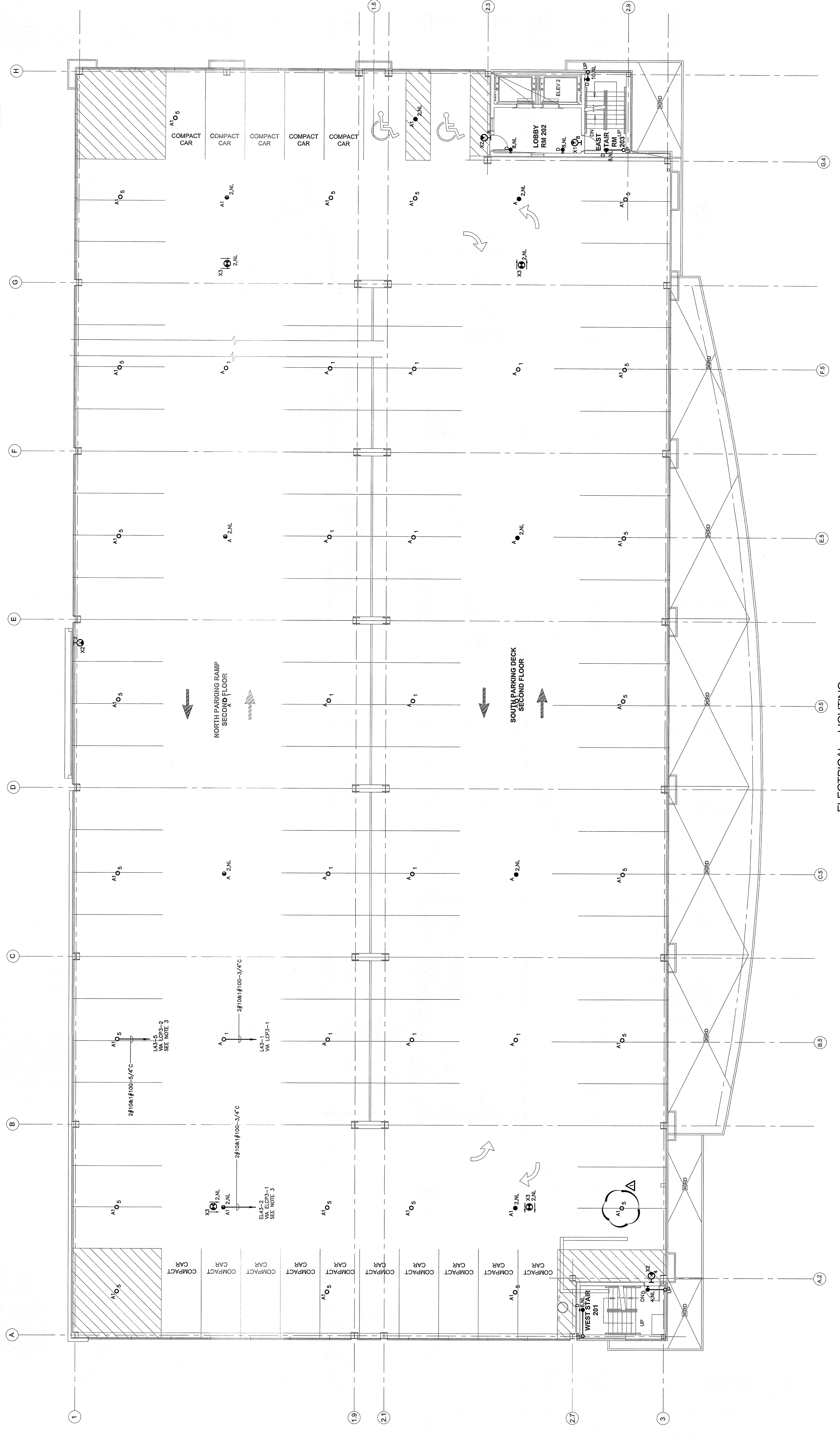
DATE FEB 22, 2007
 SCALE PROJECT NO. 05-032



DRAWING TITLE
ELECTRICAL SECOND FLOOR LIGHTING PLAN

SHEET NUMBER
F2.02

- LIGHTING NOTES:**
1. REFER TO DRAWING E2.01 FOR LEGEND, SYMBOLS AND GENERAL NOTES. FOR SCHEDULES AND RISERS, REFER TO DWG. E7.00.
 2. REFER TO ARCHITECTURAL DRAWINGS, INCLUDING BUT NOT LIMITED TO, FINISH SCHEDULES, WALL FINISHES, PARTITION WALLS, AND MOUNTING DETAILS AND EXACT LOCATIONS OF ALL LIGHTING FIXTURES.
 3. SEE DRAWING E2.03 FOR LOCATION OF PANELS.
 4. ALL LIGHTING FIXTURES SHALL BE DETERMINED IN THE FIELD AND REFLECTED ON AS-BUILT DOCUMENTATION BY THE ELECTRICAL CONTRACTOR. THE ASSOCIATED CIRCUIT NUMBER AND SWITCH CONTROLLING DEVICE SHALL BE IDENTIFIED ON THE DRAWING. THE SWITCH CONTROLLING DEVICE SHALL INTERCONNECT BRANCH CIRCUITRY.
 5. VOLTAGE DROP HAS BEEN CONSIDERED IN THE DESIGN OF ALL BRANCH CIRCUIT AND FEEDER SIZES BASED UPON THE ILLUSTRATED EQUIPMENT. THE CONTRACTOR SHALL BE RESPONSIBLE FOR DEVIATIONS FROM THE ILLUSTRATED EQUIPMENT. CONDUCTOR/RACEWAY ROUTING LENGTHS, BRANCH CIRCUIT LENGTHS, LOWER THAN ILLUSTRATED, SHALL BE IDENTIFIED ON THE DRAWING. ALL CIRCUIT LENGTHS SHALL BE INCREASED A MINIMUM OF ONE SIZE ABOVE THAT SPECIFIED TO LIMIT VOLTAGE DROP TO LESS THAN 3%.
 6. PROVIDE COMPRESSION TERMINATIONS TO ENABLE TERMINATION OF OVERCURRENT PROTECTIVE DEVICES TO VOLTAGE DROP.
 7. ALL LIGHTING FIXTURES SHALL BE IDENTIFIED BY MODEL NUMBER (MOS) IN CONDUIT. REFER TO SPECIFICATION FOR ADDITIONAL INFORMATION.



ELECTRICAL - LIGHTING SECOND FLOOR PLAN
 SCALE: 1/8"=1'-0"

