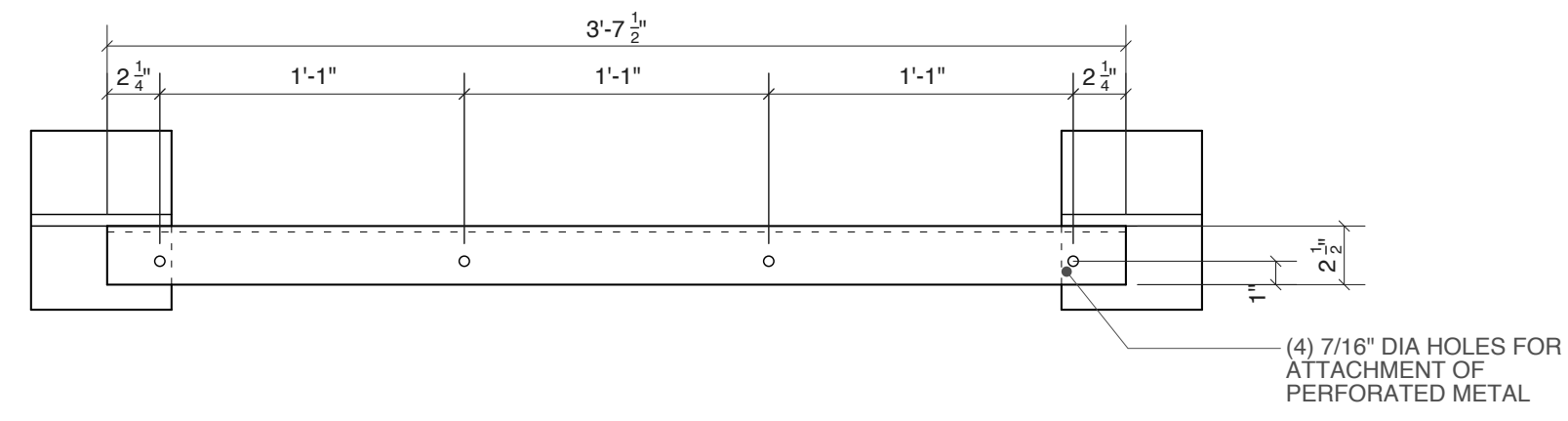
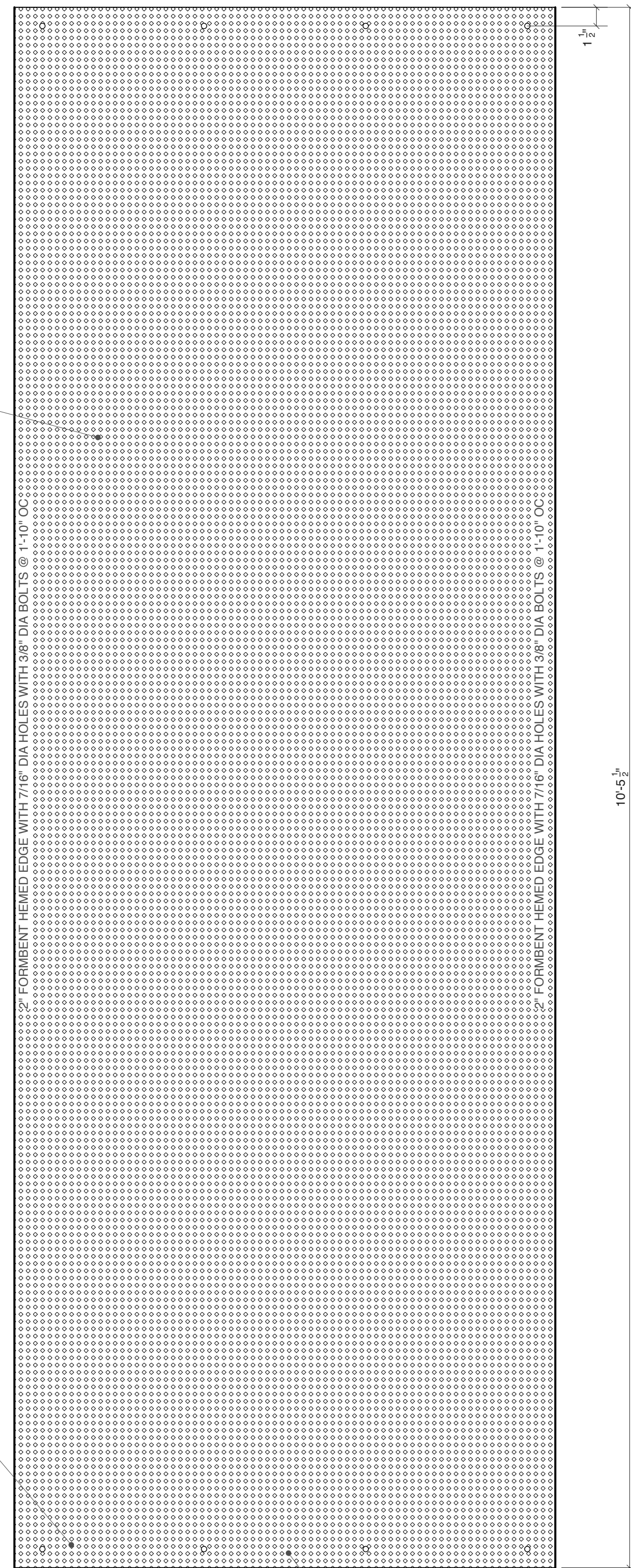


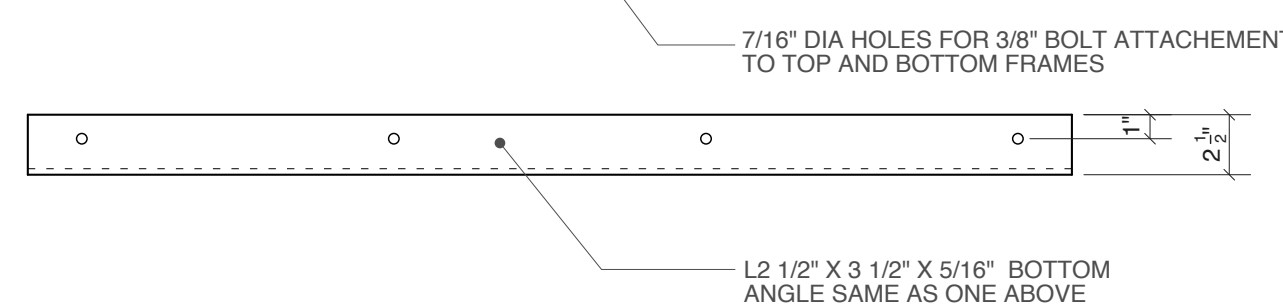
1 FRAME PLAN DETAIL  
SCALE : 1 1/2" = 1'-0"



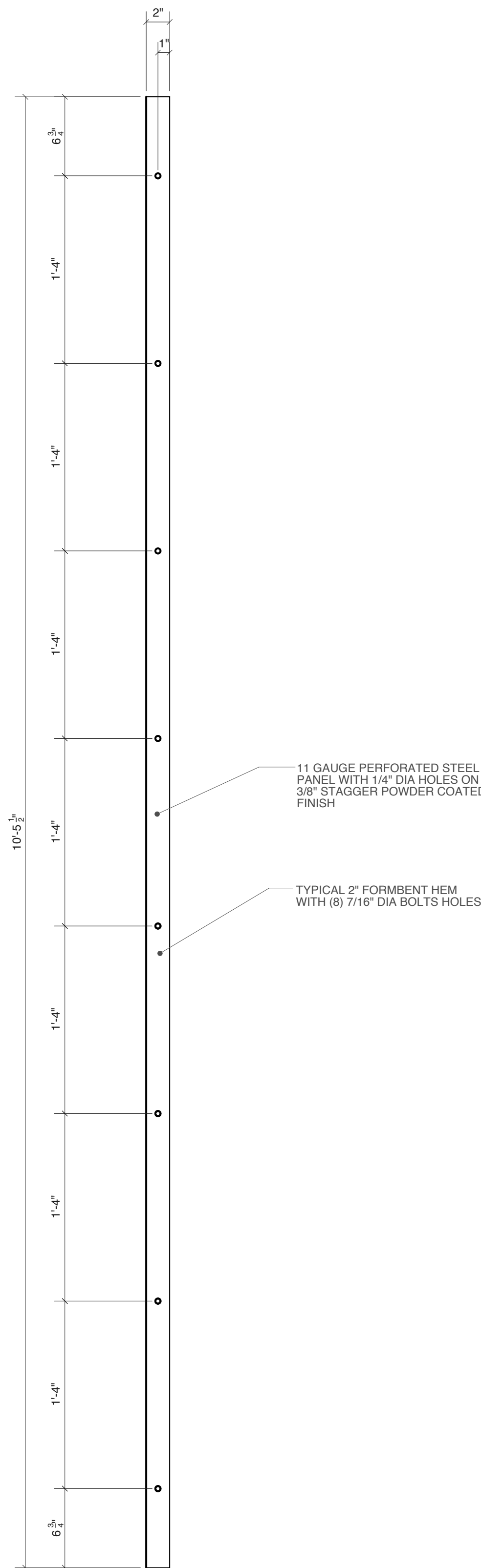
11 GAUGE PERFORATED STEEL PANEL WITH 1/4" DIA HOLES ON 3/8" STAGGER POWDER COATED FINISH



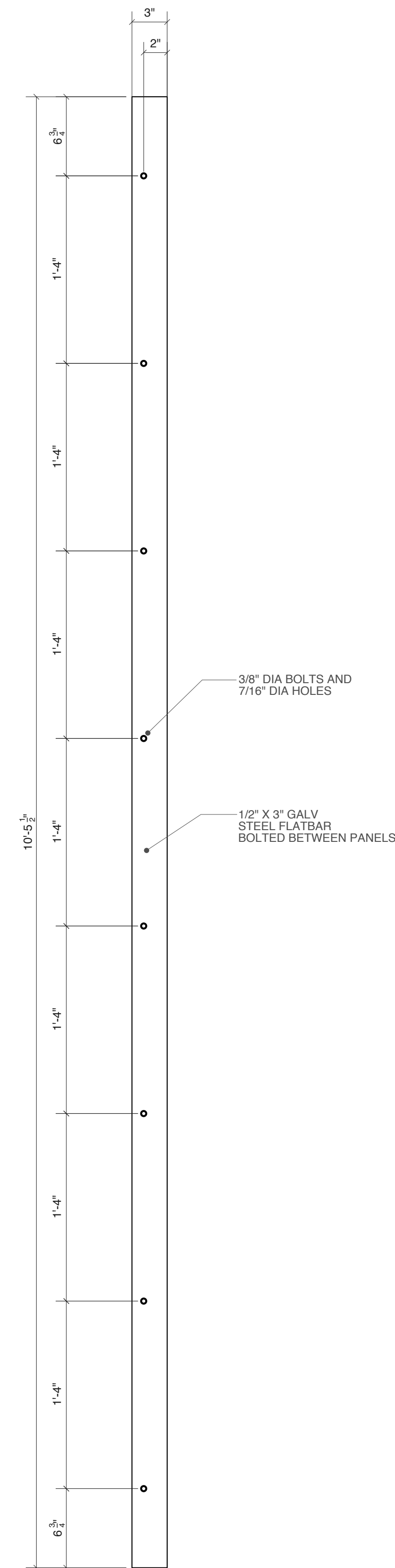
FINAL PERF PANEL TO ANGLE FRAME BOLTED CONNECTION SPACING AND BOLT SIZE TO BE COORDINATED AND DESIGNED BY MISC METALS FABRICATOR



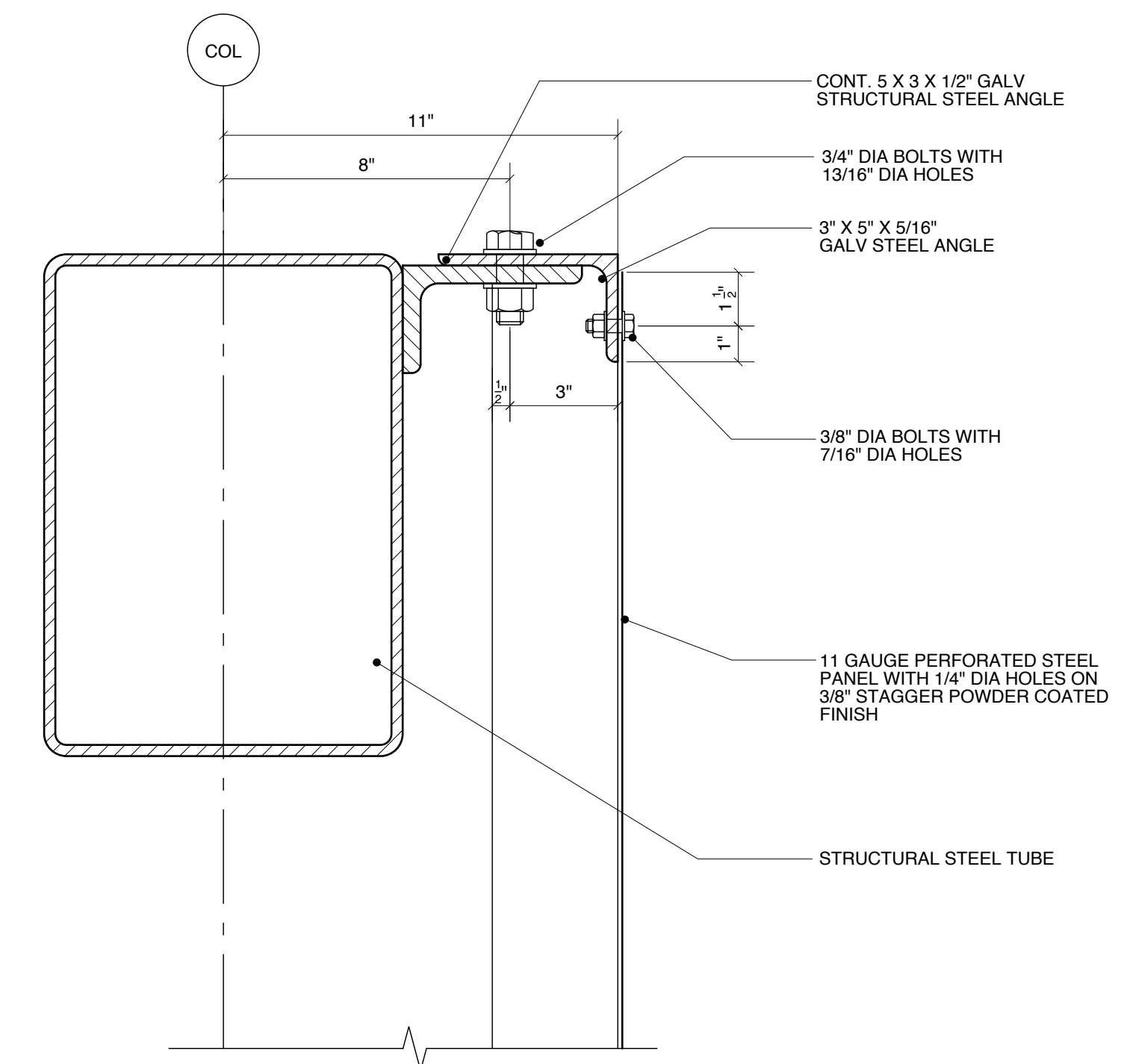
5 FRAME & PANEL ELEVATION  
SCALE : 1 1/2" = 1'-0"



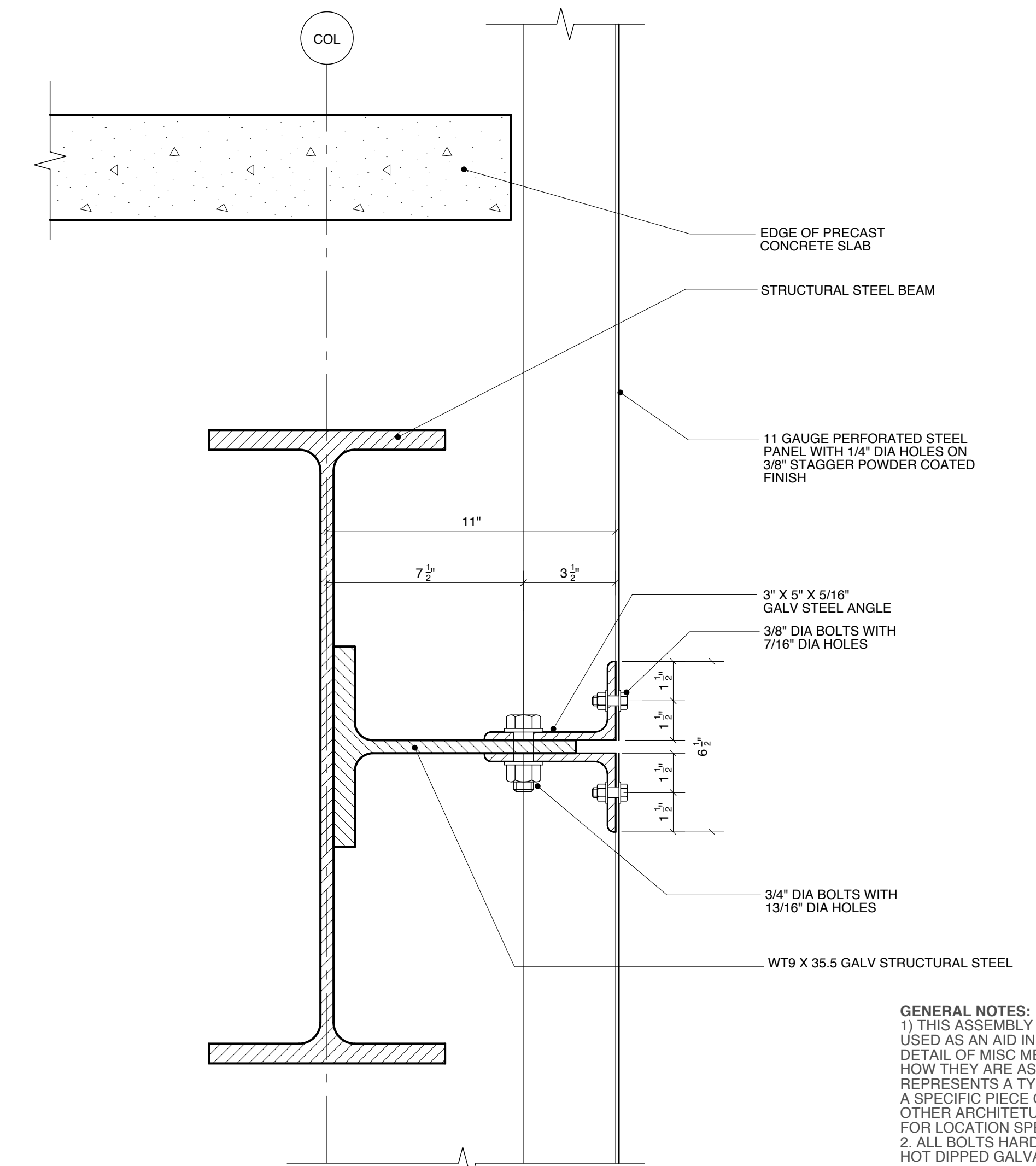
6 PANEL EDGE ELEVATION  
SCALE : 1 1/2" = 1'-0"



7 FLATBAR SUPPORT ELEVATION  
SCALE : 1 1/2" = 1'-0"



4 TOP FRAME SECTION DETAIL  
SCALE : 3" = 1'-0"



8 TYPICAL FRAME SECTION DETAIL  
SCALE : 3" = 1'-0"

GENERAL NOTES:  
1) THIS ASSEMBLY DRAWING SHALL BE USED AS AN AID IN UNDERSTANDING THE DETAIL OF MISC METALS COMPONENTS AND HOW THEY ARE ASSEMBLED. THIS DRAWING REPRESENTS A TYPICAL ASSEMBLY, NOT A SPECIFIC PIECE OF THE GARAGE. SEE OTHER ARCHITECTURAL DETAIL DRAWINGS FOR LOCATION SPECIFIC INFORMATION.  
2. ALL BOLTS HARDWARE SHALL BE HOT DIPPED GALVANIZED.

STRUCTURAL PARKING ENGINEER:  
**SIMON DESIGN ENGINEERING LLC**  
42 Washington Street, Suite 300  
Wellesley, Massachusetts 02481  
www.sde-us.com

CIVIL ENGINEER:  
**WOODARD & CURRAN**  
Engineering • Science • Operations

ARCHITECT:  
**SSA**  
Scott Simons Architects  
SCOTT R. SIMONS  
NO. 2034  
STATE OF MAINE

PROJECT:  
**OCEAN GATEWAY  
PARKING GARAGE**  
MIDDLE STREET  
PORTLAND, MAINE

TITLE:  
**TYPICAL RECESSED  
SCREEN ASSEMBLY**

REVISION / DATE:  
ADDENDUM #1: MARCH 20, 2007  
PLANNING REVIEW: MAY 22, 2007  
BULLETIN #1: AUGUST 10, 2007

STATUS:  
**CONSTRUCTION DRAWINGS**

DATE:  
**08.06.2007**  
PROJECT NO.  
**2005-0161**  
SCALE:  
**AS NOTED**  
DWG NO.  
**A605**

THIS DRAWING IS THE PROPERTY OF SCOTT SIMONS ARCHITECTS AND IS NOT TO BE COPIED OR REPRODUCED IN PART OR WHOLE.

© 2007 Scott Simons Architects