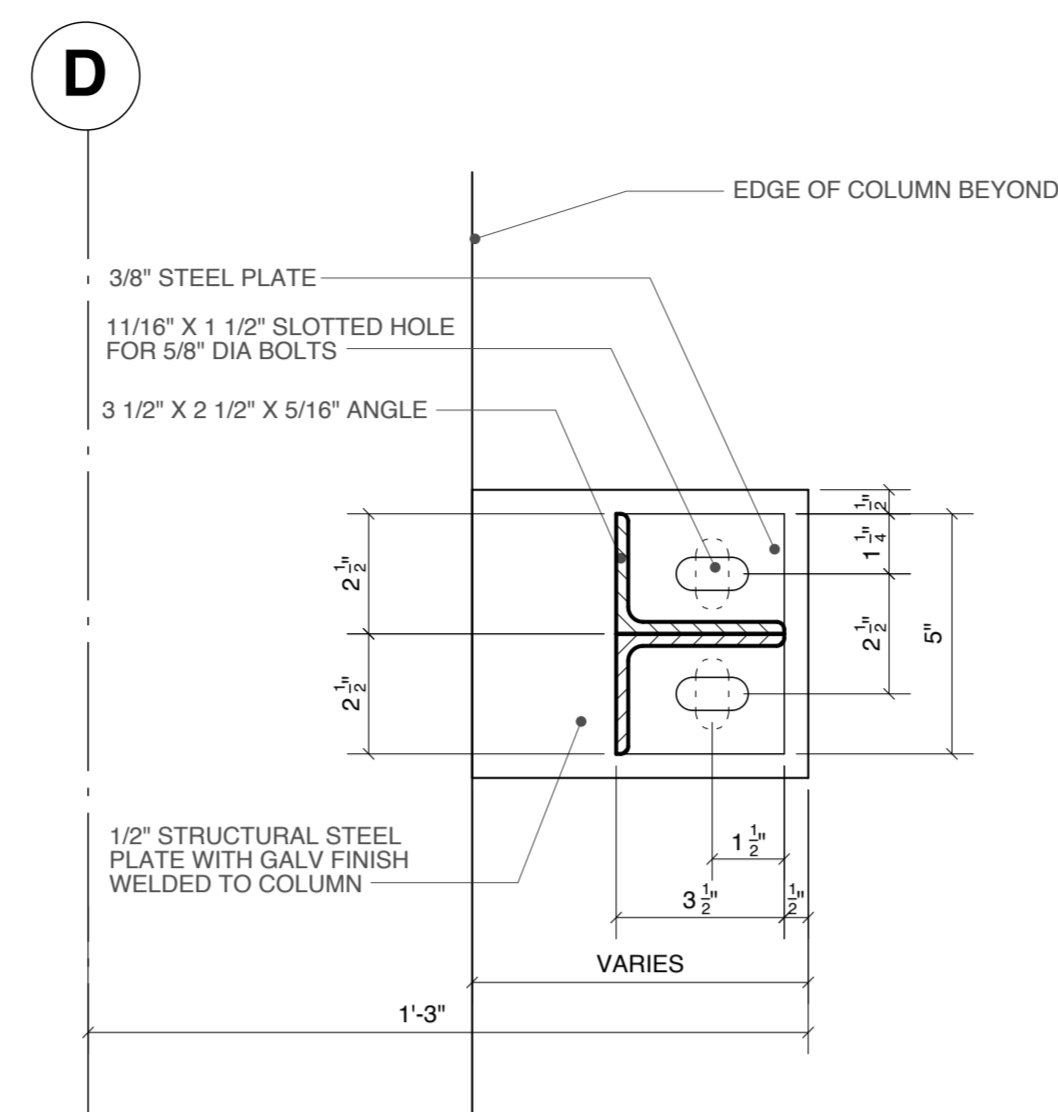
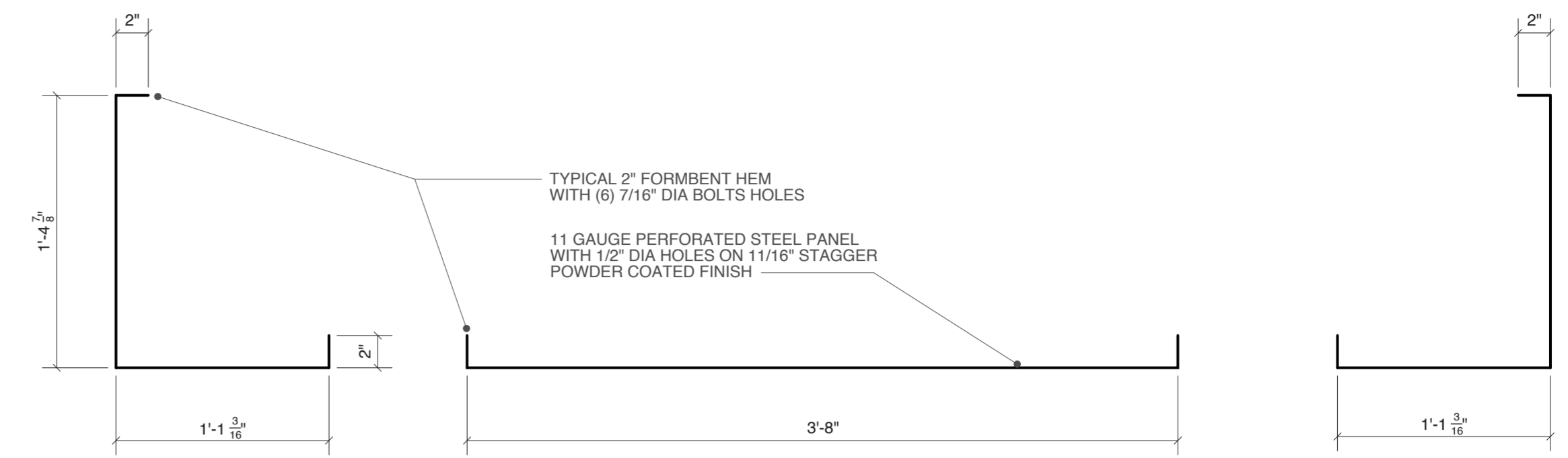


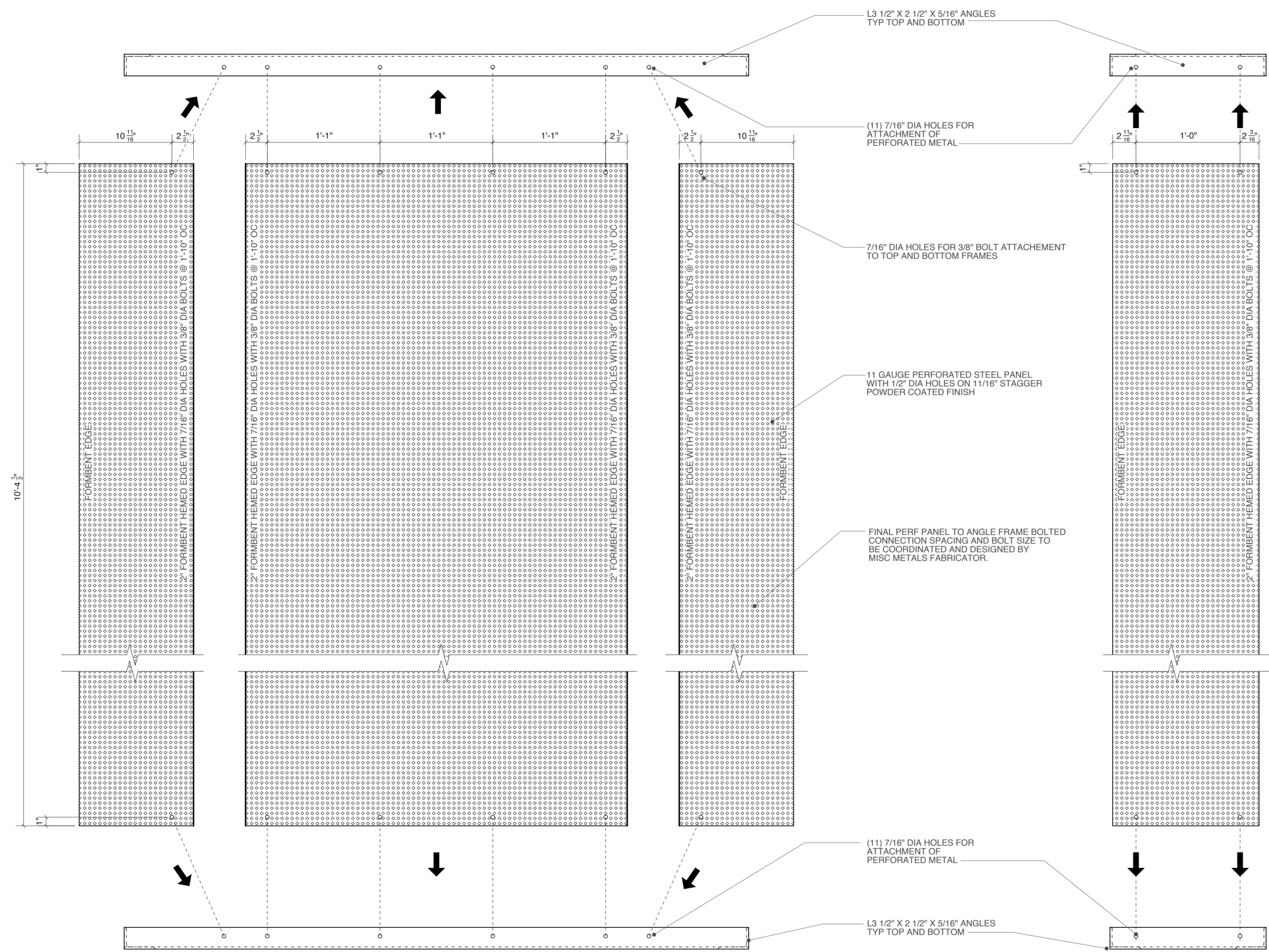
1 COLUMN WRAP FRAME PLAN  
SCALE : 1 1/2" = 1'-0"



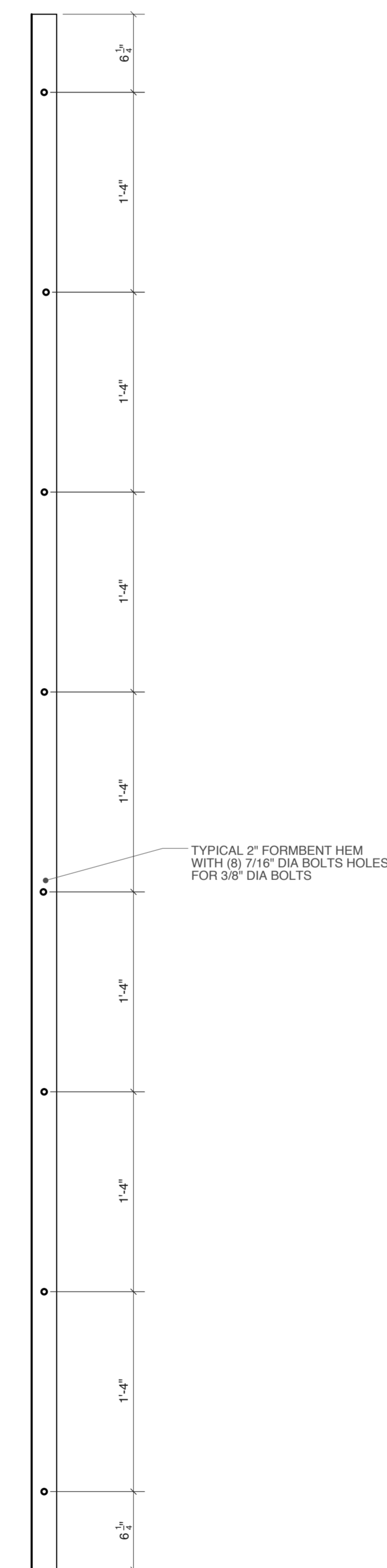
2 COLUMN WRAP CONNECTION DETAIL  
SCALE : 3" = 1'-0"



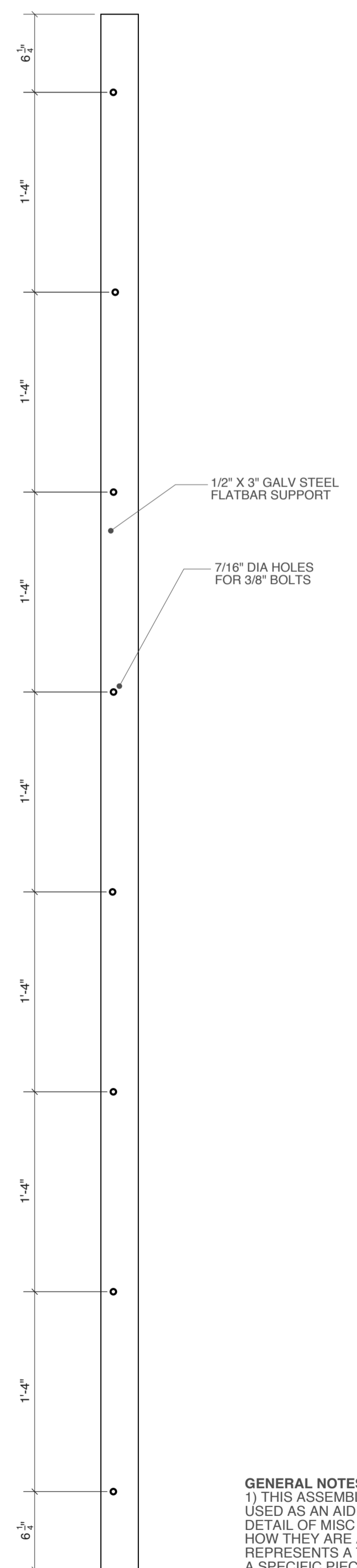
4 PANEL PLAN DETAILS  
SCALE : 1 1/2" = 1'-0"



6 PANEL ELEVATION DETAILS  
SCALE : 1 1/2" = 1'-0"



7 PANEL CONNECTION DETAIL  
SCALE : 1 1/2" = 1'-0"



8 COLUMN WRAP FRAME DETAIL  
SCALE : 1 1/2" = 1'-0"

GENERAL NOTES:  
1) THIS ASSEMBLY DRAWING SHALL BE USED AS AN AID IN UNDERSTANDING THE DETAIL OF MISC METALS COMPONENTS AND HOW THEY ARE ASSEMBLED. THIS DRAWING REPRESENTS A TYPICAL ASSEMBLY, NOT A SPECIFIC PIECE OF THE GARAGE. SEE OTHER ARCHITECTURAL DETAIL DRAWINGS FOR LOCATION SPECIFIC INFORMATION.  
2. ALL BOLTS HARDWARE SHALL BE HOT DIPPED GALVANIZED.

STRUCTURAL PARKING ENGINEER:  
**SIMON DESIGN ENGINEERING LLC**  
42 Washington Street, Suite 300  
Wellesley, Massachusetts 02481  
www.sde-us.com  
781.237.2226 tel  
781.237.2272 fax  
info@sde-us.com

CIVIL ENGINEER:  
**WOODARD & CURRAN**  
Engineering • Science • Operations

ARCHITECT:  
**SSA**  
Scott Simons Architects  
SCOTT R. SIMONS  
NO. 2034  
STATE OF MAINE  
LICENSED ARCHITECT

PROJECT:  
**OCEAN GATEWAY PARKING GARAGE**  
MIDDLE STREET  
PORTLAND, MAINE

TITLE:  
**TYPICAL COLUMN WRAP ASSEMBLY**

REVISION DATE:  
ADDENDUM #1: MARCH 20, 2007  
PLANNING REVIEW: MAY 22, 2007  
BULLETIN #1: AUGUST 10, 2007  
STATUS:  
**CONSTRUCTION DRAWINGS**

DATE:  
**08.06.2007**  
PROJECT NO.  
**2005-0161**  
SCALE:  
**AS NOTED**  
DWG NO.  
**A604**  
2007 © Scott Simons Architects  
THIS DRAWING IS THE PROPERTY OF SCOTT SIMONS ARCHITECTS AND IS NOT TO BE COPIED OR REPRODUCED IN PART OR WHOLE.