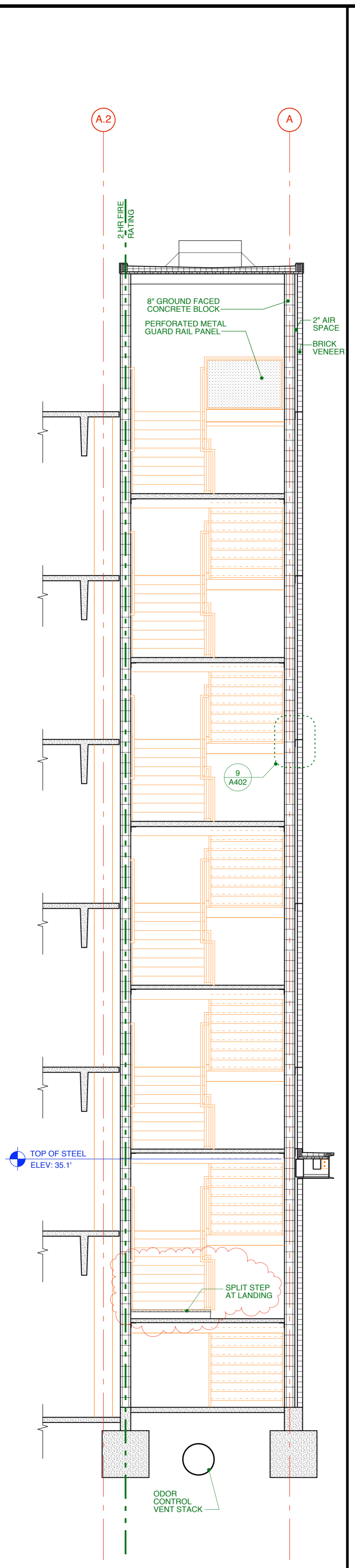
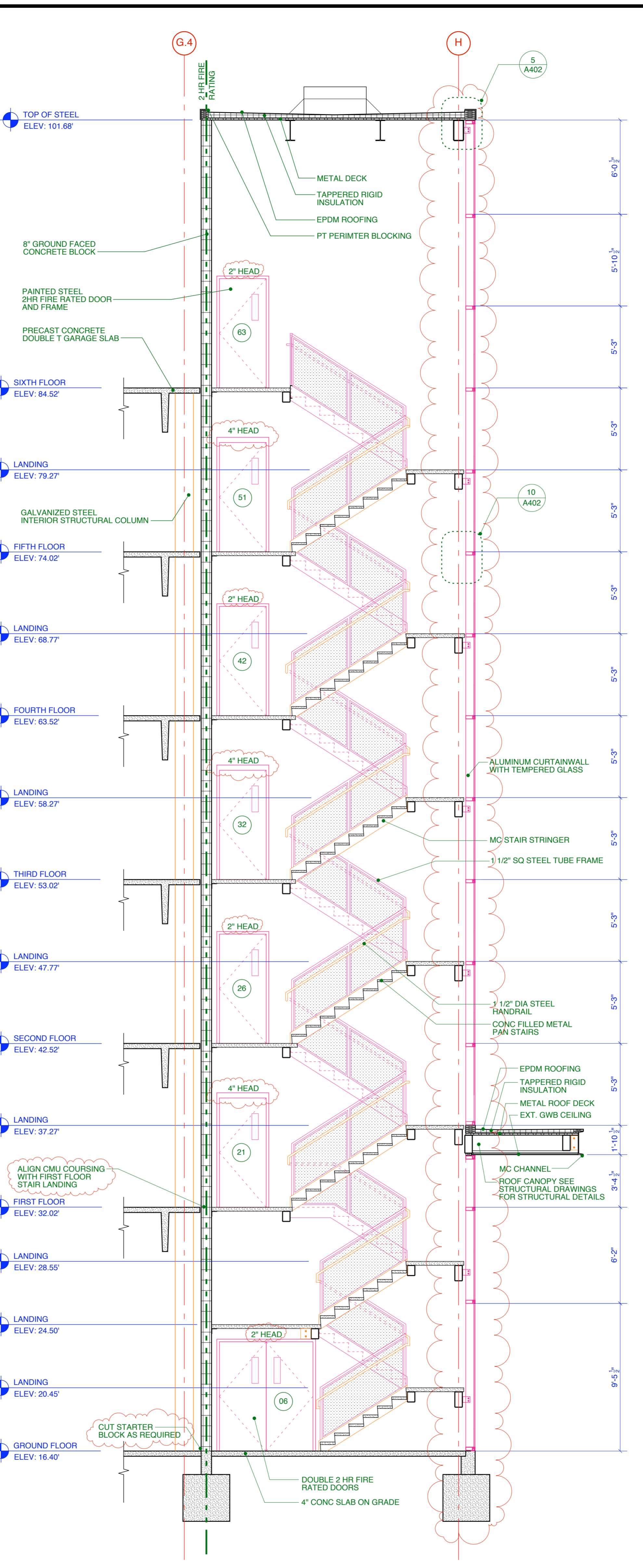


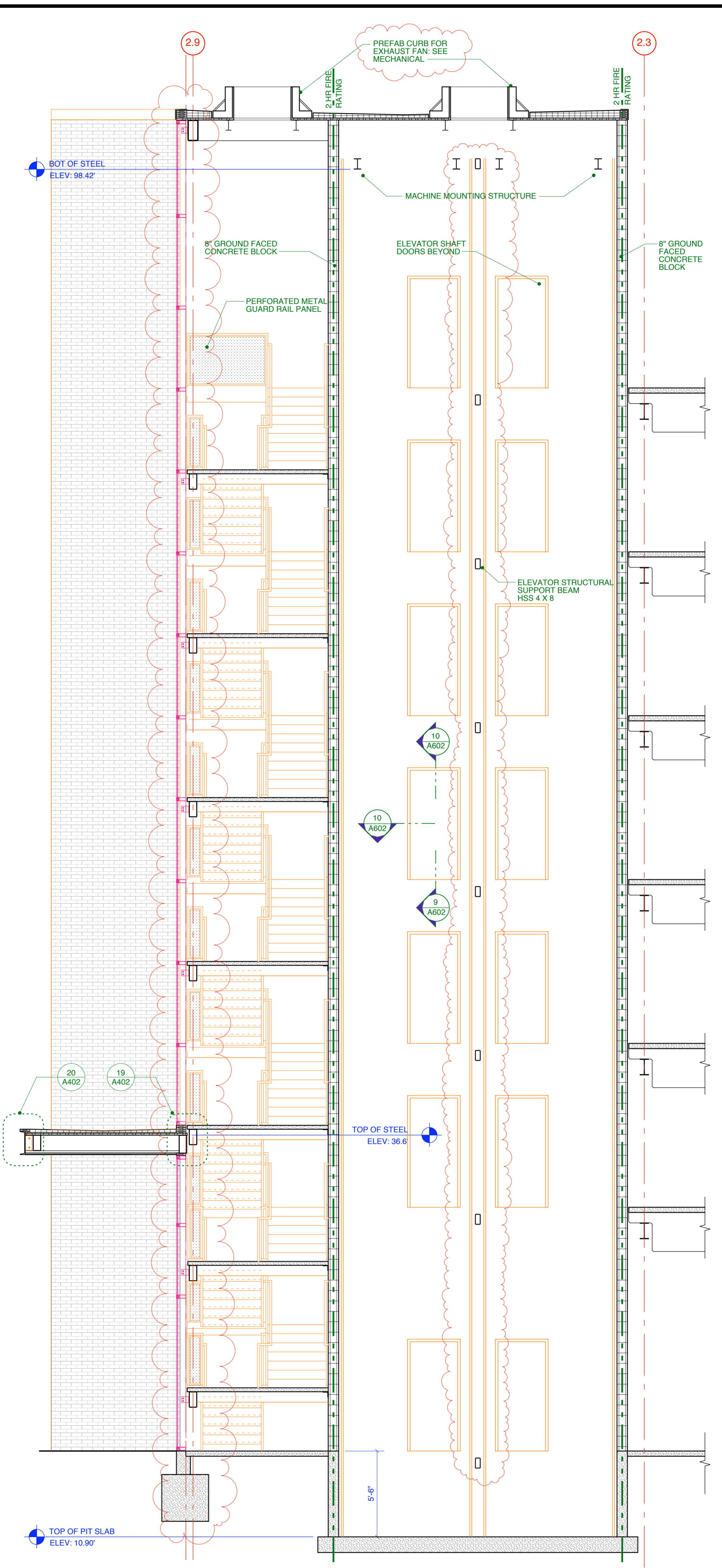
1 WEST STAIR N-S SECTION
A100 SCALE: 1/4" = 1'-0"



2 WEST STAIR E-W SECTION
A100 SCALE: 1/4" = 1'-0"



3 EAST STAIR W-E SECTION
A100 SCALE: 1/4" = 1'-0"



4 EAST STAIR S-N SECTION
A100 SCALE: 1/4" = 1'-0"

STRUCTURAL PARKING ENGINEER:
SIMON DESIGN ENGINEERING LLC
42 Washington Street, Suite 300 781.237.2226 tel
Wellesley, Massachusetts 02481 781.237.2272 fax
www.sde-us.com info@sde-us.com

CIVIL ENGINEER:
WOODARD & CURRAN
Engineering • Science • Operations

ARCHITECT:
SSA
Scott Simons Architects
SCOTT R. SIMONS
NO. 2034
STATE OF MAINE

PROJECT:
**OCEAN GATEWAY
PARKING GARAGE**
MIDDLE STREET
PORTLAND, MAINE

TITLE:
**STAIR
SECTIONS**

REVISION DATE:
ADDENDUM #1: MARCH 20, 2007
PLANNING REVIEW: MAY 22, 2007
BULLETIN #1: AUGUST 10, 2007
STATUS:
CONSTRUCTION DRAWINGS

DATE:
08.06.2007
PROJECT NO.
2005-0161
SCALE:
3/4" = 1'-0"
DWG NO.
A401
2007 © Scott Simons Architects
THIS DRAWING IS THE PROPERTY OF
SCOTT SIMONS ARCHITECTS
AND IS NOT TO BE COPIED OR
REPRODUCED IN PART OR WHOLE.