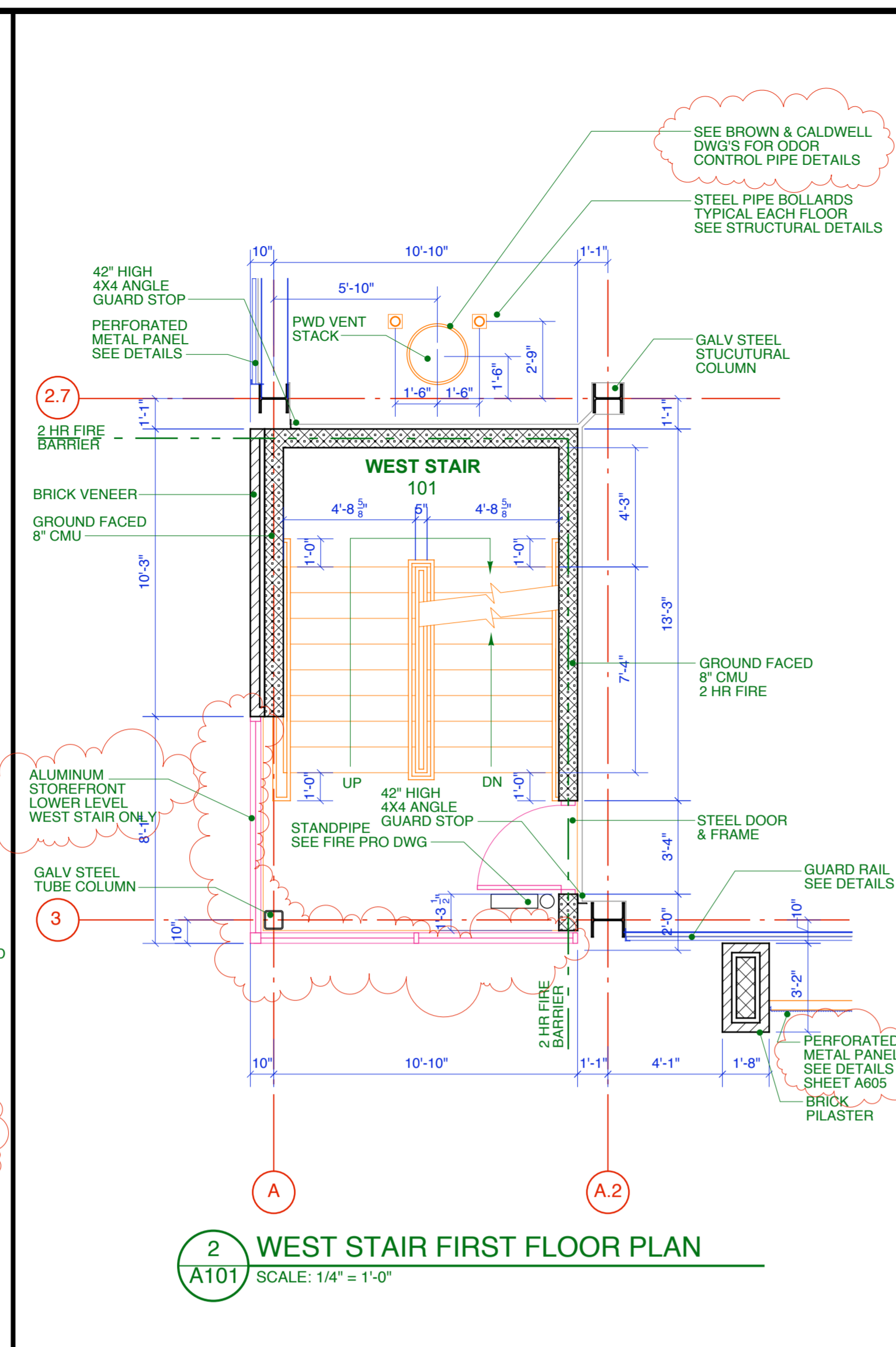
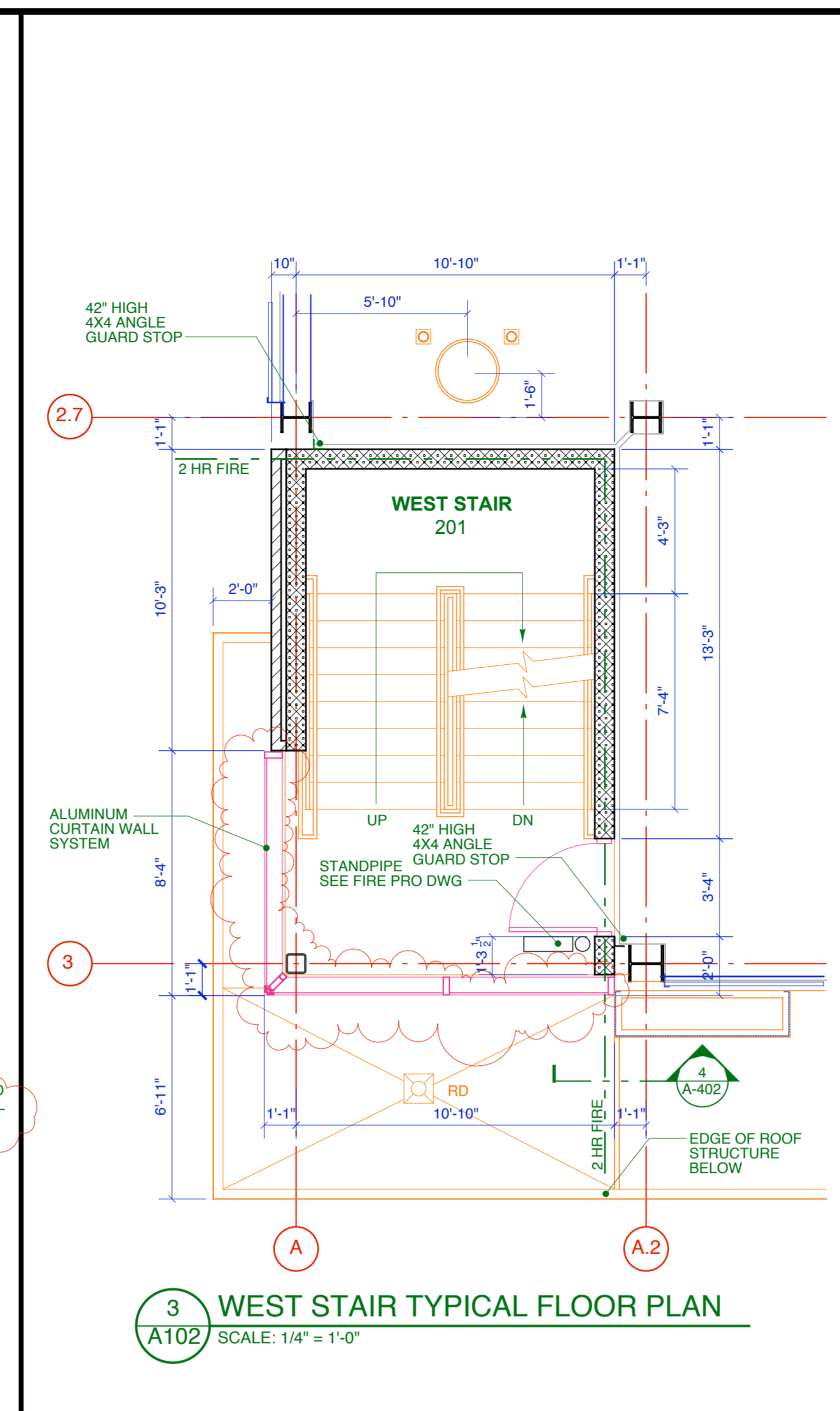


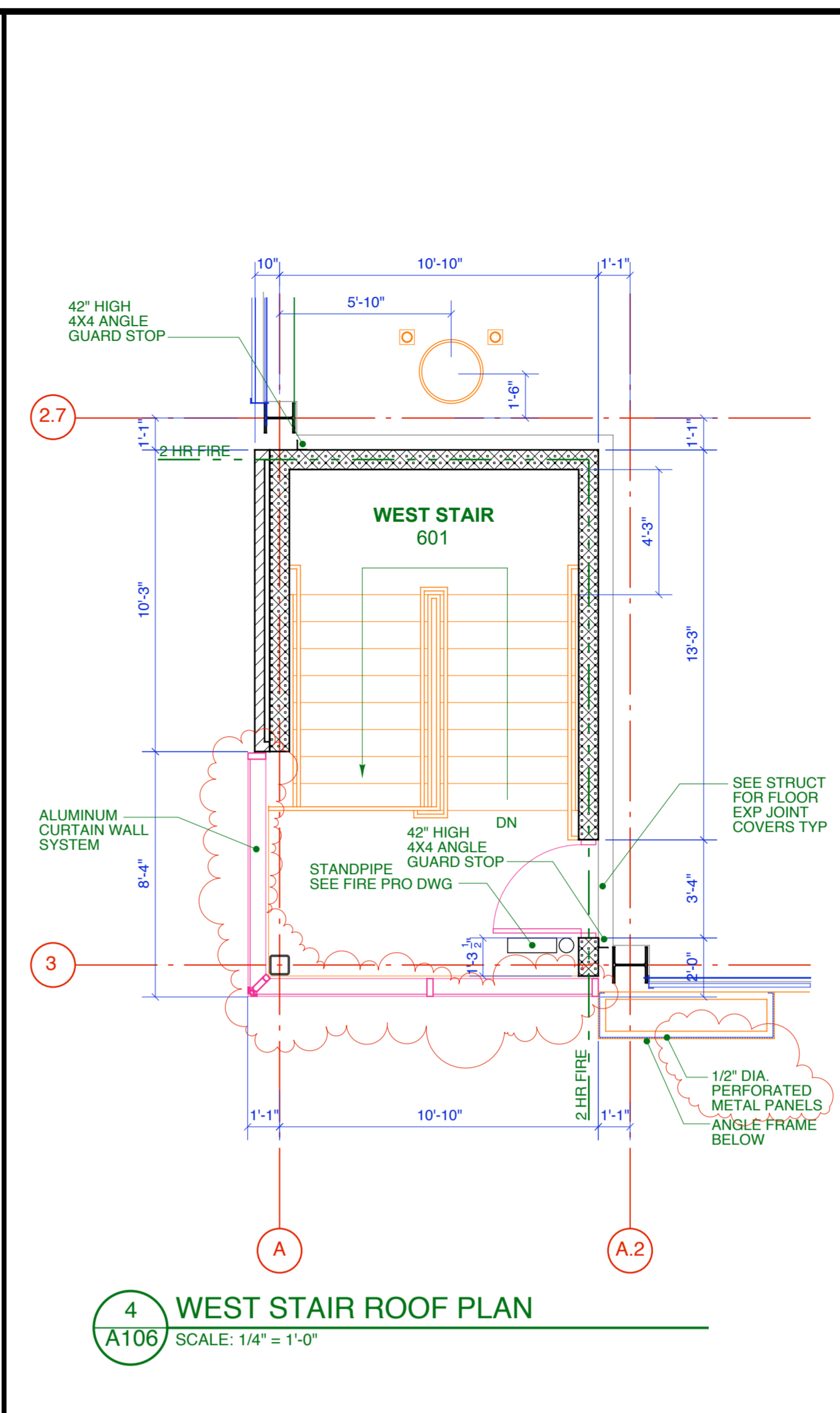
1 WEST STAIR GROUND FLOOR PLAN
A100 SCALE: 1/4" = 1'-0"



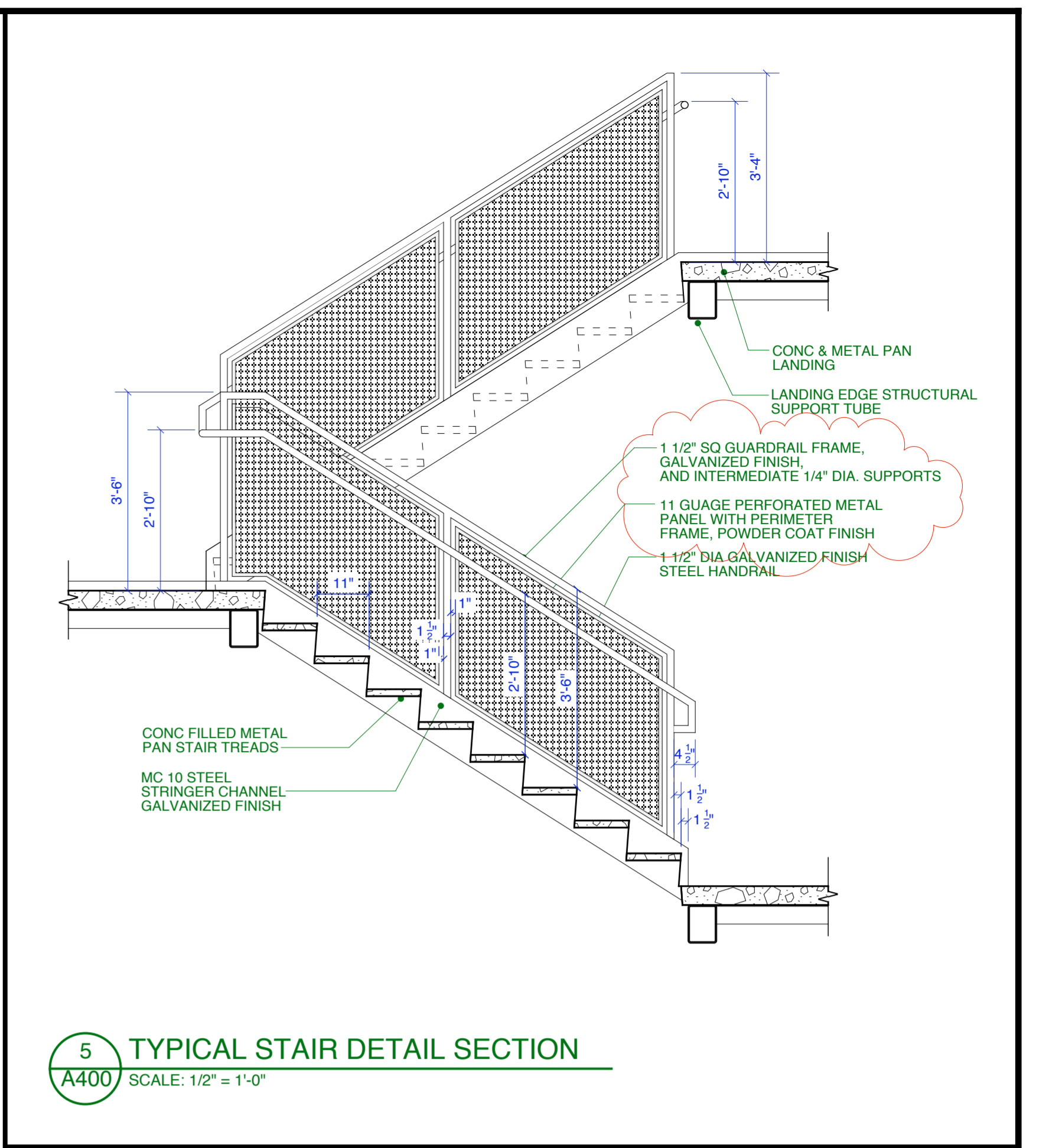
2 WEST STAIR FIRST FLOOR PLAN
A101 SCALE: 1/4" = 1'-0"



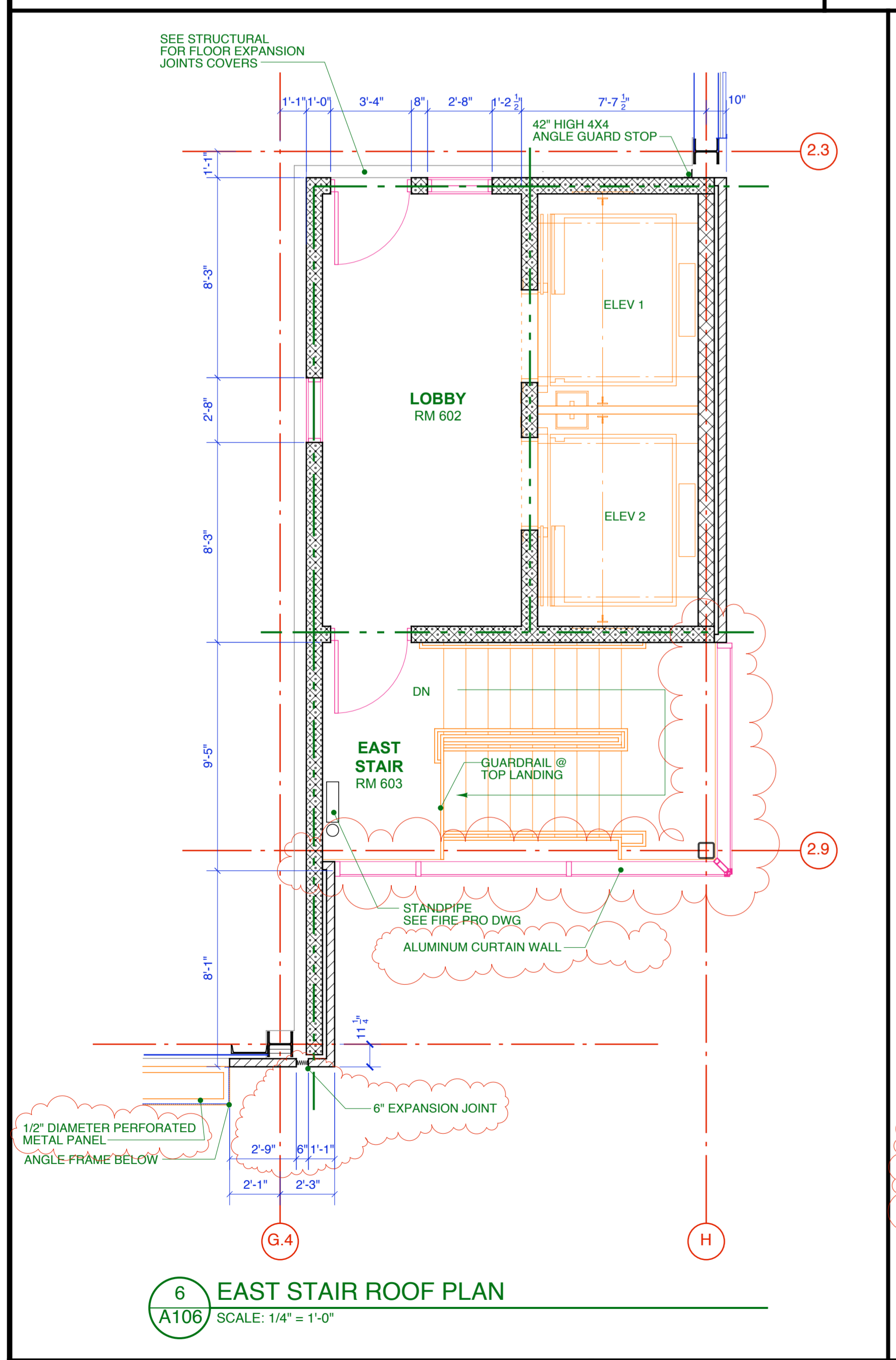
3 WEST STAIR TYPICAL FLOOR PLAN
A102 SCALE: 1/4" = 1'-0"



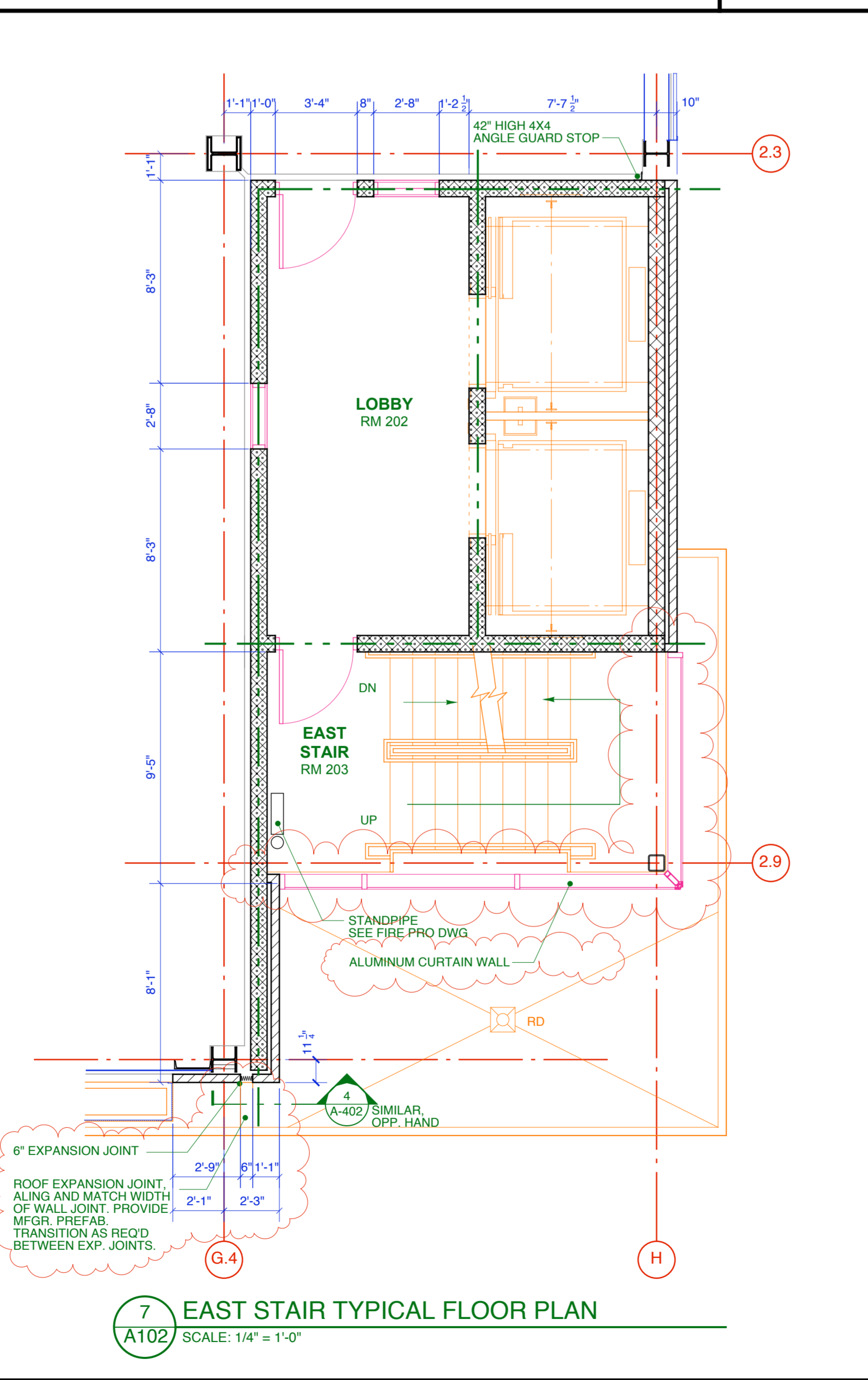
4 WEST STAIR ROOF PLAN
A106 SCALE: 1/4" = 1'-0"



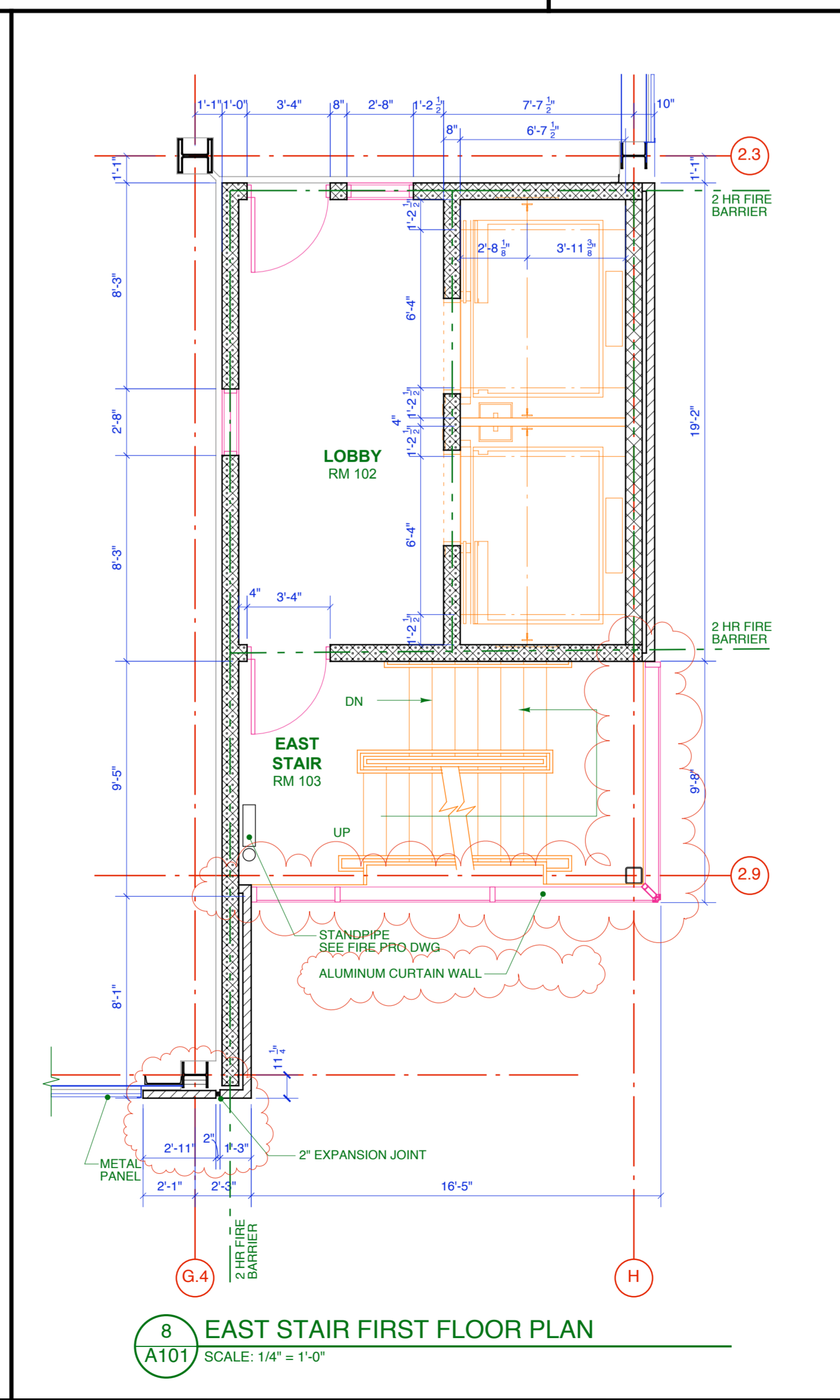
5 TYPICAL STAIR DETAIL SECTION
A400 SCALE: 1/2" = 1'-0"



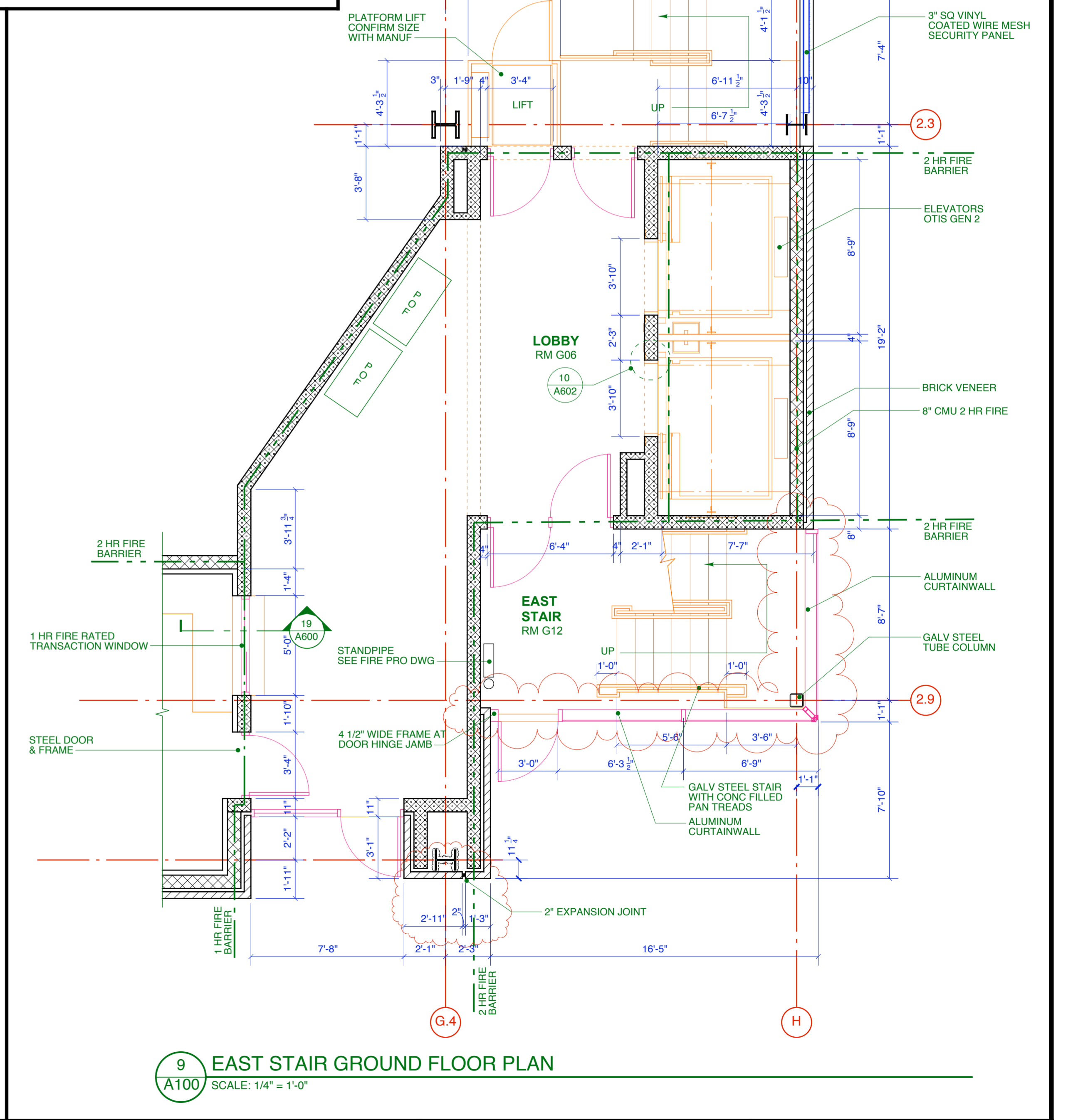
6 EAST STAIR ROOF PLAN
A106 SCALE: 1/4" = 1'-0"



7 EAST STAIR TYPICAL FLOOR PLAN
A102 SCALE: 1/4" = 1'-0"



8 EAST STAIR FIRST FLOOR PLAN
A101 SCALE: 1/4" = 1'-0"



9 EAST STAIR GROUND FLOOR PLAN
A100 SCALE: 1/4" = 1'-0"

STRUCTURAL PARKING ENGINEER:
SIMON DESIGN ENGINEERING LLC
42 Washington Street, Suite 300 781.237.2226 tel
Wellesley, Massachusetts 02481 781.237.2272 fax
www.sde-us.com info@sde-us.com

CIVIL ENGINEER:
WOODARD & CURRAN
Engineering • Science • Operations

ARCHITECT:
SSA
Scott Simons Architects
SCOTT R. SIMONS
NO. 2034
STATE OF MAINE
LICENSED ARCHITECT

PROJECT:
**OCEAN GATEWAY
PARKING GARAGE**
MIDDLE STREET
PORTLAND, MAINE

TITLE:
**STAIR
PLAN DETAILS**

REVISION / DATE:
ADDENDUM #1: MARCH 20, 2007
PLANNING REVIEW: MAY 22, 2007
BULLETIN #1: AUGUST 10, 2007
STATUS:
CONSTRUCTION DRAWINGS

DATE:
08.06.2007
PROJECT NO.
2005-0161
SCALE:
3/4" = 1'-0"
DWG NO.
A400
THIS DRAWING IS THE PROPERTY OF
SCOTT SIMONS ARCHITECTS
AND IS NOT TO BE COPIED OR
REPRODUCED IN PART OR WHOLE.
©2007 Scott Simons Architects