

(1) GENERAL NOTES:

- A. FIRE ALARM SYSTEM WIRING SHALL COMPLY WITH THE NATIONAL ELECTRICAL CODE, APPLICABLE STATE AND LOCAL CODES, AND SHALL BE COORDINATED WITH THE LOCAL AUTHORITY HAVING JURISDICTION.
- B. CAUTION: DO NOT CONNECT ANY POWER TO THE CONTROL PANEL (BATTERIES OR 120V AC) UNTIL ALL OTHER FIELD WIRING IS TESTED AND CONNECTED.
- C. DO NOT INSTALL FIRE ALARM CONTROL PANEL, NAC POWER SUPPLY PANEL, SMOKE DETECTORS OR ANY ADDRESSABLE DEVICES IN UNHEATED SPACES.
- D. DO NOT INSTALL ANY AC CURRENT-CARRYING CONDUCTORS CLOSE TO OR IN THE SAME RACEWAY WITH FIRE ALARM SYSTEM CONDUCTORS.
- E. SOLID LINES REPRESENT CONNECTIONS TO BE MADE BY THE SYSTEM INSTALLER.
- F. ALL RELAYS ARE SHOWN IN NORMAL SUPERVISORY CONDITION. ALL RELAYS ARE FORM "C" TYPE.

(2) INSTALLATION NOTES

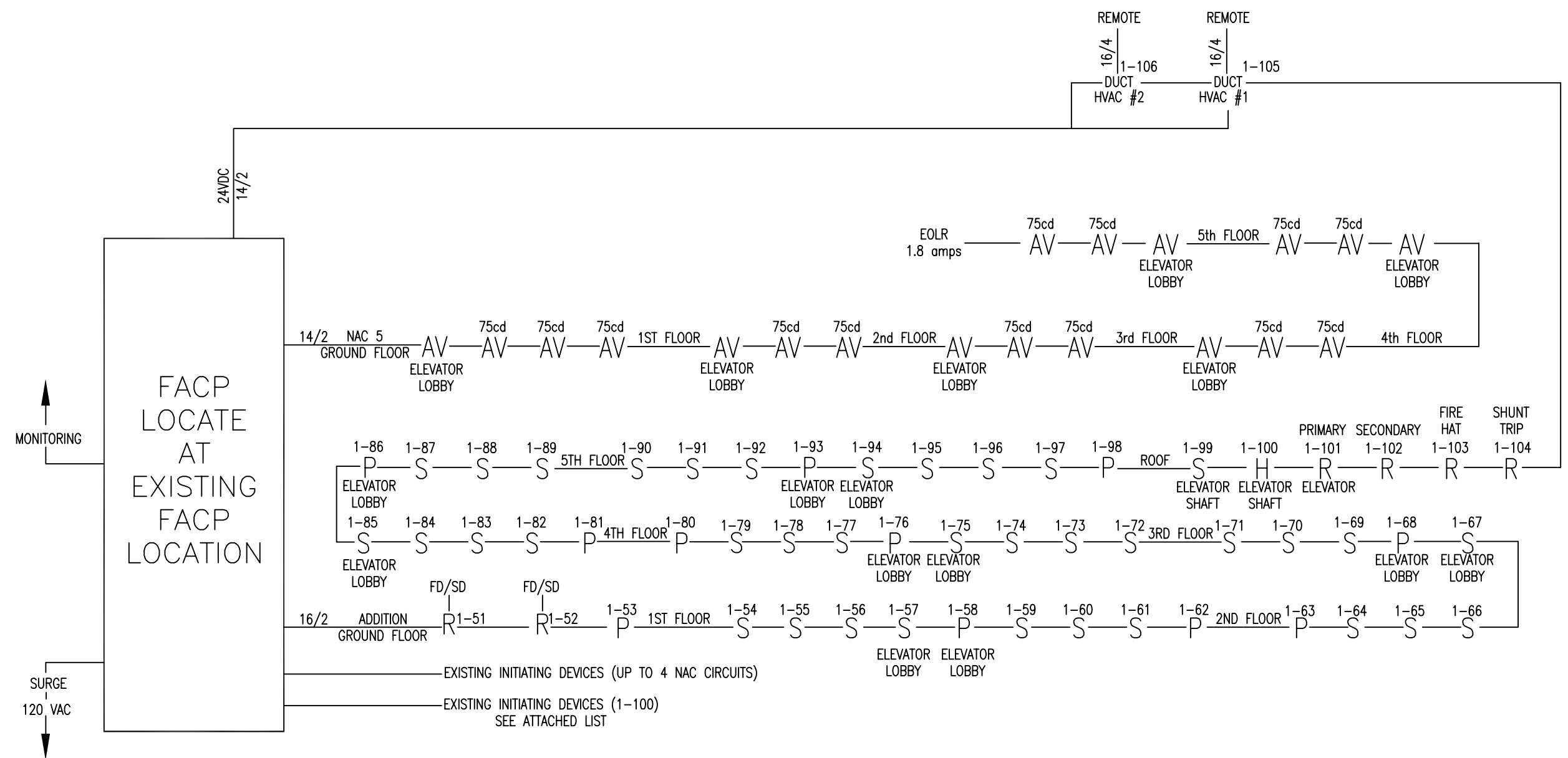
- A. SMOKE DETECTORS SHALL NOT BE MOUNTED ANY CLOSER THAN 3' FROM ANY AIR DUCT OPENINGS
- B. ELEVATOR LOBBY SMOKE DETECTORS SHALL BE MOUNTED WITHIN 10' OF THE ELEVATOR DOOR
- C. MANUAL PULL STATIONS SHALL BE MOUNTED PER ADA REQUIREMENTS: 48" AFF OR 42" AFF TO COMPLY WITH SIDE/FRONT REACH REQUIREMENTS
- D. WALL MOUNTED HORN/STROBES & STROBES SHALL BE MOUNTED 6" FROM CEILING, OR 96" TO 80" AFF TO THE CENTER OF STROBE
- E. HORN/STROBES & STROBES SHALL BE MOUNTED 15' FROM THE CORNER OF THE WALL. IF THIS IS NOT POSSIBLE, DEVICE SHALL BE CENTERED ON THAT WALL.
- F. CEILING MOUNTED HALLWAY DEVICES SHALL BE LOCATED IN A SYMMETRICAL MANNER DOWN CENTER OF HALLWAY WHEN POSSIBLE.
- G. MONITORING REQUIRES TWO FAIRPOINT PHONE LINES UNLESS OTHER ARRANGEMENTS HAVE BEEN MADE.

(3) SEE INITIATION CIRCUITS AND NAC CIRCUITS FOR INTEGRATION OF BOTH SLC AND NAC CIRCUITS

- (4) ALL CABLING IS 14/2 FOR THE NAC CIRCUITS UNLESS OTHERWISE SHOWN
- (5) ALL CABLING IS 16/2 FOR THE SLC CIRCUITS UNLESS OTHERWISE SHOWN

- (6) AC = ALARM CONTROL MODULE
- R = ARM = ADDRESSABLE RELAY MODULE
- AV = AUDIO VISUAL DEVICE (SET TO 15cd UNLESS NOTED OTHERWISE)
- B = EXTERIOR BEACON
- CO = CO DETECTOR
- D = DUAL MODULE
- DUCT=DUCT DETECTOR
- F = FLOW
- FACP = MAIN FIRE PANEL
- H = HEAT DETECTOR
- I = ISOLATION MODULES
- T.S. = TWISTED SHIELDED
- S/CO = SMOKE/CO DETECTOR
- RL = REMOTE LIGHT
- K = KNOX BOX
- LA = LOW AIR
- MM = MINI MODULE
- P = PULL STATION
- PS = PRESSURE SWITCH
- RI = REMOTE INDICATOR
- S = SMOKE
- SA = SMOKE WITH AUDIBLE BASE
- T = TAMPER
- TS = TEST SWITCH
- V = VISUAL DEVICE ONLY (SET TO 15cd UNLESS NOTED OTHERWISE)
- MH = MINI HORN
- RTS = REMOTE TEST MODULE
- PS = PULL STATION
- CL = CORRIDOR LIGHT
- CO = CO DETECTOR (MAY REQUIRE 24 VDC POWER)
- SCM = INPUT MODULE

(F) = FIRE EXTINGUISHER MONITORING



CONSULTANT: Rich Probst, JR.

Phone: (207) 536-4800  
Cell: (207) 869-6800

21 RICE STREET, UNIT #2  
PORTLAND, MAINE 04103

**OCEAN GATEWAY GARAGE**  
167 Fore St. Portland, Maine

PROJECT:

**RISER**

DRAWING:

REVISIONS

DATE: 12/13/17

SCALE: NTS

DRAWN BY: SSA

APPROVED BY: -

SHEET: 1