



## Design No. U453 BXUV.U453 Fire Resistance Ratings - ANSI/UL 263

[Page Bottom](#)

### Design/System/Construction/Assembly Usage Disclaimer

- Authorities Having Jurisdiction should be consulted in all cases as to the particular requirements covering the installation and use of UL Certified products, equipment, system, devices, and materials.
- Authorities Having Jurisdiction should be consulted before construction.
- Fire resistance assemblies and products are developed by the design submitter and have been investigated by UL for compliance with applicable requirements. The published information cannot always address every construction nuance encountered in the field.
- When field issues arise, it is recommended the first contact for assistance be the technical service staff provided by the product manufacturer noted for the design. Users of fire resistance assemblies are advised to consult the general Guide Information for each product category and each group of assemblies. The Guide Information includes specifics concerning alternate materials and alternate methods of construction.
- Only products which bear UL's Mark are considered Certified.

### BXUV - Fire Resistance Ratings - ANSI/UL 263

### BXUV7 - Fire Resistance Ratings - CAN/ULC-S101 Certified for Canada

[See General Information for Fire-resistance Ratings - ANSI/UL 263](#)

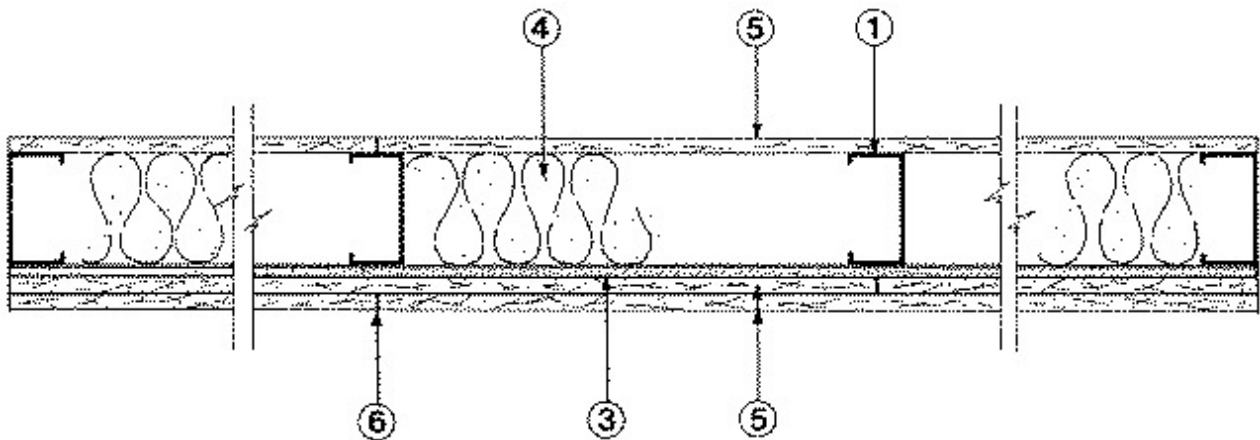
[See General Information for Fire Resistance Ratings - CAN/ULC-S101 Certified for Canada](#)

## Design No. U453

May 15, 2017

**Nonbearing Wall Rating — 2 HR.**

**\* Indicates such products shall bear the UL or cUL Certification Mark for jurisdictions employing the UL or cUL Certification (such as Canada), respectively.**



**1. Studs** — Channel-shaped, 3-1/2 in. wide by 1-1/4 in. deep with 5/16 in. folded back return flange legs. Fabricated from No. 20 MSG galv steel. Max stud spacing 24 in. OC. Studs to be cut 1 in. less than assembly height.

**1A. Framing Members\* — Steel Studs** — Not Shown — As an alternate to Item 1 and for use with Item 2A - proprietary channel shaped, 3-1/25/8 in. wide by 1-1/4 in. deep. Fabricated from No. 20 MSG galv steel. Max stud spacing 24 in. OC. Studs to be cut 1 in. less than assembly height.

**KIRII (HONG KONG) LTD** — Type KIRII

**2. Floor and Ceiling Runners** — (Not Shown) — Channel-shaped runners, 3-5/8 in. wide by 1-1/4 in. deep, fabricated from No. 20 MSG galv steel. Attached to floor and ceiling with fasteners, 24 in. OC, max.

**2A. Floor and Ceiling Runners** — (Not Shown) — In lieu of Item 2 - For use with Item 1A - proprietary channel shaped runners, 3-5/8 in. wide by 1-1/4 in. deep, fabricated from No. 20 MSG galv steel. Attached to floor and ceiling with

fasteners, 24 in. OC, max.

**KIRII (HONG KONG) LTD** — Type KIRII

**3. Resilient Channel** — 25 MSG galv steel resilient channels spaced vertically max 24 in. OC, flange portion attached to each intersecting stud with 1/2 in. long type S-12 pan head steel screws.

**3A. Steel Framing Members\*** — (Not Shown) — As an alternate to Item 3, furring channels and Steel Framing Members as described below:

a. **Furring Channels** — Formed of No. 25 MSG galv steel. 2-9/16 in. or 2-23/32 in. wide by 7/8 in. deep, spaced 24 in. OC perpendicular to studs. Channels secured to studs as described in Item b. Ends of adjoining channels are overlapped 6 in. and tied together with double strand of No. 18 SWG galv steel wire near each end of overlap. As an alternate, ends of adjoining channels may be overlapped 6 in. and secured together with two self-tapping #6 framing screws, min. 7/16 in. long at the midpoint of the overlap, with one screw on each flange of the channel.

b. **Steel Framing Members\*** — Used to attach furring channels (Item a) to studs (Item 1). Clips spaced 48 in. OC., and secured to studs with 1-5/8 in. wafer or hex head Type S steel screw through the center grommet. Furring channels are friction fitted into clips. RSIC-1 clip for use with 2-9/16 in. wide furring channels. RSIC-1 (2.75) clip for use with 2-23/32 in. wide furring channels.

**PAC INTERNATIONAL L L C** — Types RSIC-1, RSIC-1 (2.75).

**3B. Steel Framing Members\*** — (Optional, Not Shown) — Furring channels and Steel Framing Members as described below:

a. **Furring Channels** — Formed of No. 25 MSG galv steel. Spaced 24 in. OC perpendicular to studs. Channels secured to studs as described in Item b. Ends of adjoining channels overlapped 6 in. and secured together with four self-tapping No. 8x1/2 Self Drilling screws (2 per side 1 in. and 4 in. from overlap edge). Gypsum board attached to furring channels as described in Item 5. Side joint furring channels shall be attached to studs with RESILMOUNT Sound Isolation Clips - Type A237R located approximately 2 in. from each end of length of channel. Both Gypsum Boards at side joints fastened into channel with screws spaced 8 in. OC, approximately 1/2 in. from joint edge.

b. **Steel Framing Members\*** — Used to attach furring channels (Item 3Ba) to studs. Clips spaced 24 in. OC., and secured to studs with No. 10 x 2-1/2 in. coarse drywall screw through the center hole. Furring channels are friction fitted into clips.

**STUDCO BUILDING SYSTEMS** — RESILMOUNT Sound Isolation Clips - Type A237R

**4. Batts and Blankets** — Placed to fill interior of stud cavity, 3 in. min thickness.

**ROXUL INC** — Type AFB

**THERMAFIBER INC** — Type SAFB.

**5. Gypsum Board** — 1/2 in. thick, 4 ft wide. Attached to resilient or furring channels, base layer with 1 in. Type S steel screws spaced 24 in. OC., face layer with 1-5/8 in. Type S screws spaced 12 in. OC. Wallboard on direct attached side attached with 1 in. Type S-12 steel screws spaced 12 in. OC. Wallboard joints oriented vertically, located over studs and offset between layers.

**ACADIA DRYWALL SUPPLIES LTD** — Type C

**AMERICAN GYPSUM CO** — Types AG-C.

**CERTAINTED GYPSUM INC** — Type C.

**CGC INC** — Types C, IP-X2, IPC-AR, WRC.

**CONTINENTAL BUILDING PRODUCTS OPERATING CO, L L C** — Type LGFC-C/A.

**GEORGIA-PACIFIC GYPSUM L L C** — Types 5, DAPC, TG-C.

**NATIONAL GYPSUM CO** — Types eXP-C, FSK-C, FSW-C, FSMR-C.

**PABCO BUILDING PRODUCTS L L C, DBA PABCO GYPSUM** — Type PG-C.

**PANEL REY S A** — Type PRC

**SAINT-GOBAIN GYPROC MIDDLE EAST FZE** — Type Gyproc FireStop, Gyproc FireStop MR, Gyproc FireStop M2TECH, Gyproc FireStop ACTIV'Air, Gyproc FireStop MR ACTIV'Air, Gyproc FireStop M2TECH ACTIV'Air

**THAI GYPSUM PRODUCTS PCL** — Type C.

**UNITED STATES GYPSUM CO** — Types C, IP-X2, IPC-AR, WRC.

**USG BORAL ZAWAWI DRYWALL L L C SFZ** — Type C

**USG MEXICO S A DE C V** — Types C, IP-X2, IPC-AR, WRC.

**6. Joint Tape and Compound** — Vinyl, dry or premixed joint compound, applied to joints and screw heads; paper tape, 2 in. wide, embedded in first layer of compound over all joints. As an alternate, nom 3/32 in. thick gypsum veneer plaster may be applied to the entire surface of Classified veneer baseboard. Joints reinforced.

**7. Caulking and Sealants\*** — (Optional, Not Shown) — A bead of acoustical sealant applied around the partition perimeter for sound control.

**UNITED STATES GYPSUM CO** — Type AS.

**8. Wall and Partition Facings and Accessories\*** — (Optional, Not Shown) — Nominal 1/2 in. thick, 4 ft wide panels, for optional use as an additional layer on one or both sides of the assembly. Panels attached in accordance with manufacturer's recommendations. When the QR-500 or QR-510 panel is installed between the steel framing and the UL Classified gypsum board, the required UL Classified gypsum board layer(s) is/are to be installed as indicated as to fastener type and spacing, except that the required fastener length shall be increased by a minimum of 1/2 in. Not evaluated or intended as a substitute for the required layer(s) of UL Classified Gypsum Board.

**PABCO BUILDING PRODUCTS L L C, DBA PABCO GYPSUM** — Type QuietRock QR-500 and QR-510

**\* Indicates such products shall bear the UL or cUL Certification Mark for jurisdictions employing the UL or cUL Certification (such as Canada), respectively.**

Last Updated on 2017-05-15

[Questions?](#)

[Print this page](#)

[Terms of Use](#)

[Page Top](#)

© 2017 UL LLC

The appearance of a company's name or product in this database does not in itself assure that products so identified have been manufactured under UL's Follow-Up Service. Only those products bearing the UL Mark should be considered to be Certified and covered under UL's Follow-Up Service. Always look for the Mark on the product.

UL permits the reproduction of the material contained in the Online Certification Directory subject to the following conditions: 1. The Guide Information, Assemblies, Constructions, Designs, Systems, and/or Certifications (files) must be presented in their entirety and in a non-misleading manner, without any manipulation of the data (or drawings). 2. The statement "Reprinted from the Online Certifications Directory with permission from UL" must appear adjacent to the extracted material. In addition, the reprinted material must include a copyright notice in the following format: "© 2017 UL LLC".