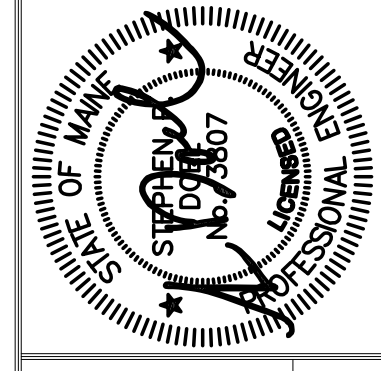
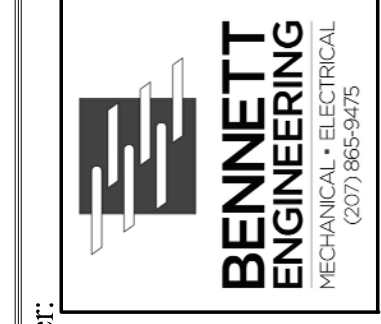


General Mechanical Notes:
 1. ERV/IA shall be a Resaire Model HEIXNV, 350 cfm, with non-fused disconnect switch, motorized dampers and 24V. transformer / relay panel, two (2) 3/4 HP, 208/1 motors, direct drive. See the Drawings for quantities.



Prepared For:



Consulting Engineer:

Architect:
 48 Union Wharf Portland, Maine 04101
 (207) 772-6022 Fax (207) 772-4056

Project:
Addition to Ocean Gateway Garage
 167 Fore St, Portland, Maine

Revisions:

Date: April 12, 2017
 Scale: 1/8" = 1'-0"
GROUND FLOOR MECHANICAL PLAN

M1.01