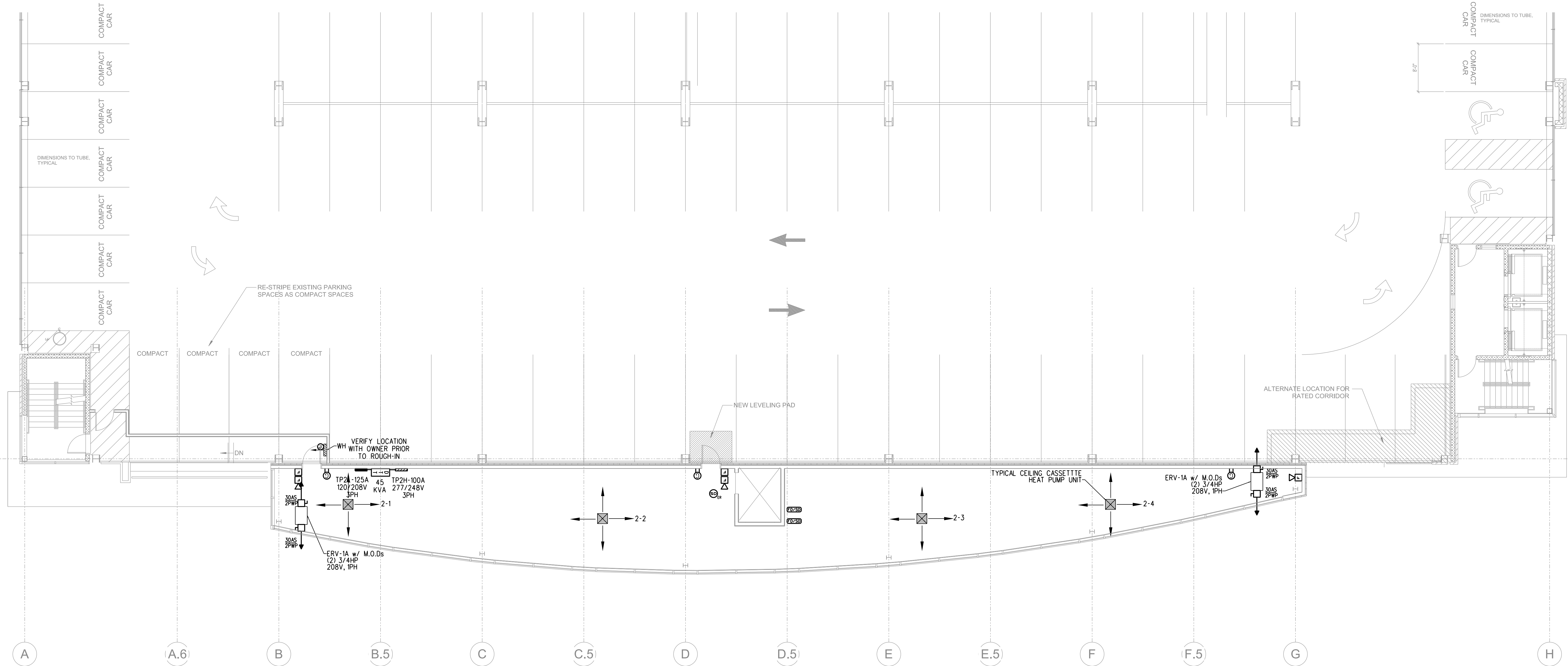


**BENNETT
ENGINEERING**
MECHANICAL • ELECTRICAL
(207) 865-9475

Prepared For:

Consulting Engineer:
BENNETT ENGINEERING
48 Union Wharf Portland, Maine 04101
(207) 772-6022 Fax (207) 772-4056

Architect:
**Addition to Ocean
Gateway Garage**
167 Fore St,
Portland, Maine



Revisions:

Date: April 12, 2017

Scale: 1/8" = 1'-0"

**FIRST FLOOR
POWER PLAN**

E2.01