

EXISTING 400A 480/277V, 3P
 RETAIL DISTRIBUTION PANEL
 BOARD-SPACE AVAILABLE FOR (6)
 3-POLE BREAKERS.
 MAIN ELECTRICAL ROOM IS APPROX
 200 FT FROM NEW SPACE.

(4)-EXISTING 4" RUN UNDER FINISHED
 FLOOR SLAB FOR FUTURE SPACE. CONDUITS
 TO BE USED FOR POWER, TELEPHONE AND
 CABLE TV SERVICES. COORDINATE IN FIELD

(4)-EXISTING 4" RUN UNDER FINISHED
 FLOOR SLAB FOR FUTURE SPACE. CONDUITS
 TO BE USED FOR POWER, TELEPHONE AND
 CABLE TV SERVICES. COORDINATE IN FIELD

(4)-EXISTING 4" RUN UNDER FINISHED
 FLOOR SLAB FOR FUTURE SPACE. CONDUITS
 TO BE USED FOR POWER, TELEPHONE AND
 CABLE TV SERVICES. COORDINATE IN FIELD

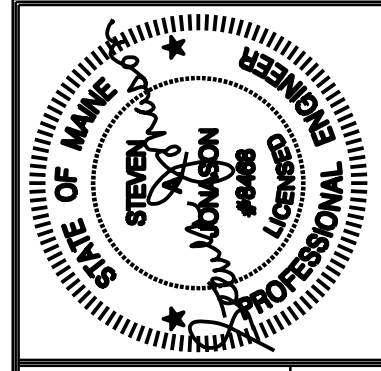
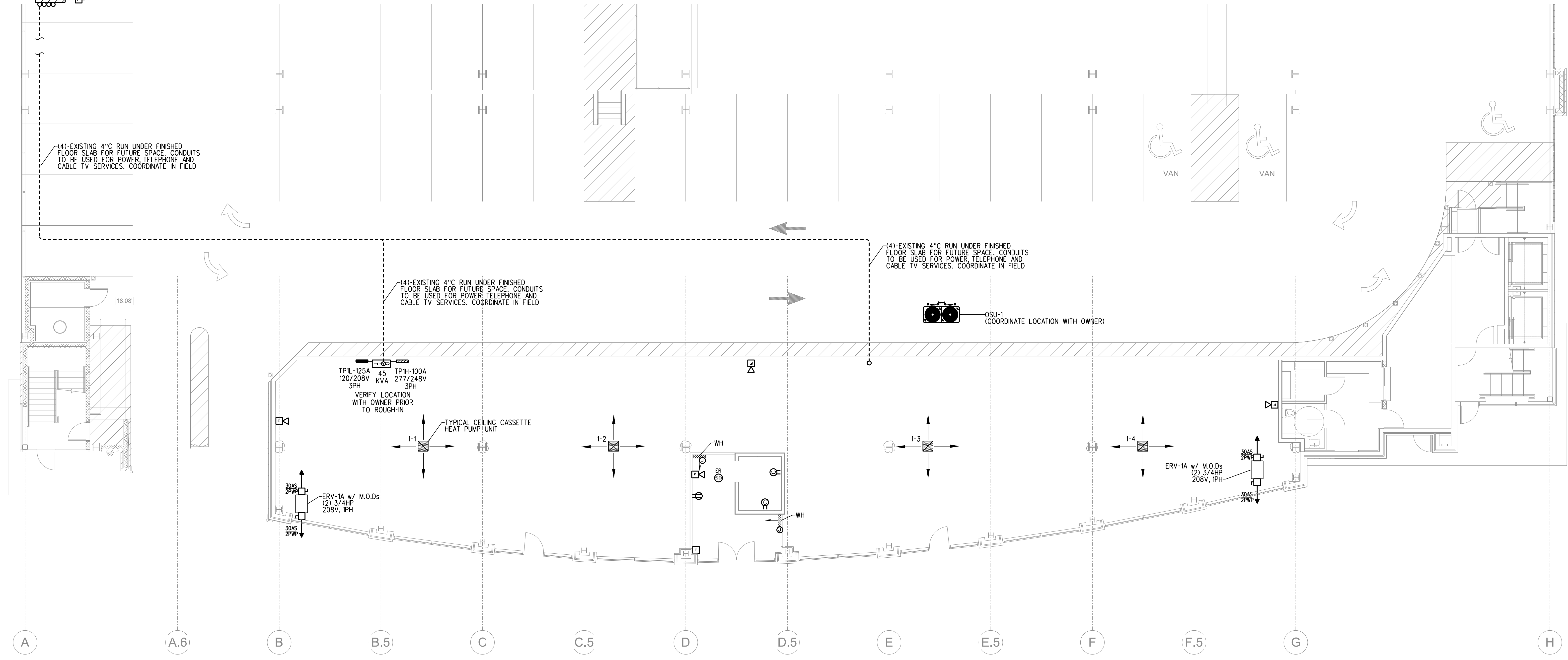
OSU-1
 (COORDINATE LOCATION WITH OWNER)

TP1L-125A 45
 120/208V KVA 277/248V
 3PH 3PH
 VERIFY LOCATION
 WITH OWNER PRIOR
 TO ROUGH-IN

TYPICAL CEILING CASSETTE
 HEAT PUMP UNIT

ERV-1A w/ M.O.D.s
 (2) 3/4HP
 208V, 1PH

ERV-1A w/ M.O.D.s
 (2) 3/4HP
 208V, 1PH



Prepared For:

BENNETT ENGINEERING
 MECHANICAL & ELECTRICAL
 (207) 865-9475

Consulting Engineer:
 Architect:
 48 Union Wharf Portland, Maine 04101
 (207) 772-6022 Fax (207) 772-4056

Project:
Addition to Ocean Gateway Garage
 167 Fore St, Portland, Maine

Revisions:

Date: April 12, 2017
 Scale: 1/8" = 1'-0"
GROUND FLOOR POWER PLAN

E2.00